

Converting Colors

Decimal(14649234)

Have a look what the booklet for
Decimal(14649234) contains.

| | |
|--|----|
| Decimal(14649234) | 3 |
| <i>Conversions</i> | 4 |
| <i>Details</i> | 6 |
| <i>Harmonies</i> | 11 |
| <i>Previews</i> | 23 |
| <i>Color Blindness Simulation</i> | 26 |
| <i>CSS Examples</i> | 29 |

Color

Decimal(14649234)

Conversions

Conversions Part 1

| Format | Color |
|---------------|----------------------------|
| Hex | DF8792 |
| RGB | 223, 135, 146 |
| RGB Percent | 87%, 53%, 57% |
| CMY | 0.1255, 0.4706, 0.4275 |
| CMYK | 0.00, 0.39, 0.35, 0.13 |
| HSL | 352°, 58%, 70% |
| HSV | 352°, 39%, 87% |
| XYZ | 44.2837, 35.0912, 31.6334 |
| YIQ | 162.5660, 48.9170, 22.0770 |

Conversions

Conversions Part 2

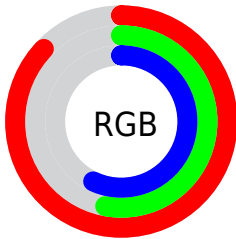
| Format | Color |
|-------------------------------------|-------------------------------|
| R _Y B | 223, 135, 146 |
| Decimal | 14649234 |
| CIE Lab | 65.82, 34.95, 8.61 |
| CIE LCh | 66, 35.992, 13.834 |
| Yxy | 35.0912, 0.3989, 0.3161 |
| Android (android.graphics.Color) | 4292839314 (0xFFDF8792) |
| YUV | 162.5660, -8.1670, 53.0006 |
| Hunter-Lab | 59.2379, 29.7727, 9.8053 |

Details

The Decimal color **14649234** is a light color, and the websafe version is hex **FF9999**. A complement of this color would be **8904660**, and the grayscale version is **10724259**.

A 20% lighter version of the original color is **16760264**, and **10834784** is the 20% darker color. If you saturate the color by 10%, you get **14643582**, and if you desaturate by 10%, it is **14654886**.

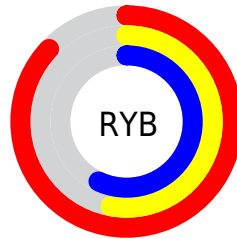
Distribution



Red (87%)

Green (53%)

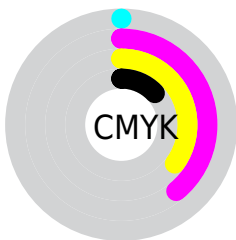
Blue (57%)



Red (87%)

Yellow (53%)

Blue (57%)

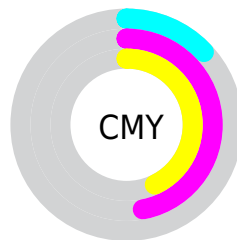


Cyan (0%)

Magenta (39%)

Yellow (35%)

Black (13%)



Cyan (13%)

Magenta (47%)

Yellow (43%)

Brightness & Saturation Gradients

These gradients show how the Decimal color 14649234 changes by changing the brightness by 10 percent. The first figure shows a shift by +10% for each color and the second figure -10%.

Similar to the brightness gradients but the following saturation gradients show a change of the Decimal color 14649234 by changing the saturation by 10% instead.

 14649234

 14649234

16777215

 12742008


 16760264

 10834784

 16767716

 8993608

 16774911

 7217714

 5441053

 3801090

 2031617

 0

 14649234

 14649234

 14643582

 14654886

 14637675

 14660793

 14632023

 14666445

 14626372

 14672096

 14620720

 14678004

 14614813

 14680063

 14614556

Harmonies

Analogous

The Analogous color harmony consists of three colors that are next to each other on the color wheel.



13928883



14649234



14257525

Triad

The Triadic color harmony groups three colors that are evenly spaced from another and form a triangle on the color wheel.



14649234



8563568



5417181

Complementary

The Complementary color scheme is a pair of colors which are on the opposite of each other on the color wheel.



14649234



8904660

Split Complementary

Split-complementary colors differ from the complementary color scheme. The scheme consists of three colors, the original color and two neighbors of the complement color.



1683404



14649234



5877901

Square

The Square scheme is like the rectangle color scheme, but the four colors are evenly spaced on the color wheel.



14649234



10920800



2797998



9084638

Rectangle

The Rectangle color scheme consists of four colors that form a rectangle on the color wheel.



14649234



13407335



2797998



4107225

Sweetspot

The Sweet Spot groups the original color and five complimentary colors.



14649234



16769252



13862879



8416880



0



8421504

Same Dimension

The Same Dimension uses a secret algorithm to generate beautiful new colors.



14649234



16746390



14657415



7365990



11534358



3145734

Inverse Universe

The Inverse Universe completely reimagines the original color for something new.



14649234



16746390



8896479



7365990



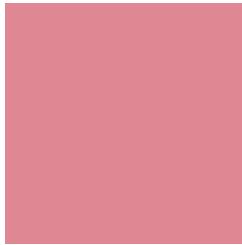
11534358



3145734

Previews

White Background



This preview shows how the Decimal color 14649234 looks on a white background.

Color Contrast Check

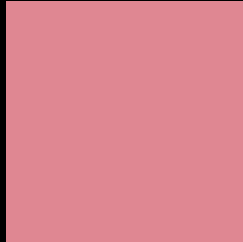
Large Text (above 18pt) WCAG AA × Fail

Any Text WCAG AA × Fail

Large Text (above 18pt) WCAG AAA × Fail

Any Text WCAG AAA × Fail

Black Background



This preview shows how the Decimal color 14649234 looks on a black background.

Color Contrast Check

Large Text (above 18pt) WCAG AA ✓ Pass

Any Text WCAG AA ✓ Pass

Large Text (above 18pt) WCAG AAA ✓ Pass

Any Text WCAG AAA ✓ Pass

If you want to check with other color combinations, try the [Color Contrast Checker](#).

Decimal 14649234 Background



This preview shows how black text looks on a background with the Decimal color 14649234.



This preview shows how white text looks on a background with the Decimal color 14649234.

Color Blindness Simulation

Color vision deficiency is a very complex topic, and I could not describe the different causes any better than Wikipedia does, so if you want to learn more, you should check out their [article about color blindness](#).


Dichromacy



Original Color
14649234

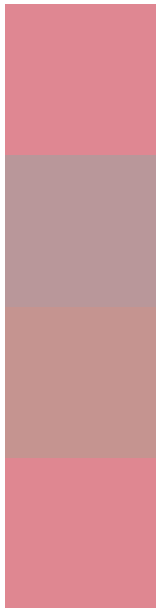
Protanopia
10723487

Deuteranopia
11967375



Tritanopia
14649233

Trichromacy



Original Color

14649234

Protanomaly

12162970

Deuteranomaly

12948624

Tritanomaly

14649233

Monochromacy



Original Color

14649234

Achromatopsia

10724259

Achromatomaly

12163485

CSS Examples

Text

The CSS property to change the color of the text to Decimal 14649234 is called "color". The color property can be set on classes, ids or directly on the HTML element.

This example shows how text in the color #DF8792 looks like.

```
.text, #text, p{  
    color:#DF8792  
}
```

If you want to add a text shadow in that color use the text-shadow property, you can generate a text shadow directly with our [CSS Text Shadow Generator](#).

Here you see how black text with a 4 pixel #DF8792 colored shadow looks like.

```
.shadow{ text-shadow: 4px 4px 2px #DF8792
}
```

Border

The CSS property to change the border of an element to Decimal 14649234 is called "border". The border property can be set on classes, ids or directly on the HTML element.

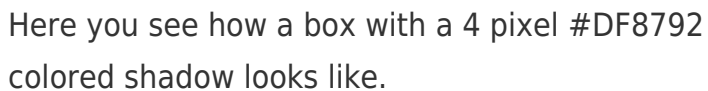
This example shows the color as border, it can be applied via the CSS property "border" or "border-color".

```
.border, #border, table{ border:4px solid
#DF8792 }
```

If only the border color should be changed use the property `border-color`.

```
.border{ border-color:#DF8792 }
```

If you want to add a box shadow in that color use:



Here you see how a box with a 4 pixel #DF8792 colored shadow looks like.

```
.boxshadow{ -moz-box-shadow:4px 4px 4px  
4px #DF8792; -webkit-box-shadow:4px 4px  
4px 4px #DF8792; box-shadow:4px 4px 4px  
4px #DF8792 }
```

Background

The CSS property to change the background color of an element to Decimal 14649234 is called "background". The background property can be set on classes, ids or directly on the HTML element.

```
.background, #background, body{  
background:#DF8792 }
```

If only the background color should be changed can be used:

```
.background{ background-color:#DF8792 }
```

This example shows the color as background, it is applied via the CSS property "background".

To optimize and compress your CSS code, you can use our [online CSS compressor and optimizer](#) based on csstidy. If you want to create a linear or radial gradient as background or border, check our [CSS Gradient Generator](#).

Hey! You found this booklet interesting? Support Converting Colors with the new Membership Option!

The pro membership hides all ads, plus gives you double the colors in the color bucket, and more awesome pro features!

[Learn more, Memberships starting at \\$2.50/m!](#)

**Follow me
on Twitter!**

@ConvertingColor