

Converting Colors

Decimal(14651292)

Have a look what the booklet for
Decimal(14651292) contains.

Decimal(14651292)	3
<i>Conversions</i>	4
<i>Details</i>	6
<i>Harmonies</i>	11
<i>Previews</i>	23
<i>Color Blindness Simulation</i>	26
<i>CSS Examples</i>	29

Color

Decimal(14651292)

Conversions

Conversions Part 1

Format	Color
Hex	DF8F9C
RGB	223, 143, 156
RGB Percent	87%, 56%, 61%
CMY	0.1255, 0.4392, 0.3882
CMYK	0.00, 0.36, 0.30, 0.13
HSL	350°, 56%, 72%
HSV	350°, 36%, 87%
XYZ	46.2546, 37.7332, 36.2978
YIQ	168.4020, 43.5070, 21.0030

Conversions

Conversions Part 2

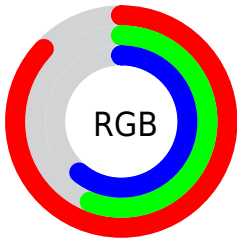
Format	Color
R_{YB}	223, 143, 156
Decimal	14651292
CIE _{Lab}	67.82, 31.98, 5.85
CIE _{LCh}	68, 32.508, 10.361
Yxy	37.7332, 0.3845, 0.3137
Android (android.graphics.Color)	4292841372 (0xFFDF8F9C)
YUV	168.4020, -6.1142, 47.8824
Hunter-Lab	61.4274, 26.9122, 7.9643

Details

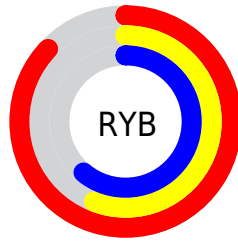
The Decimal color **14651292** is a light color, and the websafe version is hex **CC9999**. A complement of this color would be **9428946**, and the grayscale version is **11053224**.

A 20% lighter version of the original color is **16762578**, and **10902377** is the 20% darker color. If you saturate the color by 10%, you get **14645641**, and if you desaturate by 10%, it is **14656943**.

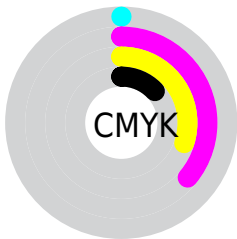
Distribution



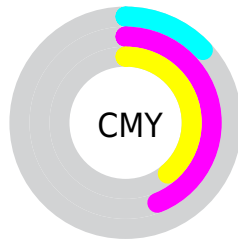
- Red (87%)
- Green (56%)
- Blue (61%)



- Red (87%)
- Yellow (56%)
- Blue (61%)



- Cyan (0%)
- Magenta (36%)
- Yellow (30%)
- Black (13%)



- Cyan (13%)
- Magenta (44%)
- Yellow (39%)

Brightness & Saturation Gradients

These gradients show how the Decimal color 14651292 changes by changing the brightness by 10 percent. The first figure shows a shift by +10% for each color and the second figure -10%.

Similar to the brightness gradients but the following saturation gradients show a change of the Decimal color 14651292 by changing the saturation by 10% instead.

 14651292

 14651292

16777215

 12744066

 16762578

 10902377

 16769775

 9061201

 7285562

 5575205

 3866639

 2359297

 0

 14651292

 14651292

 14645641

 14656943

 14639735

 14662849

 14634084

 14668500

 14628433

 14674151

 14622527

 14680057

 14616876

 14680063

 14614564

Harmonies

Analogous

The Analogous color harmony consists of three colors that are next to each other on the color wheel.



13865658



14651292



14390401

Triad

The Triadic color harmony groups three colors that are evenly spaced from another and form a triangle on the color wheel.



14651292



9416568



6270684

Complementary

The Complementary color scheme is a pair of colors which are on the opposite of each other on the color wheel.



14651292



9428946

Split Complementary

Split-complementary colors differ from the complementary color scheme. The scheme consists of three colors, the original color and two neighbors of the complement color.



4240330



14651292



7124113

Square

The Square scheme is like the rectangle color scheme, but the four colors are evenly spaced on the color wheel.



14651292



11511659



4896175



9283039

Rectangle

The Rectangle color scheme consists of four colors that form a rectangle on the color wheel.



14651292



13736307



4896175



5419223

Sweetspot

The Sweet Spot groups the original color and five complimentary colors.



14651292



16770024



13799391



8417138



0



8421504

Same Dimension

The Same Dimension uses a secret algorithm to generate beautiful new colors.



14651292



16748963



14658191



7365991



11534365



3145736

Inverse Universe

The Inverse Universe completely reimagines the original color for something new.



14651292



16748963



9422047



7365991



11534365



3145736

Previews

White Background



This preview shows how the Decimal color 14651292 looks on a white background.

Color Contrast Check

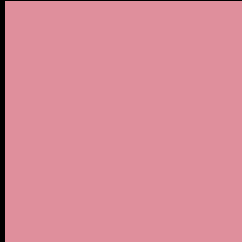
Large Text (above 18pt) WCAG AA × Fail

Any Text WCAG AA × Fail

Large Text (above 18pt) WCAG AAA × Fail

Any Text WCAG AAA × Fail

Black Background



This preview shows how the Decimal color 14651292 looks on a black background.

Color Contrast Check

Large Text (above 18pt) WCAG AA ✓ Pass

Any Text WCAG AA ✓ Pass

Large Text (above 18pt) WCAG AAA ✓ Pass

Any Text WCAG AAA ✓ Pass

If you want to check with other color combinations, try the [Color Contrast Checker](#).

Decimal 14651292 Background



This preview shows how black text looks on a background with the Decimal color 14651292.




This preview shows how white text looks on a background with the Decimal color 14651292.

Color Blindness Simulation

Color vision deficiency is a very complex topic, and I could not describe the different causes any better than Wikipedia does, so if you want to learn more, you should check out their [article about color blindness](#).

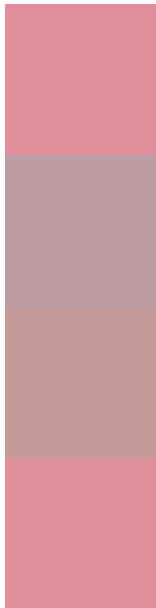
Dichromacy





Tritanopia
14651290

Trichromacy



Original Color
14651292

Protanomaly
12361124

Deuteranomaly
13081242

Tritanomaly
14651291

Monochromacy



Original Color
14651292

Achromatopsia
11053224

Achromatomaly
12361636

CSS Examples

Text

The CSS property to change the color of the text to Decimal 14651292 is called "color". The color property can be set on classes, ids or directly on the HTML element.

This example shows how text in the color #DF8F9C looks like.

```
.text, #text, p{  
    color:#DF8F9C  
}
```

If you want to add a text shadow in that color use the text-shadow property, you can generate a text shadow directly with our [CSS Text Shadow Generator](#).

Here you see how black text with a 4 pixel #DF8F9C colored shadow looks like.

```
.shadow{ text-shadow: 4px 4px 2px #DF8F9C
}
```

Border

The CSS property to change the border of an element to Decimal 14651292 is called "border". The border property can be set on classes, ids or directly on the HTML element.

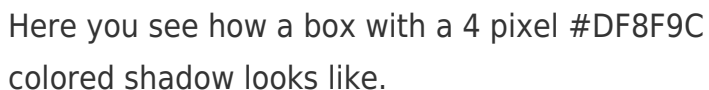
This example shows the color as border, it can be applied via the CSS property "border" or "border-color".

```
.border, #border, table{ border:4px solid
#DF8F9C }
```

If only the border color should be changed use the property `border-color`.

```
.border{ border-color:#DF8F9C }
```

If you want to add a box shadow in that color use:



Here you see how a box with a 4 pixel `#DF8F9C` colored shadow looks like.

```
.boxshadow{ -moz-box-shadow:4px 4px 4px  
4px #DF8F9C; -webkit-box-shadow:4px 4px  
4px 4px #DF8F9C; box-shadow:4px 4px 4px  
4px #DF8F9C }
```

Background

The CSS property to change the background color of an element to Decimal 14651292 is called "background". The background property can be set on classes, ids or directly on the HTML element.

```
.background, #background, body{  
background:#DF8F9C }
```

If only the background color should be changed can be used:

```
.background{ background-color:#DF8F9C }
```

This example shows the color as background, it is applied via the CSS property "background".

To optimize and compress your CSS code, you can use our [online CSS compressor and optimizer](#) based on csstidy. If you want to create a linear or radial gradient as background or border, check our [CSS Gradient Generator](#).

Hey! You found this booklet interesting? Support Converting Colors with the new Membership Option!

The pro membership hides all ads, plus gives you double the colors in the color bucket, and more awesome pro features!

[Learn more, Memberships starting at \\$2.50/m!](#)

**Follow me
on Twitter!**

@ConvertingColor