

Converting Colors

Decimal(14653614)

Have a look what the booklet for
Decimal(14653614) contains.

Decimal(14653614)	3
<i>Conversions</i>	4
<i>Details</i>	6
<i>Harmonies</i>	11
<i>Previews</i>	23
<i>Color Blindness Simulation</i>	26
<i>CSS Examples</i>	29

Color

Decimal(14653614)

Conversions

Conversions Part 1

Format	Color
Hex	DF98AE
RGB	223, 152, 174
RGB Percent	87%, 60%, 68%
CMY	0.1255, 0.4039, 0.3176
CMYK	0.00, 0.32, 0.22, 0.13
HSL	341°, 53%, 74%
HSV	341°, 32%, 87%
XYZ	49.2996, 41.2004, 45.3985
YIQ	175.7370, 35.2540, 21.8940

Conversions

Conversions Part 2

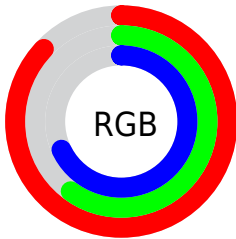
Format	Color
R _Y B	223, 152, 174
Decimal	14653614
CIE Lab	70.32, 29.68, -0.59
CIE LCh	70, 29.688, 358.856
Yxy	41.2004, 0.3628, 0.3032
Android (android.graphics.Color)	4292843694 (0xFFDF98AE)
YUV	175.7370, -0.8563, 41.4497
Hunter-Lab	64.1876, 24.7697, 2.9967

Details

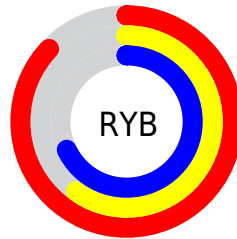
The Decimal color **14653614** is a light color, and the websafe version is hex **CC9999**. A complement of this color would be **10018761**, and the grayscale version is **11579568**.

A 20% lighter version of the original color is **16764901**, and **10904698** is the 20% darker color. If you saturate the color by 10%, you get **14647967**, and if you desaturate by 10%, it is **14659261**.

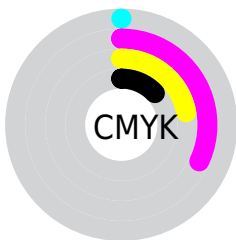
Distribution



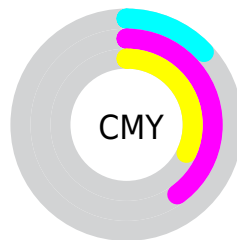
- Red (87%)
- Green (60%)
- Blue (68%)



- Red (87%)
- Yellow (60%)
- Blue (68%)



- Cyan (0%)
- Magenta (32%)
- Yellow (22%)
- Black (13%)



- Cyan (13%)
- Magenta (40%)
- Yellow (32%)

Brightness & Saturation Gradients

These gradients show how the Decimal color 14653614 changes by changing the brightness by 10 percent. The first figure shows a shift by +10% for each color and the second figure -10%.

Similar to the brightness gradients but the following saturation gradients show a change of the Decimal color 14653614 by changing the saturation by 10% instead.

 14653614

 14653614

16777215

 12746387

 16764901

 10904698

 16772095

 9128801

 7418697

 5708851

 4064030

 2752516

 0

 14653614

 14653614

 14647967

 14659261

 14642063

 14665165

 14636416

 14670812

 14630768

 14676460

 14624865

 14680059

 14619218

 14680063

 14614597

Harmonies

Analogous

The Analogous color harmony consists of three colors that are next to each other on the color wheel.



13475272



14653614



14785171

Triad

The Triadic color harmony groups three colors that are evenly spaced from another and form a triangle on the color wheel.



14653614



10793596



6534873

Complementary

The Complementary color scheme is a pair of colors which are on the opposite of each other on the color wheel.



14653614



10018761

Split Complementary

Split-complementary colors differ from the complementary color scheme. The scheme consists of three colors, the original color and two neighbors of the complement color.



5683909



14653614



8697999

Square

The Square scheme is like the rectangle color scheme, but the four colors are evenly spaced on the color wheel.



14653614



12626550



6798250



8892385

Rectangle

The Rectangle color scheme consists of four colors that form a rectangle on the color wheel.



14653614



14392964



6798250



6011092

Sweetspot

The Sweet Spot groups the original color and five complimentary colors.



14653614



16770797



13211871



8417397



0



8421504

Same Dimension

The Same Dimension uses a secret algorithm to generate beautiful new colors.



14653614



16752316



14656920



7365992



11534391



3145743

Inverse Universe

The Inverse Universe completely reimagines the original color for something new.



14653614



16752316



10015455



7365992



11534391



3145743

Previews

White Background



This preview shows how the Decimal color 14653614 looks on a white background.

Color Contrast Check

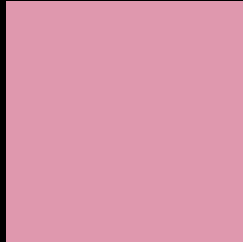
Large Text (above 18pt) WCAG AA × Fail

Any Text WCAG AA × Fail

Large Text (above 18pt) WCAG AAA × Fail

Any Text WCAG AAA × Fail

Black Background



This preview shows how the Decimal color 14653614 looks on a black background.

Color Contrast Check

Large Text (above 18pt) WCAG AA ✓ Pass

Any Text WCAG AA ✓ Pass

Large Text (above 18pt) WCAG AAA ✓ Pass

Any Text WCAG AAA ✓ Pass

If you want to check with other color combinations, try the [Color Contrast Checker](#).

Decimal 14653614 Background



This preview shows how black text looks on a background with the Decimal color 14653614.

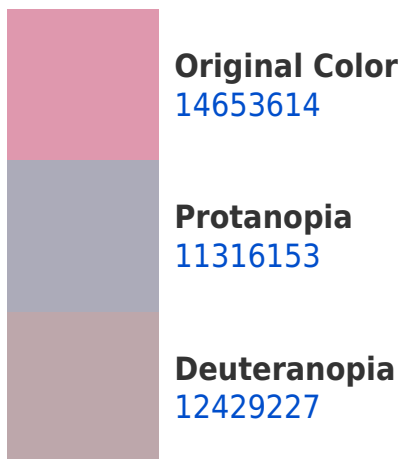



This preview shows how white text looks on a background with the Decimal color 14653614.

Color Blindness Simulation

Color vision deficiency is a very complex topic, and I could not describe the different causes any better than Wikipedia does, so if you want to learn more, you should check out their [article about color blindness](#).

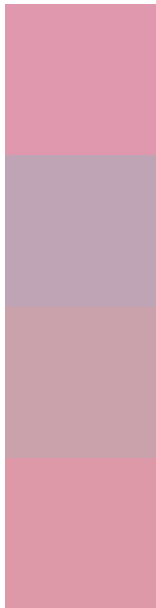
Dichromacy





Tritanopia
14588325

Trichromacy



Original Color
14653614

Protanomaly
12559541

Deuteranomaly
13214380

Tritanomaly
14588328

Monochromacy



Original Color
14653614

Achromatopsia
11579568

Achromatomaly
12691375

CSS Examples

Text

The CSS property to change the color of the text to Decimal 14653614 is called "color". The color property can be set on classes, ids or directly on the HTML element.

This example shows how text in the color #DF98AE looks like.

```
.text, #text, p{  
    color:#DF98AE  
}
```

If you want to add a text shadow in that color use the text-shadow property, you can generate a text shadow directly with our [CSS Text Shadow Generator](#).

Here you see how black text with a 4 pixel #DF98AE colored shadow looks like.

```
.shadow{ text-shadow: 4px 4px 2px #DF98AE
}
```

Border

The CSS property to change the border of an element to Decimal 14653614 is called "border". The border property can be set on classes, ids or directly on the HTML element.

This example shows the color as border, it can be applied via the CSS property "border" or "border-color".

```
.border, #border, table{ border:4px solid
#DF98AE }
```

If only the border color should be changed use the property `border-color`.

```
.border{ border-color:#DF98AE }
```

If you want to add a box shadow in that color use:

Here you see how a box with a 4 pixel #DF98AE colored shadow looks like.

```
.boxshadow{ -moz-box-shadow:4px 4px 4px  
4px #DF98AE; -webkit-box-shadow:4px 4px  
4px 4px #DF98AE; box-shadow:4px 4px 4px  
4px #DF98AE }
```

Background

The CSS property to change the background color of an element to Decimal 14653614 is called "background". The background property can be set on classes, ids or directly on the HTML element.

```
.background, #background, body{  
background:#DF98AE }
```

If only the background color should be changed can be used:

```
.background{ background-color:#DF98AE }
```

This example shows the color as background, it is applied via the CSS property "background".

To optimize and compress your CSS code, you can use our [online CSS compressor and optimizer](#) based on csstidy. If you want to create a linear or radial gradient as background or border, check our [CSS Gradient Generator](#).

Hey! You found this booklet interesting? Support Converting Colors with the new Membership Option!

The pro membership hides all ads, plus gives you double the colors in the color bucket, and more awesome pro features!

[Learn more, Memberships starting at \\$2.50/m!](#)

**Follow me
on Twitter!**

@ConvertingColor