

# Converting Colors

Decimal(14654396)

Have a look what the booklet for  
Decimal(14654396) contains.

<b>Decimal(14654396)</b> .....	3
<i><b>Conversions</b></i> .....	4
<i><b>Details</b></i> .....	6
<i><b>Harmonies</b></i> .....	11
<i><b>Previews</b></i> .....	23
<i><b>Color Blindness Simulation</b></i> .....	26
<i><b>CSS Examples</b></i> .....	29

# **Color**

**Decimal(14654396)**

# Conversions

## Conversions Part 1

Format	Color
Hex	DF9BBC
RGB	223, 155, 188
RGB Percent	87%, 61%, 74%
CMY	0.1255, 0.3922, 0.2627
CMYK	0.00, 0.30, 0.16, 0.13
HSL	331°, 52%, 74%
HSV	331°, 30%, 87%
XYZ	51.2299, 42.7615, 53.1306
YIQ	179.0940, 29.9350, 24.6790

# Conversions

## Conversions Part 2

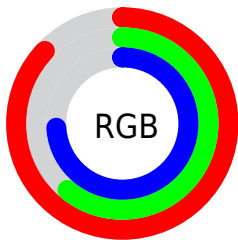
Format	Color
R <sub>Y</sub> B	223, 155, 188
Decimal	14654396
CIE Lab	71.39, 30.22, -6.78
CIE LCh	71, 30.968, 347.356
Yxy	42.7615, 0.3482, 0.2907
Android (android.graphics.Color)	4292844476 (0xFFDF9BBC)
YUV	179.0940, 4.3907, 38.5056
Hunter-Lab	65.3923, 25.4047, -2.3980

# Details

The Decimal color **14654396** is a light color, and the websafe version is hex **CC99CC**. A complement of this color would be **10215358**, and the grayscale version is **11776947**.

A 20% lighter version of the original color is **16765684**, and **10971015** is the 20% darker color. If you saturate the color by 10%, you get **14648753**, and if you desaturate by 10%, it is **14660039**.

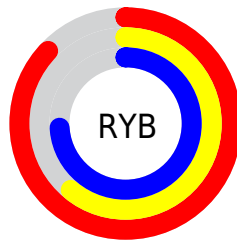
# Distribution



Red (87%)

Green (61%)

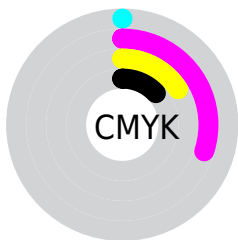
Blue (74%)



Red (87%)

Yellow (61%)

Blue (74%)

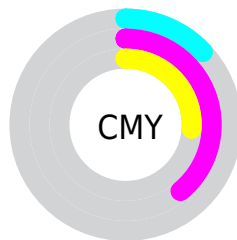


Cyan (0%)

Magenta (30%)

Yellow (16%)

Black (13%)



Cyan (13%)

Magenta (39%)

Yellow (26%)

# Brightness & Saturation Gradients

These gradients show how the Decimal color 14654396 changes by changing the brightness by 10 percent. The first figure shows a shift by +10% for each color and the second figure -10%.

Similar to the brightness gradients but the following saturation gradients show a change of the Decimal color 14654396 by changing the saturation by 10% instead.



 14654396

 14654396

16777215

 12812705

 16765684

 10971015

 16773119

 9195117

 7419477

 5774910

 4130088

 2752532

 0

 14654396

 14654396

 14648753

 14660039

 14642853

 14665939

 14637210

 14671582

 14631566

 14677226

 14625667

 14680053

 14620023

 14680063

 14614636

# Harmonies

## Analogous

The Analogous color harmony consists of three colors that are next to each other on the color wheel.



13083349



14654396



15178399

# Triad

The Triadic color harmony groups three colors that are evenly spaced from another and form a triangle on the color wheel.



14654396



11711096



5815511

# Complementary

The Complementary color scheme is a pair of colors which are on the opposite of each other on the color wheel.



14654396



10215358

# Split Complementary

Split-complementary colors differ from the complementary color scheme. The scheme consists of three colors, the original color and two neighbors of the complement color.



5750463



14654396



9615752

# Square

The Square scheme is like the rectangle color scheme, but the four colors are evenly spaced on the color wheel.



14654396



13478264



7454370



7910885

# Rectangle

The Rectangle color scheme consists of four colors that form a rectangle on the color wheel.



14654396



14982542



7454370



5553616



# Sweetspot

The Sweet Spot groups the original color and five complimentary colors.



14654396



16771315



12426207



8417656



0



8421504



# Same Dimension

The Same Dimension uses a secret algorithm to generate beautiful new colors.



14654396



16753102



14654363



7365994



11534421



3145752



# Inverse Universe

The Inverse Universe completely reimagines the original color for something new.



14654396



16753102



10215391



7365994



11534421

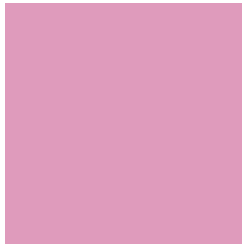


3145752



# Previews

## White Background



This preview shows how the Decimal color 14654396 looks on a white background.

## Color Contrast Check

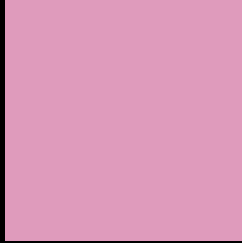
Large Text (above 18pt) WCAG AA × Fail

Any Text WCAG AA × Fail

Large Text (above 18pt) WCAG AAA × Fail

Any Text WCAG AAA × Fail

# Black Background



This preview shows how the Decimal color 14654396 looks on a black background.

## Color Contrast Check

Large Text (above 18pt) WCAG AA ✓ Pass

Any Text WCAG AA ✓ Pass

Large Text (above 18pt) WCAG AAA ✓ Pass

Any Text WCAG AAA ✓ Pass

If you want to check with other color combinations, try the [Color Contrast Checker](#).



## Decimal 14654396 Background



This preview shows how black text looks on a background with the Decimal color 14654396.

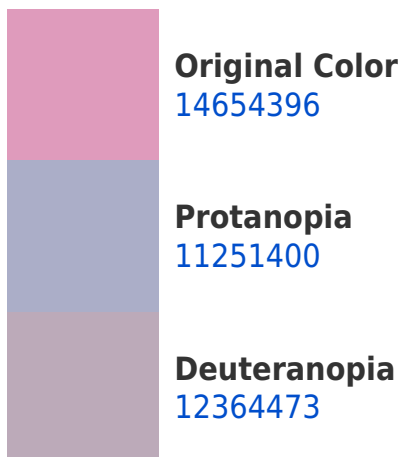


This preview shows how white text looks on a background with the Decimal color 14654396.

# Color Blindness Simulation

Color vision deficiency is a very complex topic, and I could not describe the different causes any better than Wikipedia does, so if you want to learn more, you should check out their [article about color blindness](#).

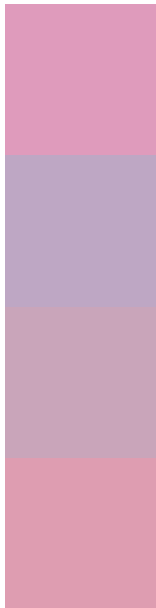
## Dichromacy





**Tritanopia**  
14524074

# Trichromacy



**Original Color**  
14654396

**Protanomaly**  
12494788

**Deuteranomaly**  
13215162

**Tritanomaly**  
14589361

# Monochromacy



**Original Color**  
14654396

**Achromatopsia**  
11776947

**Achromatomaly**  
12823222

# CSS Examples

## Text

The CSS property to change the color of the text to Decimal 14654396 is called "color". The color property can be set on classes, ids or directly on the HTML element.

This example shows how text in the color #DF9BBC looks like.

```
.text, #text, p{  
    color:#DF9BBC  
}
```

If you want to add a text shadow in that color use the text-shadow property, you can generate a text shadow directly with our [CSS Text Shadow Generator](#).

Here you see how black text with a 4 pixel #DF9BBC colored shadow looks like.

```
.shadow{ text-shadow: 4px 4px 2px #DF9BBC
}
```

## Border

The CSS property to change the border of an element to Decimal 14654396 is called "border". The border property can be set on classes, ids or directly on the HTML element.

This example shows the color as border, it can be applied via the CSS property "border" or "border-color".

```
.border, #border, table{ border:4px solid
#DF9BBC }
```

If only the border color should be changed use the property `border-color`.

```
.border{ border-color:#DF9BBC }
```

If you want to add a box shadow in that color use:

Here you see how a box with a 4 pixel #DF9BBC colored shadow looks like.

```
.boxshadow{ -moz-box-shadow:4px 4px 4px  
4px #DF9BBC; -webkit-box-shadow:4px 4px  
4px 4px #DF9BBC; box-shadow:4px 4px 4px  
4px #DF9BBC }
```

# Background

The CSS property to change the background color of an element to Decimal 14654396 is called "background". The background property can be set on classes, ids or directly on the HTML element.

```
.background, #background, body{  
background:#DF9BBC }
```

If only the background color should be changed can be used:

```
.background{ background-color:#DF9BBC }
```

This example shows the color as background, it is applied via the CSS property "background".

To optimize and compress your CSS code, you can use our [online CSS compressor and optimizer](#) based on csstidy. If you want to create a linear or radial gradient as background or border, check our [CSS Gradient Generator](#).



Hey! You found this booklet interesting? Support Converting Colors with the new Membership Option!

The pro membership hides all ads, plus gives you double the colors in the color bucket, and more awesome pro features!

**[Learn more, Memberships starting at \\$2.50/m!](#)**

**Follow me  
on Twitter!**

@ConvertingColor