

Converting Colors

Decimal(14655146)

Have a look what the booklet for
Decimal(14655146) contains.

Decimal(14655146)	3
<i>Conversions</i>	4
<i>Details</i>	6
<i>Harmonies</i>	11
<i>Previews</i>	23
<i>Color Blindness Simulation</i>	26
<i>CSS Examples</i>	29

Color

Decimal(14655146)

Conversions

Conversions Part 1

Format	Color
Hex	DF9EAA
RGB	223, 158, 170
RGB Percent	87%, 62%, 67%
CMY	0.1255, 0.3804, 0.3333
CMYK	0.00, 0.29, 0.24, 0.13
HSL	349°, 50%, 75%
HSV	349°, 29%, 87%
XYZ	49.9140, 43.0440, 43.7078
YIQ	178.8030, 34.8880, 17.5120

Conversions

Conversions Part 2

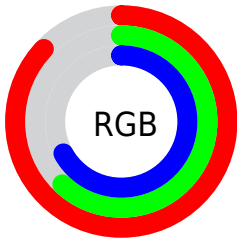
Format	Color
R _Y B	223, 158, 170
Decimal	14655146
CIE Lab	71.58, 25.87, 3.47
CIE LCh	72, 26.107, 7.644
Yxy	43.0440, 0.3652, 0.3150
Android (android.graphics.Color)	4292845226 (0xFFDF9EAA)
YUV	178.8030, -4.3399, 38.7608
Hunter-Lab	65.6079, 20.9876, 6.4267

Details

The Decimal color **14655146** is a light color, and the websafe version is hex **CC9999**. A complement of this color would be **10411987**, and the grayscale version is **11776947**.

A 20% lighter version of the original color is **16766433**, and **10971766** is the 20% darker color. If you saturate the color by 10%, you get **14649496**, and if you desaturate by 10%, it is **14660796**.

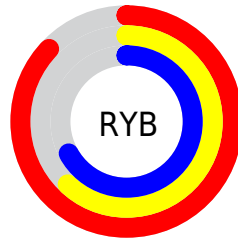
Distribution



Red (87%)

Green (62%)

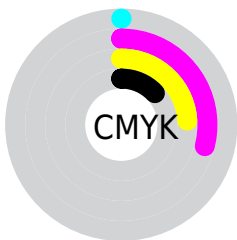
Blue (67%)



Red (87%)

Yellow (62%)

Blue (67%)

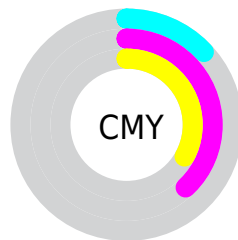


Cyan (0%)

Magenta (29%)

Yellow (24%)

Black (13%)



Cyan (13%)

Magenta (38%)

Yellow (33%)

Brightness & Saturation Gradients

These gradients show how the Decimal color 14655146 changes by changing the brightness by 10 percent. The first figure shows a shift by +10% for each color and the second figure -10%.

Similar to the brightness gradients but the following saturation gradients show a change of the Decimal color 14655146 by changing the saturation by 10% instead.

 14655146

 14655146

16777215

 12747920

 16766433

 10971766

 16773886

 9130333

 7420230

 5710384

 4066075

 2752512

 0

 14655146

 14655146

 14649496

 14660796

 14643590

 14666702

 14637939

 14672353

 14632289

 14678003

 14626383

 14680063

 14620733

 14615083

 14614569

Harmonies

Analogous

The Analogous color harmony consists of three colors that are next to each other on the color wheel.



13869250



14655146



14590355

Triad

The Triadic color harmony groups three colors that are evenly spaced from another and form a triangle on the color wheel.



14655146



10532745



8107995

Complementary

The Complementary color scheme is a pair of colors which are on the opposite of each other on the color wheel.



14655146



10411987

Split Complementary

Split-complementary colors differ from the complementary color scheme. The scheme consists of three colors, the original color and two neighbors of the complement color.



6929356



14655146



8764317

Square

The Square scheme is like the rectangle color scheme, but the four colors are evenly spaced on the color wheel.



14655146



12300416



7323061



10203102

Rectangle

The Rectangle color scheme consists of four colors that form a rectangle on the color wheel.



14655146



14067080



7323061



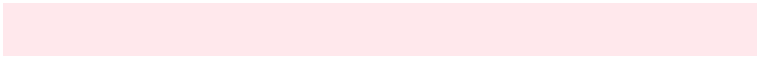
7584215

Sweetspot

The Sweet Spot groups the original color and five complimentary colors.



14655146



16771308



13803231



8417652



0



8421504

Same Dimension

The Same Dimension uses a secret algorithm to generate beautiful new colors.



14655146



16754358



14660254



7365991



11534368



3145737

Inverse Universe

The Inverse Universe completely reimagines the original color for something new.



14655146



16754358



10406879



7365991



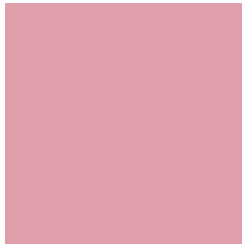
11534368



3145737

Previews

White Background



This preview shows how the Decimal color 14655146 looks on a white background.

Color Contrast Check

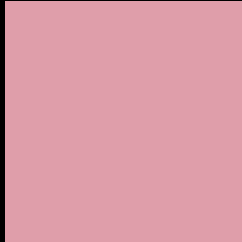
Large Text (above 18pt) WCAG AA × Fail

Any Text WCAG AA × Fail

Large Text (above 18pt) WCAG AAA × Fail

Any Text WCAG AAA × Fail

Black Background



This preview shows how the Decimal color 14655146 looks on a black background.

Color Contrast Check

Large Text (above 18pt) WCAG AA ✓ Pass

Any Text WCAG AA ✓ Pass

Large Text (above 18pt) WCAG AAA ✓ Pass

Any Text WCAG AAA ✓ Pass

If you want to check with other color combinations, try the [Color Contrast Checker](#).

Decimal 14655146 Background



This preview shows how black text looks on a background with the Decimal color 14655146.



This preview shows how white text looks on a background with the Decimal color 14655146.

Color Blindness Simulation

Color vision deficiency is a very complex topic, and I could not describe the different causes any better than Wikipedia does, so if you want to learn more, you should check out their [article about color blindness](#).


Dichromacy



Original Color
14655146

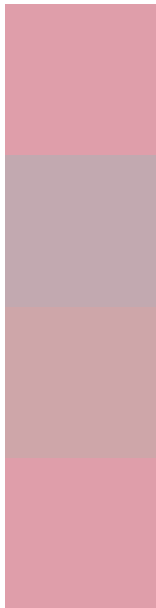
Protanopia
11710388

Deuteranopia
12888744



Tritanopia
14655146

Trichromacy



Original Color
14655146

Protanomaly
12757424

Deuteranomaly
13543081

Tritanomaly
14655146

Monochromacy



Original Color
14655146

Achromatopsia
11776947

Achromatomaly
12823472

CSS Examples

Text

The CSS property to change the color of the text to Decimal 14655146 is called "color". The color property can be set on classes, ids or directly on the HTML element.

This example shows how text in the color #DF9EAA looks like.

```
.text, #text, p{  
    color:#DF9EAA  
}
```

If you want to add a text shadow in that color use the text-shadow property, you can generate a text shadow directly with our [CSS Text Shadow Generator](#).

Here you see how black text with a 4 pixel #DF9EAA colored shadow looks like.

```
.shadow{ text-shadow: 4px 4px 2px #DF9EAA
}
```

Border

The CSS property to change the border of an element to Decimal 14655146 is called "border". The border property can be set on classes, ids or directly on the HTML element.

This example shows the color as border, it can be applied via the CSS property "border" or "border-color".

```
.border, #border, table{ border:4px solid
#DF9EAA }
```

If only the border color should be changed use the property `border-color`.

```
.border{ border-color:#DF9EAA }
```

If you want to add a box shadow in that color use:

Here you see how a box with a 4 pixel #DF9EAA colored shadow looks like.

```
.boxshadow{ -moz-box-shadow:4px 4px 4px  
4px #DF9EAA; -webkit-box-shadow:4px 4px  
4px 4px #DF9EAA; box-shadow:4px 4px 4px  
4px #DF9EAA }
```

Background

The CSS property to change the background color of an element to Decimal 14655146 is called "background". The background property can be set on classes, ids or directly on the HTML element.

```
.background, #background, body{  
background:#DF9EAA }
```

If only the background color should be changed can be used:

```
.background{ background-color:#DF9EAA }
```

This example shows the color as background, it is applied via the CSS property "background".

To optimize and compress your CSS code, you can use our [online CSS compressor and optimizer](#) based on csstidy. If you want to create a linear or radial gradient as background or border, check our [CSS Gradient Generator](#).

Hey! You found this booklet interesting? Support Converting Colors with the new Membership Option!

The pro membership hides all ads, plus gives you double the colors in the color bucket, and more awesome pro features!

[Learn more, Memberships starting at \\$2.50/m!](#)

**Follow me
on Twitter!**

@ConvertingColor