

Converting Colors

Decimal(14655153)

Have a look what the booklet for
Decimal(14655153) contains.

Decimal(14655153)	3
<i>Conversions</i>	4
<i>Details</i>	6
<i>Harmonies</i>	11
<i>Previews</i>	23
<i>Color Blindness Simulation</i>	26
<i>CSS Examples</i>	29

Color

Decimal(14655153)

Conversions

Conversions Part 1

Format	Color
Hex	DF9EB1
RGB	223, 158, 177
RGB Percent	87%, 62%, 69%
CMY	0.1255, 0.3804, 0.3059
CMYK	0.00, 0.29, 0.21, 0.13
HSL	342°, 50%, 75%
HSV	342°, 29%, 87%
XYZ	50.5941, 43.3160, 47.2892
YIQ	179.6010, 32.6410, 19.6890

Conversions

Conversions Part 2

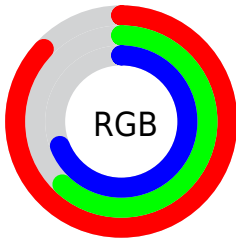
Format	Color
R _Y B	223, 158, 177
Decimal	14655153
CIE Lab	71.77, 26.91, -0.13
CIE LCh	72, 26.906, 359.715
Yxy	43.3160, 0.3583, 0.3068
Android (android.graphics.Color)	4292845233 (0xFFDF9EB1)
YUV	179.6010, -1.2823, 38.0609
Hunter-Lab	65.8149, 22.0428, 3.4695

Details

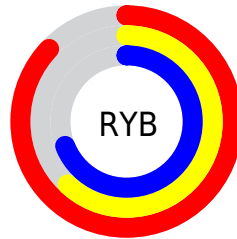
The Decimal color **14655153** is a light color, and the websafe version is hex **CC9999**. A complement of this color would be **10411980**, and the grayscale version is **11842740**.

A 20% lighter version of the original color is **16766441**, and **10971773** is the 20% darker color. If you saturate the color by 10%, you get **14649505**, and if you desaturate by 10%, it is **14660801**.

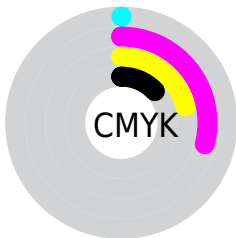
Distribution



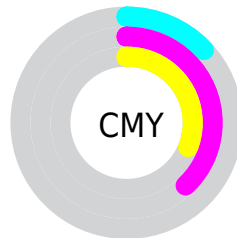
- Red (87%)
- Green (62%)
- Blue (69%)



- Red (87%)
- Yellow (62%)
- Blue (69%)



- Cyan (0%)
- Magenta (29%)
- Yellow (21%)
- Black (13%)



- Cyan (13%)
- Magenta (38%)
- Yellow (31%)

Brightness & Saturation Gradients

These gradients show how the Decimal color 14655153 changes by changing the brightness by 10 percent. The first figure shows a shift by +10% for each color and the second figure -10%.

Similar to the brightness gradients but the following saturation gradients show a change of the Decimal color 14655153 by changing the saturation by 10% instead.

 14655153

 14655153

16777215

 12813462

 16766441

 10971773

 16773887

 9195876

 7420236

 5710389

 4131360

 2752520

 0

 14655153

 14655153

 14649505

 14660801

 14643601

 14666705

 14637954

 14672352

 14632306

 14678000

 14626402

 14680063

 14620754

 14615107

 14614593

Harmonies

Analogous

The Analogous color harmony consists of three colors that are next to each other on the color wheel.



13607625



14655153



14786713

Triad

The Triadic color harmony groups three colors that are evenly spaced from another and form a triangle on the color wheel.



14655153



11056773



7518681

Complementary

The Complementary color scheme is a pair of colors which are on the opposite of each other on the color wheel.



14655153



10411980

Split Complementary

Split-complementary colors differ from the complementary color scheme. The scheme consists of three colors, the original color and two neighbors of the complement color.



6733255



14655153



9157526

Square

The Square scheme is like the rectangle color scheme, but the four colors are evenly spaced on the color wheel.



14655153



12758655



7519919



9548512

Rectangle

The Rectangle color scheme consists of four colors that form a rectangle on the color wheel.



14655153



14394251



7519919



7060436

Sweetspot

The Sweet Spot groups the original color and five complimentary colors.



14655153



16771311



13410015



8417654



0



8421504

Same Dimension

The Same Dimension uses a secret algorithm to generate beautiful new colors.



14655153



16754368



14658462



7365992



11534387



3145742

Inverse Universe

The Inverse Universe completely reimagines the original color for something new.



14655153



16754368



10408671



7365992



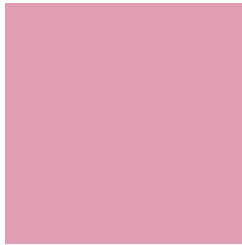
11534387



3145742

Previews

White Background



This preview shows how the Decimal color 14655153 looks on a white background.

Color Contrast Check

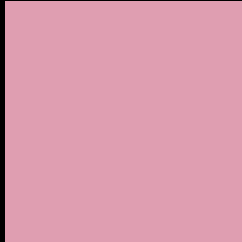
Large Text (above 18pt) WCAG AA × Fail

Any Text WCAG AA × Fail

Large Text (above 18pt) WCAG AAA × Fail

Any Text WCAG AAA × Fail

Black Background



This preview shows how the Decimal color 14655153 looks on a black background.

Color Contrast Check

Large Text (above 18pt) WCAG AA ✓ Pass

Any Text WCAG AA ✓ Pass

Large Text (above 18pt) WCAG AAA ✓ Pass

Any Text WCAG AAA ✓ Pass

If you want to check with other color combinations, try the [Color Contrast Checker](#).

Decimal 14655153 Background



This preview shows how black text looks on a background with the Decimal color 14655153.



This preview shows how white text looks on a background with the Decimal color 14655153.

Color Blindness Simulation

Color vision deficiency is a very complex topic, and I could not describe the different causes any better than Wikipedia does, so if you want to learn more, you should check out their [article about color blindness](#).


Dichromacy



Original Color
14655153

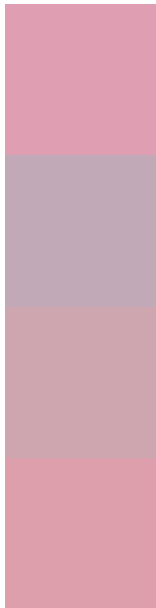
Protanopia
11579323

Deuteranopia
12757935



Tritanopia
14589867

Trichromacy



Original Color
14655153

Protanomaly
12691895

Deuteranomaly
13477552

Tritanomaly
14589869

Monochromacy



Original Color
14655153

Achromatopsia
11842740

Achromatomaly
12889267

CSS Examples

Text

The CSS property to change the color of the text to Decimal 14655153 is called "color". The color property can be set on classes, ids or directly on the HTML element.

This example shows how text in the color #DF9EB1 looks like.

```
.text, #text, p{  
    color:#DF9EB1  
}
```

If you want to add a text shadow in that color use the text-shadow property, you can generate a text shadow directly with our [CSS Text Shadow Generator](#).

Here you see how black text with a 4 pixel #DF9EB1 colored shadow looks like.

```
.shadow{ text-shadow: 4px 4px 2px #DF9EB1  
}
```

Border

The CSS property to change the border of an element to Decimal 14655153 is called "border". The border property can be set on classes, ids or directly on the HTML element.

This example shows the color as border, it can be applied via the CSS property "border" or "border-color".

```
.border, #border, table{ border:4px solid  
#DF9EB1 }
```

If only the border color should be changed use the property `border-color`.

```
.border{ border-color:#DF9EB1 }
```

If you want to add a box shadow in that color use:

Here you see how a box with a 4 pixel #DF9EB1 colored shadow looks like.

```
.boxshadow{ -moz-box-shadow:4px 4px 4px  
4px #DF9EB1; -webkit-box-shadow:4px 4px  
4px 4px #DF9EB1; box-shadow:4px 4px 4px  
4px #DF9EB1 }
```

Background

The CSS property to change the background color of an element to Decimal 14655153 is called "background". The background property can be set on classes, ids or directly on the HTML element.

```
.background, #background, body{  
background:#DF9EB1 }
```

If only the background color should be changed can be used:

```
.background{ background-color:#DF9EB1 }
```

This example shows the color as background, it is applied via the CSS property "background".

To optimize and compress your CSS code, you can use our [online CSS compressor and optimizer](#) based on csstidy. If you want to create a linear or radial gradient as background or border, check our [CSS Gradient Generator](#).

Hey! You found this booklet interesting? Support Converting Colors with the new Membership Option!

The pro membership hides all ads, plus gives you double the colors in the color bucket, and more awesome pro features!

[Learn more, Memberships starting at \\$2.50/m!](#)

**Follow me
on Twitter!**

@ConvertingColor