

# Converting Colors

Decimal(14655913)

Have a look what the booklet for  
Decimal(14655913) contains.

<b>Decimal(14655913)</b> .....	3
<i><b>Conversions</b></i> .....	4
<i><b>Details</b></i> .....	6
<i><b>Harmonies</b></i> .....	11
<i><b>Previews</b></i> .....	23
<i><b>Color Blindness Simulation</b></i> .....	26
<i><b>CSS Examples</b></i> .....	29

# **Color**

**Decimal(14655913)**

# Conversions

## Conversions Part 1

Format	Color
Hex	DFA1A9
RGB	223, 161, 169
RGB Percent	87%, 63%, 66%
CMY	0.1255, 0.3686, 0.3373
CMYK	0.00, 0.28, 0.24, 0.13
HSL	352°, 49%, 75%
HSV	352°, 28%, 87%
XYZ	50.3377, 44.0423, 43.3840
YIQ	180.4500, 34.3840, 15.6320

# Conversions

## Conversions Part 2

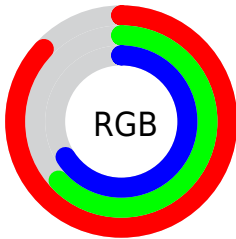
Format	Color
R <sub>Y</sub> B	223, 161, 169
Decimal	14655913
CIE Lab	72.26, 24.12, 5.00
CIE LCh	72, 24.629, 11.705
Yxy	44.0423, 0.3654, 0.3197
Android (android.graphics.Color)	4292845993 (0xFFDFA1A9)
YUV	180.4500, -5.6448, 37.3164
Hunter-Lab	66.3644, 19.2556, 7.6957

# Details

The Decimal color **14655913** is a light color, and the websafe version is hex **CC9999**. A complement of this color would be **10608599**, and the grayscale version is **11842740**.

A 20% lighter version of the original color is **16767200**, and **10972533** is the 20% darker color. If you saturate the color by 10%, you get **14650262**, and if you desaturate by 10%, it is **14661564**.

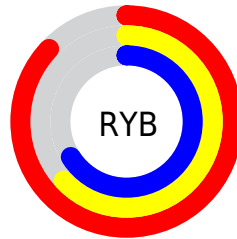
# Distribution



Red (87%)

Green (63%)

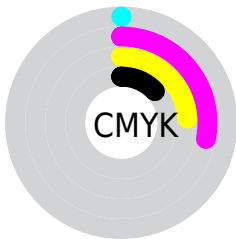
Blue (66%)



Red (87%)

Yellow (63%)

Blue (66%)

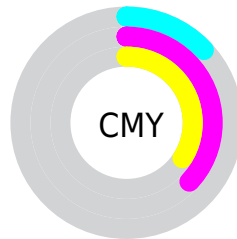


Cyan (0%)

Magenta (28%)

Yellow (24%)

Black (13%)



Cyan (13%)

Magenta (37%)

Yellow (34%)

# Brightness & Saturation Gradients

These gradients show how the Decimal color 14655913 changes by changing the brightness by 10 percent. The first figure shows a shift by +10% for each color and the second figure -10%.

Similar to the brightness gradients but the following saturation gradients show a change of the Decimal color 14655913 by changing the saturation by 10% instead.



 14655913

 14655913

16777215

 12748687

 16767200

 10972533

 16774653

 9131100

 7420997

 5711151

 4067098

 2752512

 0

 14655913

 14655913

 14650262

 14661564

 14644354

 14667472

 14638703

 14673123

 14633051

 14678775

 14627144

 14680063

 14621492

 14615841

 14614557

# Harmonies

## Analogous

The Analogous color harmony consists of three colors that are next to each other on the color wheel.



14001088



14655913



14460052

# Triad

The Triadic color harmony groups three colors that are evenly spaced from another and form a triangle on the color wheel.



14655913



10533263



8697819

# Complementary

The Complementary color scheme is a pair of colors which are on the opposite of each other on the color wheel.



14655913



10608599

# Split Complementary

Split-complementary colors differ from the complementary color scheme. The scheme consists of three colors, the original color and two neighbors of the complement color.



7519438



14655913



8830370

# Square

The Square scheme is like the rectangle color scheme, but the four colors are evenly spaced on the color wheel.



14655913



12170117



7651001



10662109

# Rectangle

The Rectangle color scheme consists of four colors that form a rectangle on the color wheel.



14655913



13937034



7651001



8174040



# Sweetspot

The Sweet Spot groups the original color and five complimentary colors.



14655913



16772077



14131679



8418164



0



8421504



# Same Dimension

The Same Dimension uses a secret algorithm to generate beautiful new colors.



14655913



16755638



14661793



7365990



11534359



3145734



# Inverse Universe

The Inverse Universe completely reimagines the original color for something new.



14655913



16755638



10602719



7365990



11534359

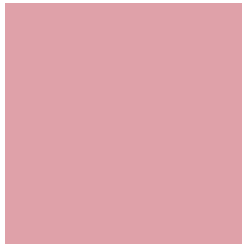


3145734



# Previews

## White Background



This preview shows how the Decimal color 14655913 looks on a white background.

## Color Contrast Check

Large Text (above 18pt) WCAG AA × Fail

Any Text WCAG AA × Fail

Large Text (above 18pt) WCAG AAA × Fail

Any Text WCAG AAA × Fail

# Black Background



This preview shows how the Decimal color 14655913 looks on a black background.

## Color Contrast Check

Large Text (above 18pt) WCAG AA ✓ Pass

Any Text WCAG AA ✓ Pass

Large Text (above 18pt) WCAG AAA ✓ Pass

Any Text WCAG AAA ✓ Pass

If you want to check with other color combinations, try the [Color Contrast Checker](#).



## Decimal 14655913 Background



This preview shows how black text looks on a background with the Decimal color 14655913.




This preview shows how white text looks on a background with the Decimal color 14655913.

# Color Blindness Simulation

Color vision deficiency is a very complex topic, and I could not describe the different causes any better than Wikipedia does, so if you want to learn more, you should check out their [article about color blindness](#).

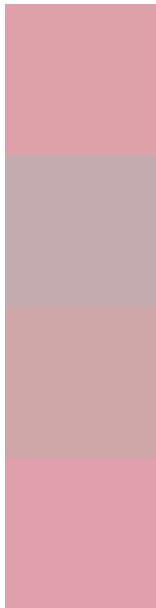
## Dichromacy





**Tritanopia**  
14655661

# Trichromacy



**Original Color**  
14655913

**Protanomaly**  
12889007

**Deuteranomaly**  
13674408

**Tritanomaly**  
14655660

# Monochromacy



**Original Color**  
14655913

**Achromatopsia**  
11842740

**Achromatomaly**  
12889520

# CSS Examples

## Text

The CSS property to change the color of the text to Decimal 14655913 is called "color". The color property can be set on classes, ids or directly on the HTML element.

This example shows how text in the color #DFA1A9 looks like.

```
.text, #text, p{  
    color:#DFA1A9  
}
```

If you want to add a text shadow in that color use the text-shadow property, you can generate a text shadow directly with our [CSS Text Shadow Generator](#).

Here you see how black text with a 4 pixel #DFA1A9 colored shadow looks like.

```
.shadow{ text-shadow: 4px 4px 2px #DFA1A9
}
```

## Border

The CSS property to change the border of an element to Decimal 14655913 is called "border". The border property can be set on classes, ids or directly on the HTML element.

This example shows the color as border, it can be applied via the CSS property "border" or "border-color".

```
.border, #border, table{ border:4px solid
#DFA1A9 }
```

If only the border color should be changed use the property `border-color`.

```
.border{ border-color:#DFA1A9 }
```

If you want to add a box shadow in that color use:

Here you see how a box with a 4 pixel #DFA1A9 colored shadow looks like.

```
.boxshadow{ -moz-box-shadow:4px 4px 4px  
4px #DFA1A9; -webkit-box-shadow:4px 4px  
4px 4px #DFA1A9; box-shadow:4px 4px 4px  
4px #DFA1A9 }
```

# Background

The CSS property to change the background color of an element to Decimal 14655913 is called "background". The background property can be set on classes, ids or directly on the HTML element.

```
.background, #background, body{  
background:#DFA1A9 }
```

If only the background color should be changed can be used:

```
.background{ background-color:#DFA1A9 }
```

This example shows the color as background, it is applied via the CSS property "background".

To optimize and compress your CSS code, you can use our [online CSS compressor and optimizer](#) based on csstidy. If you want to create a linear or radial gradient as background or border, check our [CSS Gradient Generator](#).



Hey! You found this booklet interesting? Support Converting Colors with the new Membership Option!

The pro membership hides all ads, plus gives you double the colors in the color bucket, and more awesome pro features!

**[Learn more, Memberships starting at \\$2.50/m!](#)**

**Follow me  
on Twitter!**

@ConvertingColor