

# Converting Colors

Decimal(14657196)

Have a look what the booklet for  
Decimal(14657196) contains.

<b>Decimal(14657196)</b> .....	3
<i><b>Conversions</b></i> .....	4
<i><b>Details</b></i> .....	6
<i><b>Harmonies</b></i> .....	11
<i><b>Previews</b></i> .....	23
<i><b>Color Blindness Simulation</b></i> .....	26
<i><b>CSS Examples</b></i> .....	29

# **Color**

**Decimal(14657196)**

# Conversions

## Conversions Part 1

<b>Format</b>	<b>Color</b>
Hex	DFA6AC
RGB	223, 166, 172
RGB Percent	87%, 65%, 67%
CMY	0.1255, 0.3490, 0.3255
CMYK	0.00, 0.26, 0.23, 0.13
HSL	354°, 47%, 76%
HSV	354°, 26%, 87%
XYZ	51.5140, 45.9390, 45.1817
YIQ	183.7270, 32.0460, 13.9500

# Conversions

## Conversions Part 2

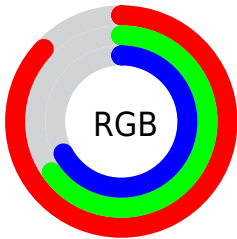
Format	Color
R <sub>Y</sub> B	223, 166, 172
Decimal	14657196
CIE Lab	73.51, 21.86, 5.14
CIE LCh	74, 22.457, 13.244
Yxy	45.9390, 0.3612, 0.3221
Android (android.graphics.Color)	4292847276 (0xFFDFA6AC)
YUV	183.7270, -5.7814, 34.4424
Hunter-Lab	67.7783, 17.0547, 7.9214

# Details

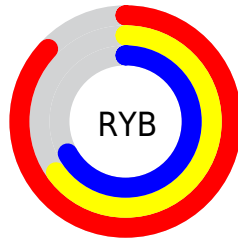
The Decimal color **14657196** is a light color, and the websafe version is hex **CC9999**. A complement of this color would be **10936281**, and the grayscale version is **12105912**.

A 20% lighter version of the original color is **16768483**, and **10973816** is the 20% darker color. If you saturate the color by 10%, you get **14651544**, and if you desaturate by 10%, it is **14662848**.

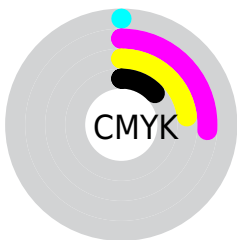
# Distribution



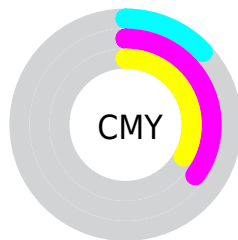
- Red (87%)
- Green (65%)
- Blue (67%)



- Red (87%)
- Yellow (65%)
- Blue (67%)



- Cyan (0%)
- Magenta (26%)
- Yellow (23%)
- Black (13%)



- Cyan (13%)
- Magenta (35%)
- Yellow (33%)

# Brightness & Saturation Gradients

These gradients show how the Decimal color 14657196 changes by changing the brightness by 10 percent. The first figure shows a shift by +10% for each color and the second figure -10%.

Similar to the brightness gradients but the following saturation gradients show a change of the Decimal color 14657196 by changing the saturation by 10% instead.



 14657196

 14657196

16777215

 12815249

 16768483

 10973816

 16775935

 9197919

 7422279

 5777969

 4133916

 2752513

 0

 14657196

 14657196

 14651544

 14662848

 14645636

 14668756

 14639984

 14674408

 14634332

 14680060

 14628680

 14680063

 14622772

 14617120

 14614551

# Harmonies

## Analogous

The Analogous color harmony consists of three colors that are next to each other on the color wheel.



14133185



14657196



14461337

# Triad

The Triadic color harmony groups three colors that are evenly spaced from another and form a triangle on the color wheel.



14657196



10730646



9353947

# Complementary

The Complementary color scheme is a pair of colors which are on the opposite of each other on the color wheel.



14657196



10936281

# Split Complementary

Split-complementary colors differ from the complementary color scheme. The scheme consists of three colors, the original color and two neighbors of the complement color.



8240848



14657196



9289640

# Square

The Square scheme is like the rectangle color scheme, but the four colors are evenly spaced on the color wheel.



14657196



12301964



8241341



11121628

# Rectangle

The Rectangle color scheme consists of four colors that form a rectangle on the color wheel.



14657196



13938064



8241341



8895705

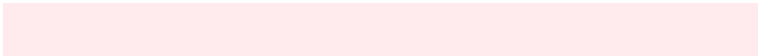


# Sweetspot

The Sweet Spot groups the original color and five complimentary colors.



14657196



16772077



14198495



8418164



0



8421504



# Same Dimension

The Same Dimension uses a secret algorithm to generate beautiful new colors.



14657196



16756920



14662822



7365990



11534355



3145733



# Inverse Universe

The Inverse Universe completely reimagines the original color for something new.



14657196



16756920



10930655



7365990



11534355

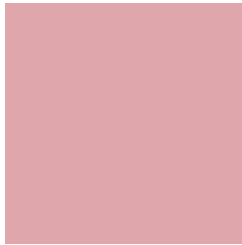


3145733



# Previews

## White Background



This preview shows how the Decimal color 14657196 looks on a white background.

## Color Contrast Check

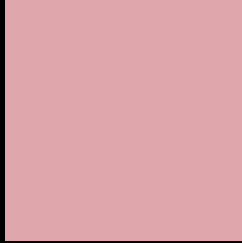
Large Text (above 18pt) WCAG AA × Fail

Any Text WCAG AA × Fail

Large Text (above 18pt) WCAG AAA × Fail

Any Text WCAG AAA × Fail

# Black Background



This preview shows how the Decimal color 14657196 looks on a black background.

## Color Contrast Check

Large Text (above 18pt) WCAG AA ✓ Pass

Any Text WCAG AA ✓ Pass

Large Text (above 18pt) WCAG AAA ✓ Pass

Any Text WCAG AAA ✓ Pass

If you want to check with other color combinations, try the [Color Contrast Checker](#).



## Decimal 14657196 Background



This preview shows how black text looks on a background with the Decimal color 14657196.



This preview shows how white text looks on a background with the Decimal color 14657196.

# Color Blindness Simulation

Color vision deficiency is a very complex topic, and I could not describe the different causes any better than Wikipedia does, so if you want to learn more, you should check out their [article about color blindness](#).

## Dichromacy



**Original Color**  
14657196

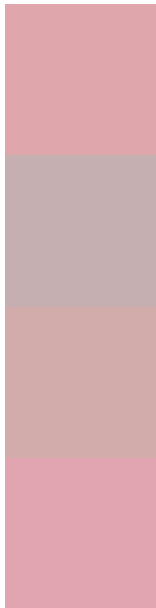
**Protanopia**  
12104884

**Deuteranopia**  
13283242



**Tritanopia**  
14722482

# Trichromacy



**Original Color**  
14657196

**Protanomaly**  
13021105

**Deuteranomaly**  
13806763

**Tritanomaly**  
14722480

# Monochromacy



**Original Color**  
14657196

**Achromatopsia**  
12105912

**Achromatomaly**  
13021620

# CSS Examples

## Text

The CSS property to change the color of the text to Decimal 14657196 is called "color". The color property can be set on classes, ids or directly on the HTML element.

This example shows how text in the color #DFA6AC looks like.

```
.text, #text, p{  
    color:#DFA6AC  
}
```

If you want to add a text shadow in that color use the text-shadow property, you can generate a text shadow directly with our [CSS Text Shadow Generator](#).

Here you see how black text with a 4 pixel #DFA6AC colored shadow looks like.

```
.shadow{ text-shadow: 4px 4px 2px #DFA6AC
}
```

## Border

The CSS property to change the border of an element to Decimal 14657196 is called "border". The border property can be set on classes, ids or directly on the HTML element.

This example shows the color as border, it can be applied via the CSS property "border" or "border-color".

```
.border, #border, table{ border:4px solid
#DFA6AC }
```

If only the border color should be changed use the property `border-color`.

```
.border{ border-color:#DFA6AC }
```

If you want to add a box shadow in that color use:

Here you see how a box with a 4 pixel #DFA6AC colored shadow looks like.

```
.boxshadow{ -moz-box-shadow:4px 4px 4px  
4px #DFA6AC; -webkit-box-shadow:4px 4px  
4px 4px #DFA6AC; box-shadow:4px 4px 4px  
4px #DFA6AC }
```

# Background

The CSS property to change the background color of an element to Decimal 14657196 is called "background". The background property can be set on classes, ids or directly on the HTML element.

```
.background, #background, body{  
background:#DFA6AC }
```

If only the background color should be changed can be used:

```
.background{ background-color:#DFA6AC }
```

This example shows the color as background, it is applied via the CSS property "background".

To optimize and compress your CSS code, you can use our [online CSS compressor and optimizer](#) based on csstidy. If you want to create a linear or radial gradient as background or border, check our [CSS Gradient Generator](#).



Hey! You found this booklet interesting? Support Converting Colors with the new Membership Option!

The pro membership hides all ads, plus gives you double the colors in the color bucket, and more awesome pro features!

**[Learn more, Memberships starting at \\$2.50/m!](#)**

**Follow me  
on Twitter!**

@ConvertingColor