

# Converting Colors

Decimal(14658233)

Have a look what the booklet for  
Decimal(14658233) contains.

<b>Decimal(14658233)</b> .....	3
<i><b>Conversions</b></i> .....	4
<i><b>Details</b></i> .....	6
<i><b>Harmonies</b></i> .....	11
<i><b>Previews</b></i> .....	23
<i><b>Color Blindness Simulation</b></i> .....	26
<i><b>CSS Examples</b></i> .....	29

# **Color**

**Decimal(14658233)**

# Conversions

## Conversions Part 1

Format	Color
Hex	DFAAB9
RGB	223, 170, 185
RGB Percent	87%, 67%, 73%
CMY	0.1255, 0.3333, 0.2745
CMYK	0.00, 0.24, 0.17, 0.13
HSL	343°, 45%, 77%
HSV	343°, 24%, 87%
XYZ	53.5631, 47.9402, 52.3292
YIQ	187.5570, 26.7730, 15.9010

# Conversions

## Conversions Part 2

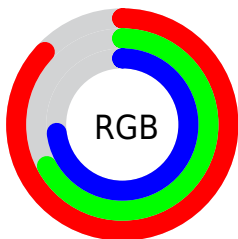
Format	Color
R <sub>Y</sub> B	223, 170, 185
Decimal	14658233
CIE Lab	74.79, 21.67, -0.13
CIE LCh	75, 21.672, 359.655
Yxy	47.9402, 0.3482, 0.3116
Android (android.graphics.Color)	4292848313 (0xFFDFAAB9)
YUV	187.5570, -1.2606, 31.0835
Hunter-Lab	69.2389, 16.9194, 3.6571

# Details

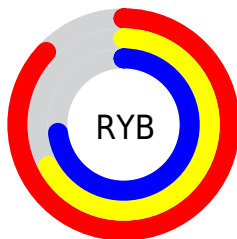
The Decimal color **14658233** is a light color, and the websafe version is hex **CC9999**. A complement of this color would be **11198416**, and the grayscale version is **12369084**.

A 20% lighter version of the original color is **16769777**, and **10974596** is the 20% darker color. If you saturate the color by 10%, you get **14652585**, and if you desaturate by 10%, it is **14663881**.

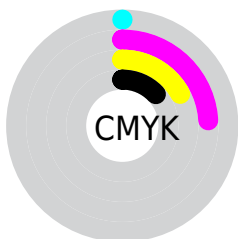
# Distribution



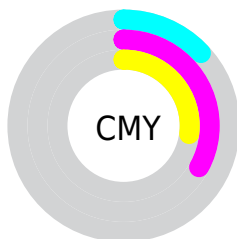
- Red (87%)
- Green (67%)
- Blue (73%)



- Red (87%)
- Yellow (67%)
- Blue (73%)



- Cyan (0%)
- Magenta (24%)
- Yellow (17%)
- Black (13%)



- Cyan (13%)
- Magenta (33%)
- Yellow (27%)

# Brightness & Saturation Gradients

These gradients show how the Decimal color 14658233 changes by changing the brightness by 10 percent. The first figure shows a shift by +10% for each color and the second figure -10%.

Similar to the brightness gradients but the following saturation gradients show a change of the Decimal color 14658233 by changing the saturation by 10% instead.



 14658233

 14658233

16777215

 12816286

 16769777

 10974596

16776959

 9198955

 7488595

 5844540

 4200230

 2752529

 0

 14658233

 14658233

 14652585

 14663881

 14646681

 14669785

 14641033

 14675433

 14635385

 14680057

 14629737

 14680063

 14623833

 14618185

 14614591

# Harmonies

## Analogous

The Analogous color harmony consists of three colors that are next to each other on the color wheel.



13807053



14658233



14789541

# Triad

The Triadic color harmony groups three colors that are evenly spaced from another and form a triangle on the color wheel.



14658233



11713941



9093338

# Complementary

The Complementary color scheme is a pair of colors which are on the opposite of each other on the color wheel.



14658233



11198416

# Split Complementary

Split-complementary colors differ from the complementary color scheme. The scheme consists of three colors, the original color and two neighbors of the complement color.



8504267



14658233



10207651

# Square

The Square scheme is like the rectangle color scheme, but the four colors are evenly spaced on the color wheel.



14658233



13154192



8962999



10599136

# Rectangle

The Rectangle color scheme consists of four colors that form a rectangle on the color wheel.



14658233



14462618



8962999



8765910



# Sweetspot

The Sweet Spot groups the original color and five complimentary colors.



14658233



16772594



13675231



8418680



0



8421504



# Same Dimension

The Same Dimension uses a secret algorithm to generate beautiful new colors.



14658233



16758218



14661034



7365992



11534386



3145742



# Inverse Universe

The Inverse Universe completely reimagines the original color for something new.



14658233



16758218



11195615



7365992



11534386



3145742



# Previews

## White Background



This preview shows how the Decimal color 14658233 looks on a white background.

## Color Contrast Check

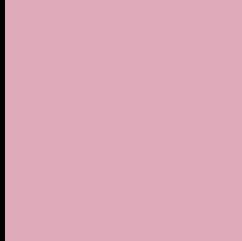
Large Text (above 18pt) WCAG AA × Fail

Any Text WCAG AA × Fail

Large Text (above 18pt) WCAG AAA × Fail

Any Text WCAG AAA × Fail

# Black Background



This preview shows how the Decimal color 14658233 looks on a black background.

## Color Contrast Check

Large Text (above 18pt) WCAG AA ✓ Pass

Any Text WCAG AA ✓ Pass

Large Text (above 18pt) WCAG AAA ✓ Pass

Any Text WCAG AAA ✓ Pass

If you want to check with other color combinations, try the [Color Contrast Checker](#).



## Decimal 14658233 Background



This preview shows how black text looks on a background with the Decimal color 14658233.



This preview shows how white text looks on a background with the Decimal color 14658233.

# Color Blindness Simulation

Color vision deficiency is a very complex topic, and I could not describe the different causes any better than Wikipedia does, so if you want to learn more, you should check out their [article about color blindness](#).


## Dichromacy



**Original Color**  
14658233

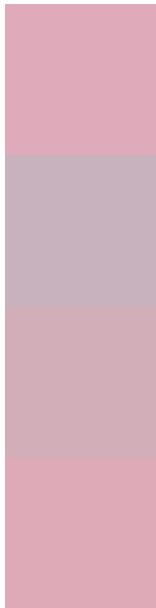
**Protanopia**  
12171201

**Deuteranopia**  
13284023



**Tritanopia**  
14658231

# Trichromacy



**Original Color**  
14658233

**Protanomaly**  
13087422

**Deuteranomaly**  
13807544

**Tritanomaly**  
14658232

# Monochromacy



**Original Color**  
14658233

**Achromatopsia**  
12369084

**Achromatomaly**  
13219259

# CSS Examples

## Text

The CSS property to change the color of the text to Decimal 14658233 is called "color". The color property can be set on classes, ids or directly on the HTML element.

This example shows how text in the color #DFAAB9 looks like.

```
.text, #text, p{  
    color:#DFAAB9  
}
```

If you want to add a text shadow in that color use the text-shadow property, you can generate a text shadow directly with our [CSS Text Shadow Generator](#).

Here you see how black text with a 4 pixel #DFAAB9 colored shadow looks like.

```
.shadow{ text-shadow: 4px 4px 2px #DFAAB9
}
```

## Border

The CSS property to change the border of an element to Decimal 14658233 is called "border". The border property can be set on classes, ids or directly on the HTML element.

This example shows the color as border, it can be applied via the CSS property "border" or "border-color".

```
.border, #border, table{ border:4px solid
#DFAAB9 }
```

If only the border color should be changed use the property `border-color`.

```
.border{ border-color:#DFAAB9 }
```

If you want to add a box shadow in that color use:

Here you see how a box with a 4 pixel #DFAAB9 colored shadow looks like.

```
.boxshadow{ -moz-box-shadow:4px 4px 4px  
4px #DFAAB9; -webkit-box-shadow:4px 4px  
4px 4px #DFAAB9; box-shadow:4px 4px 4px  
4px #DFAAB9 }
```

# Background

The CSS property to change the background color of an element to Decimal 14658233 is called "background". The background property can be set on classes, ids or directly on the HTML element.

```
.background, #background, body{  
background:#DFAAB9 }
```

If only the background color should be changed can be used:

```
.background{ background-color:#DFAAB9 }
```

This example shows the color as background, it is applied via the CSS property "background".

To optimize and compress your CSS code, you can use our [online CSS compressor and optimizer](#) based on csstidy. If you want to create a linear or radial gradient as background or border, check our [CSS Gradient Generator](#).



Hey! You found this booklet interesting? Support Converting Colors with the new Membership Option!

The pro membership hides all ads, plus gives you double the colors in the color bucket, and more awesome pro features!

**[Learn more, Memberships starting at \\$2.50/m!](#)**

**Follow me  
on Twitter!**

@ConvertingColor