

Converting Colors

Decimal(14659748)

Have a look what the booklet for
Decimal(14659748) contains.

Decimal(14659748)	3
<i>Conversions</i>	4
<i>Details</i>	6
<i>Harmonies</i>	11
<i>Previews</i>	23
<i>Color Blindness Simulation</i>	26
<i>CSS Examples</i>	29

Color

Decimal(14659748)

Conversions

Conversions Part 1

Format	Color
Hex	DFB0A4
RGB	223, 176, 164
RGB Percent	87%, 69%, 64%
CMY	0.1255, 0.3098, 0.3569
CMYK	0.00, 0.21, 0.26, 0.13
HSL	12°, 48%, 76%
HSV	12°, 26%, 87%
XYZ	52.6576, 49.4190, 41.8854
YIQ	188.6850, 31.8640, 6.2320

Conversions

Conversions Part 2

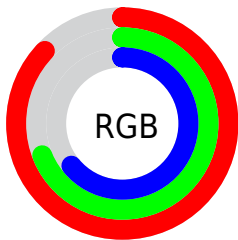
Format	Color
RYB	223, 179, 164
Decimal	14659748
CIELab	75.71, 15.35, 12.67
CIELCh	76, 19.900, 39.533
Yxy	49.4190, 0.3658, 0.3433
Android (android.graphics.Color)	4292849828 (0xFFDFB0A4)
YUV	188.6850, -12.1697, 30.0943
Hunter-Lab	70.2986, 10.6839, 13.8828

Details

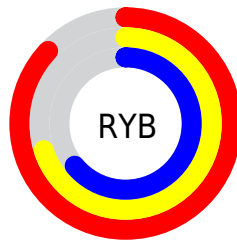
The Decimal color **14659748** is a light color, and the websafe version is hex **CC9999**. A complement of this color would be **10802143**, and the grayscale version is **12434877**.

A 20% lighter version of the original color is **16771291**, and **10976112** is the 20% darker color. If you saturate the color by 10%, you get **14655118**, and if you desaturate by 10%, it is **14664378**.

Distribution



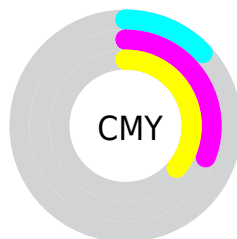
- Red (87%)
- Green (69%)
- Blue (64%)



- Red (87%)
- Yellow (70%)
- Blue (64%)



- Cyan (0%)
- Magenta (21%)
- Yellow (26%)
- Black (13%)



- Cyan (13%)
- Magenta (31%)
- Yellow (36%)

Brightness & Saturation Gradients

These gradients show how the Decimal color 14659748 changes by changing the brightness by 10 percent. The first figure shows a shift by +10% for each color and the second figure -10%.

Similar to the brightness gradients but the following saturation gradients show a change of the Decimal color 14659748 by changing the saturation by 10% instead.

 14659748

 14659748

16777215

 12817802

 16771291

 10976112

 16777207

 9200216

 7424576

 5780266

 4136470

 2689024

 0

 14659748

 14659748

 14655118

 14664378

 14650487

 14669009

 14646113

 14673383

 14641483

 14678013

 14636853

 14680063

 14632222

 14627848

 14626048

Harmonies

Analogous

The Analogous color harmony consists of three colors that are next to each other on the color wheel.



14724789



14659748



13940121

Triad

The Triadic color harmony groups three colors that are evenly spaced from another and form a triangle on the color wheel.



14659748



10142893



11385566

Complementary

The Complementary color scheme is a pair of colors which are on the opposite of each other on the color wheel.



14659748



10802143

Split Complementary

Split-complementary colors differ from the complementary color scheme. The scheme consists of three colors, the original color and two neighbors of the complement color.



9945308



14659748



9225664

Square

The Square scheme is like the rectangle color scheme, but the four colors are evenly spaced on the color wheel.



14659748



11452830



9094353



12956887

Rectangle

The Rectangle color scheme consists of four colors that form a rectangle on the color wheel.



14659748



13220246



9094353



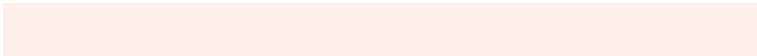
10861791

Sweetspot

The Sweet Spot groups the original color and five complimentary colors.



14659748



16773099



14656723



8418675



0



8421504

Same Dimension

The Same Dimension uses a secret algorithm to generate beautiful new colors.



14659748



16760493



14667172



7366501



11543552



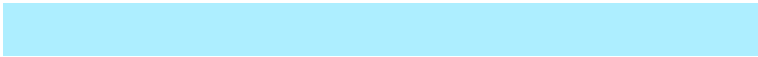
3148288

Inverse Universe

The Inverse Universe completely reimagines the original color for something new.



10802143



11398911



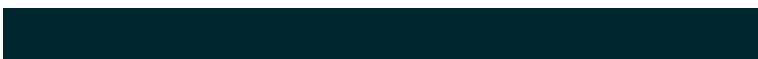
10794719



6647408



36016



10032

Previews

White Background



This preview shows how the Decimal color 14659748 looks on a white background.

Color Contrast Check

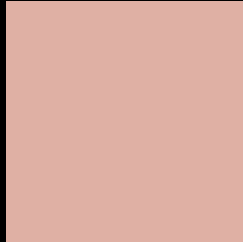
Large Text (above 18pt) WCAG AA × Fail

Any Text WCAG AA × Fail

Large Text (above 18pt) WCAG AAA × Fail

Any Text WCAG AAA × Fail

Black Background



This preview shows how the Decimal color 14659748 looks on a black background.

Color Contrast Check

Large Text (above 18pt) WCAG AA ✓ Pass

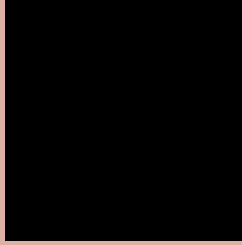
Any Text WCAG AA ✓ Pass

Large Text (above 18pt) WCAG AAA ✓ Pass

Any Text WCAG AAA ✓ Pass

If you want to check with other color combinations, try the [Color Contrast Checker](#).

Decimal 14659748 Background



This preview shows how black text looks on a background with the Decimal color 14659748.



This preview shows how white text looks on a background with the Decimal color 14659748.

Color Blindness Simulation

Color vision deficiency is a very complex topic, and I could not describe the different causes any better than Wikipedia does, so if you want to learn more, you should check out their [article about color blindness](#).

Dichromacy



Original Color
14659748

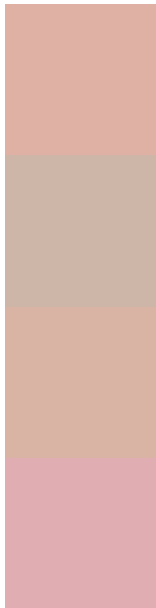
Protanopia
12761769

Deuteranopia
14005411



Tritanopia
14790074

Trichromacy



Original Color
14659748

Protanomaly
13481639

Deuteranomaly
14267299

Tritanomaly
14724786

Monochromacy



Original Color
14659748

Achromatopsia
12434877

Achromatomaly
13220020

CSS Examples

Text

The CSS property to change the color of the text to Decimal 14659748 is called "color". The color property can be set on classes, ids or directly on the HTML element.

This example shows how text in the color #DFB0A4 looks like.

```
.text, #text, p{  
    color:#DFB0A4  
}
```

If you want to add a text shadow in that color use the text-shadow property, you can generate a text shadow directly with our [CSS Text Shadow Generator](#).

Here you see how black text with a 4 pixel #DFB0A4 colored shadow looks like.

```
.shadow{ text-shadow: 4px 4px 2px #DFB0A4
}
```

Border

The CSS property to change the border of an element to Decimal 14659748 is called "border". The border property can be set on classes, ids or directly on the HTML element.

This example shows the color as border, it can be applied via the CSS property "border" or "border-color".

```
.border, #border, table{ border:4px solid
#DFB0A4 }
```

If only the border color should be changed use the property `border-color`.

```
.border{ border-color:#DFB0A4 }
```

If you want to add a box shadow in that color use:

Here you see how a box with a 4 pixel #DFB0A4 colored shadow looks like.

```
.boxshadow{ -moz-box-shadow:4px 4px 4px  
4px #DFB0A4; -webkit-box-shadow:4px 4px  
4px 4px #DFB0A4; box-shadow:4px 4px 4px  
4px #DFB0A4 }
```

Background

The CSS property to change the background color of an element to Decimal 14659748 is called "background". The background property can be set on classes, ids or directly on the HTML element.

```
.background, #background, body{  
background:#DFB0A4 }
```

If only the background color should be changed can be used:

```
.background{ background-color:#DFB0A4 }
```

This example shows the color as background, it is applied via the CSS property "background".

To optimize and compress your CSS code, you can use our [online CSS compressor and optimizer](#) based on csstidy. If you want to create a linear or radial gradient as background or border, check our [CSS Gradient Generator](#).

Hey! You found this booklet interesting? Support Converting Colors with the new Membership Option!

The pro membership hides all ads, plus gives you double the colors in the color bucket, and more awesome pro features!

[Learn more, Memberships starting at \\$2.50/m!](#)

**Follow me
on Twitter!**

@ConvertingColor