

Converting Colors

Decimal(14660536)

Have a look what the booklet for
Decimal(14660536) contains.

Decimal(14660536)	3
<i>Conversions</i>	4
<i>Details</i>	6
<i>Harmonies</i>	11
<i>Previews</i>	23
<i>Color Blindness Simulation</i>	26
<i>CSS Examples</i>	29

Color

Decimal(14660536)

Conversions

Conversions Part 1

Format	Color
Hex	DFB3B8
RGB	223, 179, 184
RGB Percent	87%, 70%, 72%
CMY	0.1255, 0.2980, 0.2784
CMYK	0.00, 0.20, 0.17, 0.13
HSL	353°, 41%, 79%
HSV	353°, 20%, 87%
XYZ	55.2033, 51.3889, 52.3569
YIQ	192.7260, 24.6190, 10.8830

Conversions

Conversions Part 2

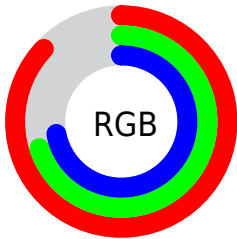
Format	Color
RYB	223, 179, 184
Decimal	14660536
CIELab	76.91, 16.68, 3.51
CIELCh	77, 17.043, 11.881
Yxy	51.3889, 0.3473, 0.3233
Android (android.graphics.Color)	4292850616 (0xFFDFB3B8)
YUV	192.7260, -4.3019, 26.5503
Hunter-Lab	71.6860, 12.0069, 6.8769

Details

The Decimal color **14660536** is a light color, and the websafe version is hex **CC9999**. A complement of this color would be **11788250**, and the grayscale version is **12698049**.

A 20% lighter version of the original color is **16772080**, and **10976899** is the 20% darker color. If you saturate the color by 10%, you get **14654884**, and if you desaturate by 10%, it is **14666188**.

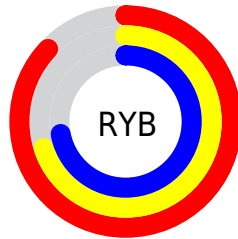
Distribution



Red (87%)

Green (70%)

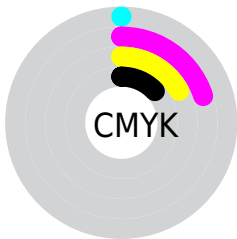
Blue (72%)



Red (87%)

Yellow (70%)

Blue (72%)

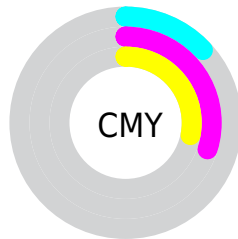


Cyan (0%)

Magenta (20%)

Yellow (17%)

Black (13%)



Cyan (13%)

Magenta (30%)

Yellow (28%)

Brightness & Saturation Gradients

These gradients show how the Decimal color 14660536 changes by changing the brightness by 10 percent. The first figure shows a shift by +10% for each color and the second figure -10%.

Similar to the brightness gradients but the following saturation gradients show a change of the Decimal color 14660536 by changing the saturation by 10% instead.

 14660536

 14660536

16777215

 12818589

 16772080

 10976899

 9201002

 7490898

 5846587

 4268069

 2755344

 589824

 0

 14660536

 14660536

 14654884

 14666188

 14648976

 14672096

 14643325

 14677747

 14637673

 14680063

 14631765

 14626113

 14620462

 14614810

 14614553

Harmonies

Analogous

The Analogous color harmony consists of three colors that are next to each other on the color wheel.



14202056



14660536



14529961

Triad

The Triadic color harmony groups three colors that are evenly spaced from another and form a triangle on the color wheel.



14660536



11715494



10601179

Complementary

The Complementary color scheme is a pair of colors which are on the opposite of each other on the color wheel.



14660536



11788250

Split Complementary

Split-complementary colors differ from the complementary color scheme. The scheme consists of three colors, the original color and two neighbors of the complement color.



9881298



14660536



10602164

Square

The Square scheme is like the rectangle color scheme, but the four colors are evenly spaced on the color wheel.



14660536



12894111



9881540



11910620

Rectangle

The Rectangle color scheme consists of four colors that form a rectangle on the color wheel.



14660536



14137507



9881540



10274009

Sweetspot

The Sweet Spot groups the original color and five complimentary colors.



14660536



16773361



14332895



8419192



0



8421504

Same Dimension

The Same Dimension uses a secret algorithm to generate beautiful new colors.



14660536



16761545



14664883



7365990



11534356



3145734

Inverse Universe

The Inverse Universe completely reimagines the original color for something new.



14660536



16761545



11783903



7365990



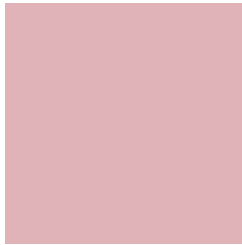
11534356



3145734

Previews

White Background



This preview shows how the Decimal color 14660536 looks on a white background.

Color Contrast Check

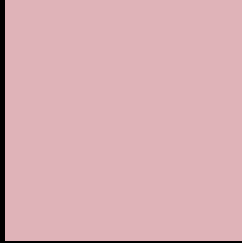
Large Text (above 18pt) WCAG AA × Fail

Any Text WCAG AA × Fail

Large Text (above 18pt) WCAG AAA × Fail

Any Text WCAG AAA × Fail

Black Background



This preview shows how the Decimal color 14660536 looks on a black background.

Color Contrast Check

Large Text (above 18pt) WCAG AA ✓ Pass

Any Text WCAG AA ✓ Pass

Large Text (above 18pt) WCAG AAA ✓ Pass

Any Text WCAG AAA ✓ Pass

If you want to check with other color combinations, try the [Color Contrast Checker](#).

Decimal 14660536 Background



This preview shows how black text looks on a background with the Decimal color 14660536.



This preview shows how white text looks on a background with the Decimal color 14660536.

Color Blindness Simulation

Color vision deficiency is a very complex topic, and I could not describe the different causes any better than Wikipedia does, so if you want to learn more, you should check out their [article about color blindness](#).

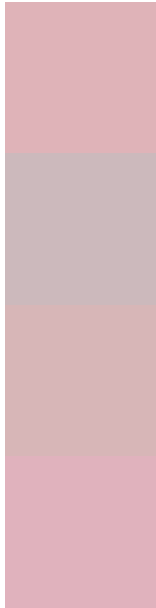
Dichromacy





Tritanopia
14725824

Trichromacy



Original Color
14660536

Protanomaly
13416892

Deuteranomaly
14137015

Tritanomaly
14725821

Monochromacy



Original Color
14660536

Achromatopsia
12698049

Achromatomaly
13417662

CSS Examples

Text

The CSS property to change the color of the text to Decimal 14660536 is called "color". The color property can be set on classes, ids or directly on the HTML element.

This example shows how text in the color #DFB3B8 looks like.

```
.text, #text, p{  
  color:#DFB3B8  
}
```

If you want to add a text shadow in that color use the text-shadow property, you can generate a text shadow directly with our [CSS Text Shadow Generator](#).

Here you see how black text with a 4 pixel #DFB3B8 colored shadow looks like.

```
.shadow{ text-shadow: 4px 4px 2px #DFB3B8
}
```

Border

The CSS property to change the border of an element to Decimal 14660536 is called "border". The border property can be set on classes, ids or directly on the HTML element.

This example shows the color as border, it can be applied via the CSS property "border" or "border-color".

```
.border, #border, table{ border:4px solid
#DFB3B8 }
```

If only the border color should be changed use the property `border-color`.

```
.border{ border-color:#DFB3B8 }
```

If you want to add a box shadow in that color use:

Here you see how a box with a 4 pixel #DFB3B8 colored shadow looks like.

```
.boxshadow{ -moz-box-shadow:4px 4px 4px  
4px #DFB3B8; -webkit-box-shadow:4px 4px  
4px 4px #DFB3B8; box-shadow:4px 4px 4px  
4px #DFB3B8 }
```

Background

The CSS property to change the background color of an element to Decimal 14660536 is called "background". The background property can be set on classes, ids or directly on the HTML element.

```
.background, #background, body{  
background:#DFB3B8 }
```

If only the background color should be changed can be used:

```
.background{ background-color:#DFB3B8 }
```

This example shows the color as background, it is applied via the CSS property "background".

To optimize and compress your CSS code, you can use our [online CSS compressor and optimizer](#) based on csstidy. If you want to create a linear or radial gradient as background or border, check our [CSS Gradient Generator](#).

Hey! You found this booklet interesting? Support Converting Colors with the new Membership Option!

The pro membership hides all ads, plus gives you double the colors in the color bucket, and more awesome pro features!

[Learn more, Memberships starting at \\$2.50/m!](#)

**Follow me
on Twitter!**

@ConvertingColor