

Converting Colors

Decimal(14661281)

Have a look what the booklet for
Decimal(14661281) contains.

Decimal(14661281)	3
<i>Conversions</i>	4
<i>Details</i>	6
<i>Harmonies</i>	11
<i>Previews</i>	23
<i>Color Blindness Simulation</i>	26
<i>CSS Examples</i>	29

Color

Decimal(14661281)

Conversions

Conversions Part 1

Format	Color
Hex	DFB6A1
RGB	223, 182, 161
RGB Percent	87%, 71%, 63%
CMY	0.1255, 0.2863, 0.3686
CMYK	0.00, 0.18, 0.28, 0.13
HSL	20°, 49%, 75%
HSV	20°, 28%, 87%
XYZ	53.5924, 51.7171, 40.8760
YIQ	191.8650, 31.1770, 2.1610

Conversions

Conversions Part 2

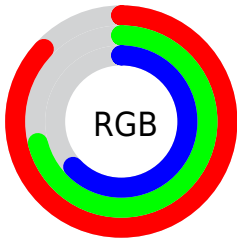
Format	Color
R_{YB}	223, 193, 161
Decimal	14661281
CIE Lab	77.11, 11.73, 16.26
CIE LCh	77, 20.048, 54.194
Yxy	51.7171, 0.3666, 0.3538
Android (android.graphics.Color)	4292851361 (0xFFDFB6A1)
YUV	191.8650, -15.2164, 27.3054
Hunter-Lab	71.9146, 7.1718, 16.6400

Details

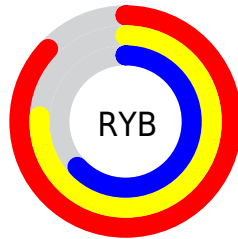
The Decimal color **14661281** is a light color, and the websafe version is hex **FFCCCC**. A complement of this color would be **10603231**, and the grayscale version is **12632256**.

A 20% lighter version of the original color is **16772824**, and **10977645** is the 20% darker color. If you saturate the color by 10%, you get **14657419**, and if you desaturate by 10%, it is **14665143**.

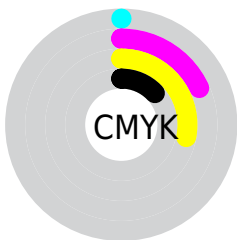
Distribution



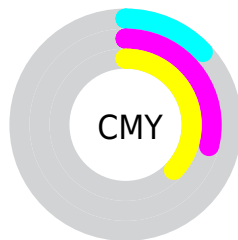
- Red (87%)
- Green (71%)
- Blue (63%)



- Red (87%)
- Yellow (76%)
- Blue (63%)



- Cyan (0%)
- Magenta (18%)
- Yellow (28%)
- Black (13%)



- Cyan (13%)
- Magenta (29%)
- Yellow (37%)

Brightness & Saturation Gradients

These gradients show how the Decimal color 14661281 changes by changing the brightness by 10 percent. The first figure shows a shift by +10% for each color and the second figure -10%.

Similar to the brightness gradients but the following saturation gradients show a change of the Decimal color 14661281 by changing the saturation by 10% instead.

 14661281

 14661281

16777215

 12819335

 16772824

 10977645

 16777204

 9201749

 7491646

 5781800

 4137747

 2690816

 0

 14661281

 14661281

 14657419

 14665143

 14653812

 14668750

 14649950

 14672612

 14646088

 14676474

 14642225

 14680063

 14638619

 14634757

 14633984

Harmonies

Analogous

The Analogous color harmony consists of three colors that are next to each other on the color wheel.



15053488



14661281



13679770

Triad

The Triadic color harmony groups three colors that are evenly spaced from another and form a triangle on the color wheel.



14661281



9816506



12434400

Complementary

The Complementary color scheme is a pair of colors which are on the opposite of each other on the color wheel.



14661281



10603231

Split Complementary

Split-complementary colors differ from the complementary color scheme. The scheme consists of three colors, the original color and two neighbors of the complement color.



10863075



14661281



9226701

Square

The Square scheme is like the rectangle color scheme, but the four colors are evenly spaced on the color wheel.



14661281



10995624



9619164



13874644

Rectangle

The Rectangle color scheme consists of four colors that form a rectangle on the color wheel.



14661281



12894362



9619164



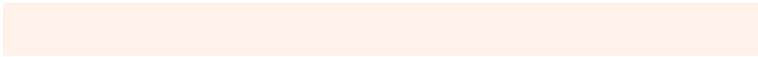
11910626

Sweetspot

The Sweet Spot groups the original color and five complimentary colors.



14661281



16773867



14655946



8419187



0



8421504

Same Dimension

The Same Dimension uses a secret algorithm to generate beautiful new colors.



14661281



16762795



14669217



7367013



11549696



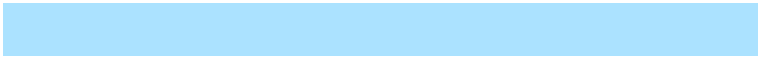
3149824

Inverse Universe

The Inverse Universe completely reimagines the original color for something new.



10603231



11264767



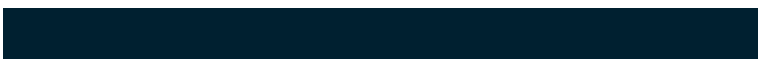
10595295



6646896



29872



8240

Previews

White Background



This preview shows how the Decimal color 14661281 looks on a white background.

Color Contrast Check

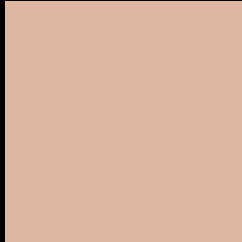
Large Text (above 18pt) WCAG AA × Fail

Any Text WCAG AA × Fail

Large Text (above 18pt) WCAG AAA × Fail

Any Text WCAG AAA × Fail

Black Background



This preview shows how the Decimal color 14661281 looks on a black background.

Color Contrast Check

Large Text (above 18pt) WCAG AA ✓ Pass

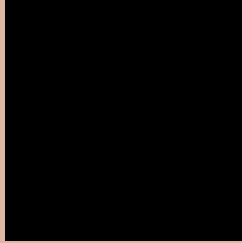
Any Text WCAG AA ✓ Pass

Large Text (above 18pt) WCAG AAA ✓ Pass

Any Text WCAG AAA ✓ Pass

If you want to check with other color combinations, try the [Color Contrast Checker](#).

Decimal 14661281 Background



This preview shows how black text looks on a background with the Decimal color 14661281.




This preview shows how white text looks on a background with the Decimal color 14661281.

Color Blindness Simulation

Color vision deficiency is a very complex topic, and I could not describe the different causes any better than Wikipedia does, so if you want to learn more, you should check out their [article about color blindness](#).

Dichromacy





Tritanopia
14856895

Trichromacy



Original Color
14661281

Protanomaly
13679524

Deuteranomaly
14530465

Tritanomaly
14791604

Monochromacy



Original Color
14661281

Achromatopsia
12632256

Achromatomaly
13352117

CSS Examples

Text

The CSS property to change the color of the text to Decimal 14661281 is called "color". The color property can be set on classes, ids or directly on the HTML element.

This example shows how text in the color #DFB6A1 looks like.

```
.text, #text, p{  
    color:#DFB6A1  
}
```

If you want to add a text shadow in that color use the text-shadow property, you can generate a text shadow directly with our [CSS Text Shadow Generator](#).

Here you see how black text with a 4 pixel #DFB6A1 colored shadow looks like.

```
.shadow{ text-shadow: 4px 4px 2px #DFB6A1
}
```

Border

The CSS property to change the border of an element to Decimal 14661281 is called "border". The border property can be set on classes, ids or directly on the HTML element.

This example shows the color as border, it can be applied via the CSS property "border" or "border-color".

```
.border, #border, table{ border:4px solid
#DFB6A1 }
```

If only the border color should be changed use the property `border-color`.

```
.border{ border-color:#DFB6A1 }
```

If you want to add a box shadow in that color use:

Here you see how a box with a 4 pixel #DFB6A1 colored shadow looks like.

```
.boxshadow{ -moz-box-shadow:4px 4px 4px  
4px #DFB6A1; -webkit-box-shadow:4px 4px  
4px 4px #DFB6A1; box-shadow:4px 4px 4px  
4px #DFB6A1 }
```

Background

The CSS property to change the background color of an element to Decimal 14661281 is called "background". The background property can be set on classes, ids or directly on the HTML element.

```
.background, #background, body{  
background:#DFB6A1 }
```

If only the background color should be changed can be used:

```
.background{ background-color:#DFB6A1 }
```

This example shows the color as background, it is applied via the CSS property "background".

To optimize and compress your CSS code, you can use our [online CSS compressor and optimizer](#) based on csstidy. If you want to create a linear or radial gradient as background or border, check our [CSS Gradient Generator](#).

Hey! You found this booklet interesting? Support Converting Colors with the new Membership Option!

The pro membership hides all ads, plus gives you double the colors in the color bucket, and more awesome pro features!

[Learn more, Memberships starting at \\$2.50/m!](#)

**Follow me
on Twitter!**

@ConvertingColor