

# Converting Colors

Decimal(14662304)

Have a look what the booklet for  
Decimal(14662304) contains.

<b>Decimal(14662304)</b> .....	3
<i><b>Conversions</b></i> .....	4
<i><b>Details</b></i> .....	6
<i><b>Harmonies</b></i> .....	11
<i><b>Previews</b></i> .....	23
<i><b>Color Blindness Simulation</b></i> .....	26
<i><b>CSS Examples</b></i> .....	29

# **Color**

**Decimal(14662304)**

# Conversions

## Conversions Part 1

Format	Color
Hex	DFBAA0
RGB	223, 186, 160
RGB Percent	87%, 73%, 63%
CMY	0.1255, 0.2706, 0.3725
CMYK	0.00, 0.17, 0.28, 0.13
HSL	25°, 50%, 75%
HSV	25°, 28%, 87%
XYZ	54.3355, 53.3439, 40.6903
YIQ	194.0990, 30.3980, -0.2420

# Conversions

## Conversions Part 2

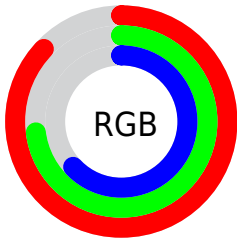
<b>Format</b>	<b>Color</b>
<a href="#">RYB</a>	<a href="#">223, 204, 160</a>
Decimal	<a href="#">14662304</a>
CIELab	<a href="#">78.08, 9.46, 18.14</a>
CIELCh	<a href="#">78, 20.464, 62.451</a>
Yxy	<a href="#">53.3439, 0.3662, 0.3595</a>
Android (android.graphics.Color)	<a href="#">4292852384</a> ( <a href="#">0xFFDFBAA0</a> )
YUV	<a href="#">194.0990, -16.8108, 25.3462</a>
Hunter-Lab	<a href="#">73.0369, 4.9798, 18.0942</a>

# Details

The Decimal color **14662304** is a light color, and the websafe version is hex **FFCC99**. A complement of this color would be **10536415**, and the grayscale version is **12763842**.

A 20% lighter version of the original color is **16773847**, and **10978668** is the 20% darker color. If you saturate the color by 10%, you get **14658954**, and if you desaturate by 10%, it is **14665654**.

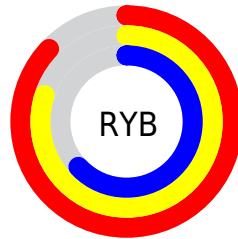
# Distribution



Red (87%)

Green (73%)

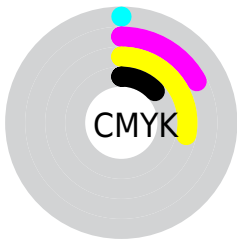
Blue (63%)



Red (87%)

Yellow (80%)

Blue (63%)

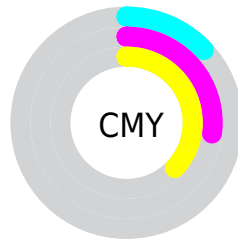


Cyan (0%)

Magenta (17%)

Yellow (28%)

Black (13%)



Cyan (13%)

Magenta (27%)

Yellow (37%)

# Brightness & Saturation Gradients

These gradients show how the Decimal color 14662304 changes by changing the brightness by 10 percent. The first figure shows a shift by +10% for each color and the second figure -10%.

Similar to the brightness gradients but the following saturation gradients show a change of the Decimal color 14662304 by changing the saturation by 10% instead.



14662304

14662304

16777215

12820358

16773847

10978668

16777203

9202772

7492413

5782567

4204050

2691584

196608

0

 14662304

 14662304

 14658954

 14665654

 14655603

 14669005

 14652253

 14672355

 14648903

 14675705

 14645552

 14679039

 14641946

 14680063

 14638596

 14638080

# Harmonies

## Analogous

The Analogous color harmony consists of three colors that are next to each other on the color wheel.



15250862



14662304



13549723

# Triad

The Triadic color harmony groups three colors that are evenly spaced from another and form a triangle on the color wheel.



14662304



9686210



13024481

# Complementary

The Complementary color scheme is a pair of colors which are on the opposite of each other on the color wheel.



14662304



10536415

# Split Complementary

Split-complementary colors differ from the complementary color scheme. The scheme consists of three colors, the original color and two neighbors of the complement color.



11387623



14662304



9358293

# Square

The Square scheme is like the rectangle color scheme, but the four colors are evenly spaced on the color wheel.



14662304



10799791



10012898



14399187

# Rectangle

The Rectangle color scheme consists of four colors that form a rectangle on the color wheel.



14662304



12698782



10012898



12500708

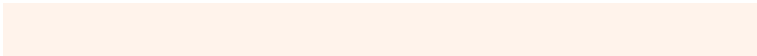


# Sweetspot

The Sweet Spot groups the original color and five complimentary colors.



14662304



16774123



14655686



8419443



0



8421504



# Same Dimension

The Same Dimension uses a secret algorithm to generate beautiful new colors.



14662304



16764072



14670240



7367269



11553024



3150848

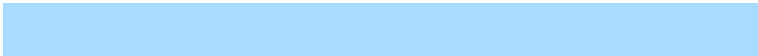


# Inverse Universe

The Inverse Universe completely reimagines the original color for something new.



10536415



11066367



10528479



6646896



26544



7216



# Previews

## White Background



This preview shows how the Decimal color 14662304 looks on a white background.

## Color Contrast Check

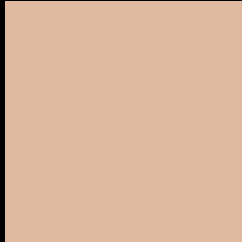
Large Text (above 18pt) WCAG AA × Fail

Any Text WCAG AA × Fail

Large Text (above 18pt) WCAG AAA × Fail

Any Text WCAG AAA × Fail

# Black Background



This preview shows how the Decimal color 14662304 looks on a black background.

## Color Contrast Check

Large Text (above 18pt) WCAG AA ✓ Pass

Any Text WCAG AA ✓ Pass

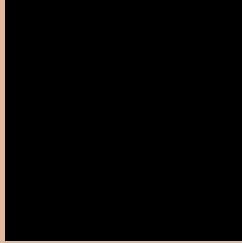
Large Text (above 18pt) WCAG AAA ✓ Pass

Any Text WCAG AAA ✓ Pass

If you want to check with other color combinations, try the [Color Contrast Checker](#).



## Decimal 14662304 Background



This preview shows how black text looks on a background with the Decimal color 14662304.



This preview shows how white text looks on a background with the Decimal color 14662304.

# Color Blindness Simulation

Color vision deficiency is a very complex topic, and I could not describe the different causes any better than Wikipedia does, so if you want to learn more, you should check out their [article about color blindness](#).

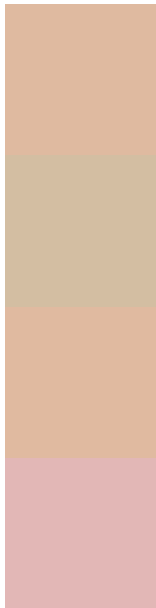
## Dichromacy





**Tritanopia**  
14923203

# Trichromacy



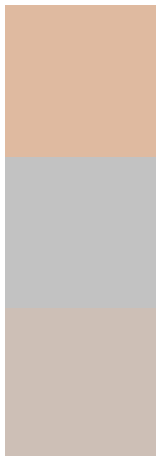
**Original Color**  
14662304

**Protanomaly**  
13876898

**Deuteranomaly**  
14727840

**Tritanomaly**  
14858166

# Monochromacy



**Original Color**  
14662304

**Achromatopsia**  
12763842

**Achromatomaly**  
13483958

# CSS Examples

## Text

The CSS property to change the color of the text to Decimal 14662304 is called "color". The color property can be set on classes, ids or directly on the HTML element.

This example shows how text in the color #DFBAA0 looks like.

```
.text, #text, p{  
  color:#DFBAA0  
}
```

If you want to add a text shadow in that color use the text-shadow property, you can generate a text shadow directly with our [CSS Text Shadow Generator](#).

Here you see how black text with a 4 pixel #DFBAA0 colored shadow looks like.

```
.shadow{ text-shadow: 4px 4px 2px #DFBAA0
}
```

## Border

The CSS property to change the border of an element to Decimal 14662304 is called "border". The border property can be set on classes, ids or directly on the HTML element.

This example shows the color as border, it can be applied via the CSS property "border" or "border-color".

```
.border, #border, table{ border:4px solid
#DFBAA0 }
```

If only the border color should be changed use the property `border-color`.

```
.border{ border-color:#DFBAA0 }
```

If you want to add a box shadow in that color use:

Here you see how a box with a 4 pixel #DFBAA0 colored shadow looks like.

```
.boxshadow{ -moz-box-shadow:4px 4px 4px  
4px #DFBAA0; -webkit-box-shadow:4px 4px  
4px 4px #DFBAA0; box-shadow:4px 4px 4px  
4px #DFBAA0 }
```

# Background

The CSS property to change the background color of an element to Decimal 14662304 is called "background". The background property can be set on classes, ids or directly on the HTML element.

```
.background, #background, body{  
background:#DFBAA0 }
```

If only the background color should be changed can be used:

```
.background{ background-color:#DFBAA0 }
```

This example shows the color as background, it is applied via the CSS property "background".

To optimize and compress your CSS code, you can use our [online CSS compressor and optimizer](#) based on csstidy. If you want to create a linear or radial gradient as background or border, check our [CSS Gradient Generator](#).



Hey! You found this booklet interesting? Support Converting Colors with the new Membership Option!

The pro membership hides all ads, plus gives you double the colors in the color bucket, and more awesome pro features!

**[Learn more, Memberships starting at \\$2.50/m!](#)**

**Follow me  
on Twitter!**

@ConvertingColor