

Converting Colors

Decimal(14663339)

Have a look what the booklet for
Decimal(14663339) contains.

Decimal(14663339)	3
<i>Conversions</i>	4
<i>Details</i>	6
<i>Harmonies</i>	11
<i>Previews</i>	23
<i>Color Blindness Simulation</i>	26
<i>CSS Examples</i>	29

Color

Decimal(14663339)

Conversions

Conversions Part 1

Format	Color
Hex	DFBEAB
RGB	223, 190, 171
RGB Percent	87%, 75%, 67%
CMY	0.1255, 0.2549, 0.3294
CMYK	0.00, 0.15, 0.23, 0.13
HSL	22°, 45%, 77%
HSV	22°, 23%, 87%
XYZ	56.1956, 55.4552, 46.2702
YIQ	197.7010, 25.7670, 1.0870

Conversions

Conversions Part 2

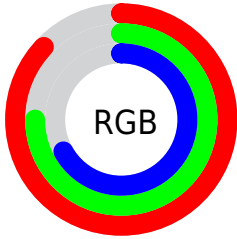
Format	Color
R _Y B	223, 201, 171
Decimal	14663339
CIE Lab	79.30, 8.87, 13.95
CIE LCh	79, 16.530, 57.563
Yxy	55.4552, 0.3558, 0.3512
Android (android.graphics.Color)	4292853419 (0xFFDFBEAB)
YUV	197.7010, -13.1636, 22.1872
Hunter-Lab	74.4682, 4.3811, 15.2884

Details

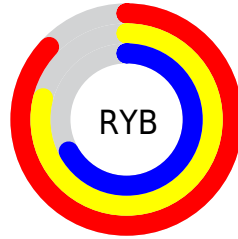
The Decimal color **14663339** is a light color, and the websafe version is hex **FFCCCC**. A complement of this color would be **11259103**, and the grayscale version is **13027014**.

A 20% lighter version of the original color is **16774882**, and **10979703** is the 20% darker color. If you saturate the color by 10%, you get **14659733**, and if you desaturate by 10%, it is **14666945**.

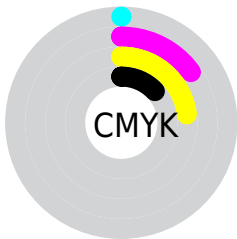
Distribution



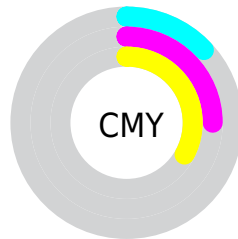
- Red (87%)
- Green (75%)
- Blue (67%)



- Red (87%)
- Yellow (79%)
- Blue (67%)



- Cyan (0%)
- Magenta (15%)
- Yellow (23%)
- Black (13%)



- Cyan (13%)
- Magenta (25%)
- Yellow (33%)

Brightness & Saturation Gradients

These gradients show how the Decimal color 14663339 changes by changing the brightness by 10 percent. The first figure shows a shift by +10% for each color and the second figure -10%.

Similar to the brightness gradients but the following saturation gradients show a change of the Decimal color 14663339 by changing the saturation by 10% instead.

 14663339

 14663339

16777215

 12821392

 16774882

 10979703

 9203550

 7493446

 5849136

 4270619

 2823424

 983040

 0

 14663339

 14663339

 14659733

 14666945

 14656126

 14670552

 14652520

 14674158

 14648658

 14678015

 14645051

 14680063

 14641445

 14637839

 14635264

Harmonies

Analogous

The Analogous color harmony consists of three colors that are next to each other on the color wheel.



15055799



14663339



13812646

Triad

The Triadic color harmony groups three colors that are evenly spaced from another and form a triangle on the color wheel.



14663339



10669507



13025760

Complementary

The Complementary color scheme is a pair of colors which are on the opposite of each other on the color wheel.



14663339



11259103

Split Complementary

Split-complementary colors differ from the complementary color scheme. The scheme consists of three colors, the original color and two neighbors of the complement color.



11716323



14663339



10276306

Square

The Square scheme is like the rectangle color scheme, but the four colors are evenly spaced on the color wheel.



14663339



11586740



10668766



14204117

Rectangle

The Rectangle color scheme consists of four colors that form a rectangle on the color wheel.



14663339



13092519



10668766



12567522

Sweetspot

The Sweet Spot groups the original color and five complimentary colors.



14663339



16774381



14658509



8419701



0



8421504

Same Dimension

The Same Dimension uses a secret algorithm to generate beautiful new colors.



14663339



16765624



14669739



7367013



11550720



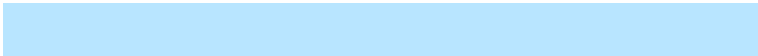
3150336

Inverse Universe

The Inverse Universe completely reimagines the original color for something new.



11259103



12117503



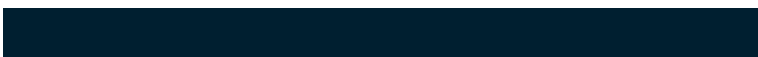
11252703



6646896



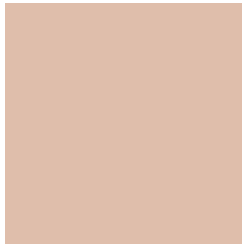
28848



7984

Previews

White Background



This preview shows how the Decimal color 14663339 looks on a white background.

Color Contrast Check

Large Text (above 18pt) WCAG AA × Fail

Any Text WCAG AA × Fail

Large Text (above 18pt) WCAG AAA × Fail

Any Text WCAG AAA × Fail

Black Background



This preview shows how the Decimal color 14663339 looks on a black background.

Color Contrast Check

Large Text (above 18pt) WCAG AA ✓ Pass

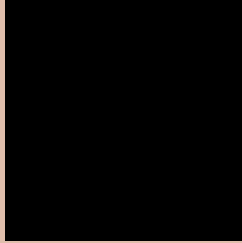
Any Text WCAG AA ✓ Pass

Large Text (above 18pt) WCAG AAA ✓ Pass

Any Text WCAG AAA ✓ Pass

If you want to check with other color combinations, try the [Color Contrast Checker](#).

Decimal 14663339 Background



This preview shows how black text looks on a background with the Decimal color 14663339.



This preview shows how white text looks on a background with the Decimal color 14663339.

Color Blindness Simulation

Color vision deficiency is a very complex topic, and I could not describe the different causes any better than Wikipedia does, so if you want to learn more, you should check out their [article about color blindness](#).


Dichromacy



Original Color
14663339

Protanopia
13485230

Deuteranopia
14794155



Tritanopia
14858952

Trichromacy



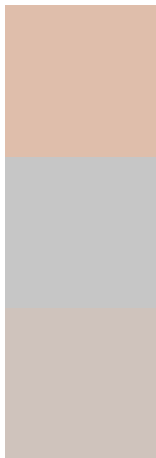
Original Color
14663339

Protanomaly
13943469

Deuteranomaly
14728619

Tritanomaly
14793661

Monochromacy



Original Color
14663339

Achromatopsia
13027014

Achromatomaly
13616060

CSS Examples

Text

The CSS property to change the color of the text to Decimal 14663339 is called "color". The color property can be set on classes, ids or directly on the HTML element.

This example shows how text in the color #DFBEAB looks like.

```
.text, #text, p{  
  color:#DFBEAB  
}
```

If you want to add a text shadow in that color use the text-shadow property, you can generate a text shadow directly with our [CSS Text Shadow Generator](#).

Here you see how black text with a 4 pixel #DFBEAB colored shadow looks like.

```
.shadow{ text-shadow: 4px 4px 2px #DFBEAB
}
```

Border

The CSS property to change the border of an element to Decimal 14663339 is called "border". The border property can be set on classes, ids or directly on the HTML element.

This example shows the color as border, it can be applied via the CSS property "border" or "border-color".

```
.border, #border, table{ border:4px solid
#DFBEAB }
```

If only the border color should be changed use the property `border-color`.

```
.border{ border-color:#DFBEAB }
```

If you want to add a box shadow in that color use:

Here you see how a box with a 4 pixel #DFBEAB colored shadow looks like.

```
.boxshadow{ -moz-box-shadow:4px 4px 4px  
4px #DFBEAB; -webkit-box-shadow:4px 4px  
4px 4px #DFBEAB; box-shadow:4px 4px 4px  
4px #DFBEAB }
```

Background

The CSS property to change the background color of an element to Decimal 14663339 is called "background". The background property can be set on classes, ids or directly on the HTML element.

```
.background, #background, body{  
background:#DFBEAB }
```

If only the background color should be changed can be used:

```
.background{ background-color:#DFBEAB }
```

This example shows the color as background, it is applied via the CSS property "background".

To optimize and compress your CSS code, you can use our [online CSS compressor and optimizer](#) based on csstidy. If you want to create a linear or radial gradient as background or border, check our [CSS Gradient Generator](#).

Hey! You found this booklet interesting? Support Converting Colors with the new Membership Option!

The pro membership hides all ads, plus gives you double the colors in the color bucket, and more awesome pro features!

[Learn more, Memberships starting at \\$2.50/m!](#)

**Follow me
on Twitter!**

@ConvertingColor