

Converting Colors

Decimal(14663608)

Have a look what the booklet for
Decimal(14663608) contains.

Decimal(14663608)	3
<i>Conversions</i>	4
<i>Details</i>	6
<i>Harmonies</i>	11
<i>Previews</i>	23
<i>Color Blindness Simulation</i>	26
<i>CSS Examples</i>	29

Color

Decimal(14663608)

Conversions

Conversions Part 1

Format	Color
Hex	DFBFB8
RGB	223, 191, 184
RGB Percent	87%, 75%, 72%
CMY	0.1255, 0.2510, 0.2784
CMYK	0.00, 0.14, 0.17, 0.13
HSL	11°, 38%, 80%
HSV	11°, 17%, 87%
XYZ	57.7140, 56.4103, 53.1938
YIQ	199.7700, 21.3190, 4.6070

Conversions

Conversions Part 2

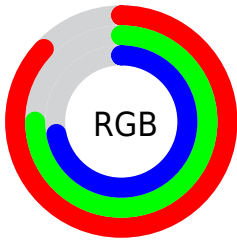
Format	Color
R _Y B	223, 193, 184
Decimal	14663608
CIE Lab	79.85, 10.27, 7.73
CIE LCh	80, 12.855, 36.992
Yxy	56.4103, 0.3449, 0.3371
Android (android.graphics.Color)	4292853688 (0xFFDFBFB8)
YUV	199.7700, -7.7746, 20.3727
Hunter-Lab	75.1068, 5.7271, 10.5830

Details

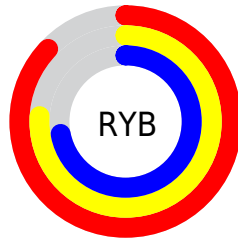
The Decimal color **14663608** is a light color, and the websafe version is hex **FFCCCC**. A complement of this color would be **12114143**, and the grayscale version is **13158600**.

A 20% lighter version of the original color is **16775152**, and **10979971** is the 20% darker color. If you saturate the color by 10%, you get **14658978**, and if you desaturate by 10%, it is **14668238**.

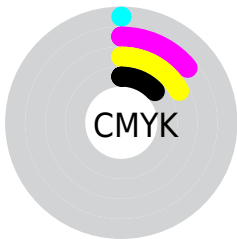
Distribution



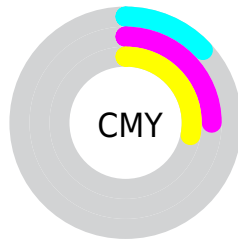
- Red (87%)
- Green (75%)
- Blue (72%)



- Red (87%)
- Yellow (76%)
- Blue (72%)



- Cyan (0%)
- Magenta (14%)
- Yellow (17%)
- Black (13%)



- Cyan (13%)
- Magenta (25%)
- Yellow (28%)

Brightness & Saturation Gradients

These gradients show how the Decimal color 14663608 changes by changing the brightness by 10 percent. The first figure shows a shift by +10% for each color and the second figure -10%.

Similar to the brightness gradients but the following saturation gradients show a change of the Decimal color 14663608 by changing the saturation by 10% instead.

 14663608

 14663608

16777215

 12821661

 16775152

 10979971

 9269354

 7559250

 5914683

 4336165

 2823440

 1376256

 0

 14663608

 14663608

 14658978

 14668238

 14654091

 14673125

 14649461

 14677755

 14644831

 14680063

 14640201

 14635314

 14630684

 14626054

 14624768

Harmonies

Analogous

The Analogous color harmony consists of three colors that are next to each other on the color wheel.



14663363



14663608



14205616

Triad

The Triadic color harmony groups three colors that are evenly spaced from another and form a triangle on the color wheel.



14663608



11717820



12437213

Complementary

The Complementary color scheme is a pair of colors which are on the opposite of each other on the color wheel.



14663608



12114143

Split Complementary

Split-complementary colors differ from the complementary color scheme. The scheme consists of three colors, the original color and two neighbors of the complement color.



11520732



14663608



11128264

Square

The Square scheme is like the rectangle color scheme, but the four colors are evenly spaced on the color wheel.



14663608



12569267



11062484



13419225

Rectangle

The Rectangle color scheme consists of four colors that form a rectangle on the color wheel.



14663608



13747630



11062484



12109790

Sweetspot

The Sweet Spot groups the original color and five complimentary colors.



14663608



16774642



14661849



8419704



0



8421504

Same Dimension

The Same Dimension uses a secret algorithm to generate beautiful new colors.



14663608



16765897



14668472



7366501



11542528



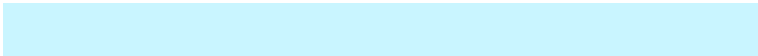
3148032

Inverse Universe

The Inverse Universe completely reimagines the original color for something new.



12114143



13235711



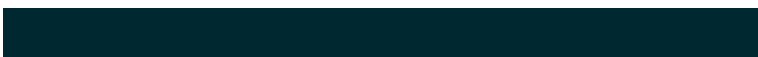
12109279



6647408



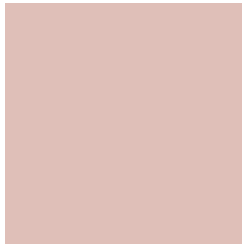
37040



10288

Previews

White Background



This preview shows how the Decimal color 14663608 looks on a white background.

Color Contrast Check

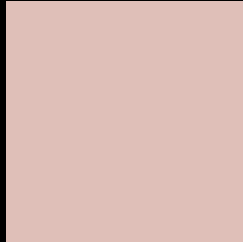
Large Text (above 18pt) WCAG AA × Fail

Any Text WCAG AA × Fail

Large Text (above 18pt) WCAG AAA × Fail

Any Text WCAG AAA × Fail

Black Background



This preview shows how the Decimal color 14663608 looks on a black background.

Color Contrast Check

Large Text (above 18pt) WCAG AA ✓ Pass

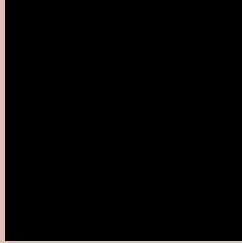
Any Text WCAG AA ✓ Pass

Large Text (above 18pt) WCAG AAA ✓ Pass

Any Text WCAG AAA ✓ Pass

If you want to check with other color combinations, try the [Color Contrast Checker](#).

Decimal 14663608 Background



This preview shows how black text looks on a background with the Decimal color 14663608.



This preview shows how white text looks on a background with the Decimal color 14663608.

Color Blindness Simulation

Color vision deficiency is a very complex topic, and I could not describe the different causes any better than Wikipedia does, so if you want to learn more, you should check out their [article about color blindness](#).

Dichromacy





Tritanopia
14793931

Trichromacy



Original Color
14663608

Protanomaly
13878202

Deuteranomaly
14598072

Tritanomaly
14728644

Monochromacy



Original Color
14663608

Achromatopsia
13158600

Achromatomaly
13682114

CSS Examples

Text

The CSS property to change the color of the text to Decimal 14663608 is called "color". The color property can be set on classes, ids or directly on the HTML element.

This example shows how text in the color #DFBFB8 looks like.

```
.text, #text, p{  
    color:#DFBFB8  
}
```

If you want to add a text shadow in that color use the text-shadow property, you can generate a text shadow directly with our [CSS Text Shadow Generator](#).

Here you see how black text with a 4 pixel #DFBFB8 colored shadow looks like.

```
.shadow{ text-shadow: 4px 4px 2px #DFBFB8  
}
```

Border

The CSS property to change the border of an element to Decimal 14663608 is called "border". The border property can be set on classes, ids or directly on the HTML element.

This example shows the color as border, it can be applied via the CSS property "border" or "border-color".

```
.border, #border, table{ border:4px solid  
#DFBFB8 }
```

If only the border color should be changed use the property `border-color`.

```
.border{ border-color:#DFBFB8 }
```

If you want to add a box shadow in that color use:

Here you see how a box with a 4 pixel #DFBFB8 colored shadow looks like.

```
.boxshadow{ -moz-box-shadow:4px 4px 4px  
4px #DFBFB8; -webkit-box-shadow:4px 4px  
4px 4px #DFBFB8; box-shadow:4px 4px 4px  
4px #DFBFB8 }
```

Background

The CSS property to change the background color of an element to Decimal 14663608 is called "background". The background property can be set on classes, ids or directly on the HTML element.

```
.background, #background, body{  
background:#DFBFB8 }
```

If only the background color should be changed can be used:

```
.background{ background-color:#DFBFB8 }
```

This example shows the color as background, it is applied via the CSS property "background".

To optimize and compress your CSS code, you can use our [online CSS compressor and optimizer](#) based on csstidy. If you want to create a linear or radial gradient as background or border, check our [CSS Gradient Generator](#).

Hey! You found this booklet interesting? Support Converting Colors with the new Membership Option!

The pro membership hides all ads, plus gives you double the colors in the color bucket, and more awesome pro features!

[Learn more, Memberships starting at \\$2.50/m!](#)

**Follow me
on Twitter!**

@ConvertingColor