

Converting Colors

Decimal(14664641)

Have a look what the booklet for
Decimal(14664641) contains.

Decimal(14664641)	3
<i>Conversions</i>	4
<i>Details</i>	6
<i>Harmonies</i>	11
<i>Previews</i>	23
<i>Color Blindness Simulation</i>	26
<i>CSS Examples</i>	29

Color

Decimal(14664641)

Conversions

Conversions Part 1

Format	Color
Hex	DFC3C1
RGB	223, 195, 193
RGB Percent	87%, 76%, 76%
CMY	0.1255, 0.2353, 0.2431
CMYK	0.00, 0.13, 0.13, 0.13
HSL	4°, 32%, 82%
HSV	4°, 13%, 87%
XYZ	59.5722, 58.5684, 58.6171
YIQ	203.1440, 17.3300, 5.3140

Conversions

Conversions Part 2

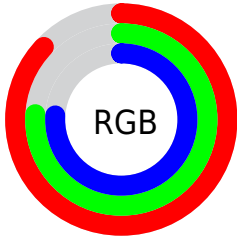
Format	Color
R _Y B	223, 195, 193
Decimal	14664641
CIE Lab	81.05, 9.56, 4.64
CIE LCh	81, 10.625, 25.865
Yxy	58.5684, 0.3370, 0.3313
Android (android.graphics.Color)	4292854721 (0xFFDFC3C1)
YUV	203.1440, -5.0010, 17.4137
Hunter-Lab	76.5300, 5.0197, 8.1587

Details

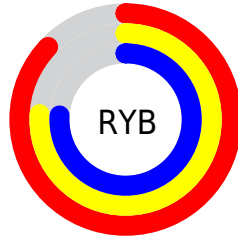
The Decimal color **14664641** is a light color, and the websafe version is hex **FFCCCC**. A complement of this color would be **12705247**, and the grayscale version is **13355979**.

A 20% lighter version of the original color is **16776441**, and **11046284** is the 20% darker color. If you saturate the color by 10%, you get **14659243**, and if you desaturate by 10%, it is **14670039**.

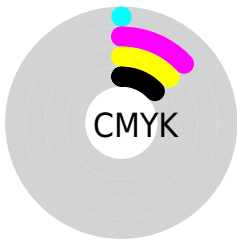
Distribution



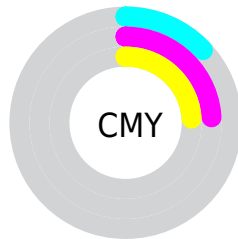
- Red (87%)
- Green (76%)
- Blue (76%)



- Red (87%)
- Yellow (76%)
- Blue (76%)



- Cyan (0%)
- Magenta (13%)
- Yellow (13%)
- Black (13%)



- Cyan (13%)
- Magenta (24%)
- Yellow (24%)

Brightness & Saturation Gradients

These gradients show how the Decimal color 14664641 changes by changing the brightness by 10 percent. The first figure shows a shift by +10% for each color and the second figure -10%.

Similar to the brightness gradients but the following saturation gradients show a change of the Decimal color 14664641 by changing the saturation by 10% instead.

 14664641	 14664641
16777215	 12822694
 16776441	 11046284
	 9270386
	 7560026
	 5915714
	 4402476
	 2889752
	 1572864
	 0

 14664641

 14664641

 14659243

 14670039

 14653844

 14675438

 14648702

 14680063

 14643304

 14637906

 14632507

 14627109

 14621711

 14618368

Harmonies

Analogous

The Analogous color harmony consists of three colors that are next to each other on the color wheel.



14533579



14664641



14403001

Triad

The Triadic color harmony groups three colors that are evenly spaced from another and form a triangle on the color wheel.



14664641



12439230



12438493

Complementary

The Complementary color scheme is a pair of colors which are on the opposite of each other on the color wheel.



14664641



12705247

Split Complementary

Split-complementary colors differ from the complementary color scheme. The scheme consists of three colors, the original color and two neighbors of the complement color.



11849177



14664641



11849671

Square

The Square scheme is like the rectangle color scheme, but the four colors are evenly spaced on the color wheel.



14664641



13159351



11653074



13289435

Rectangle

The Rectangle color scheme consists of four colors that form a rectangle on the color wheel.



14664641



14075830



11653074



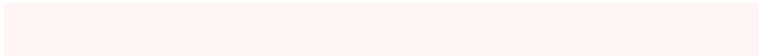
12242140

Sweetspot

The Sweet Spot groups the original color and five complimentary colors.



14664641



16774645



14664157



8419961



0



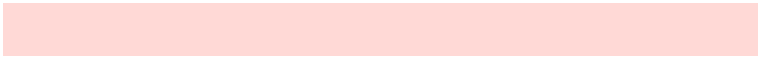
8421504

Same Dimension

The Same Dimension uses a secret algorithm to generate beautiful new colors.



14664641



16767446



14668481



7366245



11537408



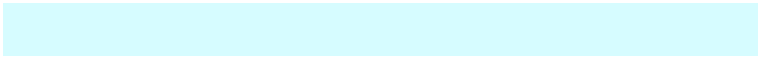
3146496

Inverse Universe

The Inverse Universe completely reimagines the original color for something new.



12705247



14089471



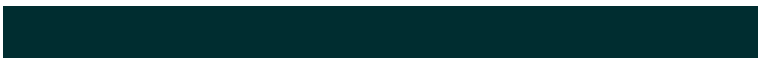
12701663



6647664



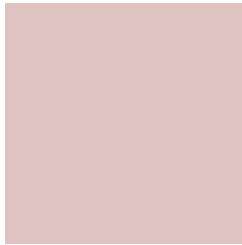
42160



11568

Previews

White Background



This preview shows how the Decimal color 14664641 looks on a white background.

Color Contrast Check

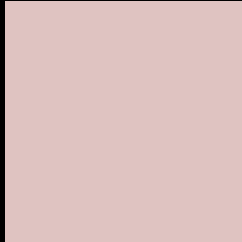
Large Text (above 18pt) WCAG AA × Fail

Any Text WCAG AA × Fail

Large Text (above 18pt) WCAG AAA × Fail

Any Text WCAG AAA × Fail

Black Background



This preview shows how the Decimal color 14664641 looks on a black background.

Color Contrast Check

Large Text (above 18pt) WCAG AA ✓ Pass

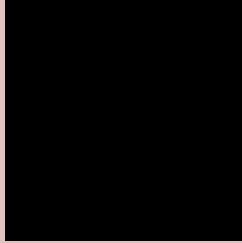
Any Text WCAG AA ✓ Pass

Large Text (above 18pt) WCAG AAA ✓ Pass

Any Text WCAG AAA ✓ Pass

If you want to check with other color combinations, try the [Color Contrast Checker](#).

Decimal 14664641 Background



This preview shows how black text looks on a background with the Decimal color 14664641.

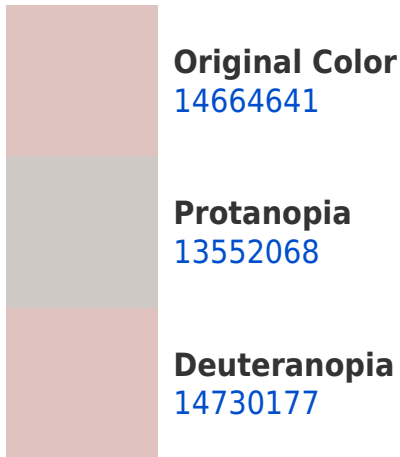


This preview shows how white text looks on a background with the Decimal color 14664641.

Color Blindness Simulation

Color vision deficiency is a very complex topic, and I could not describe the different causes any better than Wikipedia does, so if you want to learn more, you should check out their [article about color blindness](#).

Dichromacy





Tritanopia
14795216

Trichromacy



Original Color
14664641

Protanomaly
13944771

Deuteranomaly
14730177

Tritanomaly
14729931

Monochromacy



Original Color
14664641

Achromatopsia
13355979

Achromatomaly
13813959

CSS Examples

Text

The CSS property to change the color of the text to Decimal 14664641 is called "color". The color property can be set on classes, ids or directly on the HTML element.

This example shows how text in the color #DFC3C1 looks like.

```
.text, #text, p{  
    color:#DFC3C1  
}
```

If you want to add a text shadow in that color use the text-shadow property, you can generate a text shadow directly with our [CSS Text Shadow Generator](#).

Here you see how black text with a 4 pixel #DFC3C1 colored shadow looks like.

```
.shadow{ text-shadow: 4px 4px 2px #DFC3C1
}
```

Border

The CSS property to change the border of an element to Decimal 14664641 is called "border". The border property can be set on classes, ids or directly on the HTML element.

This example shows the color as border, it can be applied via the CSS property "border" or "border-color".

```
.border, #border, table{ border:4px solid
#DFC3C1 }
```

If only the border color should be changed use the property `border-color`.

```
.border{ border-color:#DFC3C1 }
```

If you want to add a box shadow in that color use:

Here you see how a box with a 4 pixel #DFC3C1 colored shadow looks like.

```
.boxshadow{ -moz-box-shadow:4px 4px 4px  
4px #DFC3C1; -webkit-box-shadow:4px 4px  
4px 4px #DFC3C1; box-shadow:4px 4px 4px  
4px #DFC3C1 }
```

Background

The CSS property to change the background color of an element to Decimal 14664641 is called "background". The background property can be set on classes, ids or directly on the HTML element.

```
.background, #background, body{  
background:#DFC3C1 }
```

If only the background color should be changed can be used:

```
.background{ background-color:#DFC3C1 }
```

This example shows the color as background, it is applied via the CSS property "background".

To optimize and compress your CSS code, you can use our [online CSS compressor and optimizer](#) based on csstidy. If you want to create a linear or radial gradient as background or border, check our [CSS Gradient Generator](#).

Hey! You found this booklet interesting? Support Converting Colors with the new Membership Option!

The pro membership hides all ads, plus gives you double the colors in the color bucket, and more awesome pro features!

[Learn more, Memberships starting at \\$2.50/m!](#)

**Follow me
on Twitter!**

@ConvertingColor