

# Converting Colors

Decimal(14704016)

Have a look what the booklet for  
Decimal(14704016) contains.

<b>Decimal(14704016)</b> .....	3
<i><b>Conversions</b></i> .....	4
<i><b>Details</b></i> .....	6
<i><b>Harmonies</b></i> .....	11
<i><b>Previews</b></i> .....	23
<i><b>Color Blindness Simulation</b></i> .....	26
<i><b>CSS Examples</b></i> .....	29

# **Color**

**Decimal(14704016)**

# Conversions

## Conversions Part 1

Format	Color
Hex	E05D90
RGB	224, 93, 144
RGB Percent	88%, 36%, 56%
CMY	0.1216, 0.6353, 0.4353
CMYK	0.00, 0.58, 0.36, 0.12
HSL	337°, 68%, 62%
HSV	337°, 58%, 88%
XYZ	39.6889, 25.6896, 29.2523
YIQ	137.9830, 61.7050, 43.6330

# Conversions

## Conversions Part 2

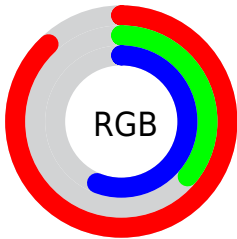
Format	Color
R <sub>Y</sub> B	224, 93, 144
Decimal	14704016
CIE Lab	57.74, 55.87, -1.91
CIE LCh	58, 55.903, 358.040
Yxy	25.6896, 0.4194, 0.2715
Android (android.graphics.Color)	4292894096 (0xFFE05D90)
YUV	137.9830, 2.9664, 75.4369
Hunter-Lab	50.6849, 51.0759, 1.2608

# Details

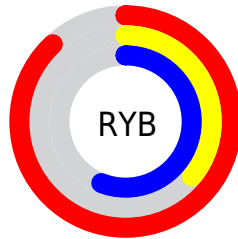
The Decimal color **14704016** is a light color, and the websafe version is hex **FF6699**. The color can be described as light muted rose. A complement of this color would be **6152365**, and the grayscale version is **9079434**.

A 20% lighter version of the original color is **16749766**, and **10822238** is the 20% darker color. If you saturate the color by 10%, you get **14698370**, and if you desaturate by 10%, it is **14709662**.

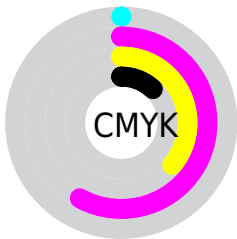
# Distribution



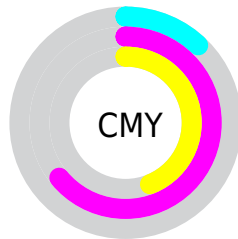
- Red (88%)
- Green (36%)
- Blue (56%)



- Red (88%)
- Yellow (36%)
- Blue (56%)



- Cyan (0%)
- Magenta (58%)
- Yellow (36%)
- Black (12%)



- Cyan (12%)
- Magenta (64%)
- Yellow (44%)

# Brightness & Saturation Gradients

These gradients show how the Decimal color 14704016 changes by changing the brightness by 10 percent. The first figure shows a shift by +10% for each color and the second figure -10%.

Similar to the brightness gradients but the following saturation gradients show a change of the Decimal color 14704016 by changing the saturation by 10% instead.



 14704016

 14704016

16777215

 12730742

 16749766

 10822238

 16757218

 8912966

 16764414

 7012400

 16771839

 5177371

 3604482

 524288

 0

 14704016

 14704016

14698370

14709662

14692469

14715563

14686823

14721209

14680921

14727111

14680151

14732756

14738402

14744304

14745597

14745599

# Harmonies

## Analogous

The Analogous color harmony consists of three colors that are next to each other on the color wheel.



12806847



14704016



14770784

# Triad

The Triadic color harmony groups three colors that are evenly spaced from another and form a triangle on the color wheel.



14704016



7836973



40413

# Complementary

The Complementary color scheme is a pair of colors which are on the opposite of each other on the color wheel.



14704016



6152365

# Split Complementary

Split-complementary colors differ from the complementary color scheme. The scheme consists of three colors, the original color and two neighbors of the complement color.



41655



14704016



3186260

# Square

The Square scheme is like the rectangle color scheme, but the four colors are evenly spaced on the color wheel.



14704016



10979103



41606



37356

# Rectangle

The Rectangle color scheme consists of four colors that form a rectangle on the color wheel.



14704016



13987395



41606



40914



# Sweetspot

The Sweet Spot groups the original color and five complimentary colors.



14704016



16765411



11296224



8414062



0



8421504



# Same Dimension

The Same Dimension uses a secret algorithm to generate beautiful new colors.



14704016



16731538



14707293



7365993



11534404



3145747



# Inverse Universe

The Inverse Universe completely reimagines the original color for something new.



14704016



16731538



6149088



7365993



11534404



3145747



# Previews

## White Background



This preview shows how the Decimal color 14704016 looks on a white background.

## Color Contrast Check

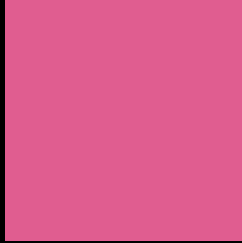
Large Text (above 18pt) WCAG AA ✓ Pass

Any Text WCAG AA × Fail

Large Text (above 18pt) WCAG AAA × Fail

Any Text WCAG AAA × Fail

# Black Background



This preview shows how the Decimal color 14704016 looks on a black background.

## Color Contrast Check

Large Text (above 18pt) WCAG AA ✓ Pass

Any Text WCAG AA ✓ Pass

Large Text (above 18pt) WCAG AAA ✓ Pass

Any Text WCAG AAA × Fail

If you want to check with other color combinations, try the [Color Contrast Checker](#).



## Decimal 14704016 Background



This preview shows how black text looks on a background with the Decimal color 14704016.




This preview shows how white text looks on a background with the Decimal color 14704016.

# Color Blindness Simulation

Color vision deficiency is a very complex topic, and I could not describe the different causes any better than Wikipedia does, so if you want to learn more, you should check out their [article about color blindness](#).

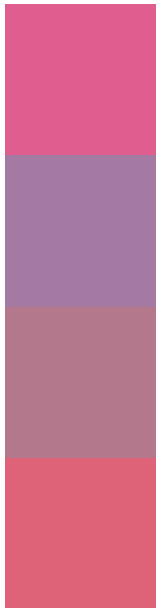
## Dichromacy





**Tritanopia**  
14509419

# Trichromacy



**Original Color**  
14704016

**Protanomaly**  
10844834

**Deuteranomaly**  
11761804

**Tritanomaly**  
14574200

# Monochromacy



**Original Color**  
14704016

**Achromatopsia**  
9079434

**Achromatomaly**  
11106956

# CSS Examples

## Text

The CSS property to change the color of the text to Decimal 14704016 is called "color". The color property can be set on classes, ids or directly on the HTML element.

This example shows how text in the color #E05D90 looks like.

```
.text, #text, p{  
    color:#E05D90  
}
```

If you want to add a text shadow in that color use the text-shadow property, you can generate a text shadow directly with our [CSS Text Shadow Generator](#).

Here you see how black text with a 4 pixel #E05D90 colored shadow looks like.

```
.shadow{ text-shadow: 4px 4px 2px #E05D90
}
```

## Border

The CSS property to change the border of an element to Decimal 14704016 is called "border". The border property can be set on classes, ids or directly on the HTML element.

This example shows the color as border, it can be applied via the CSS property "border" or "border-color".

```
.border, #border, table{ border:4px solid
#E05D90 }
```

If only the border color should be changed use the property `border-color`.

```
.border{ border-color:#E05D90 }
```

If you want to add a box shadow in that color use:

Here you see how a box with a 4 pixel #E05D90 colored shadow looks like.

```
.boxshadow{ -moz-box-shadow:4px 4px 4px  
4px #E05D90; -webkit-box-shadow:4px 4px  
4px 4px #E05D90; box-shadow:4px 4px 4px  
4px #E05D90 }
```

# Background

The CSS property to change the background color of an element to Decimal 14704016 is called "background". The background property can be set on classes, ids or directly on the HTML element.

```
.background, #background, body{  
background:#E05D90 }
```

If only the background color should be changed can be used:

```
.background{ background-color:#E05D90 }
```

This example shows the color as background, it is applied via the CSS property "background".

To optimize and compress your CSS code, you can use our [online CSS compressor and optimizer](#) based on csstidy. If you want to create a linear or radial gradient as background or border, check our [CSS Gradient Generator](#).



Hey! You found this booklet interesting? Support Converting Colors with the new Membership Option!

The pro membership hides all ads, plus gives you double the colors in the color bucket, and more awesome pro features!

**[Learn more, Memberships starting at \\$2.50/m!](#)**

**Follow me  
on Twitter!**

@ConvertingColor