

Converting Colors

Decimal(14705015)

Have a look what the booklet for
Decimal(14705015) contains.

Decimal(14705015)	3
<i>Conversions</i>	4
<i>Details</i>	6
<i>Harmonies</i>	11
<i>Previews</i>	23
<i>Color Blindness Simulation</i>	26
<i>CSS Examples</i>	29

Color

Decimal(14705015)

Conversions

Conversions Part 1

Format	Color
Hex	E06177
RGB	224, 97, 119
RGB Percent	88%, 38%, 47%
CMY	0.1216, 0.6196, 0.5333
CMYK	0.00, 0.57, 0.47, 0.12
HSL	350°, 67%, 63%
HSV	350°, 57%, 88%
XYZ	38.3449, 25.7286, 20.3979
YIQ	137.4810, 68.6300, 33.7660

Conversions

Conversions Part 2

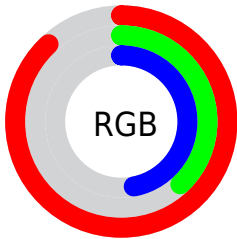
Format	Color
R _Y B	224, 97, 119
Decimal	14705015
CIE Lab	57.78, 51.44, 12.77
CIE LCh	58, 53.003, 13.937
Yxy	25.7286, 0.4539, 0.3046
Android (android.graphics.Color)	4292895095 (0xFFE06177)
YUV	137.4810, -9.1111, 75.8772
Hunter-Lab	50.7234, 46.1734, 11.6635

Details

The Decimal color **14705015** is a light color, and the websafe version is hex **CC6666**. A complement of this color would be **6414538**, and the grayscale version is **9079434**.

A 20% lighter version of the original color is **16750763**, and **10758471** is the 20% darker color. If you saturate the color by 10%, you get **14699364**, and if you desaturate by 10%, it is **14710666**.

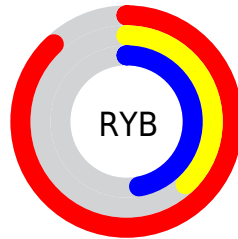
Distribution



Red (88%)

Green (38%)

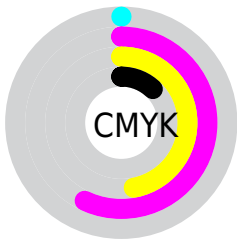
Blue (47%)



Red (88%)

Yellow (38%)

Blue (47%)

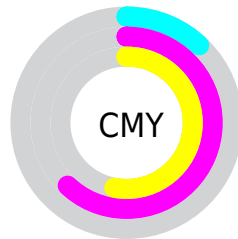


Cyan (0%)

Magenta (57%)

Yellow (47%)

Black (12%)



Cyan (12%)

Magenta (62%)

Yellow (53%)

Brightness & Saturation Gradients

These gradients show how the Decimal color 14705015 changes by changing the brightness by 10 percent. The first figure shows a shift by +10% for each color and the second figure -10%.

Similar to the brightness gradients but the following saturation gradients show a change of the Decimal color 14705015 by changing the saturation by 10% instead.

 14705015

 14705015

16777215

 12731998

 16750763

 10758471

 16757958

 8847665

 16765154

 6946844

 16772607

 5111809

 3342338

 0

 14705015

 14705015

 14699364

 14710666

 14693458

 14716572

 14687807

 14722223

 14681901

 14728129

 14680103

 14733780

 14739430

 14745337

 14745599

Harmonies

Analogous

The Analogous color harmony consists of three colors that are next to each other on the color wheel.



13853862



14705015



13987148

Triad

The Triadic color harmony groups three colors that are evenly spaced from another and form a triangle on the color wheel.



14705015



6003268



38884

Complementary

The Complementary color scheme is a pair of colors which are on the opposite of each other on the color wheel.



14705015



6414538

Split Complementary

Split-complementary colors differ from the complementary color scheme. The scheme consists of three colors, the original color and two neighbors of the complement color.



40906



14705015



41072

Square

The Square scheme is like the rectangle color scheme, but the four colors are evenly spaced on the color wheel.



14705015



9408297



41376



6130149

Rectangle

The Rectangle color scheme consists of four colors that form a rectangle on the color wheel.



14705015



12876086



41376



39646

Sweetspot

The Sweet Spot groups the original color and five complimentary colors.



14705015



16766171



13197792



8414826



0



8421504

Same Dimension

The Same Dimension uses a secret algorithm to generate beautiful new colors.



14705015



16732784



14715233



7365991



11534366



3145736

Inverse Universe

The Inverse Universe completely reimagines the original color for something new.



14705015



16732784



6404320



7365991



11534366



3145736

Previews

White Background



This preview shows how the Decimal color 14705015 looks on a white background.

Color Contrast Check

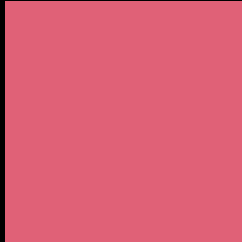
Large Text (above 18pt) WCAG AA ✓ Pass

Any Text WCAG AA × Fail

Large Text (above 18pt) WCAG AAA × Fail

Any Text WCAG AAA × Fail

Black Background



This preview shows how the Decimal color 14705015 looks on a black background.

Color Contrast Check

Large Text (above 18pt) WCAG AA ✓ Pass

Any Text WCAG AA ✓ Pass

Large Text (above 18pt) WCAG AAA ✓ Pass

Any Text WCAG AAA × Fail

If you want to check with other color combinations, try the [Color Contrast Checker](#).

Decimal 14705015 Background



This preview shows how black text looks on a background with the Decimal color 14705015.

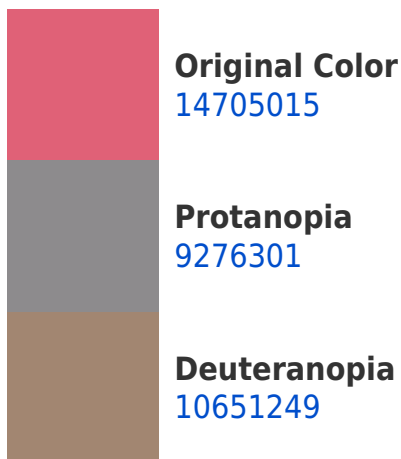


This preview shows how white text looks on a background with the Decimal color 14705015.

Color Blindness Simulation

Color vision deficiency is a very complex topic, and I could not describe the different causes any better than Wikipedia does, so if you want to learn more, you should check out their [article about color blindness](#).

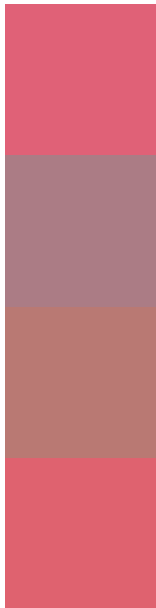
Dichromacy





Tritanopia
14639978

Trichromacy



Original Color
14705015

Protanomaly
11238533

Deuteranomaly
12155251

Tritanomaly
14639727

Monochromacy



Original Color
14705015

Achromatopsia
9013641

Achromatomaly
11106946

CSS Examples

Text

The CSS property to change the color of the text to Decimal 14705015 is called "color". The color property can be set on classes, ids or directly on the HTML element.

This example shows how text in the color #E06177 looks like.

```
.text, #text, p{  
    color:#E06177  
}
```

If you want to add a text shadow in that color use the text-shadow property, you can generate a text shadow directly with our [CSS Text Shadow Generator](#).

Here you see how black text with a 4 pixel #E06177 colored shadow looks like.

```
.shadow{ text-shadow: 4px 4px 2px #E06177
}
```

Border

The CSS property to change the border of an element to Decimal 14705015 is called "border". The border property can be set on classes, ids or directly on the HTML element.

This example shows the color as border, it can be applied via the CSS property "border" or "border-color".

```
.border, #border, table{ border:4px solid
#E06177 }
```

If only the border color should be changed use the property `border-color`.

```
.border{ border-color:#E06177 }
```

If you want to add a box shadow in that color use:

Here you see how a box with a 4 pixel #E06177 colored shadow looks like.

```
.boxshadow{ -moz-box-shadow:4px 4px 4px  
4px #E06177; -webkit-box-shadow:4px 4px  
4px 4px #E06177; box-shadow:4px 4px 4px  
4px #E06177 }
```

Background

The CSS property to change the background color of an element to Decimal 14705015 is called "background". The background property can be set on classes, ids or directly on the HTML element.

```
.background, #background, body{  
background:#E06177 }
```

If only the background color should be changed can be used:

```
.background{ background-color:#E06177 }
```

This example shows the color as background, it is applied via the CSS property "background".

To optimize and compress your CSS code, you can use our [online CSS compressor and optimizer](#) based on csstidy. If you want to create a linear or radial gradient as background or border, check our [CSS Gradient Generator](#).

Hey! You found this booklet interesting? Support Converting Colors with the new Membership Option!

The pro membership hides all ads, plus gives you double the colors in the color bucket, and more awesome pro features!

[Learn more, Memberships starting at \\$2.50/m!](#)

**Follow me
on Twitter!**

@ConvertingColor