

Converting Colors

Decimal(14709136)

Have a look what the booklet for
Decimal(14709136) contains.

| | |
|--|----|
| Decimal(14709136) | 3 |
| <i>Conversions</i> | 4 |
| <i>Details</i> | 6 |
| <i>Harmonies</i> | 11 |
| <i>Previews</i> | 23 |
| <i>Color Blindness Simulation</i> | 26 |
| <i>CSS Examples</i> | 29 |

Color

Decimal(14709136)

Conversions

Conversions Part 1

| Format | Color |
|-------------|----------------------------|
| Hex | E07190 |
| RGB | 224, 113, 144 |
| RGB Percent | 88%, 44%, 56% |
| CMY | 0.1216, 0.5569, 0.4353 |
| CMYK | 0.00, 0.50, 0.36, 0.12 |
| HSL | 343°, 64%, 66% |
| HSV | 343°, 50%, 88% |
| XYZ | 41.6796, 29.6712, 29.9159 |
| YIQ | 149.7230, 56.2050, 33.1730 |

Conversions

Conversions Part 2

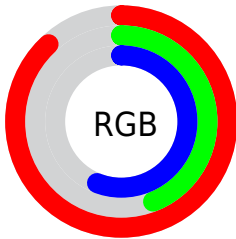
| Format | Color |
|-------------------------------------|-------------------------------|
| R_{YB} | 224, 113, 144 |
| Decimal | 14709136 |
| CIE _{Lab} | 61.37, 46.38, 3.38 |
| CIE _{LCh} | 61, 46.501, 4.163 |
| Yxy | 29.6712, 0.4116, 0.2930 |
| Android (android.graphics.Color) | 4292899216 (0xFFE07190) |
| YUV | 149.7230, -2.8214, 65.1409 |
| Hunter-Lab | 54.4712, 41.2578, 5.5675 |

Details

The Decimal color **14709136** is a light color, and the websafe version is hex **CC6699**. A complement of this color would be **7463105**, and the grayscale version is **9868950**.

A 20% lighter version of the original color is **16754630**, and **10894430** is the 20% darker color. If you saturate the color by 10%, you get **14703488**, and if you desaturate by 10%, it is **14714784**.

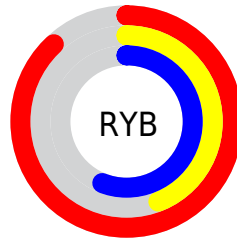
Distribution



Red (88%)

Green (44%)

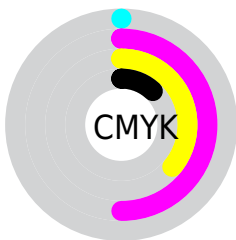
Blue (56%)



Red (88%)

Yellow (44%)

Blue (56%)

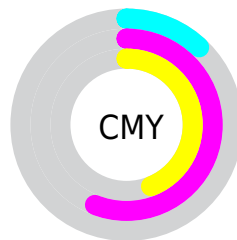


Cyan (0%)

Magenta (50%)

Yellow (36%)

Black (12%)



Cyan (12%)

Magenta (56%)

Yellow (44%)

Brightness & Saturation Gradients

These gradients show how the Decimal color 14709136 changes by changing the brightness by 10 percent. The first figure shows a shift by +10% for each color and the second figure -10%.

Similar to the brightness gradients but the following saturation gradients show a change of the Decimal color 14709136 by changing the saturation by 10% instead.

 14709136

 14709136

16777215

 12801910

 16754630

 10894430

 16761826

 8986694

 16769278

 7143472

 16776703

 5373980

 3735553

 1376256

 0

 14709136

 14709136

 14703488

 14714784

 14697584

 14720688

 14691936

 14726336

 14686031

 14732241

 14680383

 14737889

 14680127

 14743537

 14745599

Harmonies

Analogous

The Analogous color harmony consists of three colors that are next to each other on the color wheel.



13400249



14709136



14579560

Triad

The Triadic color harmony groups three colors that are evenly spaced from another and form a triangle on the color wheel.



14709136



8167245



41694

Complementary

The Complementary color scheme is a pair of colors which are on the opposite of each other on the color wheel.



14709136



7463105

Split Complementary

Split-complementary colors differ from the complementary color scheme. The scheme consists of three colors, the original color and two neighbors of the complement color.



43201



14709136



4433519

Square

The Square scheme is like the rectangle color scheme, but the four colors are evenly spaced on the color wheel.



14709136



10982463



43417



5609446

Rectangle

The Rectangle color scheme consists of four colors that form a rectangle on the color wheel.



14709136



13729874



43417



42198

Sweetspot

The Sweet Spot groups the original color and five complimentary colors.



14709136



16767459



12677600



8415599



0



8421504

Same Dimension

The Same Dimension uses a secret algorithm to generate beautiful new colors.



14709136



16738707



14715249



7365992



11534385



3145742

Inverse Universe

The Inverse Universe completely reimagines the original color for something new.



14709136



16738707



7456992



7365992



11534385



3145742

Previews

White Background



This preview shows how the Decimal color 14709136 looks on a white background.

Color Contrast Check

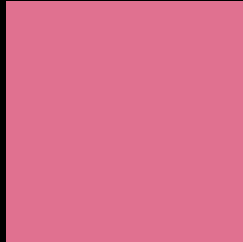
Large Text (above 18pt) WCAG AA ✓ Pass

Any Text WCAG AA ✗ Fail

Large Text (above 18pt) WCAG AAA ✗ Fail

Any Text WCAG AAA ✗ Fail

Black Background



This preview shows how the Decimal color 14709136 looks on a black background.

Color Contrast Check

Large Text (above 18pt) WCAG AA ✓ Pass

Any Text WCAG AA ✓ Pass

Large Text (above 18pt) WCAG AAA ✓ Pass

Any Text WCAG AAA × Fail

If you want to check with other color combinations, try the [Color Contrast Checker](#).

Decimal 14709136 Background



This preview shows how black text looks on a background with the Decimal color 14709136.

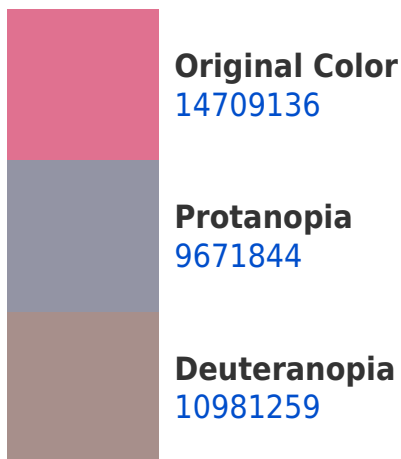



This preview shows how white text looks on a background with the Decimal color 14709136.

Color Blindness Simulation

Color vision deficiency is a very complex topic, and I could not describe the different causes any better than Wikipedia does, so if you want to learn more, you should check out their [article about color blindness](#).

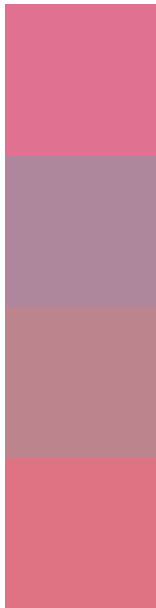
Dichromacy





Tritanopia
14578813

Trichromacy



Original Color
14709136

Protanomaly
11503517

Deuteranomaly
12354701

Tritanomaly
14644100

Monochromacy



Original Color
14709136

Achromatopsia
9868950

Achromatomaly
11635092

CSS Examples

Text

The CSS property to change the color of the text to Decimal 14709136 is called "color". The color property can be set on classes, ids or directly on the HTML element.

This example shows how text in the color #E07190 looks like.

```
.text, #text, p{  
    color:#E07190  
}
```

If you want to add a text shadow in that color use the text-shadow property, you can generate a text shadow directly with our [CSS Text Shadow Generator](#).

Here you see how black text with a 4 pixel #E07190 colored shadow looks like.

```
.shadow{ text-shadow: 4px 4px 2px #E07190
}
```

Border

The CSS property to change the border of an element to Decimal 14709136 is called "border". The border property can be set on classes, ids or directly on the HTML element.

This example shows the color as border, it can be applied via the CSS property "border" or "border-color".

```
.border, #border, table{ border:4px solid
#E07190 }
```

If only the border color should be changed use the property `border-color`.

```
.border{ border-color:#E07190 }
```

If you want to add a box shadow in that color use:

Here you see how a box with a 4 pixel #E07190 colored shadow looks like.

```
.boxshadow{ -moz-box-shadow:4px 4px 4px  
4px #E07190; -webkit-box-shadow:4px 4px  
4px 4px #E07190; box-shadow:4px 4px 4px  
4px #E07190 }
```

Background

The CSS property to change the background color of an element to Decimal 14709136 is called "background". The background property can be set on classes, ids or directly on the HTML element.

```
.background, #background, body{  
background:#E07190 }
```

If only the background color should be changed can be used:

```
.background{ background-color:#E07190 }
```

This example shows the color as background, it is applied via the CSS property "background".

To optimize and compress your CSS code, you can use our [online CSS compressor and optimizer](#) based on csstidy. If you want to create a linear or radial gradient as background or border, check our [CSS Gradient Generator](#).

Hey! You found this booklet interesting? Support Converting Colors with the new Membership Option!

The pro membership hides all ads, plus gives you double the colors in the color bucket, and more awesome pro features!

[Learn more, Memberships starting at \\$2.50/m!](#)

**Follow me
on Twitter!**

@ConvertingColor