

Converting Colors

Decimal(14709632)

Have a look what the booklet for
Decimal(14709632) contains.

Decimal(14709632)	3
<i>Conversions</i>	4
<i>Details</i>	6
<i>Harmonies</i>	11
<i>Previews</i>	23
<i>Color Blindness Simulation</i>	26
<i>CSS Examples</i>	29

Color

Decimal(14709632)

Conversions

Conversions Part 1

Format	Color
Hex	E07380
RGB	224, 115, 128
RGB Percent	88%, 45%, 50%
CMY	0.1216, 0.5490, 0.4980
CMYK	0.00, 0.49, 0.43, 0.12
HSL	353°, 64%, 66%
HSV	353°, 49%, 88%
XYZ	40.7675, 29.6673, 23.9997
YIQ	149.0730, 60.7910, 27.1510

Conversions

Conversions Part 2

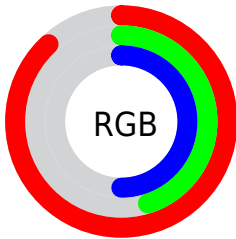
Format	Color
R_{YB}	224, 115, 128
Decimal	14709632
CIE _{Lab}	61.37, 43.60, 12.58
CIE _{LCh}	61, 45.379, 16.091
Yxy	29.6673, 0.4317, 0.3142
Android (android.graphics.Color)	4292899712 (0xFFE07380)
YUV	149.0730, -10.3890, 65.7110
Hunter-Lab	54.4677, 38.2837, 12.0028

Details

The Decimal color **14709632** is a light color, and the websafe version is hex **CC6666**. A complement of this color would be **7594195**, and the grayscale version is **9803157**.

A 20% lighter version of the original color is **16755125**, and **10829647** is the 20% darker color. If you saturate the color by 10%, you get **14703980**, and if you desaturate by 10%, it is **14715284**.

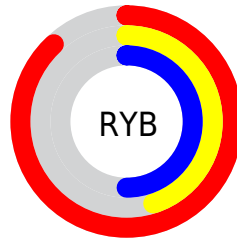
Distribution



Red (88%)

Green (45%)

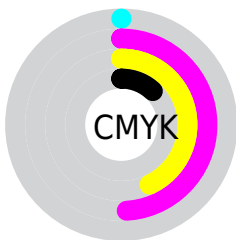
Blue (50%)



Red (88%)

Yellow (45%)

Blue (50%)

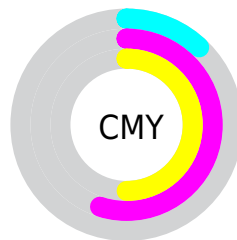


Cyan (0%)

Magenta (49%)

Yellow (43%)

Black (12%)



Cyan (12%)

Magenta (55%)

Yellow (50%)

Brightness & Saturation Gradients

These gradients show how the Decimal color 14709632 changes by changing the brightness by 10 percent. The first figure shows a shift by +10% for each color and the second figure -10%.

Similar to the brightness gradients but the following saturation gradients show a change of the Decimal color 14709632 by changing the saturation by 10% instead.

 14709632

 14709632

16777215

 12736871

 16755125

 10829647

 16762320

 8922168

 16769772

 7078179

 5308430

 3604481

 1048576

 0

 14709632

 14709632

 14703980

 14715284

 14698073

 14721191

 14692421

 14726843

 14686513

 14732751

 14680861

 14738403

 14680091

 14744054

 14745599

Harmonies

Analogous

The Analogous color harmony consists of three colors that are next to each other on the color wheel.



13989289



14709632



14056796

Triad

The Triadic color harmony groups three colors that are evenly spaced from another and form a triangle on the color wheel.



14709632



6922842



40674

Complementary

The Complementary color scheme is a pair of colors which are on the opposite of each other on the color wheel.



14709632



7594195

Split Complementary

Split-complementary colors differ from the complementary color scheme. The scheme consists of three colors, the original color and two neighbors of the complement color.



42701



14709632



2336640

Square

The Square scheme is like the rectangle color scheme, but the four colors are evenly spaced on the color wheel.



14709632



9935172



43433



7901665

Rectangle

The Rectangle color scheme consists of four colors that form a rectangle on the color wheel.



14709632



13010507



43433



41437

Sweetspot

The Sweet Spot groups the original color and five complimentary colors.



14709632



16767453



13726688



8415595



0



8421504

Same Dimension

The Same Dimension uses a secret algorithm to generate beautiful new colors.



14709632



16739197



14719859



7365990



11534357



3145734

Inverse Universe

The Inverse Universe completely reimagines the original color for something new.



14709632



16739197



7583968



7365990



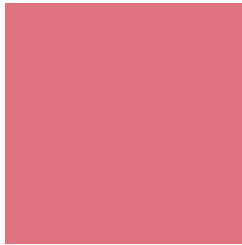
11534357



3145734

Previews

White Background



This preview shows how the Decimal color 14709632 looks on a white background.

Color Contrast Check

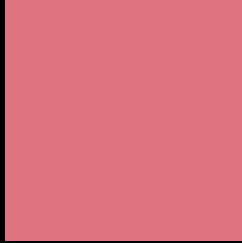
Large Text (above 18pt) WCAG AA ✓ Pass

Any Text WCAG AA × Fail

Large Text (above 18pt) WCAG AAA × Fail

Any Text WCAG AAA × Fail

Black Background



This preview shows how the Decimal color 14709632 looks on a black background.

Color Contrast Check

Large Text (above 18pt) WCAG AA ✓ Pass

Any Text WCAG AA ✓ Pass

Large Text (above 18pt) WCAG AAA ✓ Pass

Any Text WCAG AAA × Fail

If you want to check with other color combinations, try the [Color Contrast Checker](#).

Decimal 14709632 Background



This preview shows how black text looks on a background with the Decimal color 14709632.

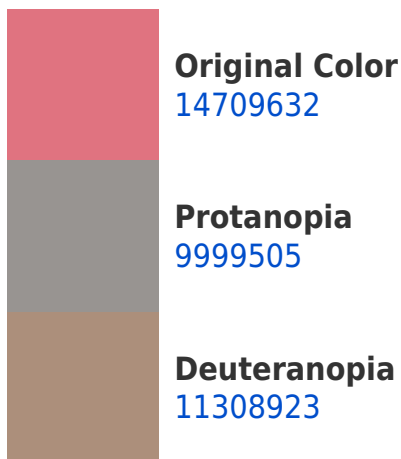


This preview shows how white text looks on a background with the Decimal color 14709632.

Color Blindness Simulation

Color vision deficiency is a very complex topic, and I could not describe the different causes any better than Wikipedia does, so if you want to learn more, you should check out their [article about color blindness](#).

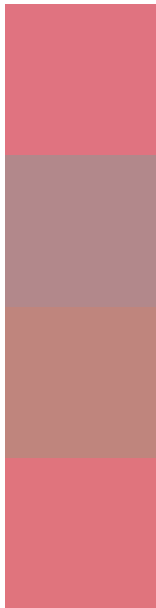
Dichromacy





Tritanopia
14709884

Trichromacy



Original Color
14709632

Protanomaly
11700363

Deuteranomaly
12551549

Tritanomaly
14709885

Monochromacy



Original Color
14709632

Achromatopsia
9803157

Achromatomaly
11569549

CSS Examples

Text

The CSS property to change the color of the text to Decimal 14709632 is called "color". The color property can be set on classes, ids or directly on the HTML element.

This example shows how text in the color #E07380 looks like.

```
.text, #text, p{  
    color:#E07380  
}
```

If you want to add a text shadow in that color use the text-shadow property, you can generate a text shadow directly with our [CSS Text Shadow Generator](#).

Here you see how black text with a 4 pixel #E07380 colored shadow looks like.

```
.shadow{ text-shadow: 4px 4px 2px #E07380
}
```

Border

The CSS property to change the border of an element to Decimal 14709632 is called "border". The border property can be set on classes, ids or directly on the HTML element.

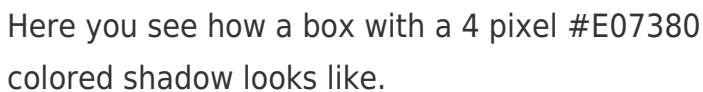
This example shows the color as border, it can be applied via the CSS property "border" or "border-color".

```
.border, #border, table{ border:4px solid
#E07380 }
```

If only the border color should be changed use the property `border-color`.

```
.border{ border-color:#E07380 }
```

If you want to add a box shadow in that color use:



Here you see how a box with a 4 pixel #E07380 colored shadow looks like.

```
.boxshadow{ -moz-box-shadow:4px 4px 4px  
4px #E07380; -webkit-box-shadow:4px 4px  
4px 4px #E07380; box-shadow:4px 4px 4px  
4px #E07380 }
```

Background

The CSS property to change the background color of an element to Decimal 14709632 is called "background". The background property can be set on classes, ids or directly on the HTML element.

```
.background, #background, body{  
background:#E07380 }
```

If only the background color should be changed can be used:

```
.background{ background-color:#E07380 }
```

This example shows the color as background, it is applied via the CSS property "background".

To optimize and compress your CSS code, you can use our [online CSS compressor and optimizer](#) based on csstidy. If you want to create a linear or radial gradient as background or border, check our [CSS Gradient Generator](#).

Hey! You found this booklet interesting? Support Converting Colors with the new Membership Option!

The pro membership hides all ads, plus gives you double the colors in the color bucket, and more awesome pro features!

[Learn more, Memberships starting at \\$2.50/m!](#)

**Follow me
on Twitter!**

@ConvertingColor