

Converting Colors

Decimal(14713489)

Have a look what the booklet for
Decimal(14713489) contains.

Decimal(14713489)	3
<i>Conversions</i>	4
<i>Details</i>	6
<i>Harmonies</i>	11
<i>Previews</i>	23
<i>Color Blindness Simulation</i>	26
<i>CSS Examples</i>	29

Color

Decimal(14713489)

Conversions

Conversions Part 1

Format	Color
Hex	E08291
RGB	224, 130, 145
RGB Percent	88%, 51%, 57%
CMY	0.1216, 0.4902, 0.4314
CMYK	0.00, 0.42, 0.35, 0.12
HSL	350°, 60%, 69%
HSV	350°, 42%, 88%
XYZ	43.8339, 33.8569, 31.0128
YIQ	159.8160, 51.2090, 24.5930

Conversions

Conversions Part 2

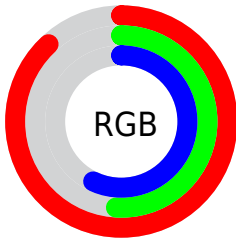
Format	Color
R_{YB}	224, 130, 145
Decimal	14713489
CIE _{Lab}	64.85, 37.82, 7.80
CIE _{LCh}	65, 38.613, 11.661
Yxy	33.8569, 0.4032, 0.3115
Android (android.graphics.Color)	4292903569 (0xFFE08291)
YUV	159.8160, -7.3043, 56.2894
Hunter-Lab	58.1867, 32.6432, 9.1298

Details

The Decimal color **14713489** is a light color, and the websafe version is hex **FF9999**. A complement of this color would be **8577233**, and the grayscale version is **10526880**.

A 20% lighter version of the original color is **16758983**, and **10899039** is the 20% darker color. If you saturate the color by 10%, you get **14707838**, and if you desaturate by 10%, it is **14719140**.

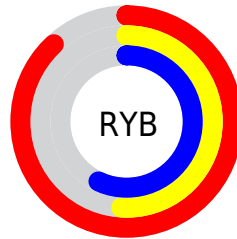
Distribution



Red (88%)

Green (51%)

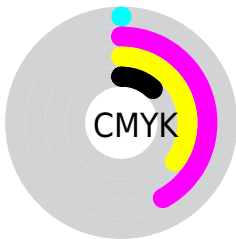
Blue (57%)



Red (88%)

Yellow (51%)

Blue (57%)

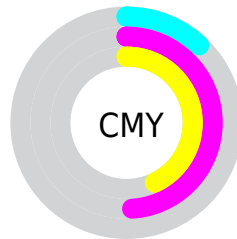


Cyan (0%)

Magenta (42%)

Yellow (35%)

Black (12%)



Cyan (12%)

Magenta (49%)

Yellow (43%)

Brightness & Saturation Gradients

These gradients show how the Decimal color 14713489 changes by changing the brightness by 10 percent. The first figure shows a shift by +10% for each color and the second figure -10%.

Similar to the brightness gradients but the following saturation gradients show a change of the Decimal color 14713489 by changing the saturation by 10% instead.

 14713489

 14713489

16777215

 12806263


 16758983

 10899039

 16766179

 9057607

 16773631

 7215921

 5439516

 3801089

 1900545

 0

 14713489

 14713489

 14707838

 14719140

 14701931

 14725047

 14696281

 14730697

 14690374

 14736604

 14684723

 14742255

 14680100

 14745599

Harmonies

Analogous

The Analogous color harmony consists of three colors that are next to each other on the color wheel.



13862324



14713489



14321777

Triad

The Triadic color harmony groups three colors that are evenly spaced from another and form a triangle on the color wheel.



14713489



8431976



4040670

Complementary

The Complementary color scheme is a pair of colors which are on the opposite of each other on the color wheel.



14713489



8577233

Split Complementary

Split-complementary colors differ from the complementary color scheme. The scheme consists of three colors, the original color and two neighbors of the complement color.



44490



14713489



5484166

Square

The Square scheme is like the rectangle color scheme, but the four colors are evenly spaced on the color wheel.



14713489



10920024



438442



8428769

Rectangle

The Rectangle color scheme consists of four colors that form a rectangle on the color wheel.



14713489



13537377



438442



2009817

Sweetspot

The Sweet Spot groups the original color and five complimentary colors.



14713489



16768739



13664992



8416110



0



8421504

Same Dimension

The Same Dimension uses a secret algorithm to generate beautiful new colors.



14713489



16744596



14721410



7365991



11534364



3145736

Inverse Universe

The Inverse Universe completely reimagines the original color for something new.



14713489



16744596



8569312



7365991



11534364



3145736

Previews

White Background



This preview shows how the Decimal color 14713489 looks on a white background.

Color Contrast Check

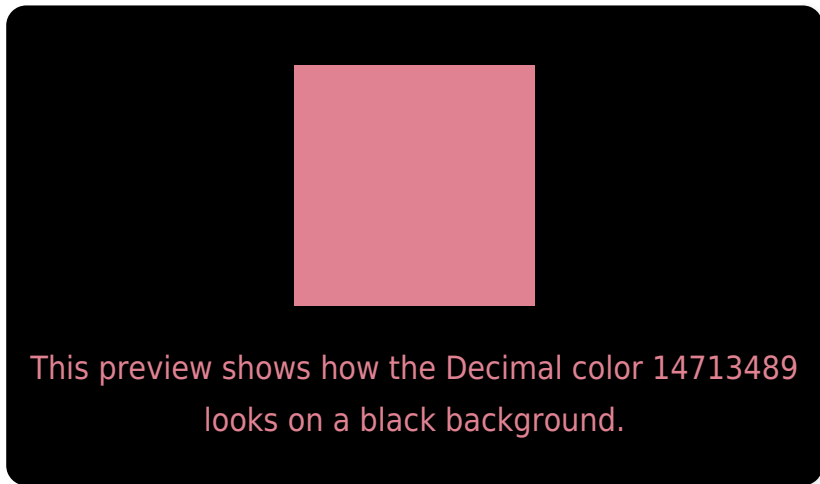
Large Text (above 18pt) WCAG AA × Fail

Any Text WCAG AA × Fail

Large Text (above 18pt) WCAG AAA × Fail

Any Text WCAG AAA × Fail

Black Background



Color Contrast Check

Large Text (above 18pt) WCAG AA ✓ Pass

Any Text WCAG AA ✓ Pass

Large Text (above 18pt) WCAG AAA ✓ Pass

Any Text WCAG AAA ✓ Pass

If you want to check with other color combinations, try the [Color Contrast Checker](#).

Decimal 14713489 Background



This preview shows how black text looks on a background with the Decimal color 14713489.



This preview shows how white text looks on a background with the Decimal color 14713489.

Color Blindness Simulation

Color vision deficiency is a very complex topic, and I could not describe the different causes any better than Wikipedia does, so if you want to learn more, you should check out their [article about color blindness](#).

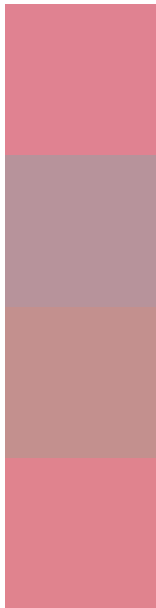
Dichromacy





Tritanopia
14713740

Trichromacy



Original Color
14713489

Protanomaly
12030875

Deuteranomaly
12816526

Tritanomaly
14713742

Monochromacy



Original Color
14713489

Achromatopsia
10526880

Achromatomaly
12031387

CSS Examples

Text

The CSS property to change the color of the text to Decimal 14713489 is called "color". The color property can be set on classes, ids or directly on the HTML element.

This example shows how text in the color #E08291 looks like.

```
.text, #text, p{  
    color:#E08291  
}
```

If you want to add a text shadow in that color use the text-shadow property, you can generate a text shadow directly with our [CSS Text Shadow Generator](#).

Here you see how black text with a 4 pixel #E08291 colored shadow looks like.

```
.shadow{ text-shadow: 4px 4px 2px #E08291
}
```

Border

The CSS property to change the border of an element to Decimal 14713489 is called "border". The border property can be set on classes, ids or directly on the HTML element.

This example shows the color as border, it can be applied via the CSS property "border" or "border-color".

```
.border, #border, table{ border:4px solid
#E08291 }
```

If only the border color should be changed use the property `border-color`.

```
.border{ border-color:#E08291 }
```

If you want to add a box shadow in that color use:

Here you see how a box with a 4 pixel #E08291 colored shadow looks like.

```
.boxshadow{ -moz-box-shadow:4px 4px 4px  
4px #E08291; -webkit-box-shadow:4px 4px  
4px 4px #E08291; box-shadow:4px 4px 4px  
4px #E08291 }
```

Background

The CSS property to change the background color of an element to Decimal 14713489 is called "background". The background property can be set on classes, ids or directly on the HTML element.

```
.background, #background, body{  
background:#E08291 }
```

If only the background color should be changed can be used:

```
.background{ background-color:#E08291 }
```

This example shows the color as background, it is applied via the CSS property "background".

To optimize and compress your CSS code, you can use our [online CSS compressor and optimizer](#) based on csstidy. If you want to create a linear or radial gradient as background or border, check our [CSS Gradient Generator](#).

Hey! You found this booklet interesting? Support Converting Colors with the new Membership Option!

The pro membership hides all ads, plus gives you double the colors in the color bucket, and more awesome pro features!

[Learn more, Memberships starting at \\$2.50/m!](#)

**Follow me
on Twitter!**

@ConvertingColor