

Converting Colors

Decimal(14714260)

Have a look what the booklet for
Decimal(14714260) contains.

Decimal(14714260)	3
<i>Conversions</i>	4
<i>Details</i>	6
<i>Harmonies</i>	11
<i>Previews</i>	23
<i>Color Blindness Simulation</i>	26
<i>CSS Examples</i>	29

Color

Decimal(14714260)

Conversions

Conversions Part 1

Format	Color
Hex	E08594
RGB	224, 133, 148
RGB Percent	88%, 52%, 58%
CMY	0.1216, 0.4784, 0.4196
CMYK	0.00, 0.41, 0.34, 0.12
HSL	350°, 59%, 70%
HSV	350°, 41%, 88%
XYZ	44.4733, 34.7605, 32.3824
YIQ	161.9190, 49.4210, 23.9570

Conversions

Conversions Part 2

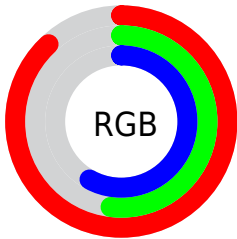
Format	Color
R_{YB}	224, 133, 148
Decimal	14714260
CIE Lab	65.56, 36.61, 7.12
CIE LCh	66, 37.299, 11.011
Yxy	34.7605, 0.3984, 0.3114
Android (android.graphics.Color)	4292904340 (0xFFE08594)
YUV	161.9190, -6.8621, 54.4450
Hunter-Lab	58.9580, 31.4699, 8.7058

Details

The Decimal color **14714260** is a light color, and the websafe version is hex **FF9999**. A complement of this color would be **8773841**, and the grayscale version is **10658466**.

A 20% lighter version of the original color is **16759754**, and **10899809** is the 20% darker color. If you saturate the color by 10%, you get **14708609**, and if you desaturate by 10%, it is **14719911**.

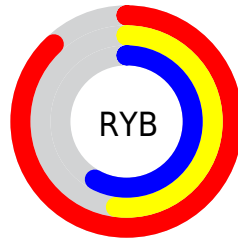
Distribution



Red (88%)

Green (52%)

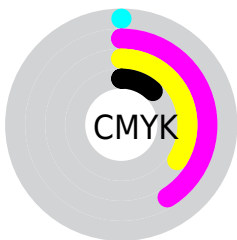
Blue (58%)



Red (88%)

Yellow (52%)

Blue (58%)

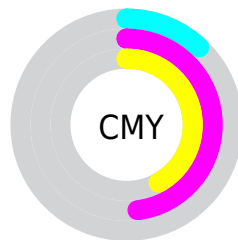


Cyan (0%)

Magenta (41%)

Yellow (34%)

Black (12%)



Cyan (12%)

Magenta (48%)

Yellow (42%)

Brightness & Saturation Gradients

These gradients show how the Decimal color 14714260 changes by changing the brightness by 10 percent. The first figure shows a shift by +10% for each color and the second figure -10%.

Similar to the brightness gradients but the following saturation gradients show a change of the Decimal color 14714260 by changing the saturation by 10% instead.

 14714260

 14714260

16777215

 12807034

 16759754

 10899809

 16767206

 9058378

 16774399

 7282483

 5505566

 3866629

 2031617

 0

 14714260

 14714260

 14708609

 14719911

 14702703

 14725817

 14697052

 14731468

 14691145

 14737375

 14685494

 14743026

 14680101

 14745599

Harmonies

Analogous

The Analogous color harmony consists of three colors that are next to each other on the color wheel.



13863094



14714260



14388085

Triad

The Triadic color harmony groups three colors that are evenly spaced from another and form a triangle on the color wheel.



14714260



8694380



4565470

Complementary

The Complementary color scheme is a pair of colors which are on the opposite of each other on the color wheel.



14714260



8773841

Split Complementary

Split-complementary colors differ from the complementary color scheme. The scheme consists of three colors, the original color and two neighbors of the complement color.



45002



14714260



5943176

Square

The Square scheme is like the rectangle color scheme, but the four colors are evenly spaced on the color wheel.



14714260



11116893



2339243



8560353

Rectangle

The Rectangle color scheme consists of four colors that form a rectangle on the color wheel.



14714260



13603430



2339243



2993113

Sweetspot

The Sweet Spot groups the original color and five complimentary colors.



14714260



16769253



13731296



8416881



0



8421504

Same Dimension

The Same Dimension uses a secret algorithm to generate beautiful new colors.



14714260



16745111



14721925



7365991



11534365



3145736

Inverse Universe

The Inverse Universe completely reimagines the original color for something new.



14714260



16745111



8766176



7365991



11534365



3145736

Previews

White Background



This preview shows how the Decimal color 14714260 looks on a white background.

Color Contrast Check

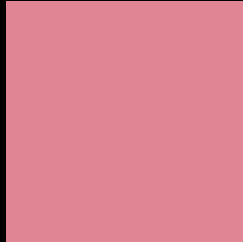
Large Text (above 18pt) WCAG AA × Fail

Any Text WCAG AA × Fail

Large Text (above 18pt) WCAG AAA × Fail

Any Text WCAG AAA × Fail

Black Background



This preview shows how the Decimal color 14714260 looks on a black background.

Color Contrast Check

Large Text (above 18pt) WCAG AA ✓ Pass

Any Text WCAG AA ✓ Pass

Large Text (above 18pt) WCAG AAA ✓ Pass

Any Text WCAG AAA ✓ Pass

If you want to check with other color combinations, try the [Color Contrast Checker](#).

Decimal 14714260 Background



This preview shows how black text looks on a background with the Decimal color 14714260.

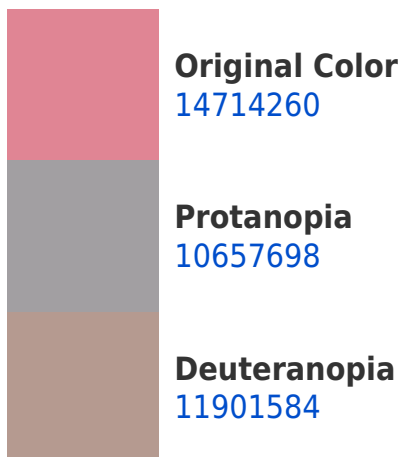



This preview shows how white text looks on a background with the Decimal color 14714260.

Color Blindness Simulation

Color vision deficiency is a very complex topic, and I could not describe the different causes any better than Wikipedia does, so if you want to learn more, you should check out their [article about color blindness](#).

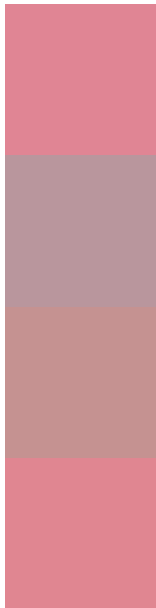
Dichromacy





Tritanopia
14714512

Trichromacy



Original Color
14714260

Protanomaly
12162717

Deuteranomaly
12948113

Tritanomaly
14714513

Monochromacy



Original Color
14714260

Achromatopsia
10658466

Achromatomaly
12162973

CSS Examples

Text

The CSS property to change the color of the text to Decimal 14714260 is called "color". The color property can be set on classes, ids or directly on the HTML element.

This example shows how text in the color #E08594 looks like.

```
.text, #text, p{  
    color:#E08594  
}
```

If you want to add a text shadow in that color use the text-shadow property, you can generate a text shadow directly with our [CSS Text Shadow Generator](#).

Here you see how black text with a 4 pixel #E08594 colored shadow looks like.

```
.shadow{ text-shadow: 4px 4px 2px #E08594
}
```

Border

The CSS property to change the border of an element to Decimal 14714260 is called "border". The border property can be set on classes, ids or directly on the HTML element.

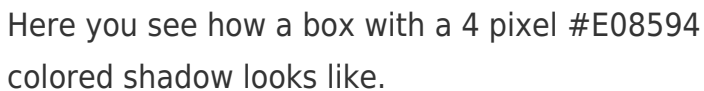
This example shows the color as border, it can be applied via the CSS property "border" or "border-color".

```
.border, #border, table{ border:4px solid
#E08594 }
```

If only the border color should be changed use the property border-color.

```
.border{ border-color:#E08594 }
```

If you want to add a box shadow in that color use:



Here you see how a box with a 4 pixel #E08594 colored shadow looks like.

```
.boxshadow{ -moz-box-shadow:4px 4px 4px  
4px #E08594; -webkit-box-shadow:4px 4px  
4px 4px #E08594; box-shadow:4px 4px 4px  
4px #E08594 }
```

Background

The CSS property to change the background color of an element to Decimal 14714260 is called "background". The background property can be set on classes, ids or directly on the HTML element.

```
.background, #background, body{  
background:#E08594 }
```

If only the background color should be changed can be used:

```
.background{ background-color:#E08594 }
```

This example shows the color as background, it is applied via the CSS property "background".

To optimize and compress your CSS code, you can use our [online CSS compressor and optimizer](#) based on csstidy. If you want to create a linear or radial gradient as background or border, check our [CSS Gradient Generator](#).

Hey! You found this booklet interesting? Support Converting Colors with the new Membership Option!

The pro membership hides all ads, plus gives you double the colors in the color bucket, and more awesome pro features!

[Learn more, Memberships starting at \\$2.50/m!](#)

**Follow me
on Twitter!**

@ConvertingColor