

Converting Colors

Decimal(14718133)

Have a look what the booklet for
Decimal(14718133) contains.

Decimal(14718133)	3
<i>Conversions</i>	4
<i>Details</i>	6
<i>Harmonies</i>	11
<i>Previews</i>	23
<i>Color Blindness Simulation</i>	26
<i>CSS Examples</i>	29

Color

Decimal(14718133)

Conversions

Conversions Part 1

Format	Color
Hex	E094B5
RGB	224, 148, 181
RGB Percent	88%, 58%, 71%
CMY	0.1216, 0.4196, 0.2902
CMYK	0.00, 0.34, 0.19, 0.12
HSL	334°, 55%, 73%
HSV	334°, 34%, 88%
XYZ	49.6709, 40.3633, 48.8890
YIQ	174.4860, 34.7030, 26.3750

Conversions

Conversions Part 2

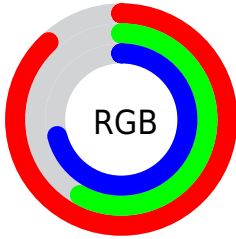
Format	Color
RYB	224, 148, 181
Decimal	14718133
CIELab	69.73, 33.22, -5.34
CIElCh	70, 33.651, 350.865
Yxy	40.3633, 0.3575, 0.2905
Android (android.graphics.Color)	4292908213 (0xFFE094B5)
YUV	174.4860, 3.2114, 43.4238
Hunter-Lab	63.5321, 28.3742, -1.1522

Details

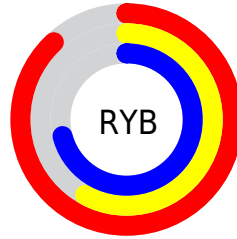
The Decimal color **14718133** is a light color, and the websafe version is hex **FF99CC**. A complement of this color would be **9756863**, and the grayscale version is **11447982**.

A 20% lighter version of the original color is **16763885**, and **10969216** is the 20% darker color. If you saturate the color by 10%, you get **14712488**, and if you desaturate by 10%, it is **14723778**.

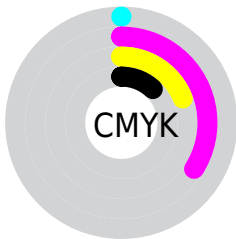
Distribution



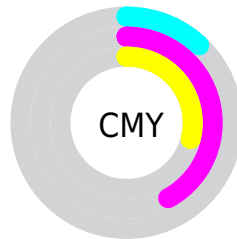
- Red (88%)
- Green (58%)
- Blue (71%)



- Red (88%)
- Yellow (58%)
- Blue (71%)



- Cyan (0%)
- Magenta (34%)
- Yellow (19%)
- Black (12%)



- Cyan (12%)
- Magenta (42%)
- Yellow (29%)

Brightness & Saturation Gradients

These gradients show how the Decimal color 14718133 changes by changing the brightness by 10 percent. The first figure shows a shift by +10% for each color and the second figure -10%.

Similar to the brightness gradients but the following saturation gradients show a change of the Decimal color 14718133 by changing the saturation by 10% instead.

 14718133

 14718133

16777215

 12810906

 16763885

 10969216

 16771071

 9193319

 7417679

 5707320

 4063267

 2818061

 0

 14718133

 14718133

 14712488

 14723778

 14706588

 14729678

 14700943

 14735323

 14695042

 14741224

 14689398

 14745588

 14683753

 14745599

 14680161

Harmonies

Analogous

The Analogous color harmony consists of three colors that are next to each other on the color wheel.



13147089



14718133



15176854

Triad

The Triadic color harmony groups three colors that are evenly spaced from another and form a triangle on the color wheel.



14718133



11120497



4700121

Complementary

The Complementary color scheme is a pair of colors which are on the opposite of each other on the color wheel.



14718133



9756863

Split Complementary

Split-complementary colors differ from the complementary color scheme. The scheme consists of three colors, the original color and two neighbors of the complement color.



4373439



14718133



8828547

Square

The Square scheme is like the rectangle color scheme, but the four colors are evenly spaced on the color wheel.



14718133



13149550



6404768



7516390

Rectangle

The Rectangle color scheme consists of four colors that form a rectangle on the color wheel.



14718133



14850180



6404768



4241873

Sweetspot

The Sweet Spot groups the original color and five complimentary colors.



14718133



16770801



12489952



8417399



0



8421504

Same Dimension

The Same Dimension uses a secret algorithm to generate beautiful new colors.



14718133



16750276



14719124



7365994



11534412



3145749

Inverse Universe

The Inverse Universe completely reimagines the original color for something new.



14718133



16750276



9755872



7365994



11534412



3145749

Previews

White Background



This preview shows how the Decimal color 14718133 looks on a white background.

Color Contrast Check

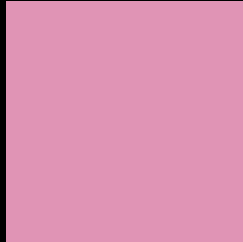
Large Text (above 18pt) WCAG AA × Fail

Any Text WCAG AA × Fail

Large Text (above 18pt) WCAG AAA × Fail

Any Text WCAG AAA × Fail

Black Background



This preview shows how the Decimal color 14718133 looks on a black background.

Color Contrast Check

Large Text (above 18pt) WCAG AA ✓ Pass

Any Text WCAG AA ✓ Pass

Large Text (above 18pt) WCAG AAA ✓ Pass

Any Text WCAG AAA ✓ Pass

If you want to check with other color combinations, try the [Color Contrast Checker](#).

Decimal 14718133 Background



This preview shows how black text looks on a background with the Decimal color 14718133.




This preview shows how white text looks on a background with the Decimal color 14718133.

Color Blindness Simulation

Color vision deficiency is a very complex topic, and I could not describe the different causes any better than Wikipedia does, so if you want to learn more, you should check out their [article about color blindness](#).

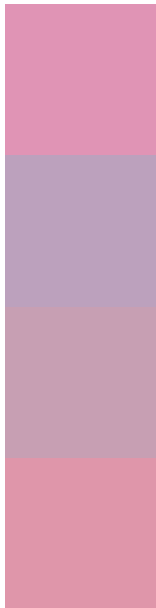
Dichromacy





Tritanopia
14587811

Trichromacy



Original Color
14718133

Protanomaly
12362173

Deuteranomaly
13082547

Tritanomaly
14653098

Monochromacy



Original Color
14718133

Achromatopsia
11447982

Achromatomaly
12625329

CSS Examples

Text

The CSS property to change the color of the text to Decimal 14718133 is called "color". The color property can be set on classes, ids or directly on the HTML element.

This example shows how text in the color #E094B5 looks like.

```
.text, #text, p{  
    color:#E094B5  
}
```

If you want to add a text shadow in that color use the text-shadow property, you can generate a text shadow directly with our [CSS Text Shadow Generator](#).

Here you see how black text with a 4 pixel #E094B5 colored shadow looks like.

```
.shadow{ text-shadow: 4px 4px 2px #E094B5
}
```

Border

The CSS property to change the border of an element to Decimal 14718133 is called "border". The border property can be set on classes, ids or directly on the HTML element.

This example shows the color as border, it can be applied via the CSS property "border" or "border-color".

```
.border, #border, table{ border:4px solid
#E094B5 }
```

If only the border color should be changed use the property `border-color`.

```
.border{ border-color:#E094B5 }
```

If you want to add a box shadow in that color use:

Here you see how a box with a 4 pixel #E094B5 colored shadow looks like.

```
.boxshadow{ -moz-box-shadow:4px 4px 4px  
4px #E094B5; -webkit-box-shadow:4px 4px  
4px 4px #E094B5; box-shadow:4px 4px 4px  
4px #E094B5 }
```

Background

The CSS property to change the background color of an element to Decimal 14718133 is called "background". The background property can be set on classes, ids or directly on the HTML element.

```
.background, #background, body{  
background:#E094B5 }
```

If only the background color should be changed can be used:

```
.background{ background-color:#E094B5 }
```

This example shows the color as background, it is applied via the CSS property "background".

To optimize and compress your CSS code, you can use our [online CSS compressor and optimizer](#) based on csstidy. If you want to create a linear or radial gradient as background or border, check our [CSS Gradient Generator](#).

Hey! You found this booklet interesting? Support Converting Colors with the new Membership Option!

The pro membership hides all ads, plus gives you double the colors in the color bucket, and more awesome pro features!

[Learn more, Memberships starting at \\$2.50/m!](#)

**Follow me
on Twitter!**

@ConvertingColor