

Converting Colors

Decimal(14721969)

Have a look what the booklet for
Decimal(14721969) contains.

Decimal(14721969)	3
<i>Conversions</i>	4
<i>Details</i>	6
<i>Harmonies</i>	11
<i>Previews</i>	23
<i>Color Blindness Simulation</i>	26
<i>CSS Examples</i>	29

Color

Decimal(14721969)

Conversions

Conversions Part 1

Format	Color
Hex	E0A3B1
RGB	224, 163, 177
RGB Percent	88%, 64%, 69%
CMY	0.1216, 0.3608, 0.3059
CMYK	0.00, 0.27, 0.21, 0.12
HSL	346°, 50%, 76%
HSV	346°, 27%, 88%
XYZ	51.7735, 45.2160, 47.5938
YIQ	182.8350, 31.8620, 17.2860

Conversions

Conversions Part 2

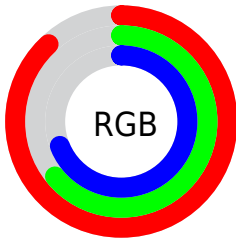
Format	Color
R_{YB}	224, 163, 177
Decimal	14721969
CIE _{Lab}	73.03, 24.58, 1.72
CIE _{LCh}	73, 24.638, 4.009
Yxy	45.2160, 0.3581, 0.3127
Android (android.graphics.Color)	4292912049 (0xFFE0A3B1)
YUV	182.8350, -2.8767, 36.1017
Hunter-Lab	67.2428, 19.7607, 5.1052

Details

The Decimal color **14721969** is a light color, and the websafe version is hex **CC9999**. A complement of this color would be **10739922**, and the grayscale version is **12040119**.

A 20% lighter version of the original color is **16767721**, and **11038589** is the 20% darker color. If you saturate the color by 10%, you get **14716320**, and if you desaturate by 10%, it is **14727618**.

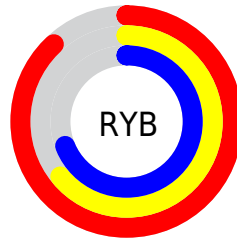
Distribution



Red (88%)

Green (64%)

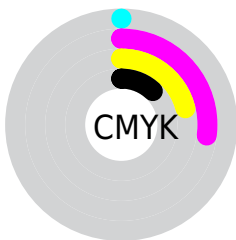
Blue (69%)



Red (88%)

Yellow (64%)

Blue (69%)

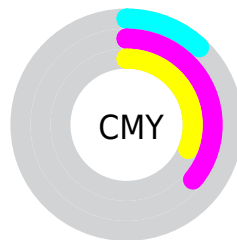


Cyan (0%)

Magenta (27%)

Yellow (21%)

Black (12%)



Cyan (12%)

Magenta (36%)

Yellow (31%)

Brightness & Saturation Gradients

These gradients show how the Decimal color 14721969 changes by changing the brightness by 10 percent. The first figure shows a shift by +10% for each color and the second figure -10%.

Similar to the brightness gradients but the following saturation gradients show a change of the Decimal color 14721969 by changing the saturation by 10% instead.

 14721969

 14721969

16777215

 12880022

 16767721

 11038589

 16775167

 9262692

 7487052

 5842741

 4198432

 2752520

 0

 14721969

 14721969

 14716320

 14727618

 14710414

 14733524

 14704765

 14739173

 14698860

 14745078

 14693211

 14745599

 14687561

 14681656

 14680115

Harmonies

Analogous

The Analogous color harmony consists of three colors that are next to each other on the color wheel.



13870791



14721969



14722459

Triad

The Triadic color harmony groups three colors that are evenly spaced from another and form a triangle on the color wheel.



14721969



11057805



8436699

Complementary

The Complementary color scheme is a pair of colors which are on the opposite of each other on the color wheel.



14721969



10739922

Split Complementary

Split-complementary colors differ from the complementary color scheme. The scheme consists of three colors, the original color and two neighbors of the complement color.



7520204



14721969



9420447

Square

The Square scheme is like the rectangle color scheme, but the four colors are evenly spaced on the color wheel.



14721969



12694406



8044726



10269920

Rectangle

The Rectangle color scheme consists of four colors that form a rectangle on the color wheel.



14721969



14330256



8044726



7978455

Sweetspot

The Sweet Spot groups the original color and five complimentary colors.



14721969



16772079



13804512



8418166



0



8421504

Same Dimension

The Same Dimension uses a secret algorithm to generate beautiful new colors.



14721969



16755646



14726051



7365992



11534376



3145739

Inverse Universe

The Inverse Universe completely reimagines the original color for something new.



14721969



16755646



10735840



7365992



11534376



3145739

Previews

White Background



This preview shows how the Decimal color 14721969 looks on a white background.

Color Contrast Check

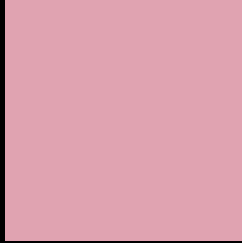
Large Text (above 18pt) WCAG AA × Fail

Any Text WCAG AA × Fail

Large Text (above 18pt) WCAG AAA × Fail

Any Text WCAG AAA × Fail

Black Background



This preview shows how the Decimal color 14721969 looks on a black background.

Color Contrast Check

Large Text (above 18pt) WCAG AA ✓ Pass

Any Text WCAG AA ✓ Pass

Large Text (above 18pt) WCAG AAA ✓ Pass

Any Text WCAG AAA ✓ Pass

If you want to check with other color combinations, try the [Color Contrast Checker](#).

Decimal 14721969 Background



This preview shows how black text looks on a background with the Decimal color 14721969.




This preview shows how white text looks on a background with the Decimal color 14721969.

Color Blindness Simulation

Color vision deficiency is a very complex topic, and I could not describe the different causes any better than Wikipedia does, so if you want to learn more, you should check out their [article about color blindness](#).

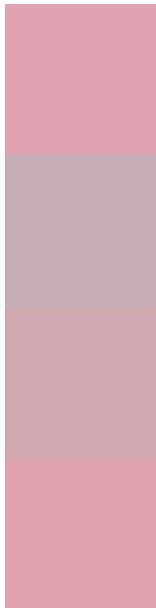
Dichromacy





Tritanopia
14721968

Trichromacy



Original Color
14721969

Protanomaly
12955063

Deuteranomaly
13675184

Tritanomaly
14721968

Monochromacy



Original Color
14721969

Achromatopsia
12040119

Achromatomaly
13021365

CSS Examples

Text

The CSS property to change the color of the text to Decimal 14721969 is called "color". The color property can be set on classes, ids or directly on the HTML element.

This example shows how text in the color #E0A3B1 looks like.

```
.text, #text, p{  
  color:#E0A3B1  
}
```

If you want to add a text shadow in that color use the text-shadow property, you can generate a text shadow directly with our [CSS Text Shadow Generator](#).

Here you see how black text with a 4 pixel #E0A3B1 colored shadow looks like.

```
.shadow{ text-shadow: 4px 4px 2px #E0A3B1
}
```

Border

The CSS property to change the border of an element to Decimal 14721969 is called "border". The border property can be set on classes, ids or directly on the HTML element.

This example shows the color as border, it can be applied via the CSS property "border" or "border-color".

```
.border, #border, table{ border:4px solid
#E0A3B1 }
```

If only the border color should be changed use the property `border-color`.

```
.border{ border-color:#E0A3B1 }
```

If you want to add a box shadow in that color use:

Here you see how a box with a 4 pixel #E0A3B1 colored shadow looks like.

```
.boxshadow{ -moz-box-shadow:4px 4px 4px  
4px #E0A3B1; -webkit-box-shadow:4px 4px  
4px 4px #E0A3B1; box-shadow:4px 4px 4px  
4px #E0A3B1 }
```

Background

The CSS property to change the background color of an element to Decimal 14721969 is called "background". The background property can be set on classes, ids or directly on the HTML element.

```
.background, #background, body{  
background:#E0A3B1 }
```

If only the background color should be changed can be used:

```
.background{ background-color:#E0A3B1 }
```

This example shows the color as background, it is applied via the CSS property "background".

To optimize and compress your CSS code, you can use our [online CSS compressor and optimizer](#) based on csstidy. If you want to create a linear or radial gradient as background or border, check our [CSS Gradient Generator](#).

Hey! You found this booklet interesting? Support Converting Colors with the new Membership Option!

The pro membership hides all ads, plus gives you double the colors in the color bucket, and more awesome pro features!

[Learn more, Memberships starting at \\$2.50/m!](#)

**Follow me
on Twitter!**

@ConvertingColor