

# Converting Colors

Decimal(14721970)

Have a look what the booklet for  
Decimal(14721970) contains.

<b>Decimal(14721970)</b> .....	3
<i><b>Conversions</b></i> .....	4
<i><b>Details</b></i> .....	6
<i><b>Harmonies</b></i> .....	11
<i><b>Previews</b></i> .....	23
<i><b>Color Blindness Simulation</b></i> .....	26
<i><b>CSS Examples</b></i> .....	29

# **Color**

**Decimal(14721970)**

# Conversions

## Conversions Part 1

Format	Color
Hex	E0A3B2
RGB	224, 163, 178
RGB Percent	88%, 64%, 70%
CMY	0.1216, 0.3608, 0.3020
CMYK	0.00, 0.27, 0.21, 0.12
HSL	345°, 50%, 76%
HSV	345°, 27%, 88%
XYZ	51.8735, 45.2560, 48.1207
YIQ	182.9490, 31.5410, 17.5970

# Conversions

## Conversions Part 2

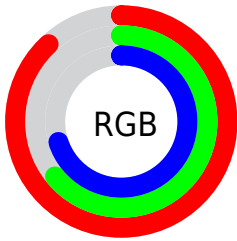
Format	Color
<a href="#">RYB</a>	<a href="#">224, 163, 178</a>
Decimal	<a href="#">14721970</a>
CIELab	<a href="#">73.06, 24.73, 1.21</a>
CIELCh	<a href="#">73, 24.757, 2.801</a>
Yxy	<a href="#">45.2560, 0.3571, 0.3116</a>
Android (android.graphics.Color)	<a href="#">4292912050</a> ( <a href="#">0xFFE0A3B2</a> )
YUV	<a href="#">182.9490, -2.4399, 36.0017</a>
Hunter-Lab	<a href="#">67.2726, 19.9133, 4.6801</a>

# Details

The Decimal color **14721970** is a light color, and the websafe version is hex **CC9999**. A complement of this color would be **10739921**, and the grayscale version is **12040119**.

A 20% lighter version of the original color is **16767722**, and **11038589** is the 20% darker color. If you saturate the color by 10%, you get **14716321**, and if you desaturate by 10%, it is **14727619**.

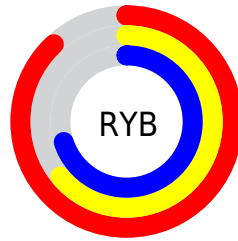
# Distribution



Red (88%)

Green (64%)

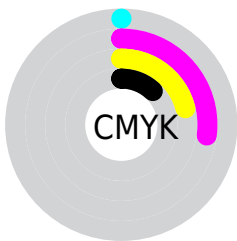
Blue (70%)



Red (88%)

Yellow (64%)

Blue (70%)

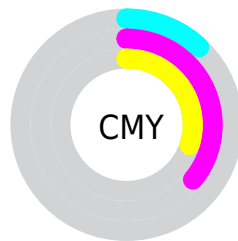


Cyan (0%)

Magenta (27%)

Yellow (21%)

Black (12%)



Cyan (12%)

Magenta (36%)

Yellow (30%)

# Brightness & Saturation Gradients

These gradients show how the Decimal color 14721970 changes by changing the brightness by 10 percent. The first figure shows a shift by +10% for each color and the second figure -10%.

Similar to the brightness gradients but the following saturation gradients show a change of the Decimal color 14721970 by changing the saturation by 10% instead.



 14721970

 14721970

16777215

 12880023

 16767722

 11038589

 16775167

 9262693

 7487053

 5842742

 4198433

 2752521

 0

 14721970

 14721970

 14716321

 14727619

 14710416

 14733524

 14704767

 14739173

 14698862

 14745078

 14693214

 14745599

 14687565

 14681660

 14680119

# Harmonies

## Analogous

The Analogous color harmony consists of three colors that are next to each other on the color wheel.



13870792



14721970



14787996

# Triad

The Triadic color harmony groups three colors that are evenly spaced from another and form a triangle on the color wheel.



14721970



11123085



8371163

# Complementary

The Complementary color scheme is a pair of colors which are on the opposite of each other on the color wheel.



14721970



10739921

# Split Complementary

Split-complementary colors differ from the complementary color scheme. The scheme consists of three colors, the original color and two neighbors of the complement color.



7520203



14721970



9420446

# Square

The Square scheme is like the rectangle color scheme, but the four colors are evenly spaced on the color wheel.



14721970



12759942



8044725



10204640

# Rectangle

The Rectangle color scheme consists of four colors that form a rectangle on the color wheel.



14721970



14395792



8044725



7912919



# Sweetspot

The Sweet Spot groups the original color and five complimentary colors.



14721970



16772080



13738976



8418166



0



8421504



# Same Dimension

The Same Dimension uses a secret algorithm to generate beautiful new colors.



14721970



16755648



14725795



7365992



11534379



3145740



# Inverse Universe

The Inverse Universe completely reimagines the original color for something new.



14721970



16755648



10736096



7365992



11534379



3145740



# Previews

## White Background



This preview shows how the Decimal color 14721970 looks on a white background.

## Color Contrast Check

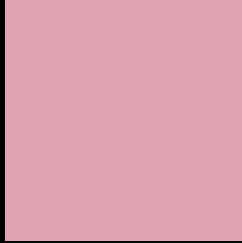
Large Text (above 18pt) WCAG AA × Fail

Any Text WCAG AA × Fail

Large Text (above 18pt) WCAG AAA × Fail

Any Text WCAG AAA × Fail

# Black Background



This preview shows how the Decimal color 14721970 looks on a black background.

## Color Contrast Check

Large Text (above 18pt) WCAG AA ✓ Pass

Any Text WCAG AA ✓ Pass

Large Text (above 18pt) WCAG AAA ✓ Pass

Any Text WCAG AAA ✓ Pass

If you want to check with other color combinations, try the [Color Contrast Checker](#).



## Decimal 14721970 Background



This preview shows how black text looks on a background with the Decimal color 14721970.




This preview shows how white text looks on a background with the Decimal color 14721970.

# Color Blindness Simulation

Color vision deficiency is a very complex topic, and I could not describe the different causes any better than Wikipedia does, so if you want to learn more, you should check out their [article about color blindness](#).

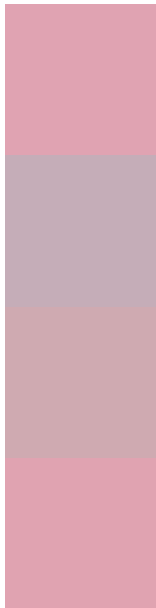
## Dichromacy





**Tritanopia**  
14721968

# Trichromacy



**Original Color**  
14721970

**Protanomaly**  
12955064

**Deuteranomaly**  
13609649

**Tritanomaly**  
14721969

# Monochromacy



**Original Color**  
14721970

**Achromatopsia**  
12040119

**Achromatomaly**  
13021365

# CSS Examples

## Text

The CSS property to change the color of the text to Decimal 14721970 is called "color". The color property can be set on classes, ids or directly on the HTML element.

This example shows how text in the color #E0A3B2 looks like.

```
.text, #text, p{  
  color:#E0A3B2  
}
```

If you want to add a text shadow in that color use the text-shadow property, you can generate a text shadow directly with our [CSS Text Shadow Generator](#).

Here you see how black text with a 4 pixel #E0A3B2 colored shadow looks like.

```
.shadow{ text-shadow: 4px 4px 2px #E0A3B2
}
```

## Border

The CSS property to change the border of an element to Decimal 14721970 is called "border". The border property can be set on classes, ids or directly on the HTML element.

This example shows the color as border, it can be applied via the CSS property "border" or "border-color".

```
.border, #border, table{ border:4px solid
#E0A3B2 }
```

If only the border color should be changed use the property `border-color`.

```
.border{ border-color:#E0A3B2 }
```

If you want to add a box shadow in that color use:

Here you see how a box with a 4 pixel #E0A3B2 colored shadow looks like.

```
.boxshadow{ -moz-box-shadow:4px 4px 4px  
4px #E0A3B2; -webkit-box-shadow:4px 4px  
4px 4px #E0A3B2; box-shadow:4px 4px 4px  
4px #E0A3B2 }
```

# Background

The CSS property to change the background color of an element to Decimal 14721970 is called "background". The background property can be set on classes, ids or directly on the HTML element.

```
.background, #background, body{  
background:#E0A3B2 }
```

If only the background color should be changed can be used:

```
.background{ background-color:#E0A3B2 }
```

This example shows the color as background, it is applied via the CSS property "background".

To optimize and compress your CSS code, you can use our [online CSS compressor and optimizer](#) based on csstidy. If you want to create a linear or radial gradient as background or border, check our [CSS Gradient Generator](#).



Hey! You found this booklet interesting? Support Converting Colors with the new Membership Option!

The pro membership hides all ads, plus gives you double the colors in the color bucket, and more awesome pro features!

**[Learn more, Memberships starting at \\$2.50/m!](#)**

**Follow me  
on Twitter!**

@ConvertingColor