

# Converting Colors

Decimal(14723773)

Have a look what the booklet for  
Decimal(14723773) contains.

<b>Decimal(14723773)</b> .....	3
<i><b>Conversions</b></i> .....	4
<i><b>Details</b></i> .....	6
<i><b>Harmonies</b></i> .....	11
<i><b>Previews</b></i> .....	23
<i><b>Color Blindness Simulation</b></i> .....	26
<i><b>CSS Examples</b></i> .....	29

# **Color**

**Decimal(14723773)**

# Conversions

## Conversions Part 1

Format	Color
Hex	E0AABD
RGB	224, 170, 189
RGB Percent	88%, 67%, 74%
CMY	0.1216, 0.3333, 0.2588
CMYK	0.00, 0.24, 0.16, 0.12
HSL	339°, 47%, 77%
HSV	339°, 24%, 88%
XYZ	54.3005, 48.2709, 54.5994
YIQ	188.3120, 26.0850, 17.3570

# Conversions

## Conversions Part 2

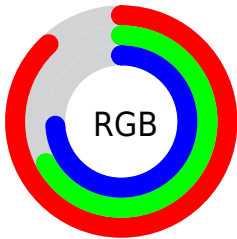
<b>Format</b>	<b>Color</b>
<b>R<sub>YB</sub></b>	224, 170, 189
Decimal	14723773
CIE Lab	75.00, 22.66, -2.00
CIE LCh	75, 22.749, 354.944
Yxy	48.2709, 0.3455, 0.3071
Android (android.graphics.Color)	4292913853 (0xFFE0AABD)
YUV	188.3120, 0.3392, 31.2984
Hunter-Lab	69.4772, 17.9230, 2.0404

# Details

The Decimal color **14723773** is a light color, and the websafe version is hex **CC9999**. A complement of this color would be **11198669**, and the grayscale version is **12369084**.

A 20% lighter version of the original color is **16769781**, and **11040136** is the 20% darker color. If you saturate the color by 10%, you get **14718126**, and if you desaturate by 10%, it is **14729420**.

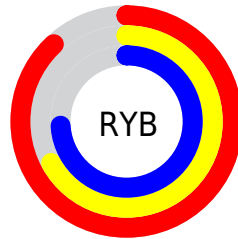
# Distribution



Red (88%)

Green (67%)

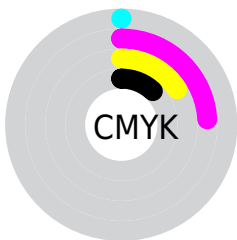
Blue (74%)



Red (88%)

Yellow (67%)

Blue (74%)

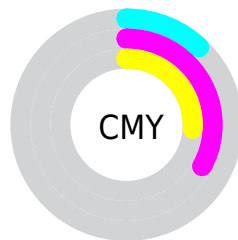


Cyan (0%)

Magenta (24%)

Yellow (16%)

Black (12%)



Cyan (12%)

Magenta (33%)

Yellow (26%)

# Brightness & Saturation Gradients

These gradients show how the Decimal color 14723773 changes by changing the brightness by 10 percent. The first figure shows a shift by +10% for each color and the second figure -10%.

Similar to the brightness gradients but the following saturation gradients show a change of the Decimal color 14723773 by changing the saturation by 10% instead.



 14723773

 14723773

16777215

 12881826

 16769781

 11040136

16776959

 9264238

 7554134

 5909823

 4265769

 2752533

 196608

 0

 14723773

 14723773

 14718126

 14729420

 14712224

 14735322

 14706577

 14740969

 14700675

 14745591

 14695028

 14745599

 14689382

 14683479

 14680143

# Harmonies

## Analogous

The Analogous color harmony consists of three colors that are next to each other on the color wheel.



13676241



14723773



14986152

# Triad

The Triadic color harmony groups three colors that are evenly spaced from another and form a triangle on the color wheel.



14723773



11976082



8765914

# Complementary

The Complementary color scheme is a pair of colors which are on the opposite of each other on the color wheel.



14723773



11198669

# Split Complementary

Split-complementary colors differ from the complementary color scheme. The scheme consists of three colors, the original color and two neighbors of the complement color.



8307913



14723773



10404512

# Square

The Square scheme is like the rectangle color scheme, but the four colors are evenly spaced on the color wheel.



14723773



13416079



9028788



10206434

# Rectangle

The Rectangle color scheme consists of four colors that form a rectangle on the color wheel.



14723773



14724508



9028788



8504277



# Sweetspot

The Sweet Spot groups the original color and five complimentary colors.



14723773



16772595



13413088



8418681



0



8421504



# Same Dimension

The Same Dimension uses a secret algorithm to generate beautiful new colors.



14723773



16758223



14725546



7365993



11534398



3145745



# Inverse Universe

The Inverse Universe completely reimagines the original color for something new.



14723773



16758223



11196896



7365993



11534398

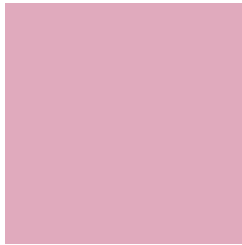


3145745



# Previews

## White Background



This preview shows how the Decimal color 14723773 looks on a white background.

## Color Contrast Check

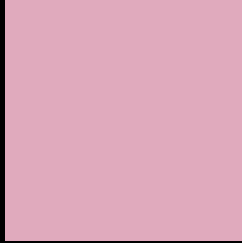
Large Text (above 18pt) WCAG AA × Fail

Any Text WCAG AA × Fail

Large Text (above 18pt) WCAG AAA × Fail

Any Text WCAG AAA × Fail

# Black Background



This preview shows how the Decimal color 14723773 looks on a black background.

## Color Contrast Check

Large Text (above 18pt) WCAG AA ✓ Pass

Any Text WCAG AA ✓ Pass

Large Text (above 18pt) WCAG AAA ✓ Pass

Any Text WCAG AAA ✓ Pass

If you want to check with other color combinations, try the [Color Contrast Checker](#).



## Decimal 14723773 Background



This preview shows how black text looks on a background with the Decimal color 14723773.

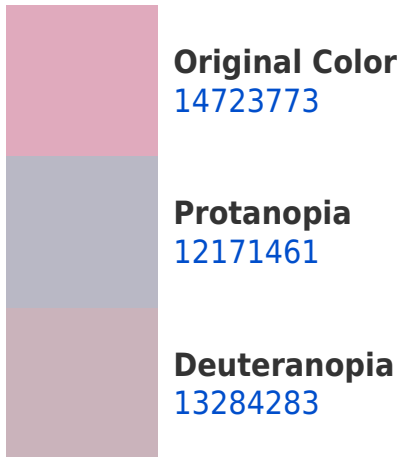



This preview shows how white text looks on a background with the Decimal color 14723773.

# Color Blindness Simulation

Color vision deficiency is a very complex topic, and I could not describe the different causes any better than Wikipedia does, so if you want to learn more, you should check out their [article about color blindness](#).

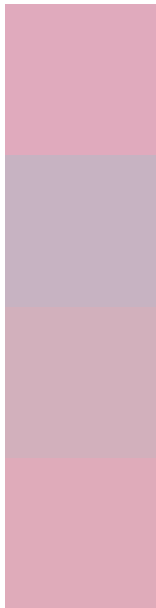
## Dichromacy





**Tritanopia**  
14658488

# Trichromacy



**Original Color**  
14723773

**Protanomaly**  
13087682

**Deuteranomaly**  
13807804

**Tritanomaly**  
14658490

# Monochromacy



**Original Color**  
14723773

**Achromatopsia**  
12369084

**Achromatomaly**  
13219260

# CSS Examples

## Text

The CSS property to change the color of the text to Decimal 14723773 is called "color". The color property can be set on classes, ids or directly on the HTML element.

This example shows how text in the color #E0AABD looks like.

```
.text, #text, p{  
    color:#E0AABD  
}
```

If you want to add a text shadow in that color use the text-shadow property, you can generate a text shadow directly with our [CSS Text Shadow Generator](#).

Here you see how black text with a 4 pixel #E0AABD colored shadow looks like.

```
.shadow{ text-shadow: 4px 4px 2px #E0AABD
}
```

## Border

The CSS property to change the border of an element to Decimal 14723773 is called "border". The border property can be set on classes, ids or directly on the HTML element.

This example shows the color as border, it can be applied via the CSS property "border" or "border-color".

```
.border, #border, table{ border:4px solid
#E0AABD }
```

If only the border color should be changed use the property `border-color`.

```
.border{ border-color:#E0AABD }
```

If you want to add a box shadow in that color use:

Here you see how a box with a 4 pixel #E0AABD colored shadow looks like.

```
.boxshadow{ -moz-box-shadow:4px 4px 4px  
4px #E0AABD; -webkit-box-shadow:4px 4px  
4px 4px #E0AABD; box-shadow:4px 4px 4px  
4px #E0AABD }
```

# Background

The CSS property to change the background color of an element to Decimal 14723773 is called "background". The background property can be set on classes, ids or directly on the HTML element.

```
.background, #background, body{  
background:#E0AABD }
```

If only the background color should be changed can be used:

```
.background{ background-color:#E0AABD }
```

This example shows the color as background, it is applied via the CSS property "background".

To optimize and compress your CSS code, you can use our [online CSS compressor and optimizer](#) based on csstidy. If you want to create a linear or radial gradient as background or border, check our [CSS Gradient Generator](#).



Hey! You found this booklet interesting? Support Converting Colors with the new Membership Option!

The pro membership hides all ads, plus gives you double the colors in the color bucket, and more awesome pro features!

**[Learn more, Memberships starting at \\$2.50/m!](#)**

**Follow me  
on Twitter!**

@ConvertingColor