

Converting Colors

Decimal(14724796)

Have a look what the booklet for
Decimal(14724796) contains.

Decimal(14724796)	3
<i>Conversions</i>	4
<i>Details</i>	6
<i>Harmonies</i>	11
<i>Previews</i>	23
<i>Color Blindness Simulation</i>	26
<i>CSS Examples</i>	29

Color

Decimal(14724796)

Conversions

Conversions Part 1

Format	Color
Hex	E0AEBC
RGB	224, 174, 188
RGB Percent	88%, 68%, 74%
CMY	0.1216, 0.3176, 0.2627
CMYK	0.00, 0.22, 0.16, 0.12
HSL	343°, 45%, 78%
HSV	343°, 22%, 88%
XYZ	54.9536, 49.7502, 54.2833
YIQ	190.5460, 25.3060, 14.9540

Conversions

Conversions Part 2

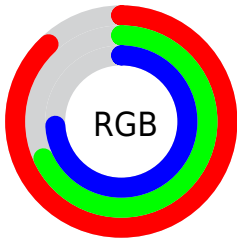
Format	Color
R _Y B	224, 174, 188
Decimal	14724796
CIE Lab	75.92, 20.35, -0.11
CIE LCh	76, 20.351, 359.688
Yxy	49.7502, 0.3456, 0.3129
Android (android.graphics.Color)	4292914876 (0xFFE0AEB3)
YUV	190.5460, -1.2552, 29.3392
Hunter-Lab	70.5338, 15.6369, 3.7437

Details

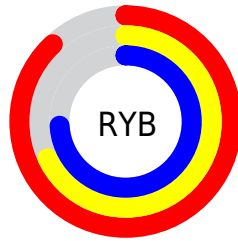
The Decimal color **14724796** is a light color, and the websafe version is hex **CC9999**. A complement of this color would be **11460818**, and the grayscale version is **12566463**.

A 20% lighter version of the original color is **16770804**, and **11041159** is the 20% darker color. If you saturate the color by 10%, you get **14719148**, and if you desaturate by 10%, it is **14730444**.

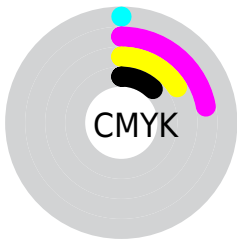
Distribution



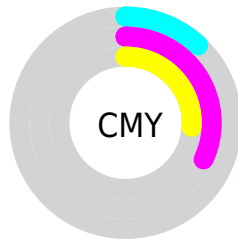
- Red (88%)
- Green (68%)
- Blue (74%)



- Red (88%)
- Yellow (68%)
- Blue (74%)



- Cyan (0%)
- Magenta (22%)
- Yellow (16%)
- Black (12%)



- Cyan (12%)
- Magenta (32%)
- Yellow (26%)

Brightness & Saturation Gradients

These gradients show how the Decimal color 14724796 changes by changing the brightness by 10 percent. The first figure shows a shift by +10% for each color and the second figure -10%.

Similar to the brightness gradients but the following saturation gradients show a change of the Decimal color 14724796 by changing the saturation by 10% instead.

 14724796

 14724796

16777215

 12882849

 16770804

 11041159

 9265262

 7555157

 5910846

 4266792

 2753812

 458752

 0

 14724796

 14724796

 14719148

 14730444

 14713244

 14736348

 14707596

 14741996

 14701691

 14745597

 14696043

 14745599

 14690395

 14684491

 14680127

Harmonies

Analogous

The Analogous color harmony consists of three colors that are next to each other on the color wheel.



13873614



14724796



14856105

Triad

The Triadic color harmony groups three colors that are evenly spaced from another and form a triangle on the color wheel.



14724796



11911322



9552603

Complementary

The Complementary color scheme is a pair of colors which are on the opposite of each other on the color wheel.



14724796



11460818

Split Complementary

Split-complementary colors differ from the complementary color scheme. The scheme consists of three colors, the original color and two neighbors of the complement color.



8963533



14724796



10536104

Square

The Square scheme is like the rectangle color scheme, but the four colors are evenly spaced on the color wheel.



14724796



13286038



9422522



10862048

Rectangle

The Rectangle color scheme consists of four colors that form a rectangle on the color wheel.



14724796



14594719



9422522



9225431

Sweetspot

The Sweet Spot groups the original color and five complimentary colors.



14724796



16772594



13807328



8418680



0



8421504

Same Dimension

The Same Dimension uses a secret algorithm to generate beautiful new colors.



14724796



16759501



14727598



7365992



11534385



3145742

Inverse Universe

The Inverse Universe completely reimagines the original color for something new.



14724796



16759501



11458016



7365992



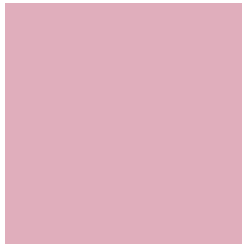
11534385



3145742

Previews

White Background



This preview shows how the Decimal color 14724796 looks on a white background.

Color Contrast Check

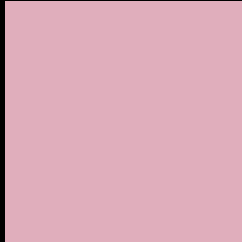
Large Text (above 18pt) WCAG AA × Fail

Any Text WCAG AA × Fail

Large Text (above 18pt) WCAG AAA × Fail

Any Text WCAG AAA × Fail

Black Background



This preview shows how the Decimal color 14724796 looks on a black background.

Color Contrast Check

Large Text (above 18pt) WCAG AA ✓ Pass

Any Text WCAG AA ✓ Pass

Large Text (above 18pt) WCAG AAA ✓ Pass

Any Text WCAG AAA ✓ Pass

If you want to check with other color combinations, try the [Color Contrast Checker](#).

Decimal 14724796 Background



This preview shows how black text looks on a background with the Decimal color 14724796.



This preview shows how white text looks on a background with the Decimal color 14724796.

Color Blindness Simulation

Color vision deficiency is a very complex topic, and I could not describe the different causes any better than Wikipedia does, so if you want to learn more, you should check out their [article about color blindness](#).

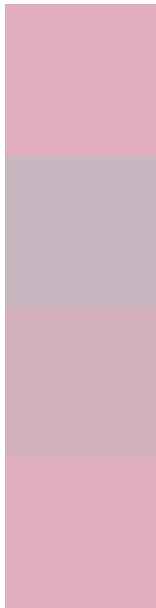
Dichromacy





Tritanopia
14724796

Trichromacy



Original Color
14724796

Protanomaly
13219520

Deuteranomaly
14004923

Tritanomaly
14724796

Monochromacy



Original Color
14724796

Achromatopsia
12566463

Achromatomaly
13351358

CSS Examples

Text

The CSS property to change the color of the text to Decimal 14724796 is called "color". The color property can be set on classes, ids or directly on the HTML element.

This example shows how text in the color #E0AEBC looks like.

```
.text, #text, p{  
  color:#E0AEBC  
}
```

If you want to add a text shadow in that color use the text-shadow property, you can generate a text shadow directly with our [CSS Text Shadow Generator](#).

Here you see how black text with a 4 pixel #E0AEBC colored shadow looks like.

```
.shadow{ text-shadow: 4px 4px 2px #E0AEBC
}
```

Border

The CSS property to change the border of an element to Decimal 14724796 is called "border". The border property can be set on classes, ids or directly on the HTML element.

This example shows the color as border, it can be applied via the CSS property "border" or "border-color".

```
.border, #border, table{ border:4px solid
#E0AEBC }
```

If only the border color should be changed use the property `border-color`.

```
.border{ border-color:#E0AEBC }
```

If you want to add a box shadow in that color use:

Here you see how a box with a 4 pixel #E0AEBC colored shadow looks like.

```
.boxshadow{ -moz-box-shadow:4px 4px 4px  
4px #E0AEBC; -webkit-box-shadow:4px 4px  
4px 4px #E0AEBC; box-shadow:4px 4px 4px  
4px #E0AEBC }
```

Background

The CSS property to change the background color of an element to Decimal 14724796 is called "background". The background property can be set on classes, ids or directly on the HTML element.

```
.background, #background, body{  
background:#E0AEBC }
```

If only the background color should be changed can be used:

```
.background{ background-color:#E0AEBC }
```

This example shows the color as background, it is applied via the CSS property "background".

To optimize and compress your CSS code, you can use our [online CSS compressor and optimizer](#) based on csstidy. If you want to create a linear or radial gradient as background or border, check our [CSS Gradient Generator](#).

Hey! You found this booklet interesting? Support Converting Colors with the new Membership Option!

The pro membership hides all ads, plus gives you double the colors in the color bucket, and more awesome pro features!

[Learn more, Memberships starting at \\$2.50/m!](#)

**Follow me
on Twitter!**

@ConvertingColor