

# Converting Colors

Decimal(14726032)

Have a look what the booklet for  
Decimal(14726032) contains.

<b>Decimal(14726032)</b> .....	3
<i><b>Conversions</b></i> .....	4
<i><b>Details</b></i> .....	6
<i><b>Harmonies</b></i> .....	11
<i><b>Previews</b></i> .....	23
<i><b>Color Blindness Simulation</b></i> .....	26
<i><b>CSS Examples</b></i> .....	29

# **Color**

**Decimal(14726032)**

# Conversions

## Conversions Part 1

<b>Format</b>	<b>Color</b>
Hex	E0B390
RGB	224, 179, 144
RGB Percent	88%, 70%, 56%
CMY	0.1216, 0.2980, 0.4353
CMYK	0.00, 0.20, 0.36, 0.12
HSL	26°, 56%, 72%
HSV	26°, 36%, 88%
XYZ	51.8946, 50.1011, 33.3209
YIQ	188.4650, 38.0550, -1.3450

# Conversions

## Conversions Part 2

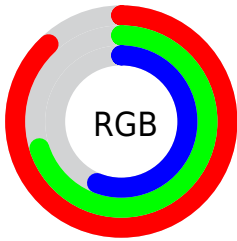
<b>Format</b>	<b>Color</b>
<a href="#">RYB</a>	<a href="#">224, 206, 144</a>
Decimal	<a href="#">14726032</a>
<a href="#">CIELab</a>	<a href="#">76.13, 11.54, 24.07</a>
<a href="#">CIElCh</a>	<a href="#">76, 26.696, 64.376</a>
<a href="#">Yxy</a>	<a href="#">50.1011, 0.3835, 0.3703</a>
<a href="#">Android (android.graphics.Color)</a>	<a href="#">4292916112 (0xFFE0B390)</a>
<a href="#">YUV</a>	<a href="#">188.4650, -21.9212, 31.1642</a>
<a href="#">Hunter-Lab</a>	<a href="#">70.7821, 7.0003, 21.6366</a>

# Details

The Decimal color **14726032** is a light color, and the websafe version is hex **FFCC99**. A complement of this color would be **9485792**, and the grayscale version is **12434877**.

A 20% lighter version of the original color is **16772038**, and **10976861** is the 20% darker color. If you saturate the color by 10%, you get **14722682**, and if you desaturate by 10%, it is **14729382**.

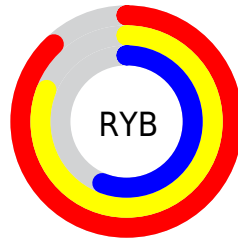
# Distribution



Red (88%)

Green (70%)

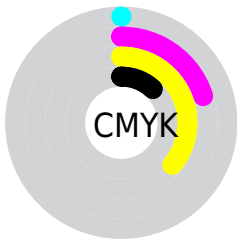
Blue (56%)



Red (88%)

Yellow (81%)

Blue (56%)

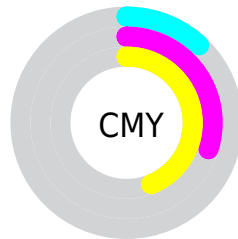


Cyan (0%)

Magenta (20%)

Yellow (36%)

Black (12%)



Cyan (12%)

Magenta (30%)

Yellow (44%)

# Brightness & Saturation Gradients

These gradients show how the Decimal color 14726032 changes by changing the brightness by 10 percent. The first figure shows a shift by +10% for each color and the second figure -10%.

Similar to the brightness gradients but the following saturation gradients show a change of the Decimal color 14726032 by changing the saturation by 10% instead.



 14726032

 14726032

16777215

 12818550

 16772038

 10976861

 16777186

 9200965

 7425327

 5715481

 4137216

 2493440

 0

 14726032

 14726032

■ 14722682

■ 14729382

■ 14719587

■ 14732477

■ 14716237

■ 14735827

■ 14713142

■ 14738922

■ 14709792

■ 14742271

■ 14706442

■ 14745599

■ 14705152

# Harmonies

## Analogous

The Analogous color harmony consists of three colors that are next to each other on the color wheel.



15510689



14726032



13286283

# Triad

The Triadic color harmony groups three colors that are evenly spaced from another and form a triangle on the color wheel.



14726032



8178367



12891364

# Complementary

The Complementary color scheme is a pair of colors which are on the opposite of each other on the color wheel.



14726032



9485792

# Split Complementary

Split-complementary colors differ from the complementary color scheme. The scheme consists of three colors, the original color and two neighbors of the complement color.



10730988



14726032



7653591

# Square

The Square scheme is like the rectangle color scheme, but the four colors are evenly spaced on the color wheel.



14726032



9685158



8635623



14659026

# Rectangle

The Rectangle color scheme consists of four colors that form a rectangle on the color wheel.



14726032



12173454



8635623



12171240

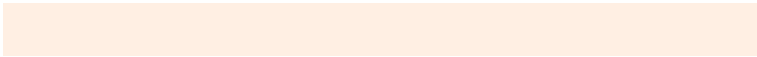


# Sweetspot

The Sweet Spot groups the original color and five complimentary colors.



14726032



16773091



14717117



8418927



0



8421504



# Same Dimension

The Same Dimension uses a secret algorithm to generate beautiful new colors.



14726032



16761233



14736272



7367269



11554048



3151104

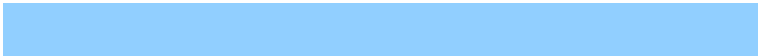


# Inverse Universe

The Inverse Universe completely reimagines the original color for something new.



9485792



9555967



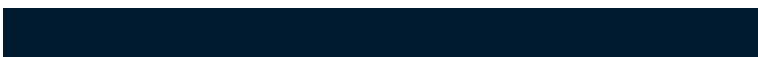
9475552



6646640



25520



6960



# Previews

## White Background



This preview shows how the Decimal color 14726032 looks on a white background.

## Color Contrast Check

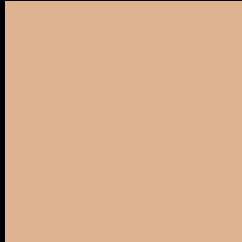
Large Text (above 18pt) WCAG AA × Fail

Any Text WCAG AA × Fail

Large Text (above 18pt) WCAG AAA × Fail

Any Text WCAG AAA × Fail

# Black Background



This preview shows how the Decimal color 14726032 looks on a black background.

## Color Contrast Check

Large Text (above 18pt) WCAG AA ✓ Pass

Any Text WCAG AA ✓ Pass

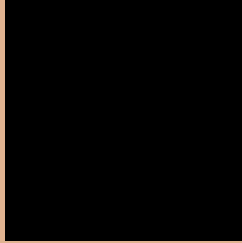
Large Text (above 18pt) WCAG AAA ✓ Pass

Any Text WCAG AAA ✓ Pass

If you want to check with other color combinations, try the [Color Contrast Checker](#).



## Decimal 14726032 Background



This preview shows how black text looks on a background with the Decimal color 14726032.




This preview shows how white text looks on a background with the Decimal color 14726032.

# Color Blindness Simulation

Color vision deficiency is a very complex topic, and I could not describe the different causes any better than Wikipedia does, so if you want to learn more, you should check out their [article about color blindness](#).

## Dichromacy





**Tritanopia**  
14986683

# Trichromacy



**Original Color**  
14726032

**Protanomaly**  
13744531

**Deuteranomaly**  
14595216

**Tritanomaly**  
14921643

# Monochromacy



**Original Color**  
14726032

**Achromatopsia**  
12369084

**Achromatomaly**  
13220268

# CSS Examples

## Text

The CSS property to change the color of the text to Decimal 14726032 is called "color". The color property can be set on classes, ids or directly on the HTML element.

This example shows how text in the color #E0B390 looks like.

```
.text, #text, p{  
  color:#E0B390  
}
```

If you want to add a text shadow in that color use the text-shadow property, you can generate a text shadow directly with our [CSS Text Shadow Generator](#).

Here you see how black text with a 4 pixel #E0B390 colored shadow looks like.

```
.shadow{ text-shadow: 4px 4px 2px #E0B390
}
```

## Border

The CSS property to change the border of an element to Decimal 14726032 is called "border". The border property can be set on classes, ids or directly on the HTML element.

This example shows the color as border, it can be applied via the CSS property "border" or "border-color".

```
.border, #border, table{ border:4px solid
#E0B390 }
```

If only the border color should be changed use the property `border-color`.

```
.border{ border-color:#E0B390 }
```

If you want to add a box shadow in that color use:

Here you see how a box with a 4 pixel #E0B390 colored shadow looks like.

```
.boxshadow{ -moz-box-shadow:4px 4px 4px  
4px #E0B390; -webkit-box-shadow:4px 4px  
4px 4px #E0B390; box-shadow:4px 4px 4px  
4px #E0B390 }
```

# Background

The CSS property to change the background color of an element to Decimal 14726032 is called "background". The background property can be set on classes, ids or directly on the HTML element.

```
.background, #background, body{  
background:#E0B390 }
```

If only the background color should be changed can be used:

```
.background{ background-color:#E0B390 }
```

This example shows the color as background, it is applied via the CSS property "background".

To optimize and compress your CSS code, you can use our [online CSS compressor and optimizer](#) based on csstidy. If you want to create a linear or radial gradient as background or border, check our [CSS Gradient Generator](#).



Hey! You found this booklet interesting? Support Converting Colors with the new Membership Option!

The pro membership hides all ads, plus gives you double the colors in the color bucket, and more awesome pro features!

**[Learn more, Memberships starting at \\$2.50/m!](#)**

**Follow me  
on Twitter!**

@ConvertingColor