

# Converting Colors

Decimal(14727858)

Have a look what the booklet for  
Decimal(14727858) contains.

<b>Decimal(14727858)</b> .....	3
<i><b>Conversions</b></i> .....	4
<i><b>Details</b></i> .....	6
<i><b>Harmonies</b></i> .....	11
<i><b>Previews</b></i> .....	23
<i><b>Color Blindness Simulation</b></i> .....	26
<i><b>CSS Examples</b></i> .....	29

# **Color**

**Decimal(14727858)**

# Conversions

## Conversions Part 1

Format	Color
Hex	E0BAB2
RGB	224, 186, 178
RGB Percent	88%, 73%, 70%
CMY	0.1216, 0.2706, 0.3020
CMYK	0.00, 0.17, 0.21, 0.12
HSL	10°, 43%, 79%
HSV	10°, 21%, 88%
XYZ	56.3353, 54.1795, 49.6080
YIQ	196.4500, 25.2160, 5.5680

# Conversions

## Conversions Part 2

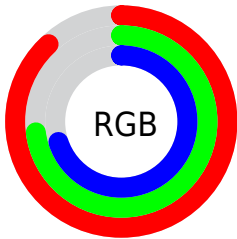
Format	Color
<a href="#">RYB</a>	<a href="#">224, 188, 178</a>
Decimal	<a href="#">14727858</a>
CIELab	<a href="#">78.57, 12.39, 9.15</a>
CIELCh	<a href="#">79, 15.401, 36.448</a>
Yxy	<a href="#">54.1795, 0.3518, 0.3384</a>
Android (android.graphics.Color)	<a href="#">4292917938</a> ( <a href="#">0xFFE0BAB2</a> )
YUV	<a href="#">196.4500, -9.0958, 24.1614</a>
Hunter-Lab	<a href="#">73.6067, 7.8042, 11.5656</a>

# Details

The Decimal color **14727858** is a light color, and the websafe version is hex **FFCCCC**. A complement of this color would be **11720928**, and the grayscale version is **12961221**.

A 20% lighter version of the original color is **16773866**, and **11044221** is the 20% darker color. If you saturate the color by 10%, you get **14722972**, and if you desaturate by 10%, it is **14732744**.

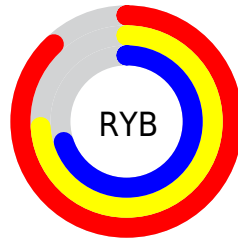
# Distribution



Red (88%)

Green (73%)

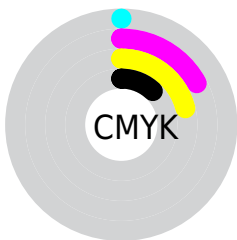
Blue (70%)



Red (88%)

Yellow (74%)

Blue (70%)

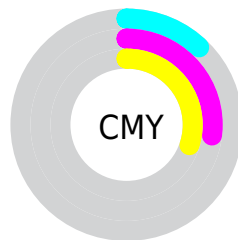


Cyan (0%)

Magenta (17%)

Yellow (21%)

Black (12%)



Cyan (12%)

Magenta (27%)

Yellow (30%)

# Brightness & Saturation Gradients

These gradients show how the Decimal color 14727858 changes by changing the brightness by 10 percent. The first figure shows a shift by +10% for each color and the second figure -10%.

Similar to the brightness gradients but the following saturation gradients show a change of the Decimal color 14727858 by changing the saturation by 10% instead.



 14727858

 14727858

16777215

 12885911

 16773866

 11044221

 9268324

 7557965

 5913654

 4335137

 2822410

 983040

 0

 14727858

 14727858

 14722972

 14732744

 14718341

 14737375

 14713455

 14742261

 14708824

 14745599

 14703938

 14699308

 14694421

 14690048

# Harmonies

## Analogous

The Analogous color harmony consists of three colors that are next to each other on the color wheel.



14727616



14727858



14204585

# Triad

The Triadic color harmony groups three colors that are evenly spaced from another and form a triangle on the color wheel.



14727858



11258551



12043231

# Complementary

The Complementary color scheme is a pair of colors which are on the opposite of each other on the color wheel.



14727858



11720928

# Split Complementary

Split-complementary colors differ from the complementary color scheme. The scheme consists of three colors, the original color and two neighbors of the complement color.



10995676



14727858



10537925

# Square

The Square scheme is like the rectangle color scheme, but the four colors are evenly spaced on the color wheel.



14727858



12306347



10406611



13221593

# Rectangle

The Rectangle color scheme consists of four colors that form a rectangle on the color wheel.



14727858



13681062



10406611



11650271



# Sweetspot

The Sweet Spot groups the original color and five complimentary colors.



14727858



16773872



14725848



8419447



0



8421504



# Same Dimension

The Same Dimension uses a secret algorithm to generate beautiful new colors.



14727858



16763583



14733746



7366501



11542272



3147776

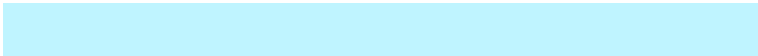


# Inverse Universe

The Inverse Universe completely reimagines the original color for something new.



11720928



12580095



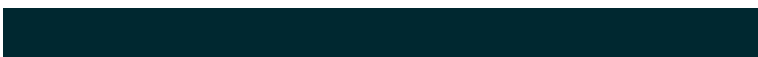
11715040



6647408



37296

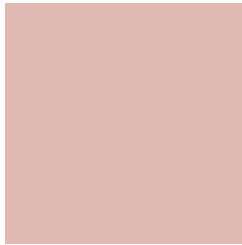


10288



# Previews

## White Background



This preview shows how the Decimal color 14727858 looks on a white background.

## Color Contrast Check

Large Text (above 18pt) WCAG AA × Fail

Any Text WCAG AA × Fail

Large Text (above 18pt) WCAG AAA × Fail

Any Text WCAG AAA × Fail

# Black Background



This preview shows how the Decimal color 14727858 looks on a black background.

## Color Contrast Check

Large Text (above 18pt) WCAG AA ✓ Pass

Any Text WCAG AA ✓ Pass

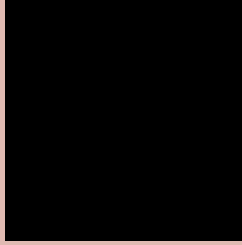
Large Text (above 18pt) WCAG AAA ✓ Pass

Any Text WCAG AAA ✓ Pass

If you want to check with other color combinations, try the [Color Contrast Checker](#).



## Decimal 14727858 Background



This preview shows how black text looks on a background with the Decimal color 14727858.




This preview shows how white text looks on a background with the Decimal color 14727858.

# Color Blindness Simulation

Color vision deficiency is a very complex topic, and I could not describe the different causes any better than Wikipedia does, so if you want to learn more, you should check out their [article about color blindness](#).

## Dichromacy





**Tritanopia**  
14858181

# Trichromacy



**Original Color**  
14727858

**Protanomaly**  
13746101

**Deuteranomaly**  
14531506

**Tritanomaly**  
14792894

# Monochromacy



**Original Color**  
14727858

**Achromatopsia**  
12895428

**Achromatomaly**  
13549757

# CSS Examples

## Text

The CSS property to change the color of the text to Decimal 14727858 is called "color". The color property can be set on classes, ids or directly on the HTML element.

This example shows how text in the color #E0BAB2 looks like.

```
.text, #text, p{  
    color:#E0BAB2  
}
```

If you want to add a text shadow in that color use the text-shadow property, you can generate a text shadow directly with our [CSS Text Shadow Generator](#).

Here you see how black text with a 4 pixel #E0BAB2 colored shadow looks like.

```
.shadow{ text-shadow: 4px 4px 2px #E0BAB2
}
```

## Border

The CSS property to change the border of an element to Decimal 14727858 is called "border". The border property can be set on classes, ids or directly on the HTML element.

This example shows the color as border, it can be applied via the CSS property "border" or "border-color".

```
.border, #border, table{ border:4px solid
#E0BAB2 }
```

If only the border color should be changed use the property `border-color`.

```
.border{ border-color:#E0BAB2 }
```

If you want to add a box shadow in that color use:

Here you see how a box with a 4 pixel #E0BAB2 colored shadow looks like.

```
.boxshadow{ -moz-box-shadow:4px 4px 4px  
4px #E0BAB2; -webkit-box-shadow:4px 4px  
4px 4px #E0BAB2; box-shadow:4px 4px 4px  
4px #E0BAB2 }
```

# Background

The CSS property to change the background color of an element to Decimal 14727858 is called "background". The background property can be set on classes, ids or directly on the HTML element.

```
.background, #background, body{  
background:#E0BAB2 }
```

If only the background color should be changed can be used:

```
.background{ background-color:#E0BAB2 }
```

This example shows the color as background, it is applied via the CSS property "background".

To optimize and compress your CSS code, you can use our [online CSS compressor and optimizer](#) based on csstidy. If you want to create a linear or radial gradient as background or border, check our [CSS Gradient Generator](#).



Hey! You found this booklet interesting? Support Converting Colors with the new Membership Option!

The pro membership hides all ads, plus gives you double the colors in the color bucket, and more awesome pro features!

**[Learn more, Memberships starting at \\$2.50/m!](#)**

**Follow me  
on Twitter!**

@ConvertingColor