

Converting Colors

Decimal(14727860)

Have a look what the booklet for
Decimal(14727860) contains.

Decimal(14727860)	3
<i>Conversions</i>	4
<i>Details</i>	6
<i>Harmonies</i>	11
<i>Previews</i>	23
<i>Color Blindness Simulation</i>	26
<i>CSS Examples</i>	29

Color

Decimal(14727860)

Conversions

Conversions Part 1

Format	Color
Hex	E0BAB4
RGB	224, 186, 180
RGB Percent	88%, 73%, 71%
CMY	0.1216, 0.2706, 0.2941
CMYK	0.00, 0.17, 0.20, 0.12
HSL	8°, 42%, 79%
HSV	8°, 20%, 88%
XYZ	56.5376, 54.2604, 50.6735
YIQ	196.6780, 24.5740, 6.1900

Conversions

Conversions Part 2

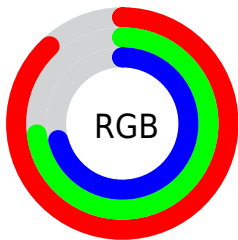
Format	Color
RYB	224, 187, 180
Decimal	14727860
CIELab	78.61, 12.69, 8.14
CIELCh	79, 15.072, 32.672
Yxy	54.2604, 0.3501, 0.3360
Android (android.graphics.Color)	4292917940 (0xFFE0BAB4)
YUV	196.6780, -8.2223, 23.9614
Hunter-Lab	73.6617, 8.0964, 10.7763

Details

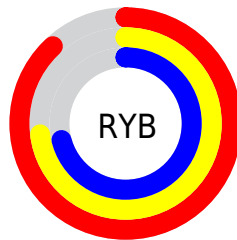
The Decimal color **14727860** is a light color, and the websafe version is hex **FFCCCC**. A complement of this color would be **11852512**, and the grayscale version is **12961221**.

A 20% lighter version of the original color is **16773868**, and **11044223** is the 20% darker color. If you saturate the color by 10%, you get **14722974**, and if you desaturate by 10%, it is **14732746**.

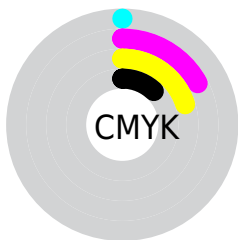
Distribution



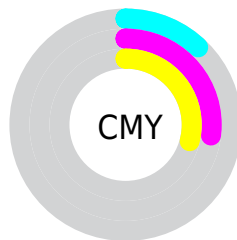
- Red (88%)
- Green (73%)
- Blue (71%)



- Red (88%)
- Yellow (73%)
- Blue (71%)



- Cyan (0%)
- Magenta (17%)
- Yellow (20%)
- Black (12%)



- Cyan (12%)
- Magenta (27%)
- Yellow (29%)

Brightness & Saturation Gradients

These gradients show how the Decimal color 14727860 changes by changing the brightness by 10 percent. The first figure shows a shift by +10% for each color and the second figure -10%.

Similar to the brightness gradients but the following saturation gradients show a change of the Decimal color 14727860 by changing the saturation by 10% instead.

14727860

14727860

16777215

12885913

16773868

11044223

9268070

7557966

5913655

4335138

2822412

1048576

0

 14727860

 14727860

 14722974

 14732746

 14717831

 14737889

 14712945

 14742775

 14708058

 14745599

 14702916

 14698030

 14693143

 14688001

 14688000

Harmonies

Analogous

The Analogous color harmony consists of three colors that are next to each other on the color wheel.



14662082



14727860



14269866

Triad

The Triadic color harmony groups three colors that are evenly spaced from another and form a triangle on the color wheel.



14727860



11389365



11912158

Complementary

The Complementary color scheme is a pair of colors which are on the opposite of each other on the color wheel.



14727860



11852512

Split Complementary

Split-complementary colors differ from the complementary color scheme. The scheme consists of three colors, the original color and two neighbors of the complement color.



10930139



14727860



10668995

Square

The Square scheme is like the rectangle color scheme, but the four colors are evenly spaced on the color wheel.



14727860



12437163



10472145



13090778

Rectangle

The Rectangle color scheme consists of four colors that form a rectangle on the color wheel.



14727860



13746343



10472145



11519454

Sweetspot

The Sweet Spot groups the original color and five complimentary colors.



14727860



16773872



14726362



8419447



0



8421504

Same Dimension

The Same Dimension uses a secret algorithm to generate beautiful new colors.



14727860



16763586



14733492



7366501



11540480



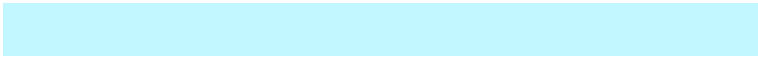
3147520

Inverse Universe

The Inverse Universe completely reimagines the original color for something new.



11852512



12777471



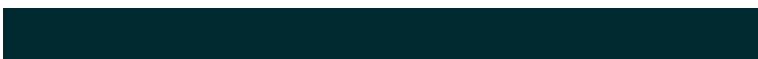
11846880



6647664



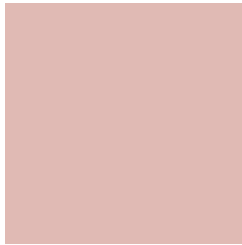
39088



10800

Previews

White Background



This preview shows how the Decimal color 14727860 looks on a white background.

Color Contrast Check

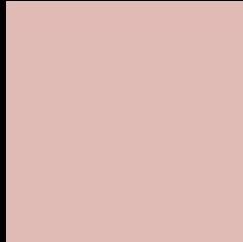
Large Text (above 18pt) WCAG AA × Fail

Any Text WCAG AA × Fail

Large Text (above 18pt) WCAG AAA × Fail

Any Text WCAG AAA × Fail

Black Background



This preview shows how the Decimal color 14727860 looks on a black background.

Color Contrast Check

Large Text (above 18pt) WCAG AA ✓ Pass

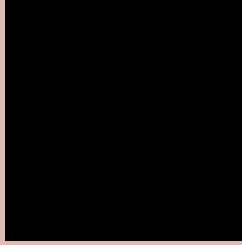
Any Text WCAG AA ✓ Pass

Large Text (above 18pt) WCAG AAA ✓ Pass

Any Text WCAG AAA ✓ Pass

If you want to check with other color combinations, try the [Color Contrast Checker](#).

Decimal 14727860 Background



This preview shows how black text looks on a background with the Decimal color 14727860.



This preview shows how white text looks on a background with the Decimal color 14727860.

Color Blindness Simulation

Color vision deficiency is a very complex topic, and I could not describe the different causes any better than Wikipedia does, so if you want to learn more, you should check out their [article about color blindness](#).


Dichromacy



Original Color
14727860

Protanopia
13222584

Deuteranopia
14400692



Tritanopia
14858182

Trichromacy



Original Color
14727860

Protanomaly
13746103

Deuteranomaly
14531508

Tritanomaly
14792895

Monochromacy



Original Color
14727860

Achromatopsia
12961221

Achromatomaly
13615551

CSS Examples

Text

The CSS property to change the color of the text to Decimal 14727860 is called "color". The color property can be set on classes, ids or directly on the HTML element.

This example shows how text in the color #E0BAB4 looks like.

```
.text, #text, p{  
    color:#E0BAB4  
}
```

If you want to add a text shadow in that color use the text-shadow property, you can generate a text shadow directly with our [CSS Text Shadow Generator](#).

Here you see how black text with a 4 pixel #E0BAB4 colored shadow looks like.

```
.shadow{ text-shadow: 4px 4px 2px #E0BAB4
}
```

Border

The CSS property to change the border of an element to Decimal 14727860 is called "border". The border property can be set on classes, ids or directly on the HTML element.

This example shows the color as border, it can be applied via the CSS property "border" or "border-color".

```
.border, #border, table{ border:4px solid
#E0BAB4 }
```

If only the border color should be changed use the property `border-color`.

```
.border{ border-color:#E0BAB4 }
```

If you want to add a box shadow in that color use:

Here you see how a box with a 4 pixel #E0BAB4 colored shadow looks like.

```
.boxshadow{ -moz-box-shadow:4px 4px 4px  
4px #E0BAB4; -webkit-box-shadow:4px 4px  
4px 4px #E0BAB4; box-shadow:4px 4px 4px  
4px #E0BAB4 }
```

Background

The CSS property to change the background color of an element to Decimal 14727860 is called "background". The background property can be set on classes, ids or directly on the HTML element.

```
.background, #background, body{  
background:#E0BAB4 }
```

If only the background color should be changed can be used:

```
.background{ background-color:#E0BAB4 }
```

This example shows the color as background, it is applied via the CSS property "background".

To optimize and compress your CSS code, you can use our [online CSS compressor and optimizer](#) based on csstidy. If you want to create a linear or radial gradient as background or border, check our [CSS Gradient Generator](#).

Hey! You found this booklet interesting? Support Converting Colors with the new Membership Option!

The pro membership hides all ads, plus gives you double the colors in the color bucket, and more awesome pro features!

[Learn more, Memberships starting at \\$2.50/m!](#)

**Follow me
on Twitter!**

@ConvertingColor