

Converting Colors

Decimal(14729136)

Have a look what the booklet for
Decimal(14729136) contains.

Decimal(14729136)	3
<i>Conversions</i>	4
<i>Details</i>	6
<i>Harmonies</i>	11
<i>Previews</i>	23
<i>Color Blindness Simulation</i>	26
<i>CSS Examples</i>	29

Color

Decimal(14729136)

Conversions

Conversions Part 1

Format	Color
Hex	E0BFB0
RGB	224, 191, 176
RGB Percent	88%, 75%, 69%
CMY	0.1216, 0.2510, 0.3098
CMYK	0.00, 0.15, 0.21, 0.12
HSL	19°, 44%, 78%
HSV	19°, 21%, 88%
XYZ	57.2077, 56.2435, 48.9152
YIQ	199.1570, 24.4830, 2.3310

Conversions

Conversions Part 2

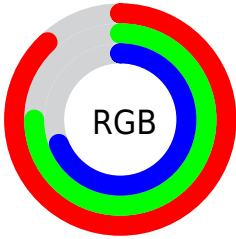
Format	Color
R _Y B	224, 198, 176
Decimal	14729136
CIE Lab	79.75, 9.43, 11.91
CIE LCh	80, 15.196, 51.627
Yxy	56.2435, 0.3523, 0.3464
Android (android.graphics.Color)	4292919216 (0xFFE0BFB0)
YUV	199.1570, -11.4164, 21.7873
Hunter-Lab	74.9957, 4.9199, 13.8256

Details

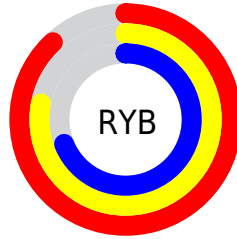
The Decimal color **14729136** is a light color, and the websafe version is hex **FFCCCC**. A complement of this color would be **11588064**, and the grayscale version is **13092807**.

A 20% lighter version of the original color is **16775144**, and **11045499** is the 20% darker color. If you saturate the color by 10%, you get **14725274**, and if you desaturate by 10%, it is **14732998**.

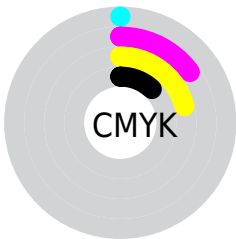
Distribution



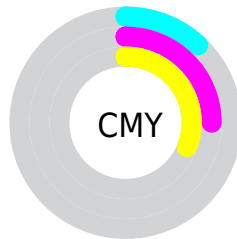
- Red (88%)
- Green (75%)
- Blue (69%)



- Red (88%)
- Yellow (78%)
- Blue (69%)



- Cyan (0%)
- Magenta (15%)
- Yellow (21%)
- Black (12%)



- Cyan (12%)
- Magenta (25%)
- Yellow (31%)

Brightness & Saturation Gradients

These gradients show how the Decimal color 14729136 changes by changing the brightness by 10 percent. The first figure shows a shift by +10% for each color and the second figure -10%.

Similar to the brightness gradients but the following saturation gradients show a change of the Decimal color 14729136 by changing the saturation by 10% instead.

 14729136

 14729136

16777215

 12887189

 16775144

 11045499

 9269347

 7559243

 5914676

 4336159

 2823687

 1245184

 0

 14729136

 14729136

 14725274

 14732998

 14721155

 14737117

 14717293

 14740979

 14713174

 14745087

 14709312

 14745599

 14705450

 14701331

 14697984

Harmonies

Analogous

The Analogous color harmony consists of three colors that are next to each other on the color wheel.



14990524



14729136



14009258

Triad

The Triadic color harmony groups three colors that are evenly spaced from another and form a triangle on the color wheel.



14729136



11062977



12829664

Complementary

The Complementary color scheme is a pair of colors which are on the opposite of each other on the color wheel.



14729136



11588064

Split Complementary

Split-complementary colors differ from the complementary color scheme. The scheme consists of three colors, the original color and two neighbors of the complement color.



11716833



14729136



10604240

Square

The Square scheme is like the rectangle color scheme, but the four colors are evenly spaced on the color wheel.



14729136



11979956



10865883



13942743

Rectangle

The Rectangle color scheme consists of four colors that form a rectangle on the color wheel.



14729136



13354666



10865883



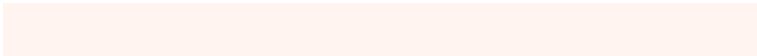
12436961

Sweetspot

The Sweet Spot groups the original color and five complimentary colors.



14729136



16774384



14725330



8419703



0



8421504

Same Dimension

The Same Dimension uses a secret algorithm to generate beautiful new colors.



14729136



16765373



14735024



7366757



11548416



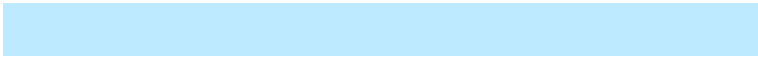
3149568

Inverse Universe

The Inverse Universe completely reimagines the original color for something new.



11588064



12446463



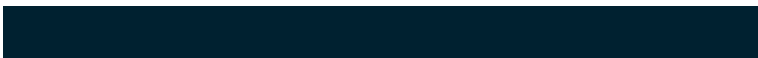
11582176



6647152



31152



8496

Previews

White Background



This preview shows how the Decimal color 14729136 looks on a white background.

Color Contrast Check

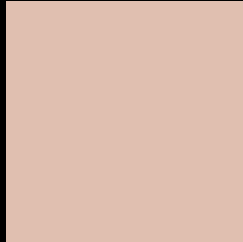
Large Text (above 18pt) WCAG AA × Fail

Any Text WCAG AA × Fail

Large Text (above 18pt) WCAG AAA × Fail

Any Text WCAG AAA × Fail

Black Background



This preview shows how the Decimal color 14729136 looks on a black background.

Color Contrast Check

Large Text (above 18pt) WCAG AA ✓ Pass

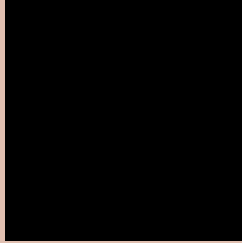
Any Text WCAG AA ✓ Pass

Large Text (above 18pt) WCAG AAA ✓ Pass

Any Text WCAG AAA ✓ Pass

If you want to check with other color combinations, try the [Color Contrast Checker](#).

Decimal 14729136 Background



This preview shows how black text looks on a background with the Decimal color 14729136.



This preview shows how white text looks on a background with the Decimal color 14729136.

Color Blindness Simulation

Color vision deficiency is a very complex topic, and I could not describe the different causes any better than Wikipedia does, so if you want to learn more, you should check out their [article about color blindness](#).

Dichromacy





Tritanopia
14924746

Trichromacy



Original Color
14729136

Protanomaly
14009266

Deuteranomaly
14794672

Tritanomaly
14859457

Monochromacy



Original Color
14729136

Achromatopsia
13092807

Achromatomaly
13681855

CSS Examples

Text

The CSS property to change the color of the text to Decimal 14729136 is called "color". The color property can be set on classes, ids or directly on the HTML element.

This example shows how text in the color #E0BFB0 looks like.

```
.text, #text, p{  
    color:#E0BFB0  
}
```

If you want to add a text shadow in that color use the text-shadow property, you can generate a text shadow directly with our [CSS Text Shadow Generator](#).

Here you see how black text with a 4 pixel #E0BF00 colored shadow looks like.

```
.shadow{ text-shadow: 4px 4px 2px #E0BF00  
}
```

Border

The CSS property to change the border of an element to Decimal 14729136 is called "border". The border property can be set on classes, ids or directly on the HTML element.

This example shows the color as border, it can be applied via the CSS property "border" or "border-color".

```
.border, #border, table{ border:4px solid  
#E0BF00 }
```

If only the border color should be changed use the property `border-color`.

```
.border{ border-color:#E0BFB0 }
```

If you want to add a box shadow in that color use:

Here you see how a box with a 4 pixel #E0BFB0 colored shadow looks like.

```
.boxshadow{ -moz-box-shadow:4px 4px 4px  
4px #E0BFB0; -webkit-box-shadow:4px 4px  
4px 4px #E0BFB0; box-shadow:4px 4px 4px  
4px #E0BFB0 }
```

Background

The CSS property to change the background color of an element to Decimal 14729136 is called "background". The background property can be set on classes, ids or directly on the HTML element.

```
.background, #background, body{  
background:#E0BFB0 }
```

If only the background color should be changed can be used:

```
.background{ background-color:#E0BFB0 }
```

This example shows the color as background, it is applied via the CSS property "background".

To optimize and compress your CSS code, you can use our [online CSS compressor and optimizer](#) based on csstidy. If you want to create a linear or radial gradient as background or border, check our [CSS Gradient Generator](#).

Hey! You found this booklet interesting? Support Converting Colors with the new Membership Option!

The pro membership hides all ads, plus gives you double the colors in the color bucket, and more awesome pro features!

[Learn more, Memberships starting at \\$2.50/m!](#)

**Follow me
on Twitter!**

@ConvertingColor