

Converting Colors

Decimal(14729155)

Have a look what the booklet for
Decimal(14729155) contains.

Decimal(14729155)	3
<i>Conversions</i>	4
<i>Details</i>	6
<i>Harmonies</i>	11
<i>Previews</i>	23
<i>Color Blindness Simulation</i>	26
<i>CSS Examples</i>	29

Color

Decimal(14729155)

Conversions

Conversions Part 1

Format	Color
Hex	E0BFC3
RGB	224, 191, 195
RGB Percent	88%, 75%, 76%
CMY	0.1216, 0.2510, 0.2353
CMYK	0.00, 0.15, 0.13, 0.12
HSL	353°, 35%, 81%
HSV	353°, 15%, 88%
XYZ	59.2216, 57.0490, 59.5200
YIQ	201.3230, 18.3840, 8.2400

Conversions

Conversions Part 2

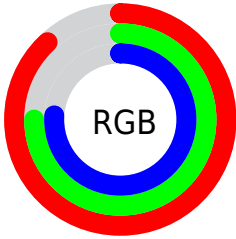
Format	Color
R _Y B	224, 191, 195
Decimal	14729155
CIE Lab	80.21, 12.37, 2.34
CIE LCh	80, 12.589, 10.732
Yxy	57.0490, 0.3369, 0.3245
Android (android.graphics.Color)	4292919235 (0xFFE0BFC3)
YUV	201.3230, -3.1172, 19.8877
Hunter-Lab	75.5308, 7.7780, 6.1497

Details

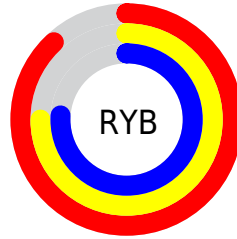
The Decimal color **14729155** is a light color, and the websafe version is hex **FFCCCC**. A complement of this color would be **12574940**, and the grayscale version is **13224393**.

A 20% lighter version of the original color is **16775164**, and **11045517** is the 20% darker color. If you saturate the color by 10%, you get **14723503**, and if you desaturate by 10%, it is **14734807**.

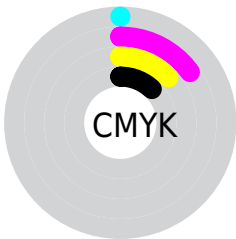
Distribution



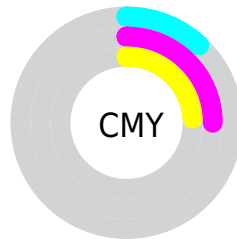
- Red (88%)
- Green (75%)
- Blue (76%)



- Red (88%)
- Yellow (75%)
- Blue (76%)



- Cyan (0%)
- Magenta (15%)
- Yellow (13%)
- Black (12%)



- Cyan (12%)
- Magenta (25%)
- Yellow (24%)

Brightness & Saturation Gradients

These gradients show how the Decimal color 14729155 changes by changing the brightness by 10 percent. The first figure shows a shift by +10% for each color and the second figure -10%.

Similar to the brightness gradients but the following saturation gradients show a change of the Decimal color 14729155 by changing the saturation by 10% instead.

 14729155

 14729155

16777215

 12887208

 16775164

 11045517

 9334900

 7624795

 5980228

 4401710

 2888985

 1703936

 0

 14729155

 14729155

 14723503

 14734807

 14717596

 14740714

 14711944

 14745598

 14706036

 14745599

 14700385

 14694733

 14688825

 14683174

 14680091

Harmonies

Analogous

The Analogous color harmony consists of three colors that are next to each other on the color wheel.



14336207



14729155



14663864

Triad

The Triadic color harmony groups three colors that are evenly spaced from another and form a triangle on the color wheel.



14729155



12569525



11717341

Complementary

The Complementary color scheme is a pair of colors which are on the opposite of each other on the color wheel.



14729155



12574940

Split Complementary

Split-complementary colors differ from the complementary color scheme. The scheme consists of three colors, the original color and two neighbors of the complement color.



11193814



14729155



11718079

Square

The Square scheme is like the rectangle color scheme, but the four colors are evenly spaced on the color wheel.



14729155



13420464



11194059



12633822

Rectangle

The Rectangle color scheme consists of four colors that form a rectangle on the color wheel.



14729155



14402227



11194059



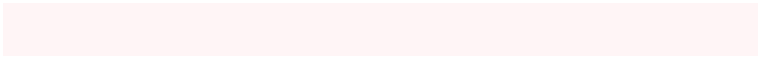
11520987

Sweetspot

The Sweet Spot groups the original color and five complimentary colors.



14729155



16774646



14467040



8419706



0



8421504

Same Dimension

The Same Dimension uses a secret algorithm to generate beautiful new colors.



14729155



16765399



14732223



7365990



11534357



3145734

Inverse Universe

The Inverse Universe completely reimagines the original color for something new.



14729155



16765399



12571872



7365990



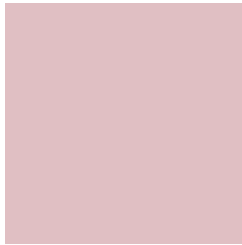
11534357



3145734

Previews

White Background



This preview shows how the Decimal color 14729155 looks on a white background.

Color Contrast Check

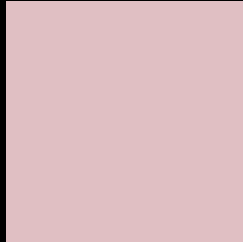
Large Text (above 18pt) WCAG AA × Fail

Any Text WCAG AA × Fail

Large Text (above 18pt) WCAG AAA × Fail

Any Text WCAG AAA × Fail

Black Background



This preview shows how the Decimal color 14729155 looks on a black background.

Color Contrast Check

Large Text (above 18pt) WCAG AA ✓ Pass

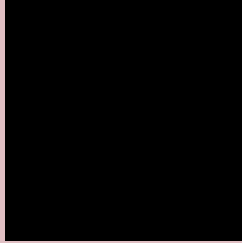
Any Text WCAG AA ✓ Pass

Large Text (above 18pt) WCAG AAA ✓ Pass

Any Text WCAG AAA ✓ Pass

If you want to check with other color combinations, try the [Color Contrast Checker](#).

Decimal 14729155 Background



This preview shows how black text looks on a background with the Decimal color 14729155.

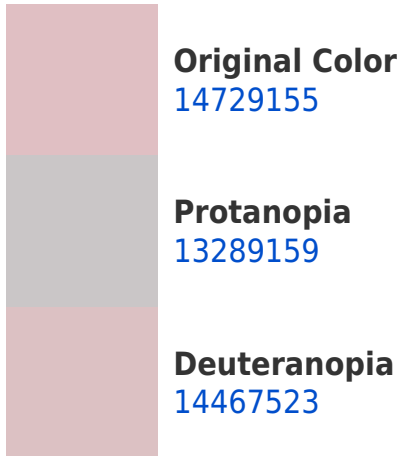


This preview shows how white text looks on a background with the Decimal color 14729155.

Color Blindness Simulation

Color vision deficiency is a very complex topic, and I could not describe the different causes any better than Wikipedia does, so if you want to learn more, you should check out their [article about color blindness](#).

Dichromacy





Tritanopia
14794444

Trichromacy



Original Color
14729155

Protanomaly
13812678

Deuteranomaly
14532803

Tritanomaly
14794441

Monochromacy



Original Color
14729155

Achromatopsia
13224393

Achromatomaly
13747655

CSS Examples

Text

The CSS property to change the color of the text to Decimal 14729155 is called "color". The color property can be set on classes, ids or directly on the HTML element.

This example shows how text in the color #E0BFC3 looks like.

```
.text, #text, p{  
    color:#E0BFC3  
}
```

If you want to add a text shadow in that color use the text-shadow property, you can generate a text shadow directly with our [CSS Text Shadow Generator](#).

Here you see how black text with a 4 pixel #E0BFC3 colored shadow looks like.

```
.shadow{ text-shadow: 4px 4px 2px #E0BFC3
}
```

Border

The CSS property to change the border of an element to Decimal 14729155 is called "border". The border property can be set on classes, ids or directly on the HTML element.

This example shows the color as border, it can be applied via the CSS property "border" or "border-color".

```
.border, #border, table{ border:4px solid
#E0BFC3 }
```

If only the border color should be changed use the property `border-color`.

```
.border{ border-color:#E0BFC3 }
```

If you want to add a box shadow in that color use:

Here you see how a box with a 4 pixel #E0BFC3 colored shadow looks like.

```
.boxshadow{ -moz-box-shadow:4px 4px 4px  
4px #E0BFC3; -webkit-box-shadow:4px 4px  
4px 4px #E0BFC3; box-shadow:4px 4px 4px  
4px #E0BFC3 }
```

Background

The CSS property to change the background color of an element to Decimal 14729155 is called "background". The background property can be set on classes, ids or directly on the HTML element.

```
.background, #background, body{  
background:#E0BFC3 }
```

If only the background color should be changed can be used:

```
.background{ background-color:#E0BFC3 }
```

This example shows the color as background, it is applied via the CSS property "background".

To optimize and compress your CSS code, you can use our [online CSS compressor and optimizer](#) based on csstidy. If you want to create a linear or radial gradient as background or border, check our [CSS Gradient Generator](#).

Hey! You found this booklet interesting? Support Converting Colors with the new Membership Option!

The pro membership hides all ads, plus gives you double the colors in the color bucket, and more awesome pro features!

[Learn more, Memberships starting at \\$2.50/m!](#)

**Follow me
on Twitter!**

@ConvertingColor