

# Converting Colors

Decimal(14729406)

Have a look what the booklet for  
Decimal(14729406) contains.

<b>Decimal(14729406)</b> .....	3
<i><b>Conversions</b></i> .....	4
<i><b>Details</b></i> .....	6
<i><b>Harmonies</b></i> .....	11
<i><b>Previews</b></i> .....	23
<i><b>Color Blindness Simulation</b></i> .....	26
<i><b>CSS Examples</b></i> .....	29

# **Color**

**Decimal(14729406)**

# Conversions

## Conversions Part 1

Format	Color
Hex	E0C0BE
RGB	224, 192, 190
RGB Percent	88%, 75%, 75%
CMY	0.1216, 0.2471, 0.2549
CMYK	0.00, 0.14, 0.15, 0.12
HSL	4°, 35%, 81%
HSV	4°, 15%, 88%
XYZ	58.8844, 57.2643, 56.6648
YIQ	201.3400, 19.7140, 6.1620

# Conversions

## Conversions Part 2

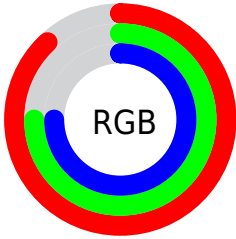
Format	Color
<a href="#">RYB</a>	<a href="#">224, 192, 190</a>
Decimal	<a href="#">14729406</a>
CIELab	<a href="#">80.33, 11.04, 5.21</a>
CIELCh	<a href="#">80, 12.204, 25.274</a>
Yxy	<a href="#">57.2643, 0.3407, 0.3314</a>
Android (android.graphics.Color)	<a href="#">4292919486</a> ( <a href="#">0xFFE0C0BE</a> )
YUV	<a href="#">201.3400, -5.5906, 19.8728</a>
Hunter-Lab	<a href="#">75.6732, 6.4701, 8.5743</a>

# Details

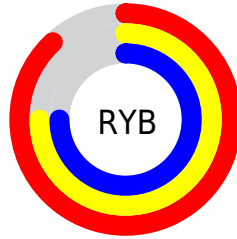
The Decimal color **14729406** is a light color, and the websafe version is hex **FFCCCC**. A complement of this color would be **12508896**, and the grayscale version is **13224393**.

A 20% lighter version of the original color is **16775414**, and **11045513** is the 20% darker color. If you saturate the color by 10%, you get **14724008**, and if you desaturate by 10%, it is **14734804**.

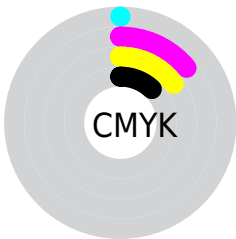
# Distribution



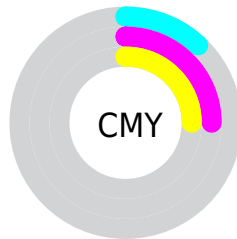
- Red (88%)
- Green (75%)
- Blue (75%)



- Red (88%)
- Yellow (75%)
- Blue (75%)



- Cyan (0%)
- Magenta (14%)
- Yellow (15%)
- Black (12%)



- Cyan (12%)
- Magenta (25%)
- Yellow (25%)

# Brightness & Saturation Gradients

These gradients show how the Decimal color 14729406 changes by changing the brightness by 10 percent. The first figure shows a shift by +10% for each color and the second figure -10%.

Similar to the brightness gradients but the following saturation gradients show a change of the Decimal color 14729406 by changing the saturation by 10% instead.



 14729406

 14729406

16777215

 12887459

 16775414

 11045513

 9335151

 7624791

 5980480

 4401962

 2889237

 1572864

 0

 14729406

 14729406

 14724008

 14734804

 14718609

 14740203

 14713211

 14745599

 14707812

 14702414

 14697016

 14691361

 14685963

 14683392

# Harmonies

## Analogous

The Analogous color harmony consists of three colors that are next to each other on the color wheel.



14532809



14729406



14467765

# Triad

The Triadic color harmony groups three colors that are evenly spaced from another and form a triangle on the color wheel.



14729406



12176570



12175838

# Complementary

The Complementary color scheme is a pair of colors which are on the opposite of each other on the color wheel.



14729406



12508896

# Split Complementary

Split-complementary colors differ from the complementary color scheme. The scheme consists of three colors, the original color and two neighbors of the complement color.



11455706



14729406



11521733

# Square

The Square scheme is like the rectangle color scheme, but the four colors are evenly spaced on the color wheel.



14729406



13028019



11259601



13092316

# Rectangle

The Rectangle color scheme consists of four colors that form a rectangle on the color wheel.



14729406



14075314



11259601



11913949

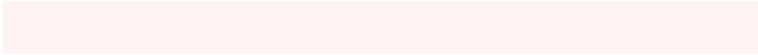


# Sweetspot

The Sweet Spot groups the original color and five complimentary colors.



14729406



16774130



14728926



8419448



0



8421504



# Same Dimension

The Same Dimension uses a secret algorithm to generate beautiful new colors.



14729406



16766161



14733758



7366245



11536896



3146496



# Inverse Universe

The Inverse Universe completely reimagines the original color for something new.



12508896



13761791



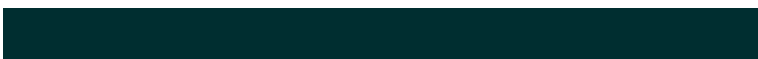
12504544



6647920



42672

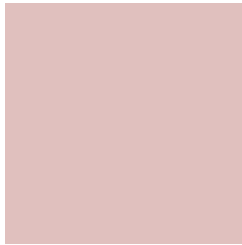


11824



# Previews

## White Background



This preview shows how the Decimal color 14729406 looks on a white background.

## Color Contrast Check

Large Text (above 18pt) WCAG AA × Fail

Any Text WCAG AA × Fail

Large Text (above 18pt) WCAG AAA × Fail

Any Text WCAG AAA × Fail

# Black Background



This preview shows how the Decimal color 14729406 looks on a black background.

## Color Contrast Check

Large Text (above 18pt) WCAG AA ✓ Pass

Any Text WCAG AA ✓ Pass

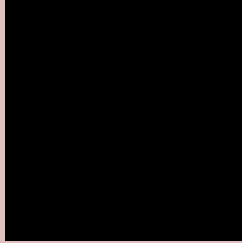
Large Text (above 18pt) WCAG AAA ✓ Pass

Any Text WCAG AAA ✓ Pass

If you want to check with other color combinations, try the [Color Contrast Checker](#).



## Decimal 14729406 Background



This preview shows how black text looks on a background with the Decimal color 14729406.




This preview shows how white text looks on a background with the Decimal color 14729406.

# Color Blindness Simulation

Color vision deficiency is a very complex topic, and I could not describe the different causes any better than Wikipedia does, so if you want to learn more, you should check out their [article about color blindness](#).

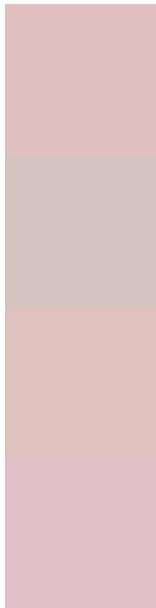
## Dichromacy





**Tritanopia**  
14859981

# Trichromacy



**Original Color**  
14729406

**Protanomaly**  
13878465

**Deuteranomaly**  
14664126

**Tritanomaly**  
14794696

# Monochromacy



**Original Color**  
14729406

**Achromatopsia**  
13224393

**Achromatomaly**  
13747909

# CSS Examples

## Text

The CSS property to change the color of the text to Decimal 14729406 is called "color". The color property can be set on classes, ids or directly on the HTML element.

This example shows how text in the color #E0C0BE looks like.

```
.text, #text, p{  
    color:#E0C0BE  
}
```

If you want to add a text shadow in that color use the text-shadow property, you can generate a text shadow directly with our [CSS Text Shadow Generator](#).

Here you see how black text with a 4 pixel #E0C0BE colored shadow looks like.

```
.shadow{ text-shadow: 4px 4px 2px #E0C0BE
}
```

## Border

The CSS property to change the border of an element to Decimal 14729406 is called "border". The border property can be set on classes, ids or directly on the HTML element.

This example shows the color as border, it can be applied via the CSS property "border" or "border-color".

```
.border, #border, table{ border:4px solid
#E0C0BE }
```

If only the border color should be changed use the property `border-color`.

```
.border{ border-color:#E0C0BE }
```

If you want to add a box shadow in that color use:

Here you see how a box with a 4 pixel #E0C0BE colored shadow looks like.

```
.boxshadow{ -moz-box-shadow:4px 4px 4px  
4px #E0C0BE; -webkit-box-shadow:4px 4px  
4px 4px #E0C0BE; box-shadow:4px 4px 4px  
4px #E0C0BE }
```

# Background

The CSS property to change the background color of an element to Decimal 14729406 is called "background". The background property can be set on classes, ids or directly on the HTML element.

```
.background, #background, body{  
background:#E0C0BE }
```

If only the background color should be changed can be used:

```
.background{ background-color:#E0C0BE }
```

This example shows the color as background, it is applied via the CSS property "background".

To optimize and compress your CSS code, you can use our [online CSS compressor and optimizer](#) based on csstidy. If you want to create a linear or radial gradient as background or border, check our [CSS Gradient Generator](#).



Hey! You found this booklet interesting? Support Converting Colors with the new Membership Option!

The pro membership hides all ads, plus gives you double the colors in the color bucket, and more awesome pro features!

**[Learn more, Memberships starting at \\$2.50/m!](#)**

**Follow me  
on Twitter!**

@ConvertingColor