

Converting Colors

Decimal(14732496)

Have a look what the booklet for
Decimal(14732496) contains.

Decimal(14732496)	3
<i>Conversions</i>	4
<i>Details</i>	6
<i>Harmonies</i>	11
<i>Previews</i>	23
<i>Color Blindness Simulation</i>	26
<i>CSS Examples</i>	29

Color

Decimal(14732496)

Conversions

Conversions Part 1

Format	Color
Hex	E0CCD0
RGB	224, 204, 208
RGB Percent	88%, 80%, 82%
CMY	0.1216, 0.2000, 0.1843
CMYK	0.00, 0.09, 0.07, 0.12
HSL	348°, 24%, 84%
HSV	348°, 9%, 88%
XYZ	63.7185, 63.5871, 68.5897
YIQ	210.4360, 10.6360, 5.4840

Conversions

Conversions Part 2

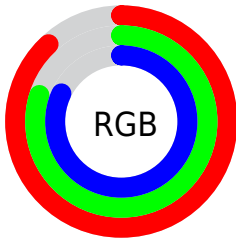
Format	Color
RYB	224, 204, 208
Decimal	14732496
CIELab	83.75, 7.64, 0.54
CIELCh	84, 7.662, 4.014
Yxy	63.5871, 0.3253, 0.3246
Android (android.graphics.Color)	4292922576 (0xFFE0CCD0)
YUV	210.4360, -1.2009, 11.8956
Hunter-Lab	79.7415, 3.0851, 4.8207

Details

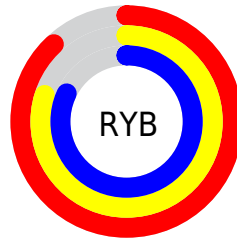
The Decimal color **14732496** is a light color, and the websafe version is hex **CCCCCC**. A complement of this color would be **13426908**, and the grayscale version is **13816530**.

A 20% lighter version of the original color is **16777215**, and **11114138** is the 20% darker color. If you saturate the color by 10%, you get **14726846**, and if you desaturate by 10%, it is **14738146**.

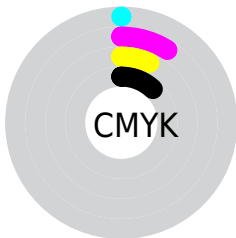
Distribution



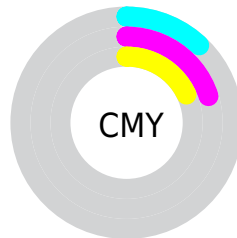
- Red (88%)
- Green (80%)
- Blue (82%)



- Red (88%)
- Yellow (80%)
- Blue (82%)



- Cyan (0%)
- Magenta (9%)
- Yellow (7%)
- Black (12%)



- Cyan (12%)
- Magenta (20%)
- Yellow (18%)

Brightness & Saturation Gradients

These gradients show how the Decimal color 14732496 changes by changing the brightness by 10 percent. The first figure shows a shift by +10% for each color and the second figure -10%.

Similar to the brightness gradients but the following saturation gradients show a change of the Decimal color 14732496 by changing the saturation by 10% instead.

■ 14732496

16777215

■ 14732496

■ 12890548

■ 11114138

■ 9337984

■ 7693159

■ 6048591

■ 4470072

■ 3022627

■ 1705997

■ 0

 14732496

 14732496

 14726846

 14738146

 14720940

 14744052

 14715290

 14745599

 14709384

 14703734

 14698084

 14692179

 14686529

 14680623

Harmonies

Analogous

The Analogous color harmony consists of three colors that are next to each other on the color wheel.



14405079



14732496



14732745

Triad

The Triadic color harmony groups three colors that are evenly spaced from another and form a triangle on the color wheel.



14732496



13554629



12833757

Complementary

The Complementary color scheme is a pair of colors which are on the opposite of each other on the color wheel.



14732496



13426908

Split Complementary

Split-complementary colors differ from the complementary color scheme. The scheme consists of three colors, the original color and two neighbors of the complement color.



12572121



14732496



13030858

Square

The Square scheme is like the rectangle color scheme, but the four colors are evenly spaced on the color wheel.



14732496



14078402



12637649



13357535

Rectangle

The Rectangle color scheme consists of four colors that form a rectangle on the color wheel.



14732496



14601925



12637649



12702940

Sweetspot

The Sweet Spot groups the original color and five complimentary colors.



14732496



16775161



14470368



8419963



0



8421504

Same Dimension

The Same Dimension uses a secret algorithm to generate beautiful new colors.



14732496



16770025



14734028



7365991



11534371



3145738

Inverse Universe

The Inverse Universe completely reimagines the original color for something new.



14732496



16770025



13425376



7365991



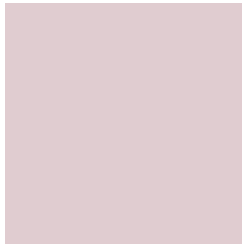
11534371



3145738

Previews

White Background



This preview shows how the Decimal color 14732496 looks on a white background.

Color Contrast Check

Large Text (above 18pt) WCAG AA × Fail

Any Text WCAG AA × Fail

Large Text (above 18pt) WCAG AAA × Fail

Any Text WCAG AAA × Fail

Black Background



This preview shows how the Decimal color 14732496 looks on a black background.

Color Contrast Check

Large Text (above 18pt) WCAG AA ✓ Pass

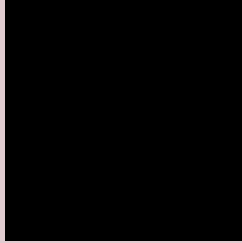
Any Text WCAG AA ✓ Pass

Large Text (above 18pt) WCAG AAA ✓ Pass

Any Text WCAG AAA ✓ Pass

If you want to check with other color combinations, try the [Color Contrast Checker](#).

Decimal 14732496 Background



This preview shows how black text looks on a background with the Decimal color 14732496.



This preview shows how white text looks on a background with the Decimal color 14732496.

Color Blindness Simulation

Color vision deficiency is a very complex topic, and I could not describe the different causes any better than Wikipedia does, so if you want to learn more, you should check out their [article about color blindness](#).

Dichromacy





Tritanopia
14797530

Trichromacy



Original Color
14732496

Protanomaly
14208977

Deuteranomaly
14928848

Tritanomaly
14797782

Monochromacy



Original Color
14732496

Achromatopsia
13816530

Achromatomaly
14143697

CSS Examples

Text

The CSS property to change the color of the text to Decimal 14732496 is called "color". The color property can be set on classes, ids or directly on the HTML element.

This example shows how text in the color #E0CCD0 looks like.

```
.text, #text, p{  
    color:#E0CCD0  
}
```

If you want to add a text shadow in that color use the text-shadow property, you can generate a text shadow directly with our [CSS Text Shadow Generator](#).

Here you see how black text with a 4 pixel #E0CCD0 colored shadow looks like.

```
.shadow{ text-shadow: 4px 4px 2px #E0CCD0
}
```

Border

The CSS property to change the border of an element to Decimal 14732496 is called "border". The border property can be set on classes, ids or directly on the HTML element.

This example shows the color as border, it can be applied via the CSS property "border" or "border-color".

```
.border, #border, table{ border:4px solid
#E0CCD0 }
```

If only the border color should be changed use the property `border-color`.

```
.border{ border-color:#E0CCD0 }
```

If you want to add a box shadow in that color use:

Here you see how a box with a 4 pixel #E0CCD0 colored shadow looks like.

```
.boxshadow{ -moz-box-shadow:4px 4px 4px  
4px #E0CCD0; -webkit-box-shadow:4px 4px  
4px 4px #E0CCD0; box-shadow:4px 4px 4px  
4px #E0CCD0 }
```

Background

The CSS property to change the background color of an element to Decimal 14732496 is called "background". The background property can be set on classes, ids or directly on the HTML element.

```
.background, #background, body{  
background:#E0CCD0 }
```

If only the background color should be changed can be used:

```
.background{ background-color:#E0CCD0 }
```

This example shows the color as background, it is applied via the CSS property "background".

To optimize and compress your CSS code, you can use our [online CSS compressor and optimizer](#) based on csstidy. If you want to create a linear or radial gradient as background or border, check our [CSS Gradient Generator](#).

Hey! You found this booklet interesting? Support Converting Colors with the new Membership Option!

The pro membership hides all ads, plus gives you double the colors in the color bucket, and more awesome pro features!

[Learn more, Memberships starting at \\$2.50/m!](#)

**Follow me
on Twitter!**

@ConvertingColor