

Converting Colors

Decimal(14733781)

Have a look what the booklet for
Decimal(14733781) contains.

Decimal(14733781)	3
<i>Conversions</i>	4
<i>Details</i>	6
<i>Harmonies</i>	11
<i>Previews</i>	23
<i>Color Blindness Simulation</i>	26
<i>CSS Examples</i>	29

Color

Decimal(14733781)

Conversions

Conversions Part 1

Format	Color
Hex	E0D1D5
RGB	224, 209, 213
RGB Percent	88%, 82%, 84%
CMY	0.1216, 0.1804, 0.1647
CMYK	0.00, 0.07, 0.05, 0.12
HSL	344°, 19%, 85%
HSV	344°, 7%, 88%
XYZ	65.5512, 66.2523, 72.2838
YIQ	213.9410, 7.6560, 4.4240

Conversions

Conversions Part 2

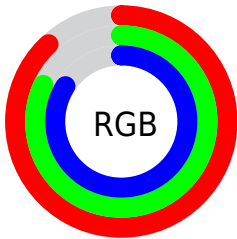
Format	Color
R_{YB}	224, 209, 213
Decimal	14733781
CIE Lab	85.12, 5.87, -0.12
CIE LCh	85, 5.875, 358.851
Yxy	66.2523, 0.3212, 0.3246
Android (android.graphics.Color)	4292923861 (0xFFE0D1D5)
YUV	213.9410, -0.4639, 8.8217
Hunter-Lab	81.3955, 1.3112, 4.3240

Details

The Decimal color **14733781** is a light color, and the websafe version is hex **CCCCCC**. A complement of this color would be **13754588**, and the grayscale version is **14079702**.

A 20% lighter version of the original color is **16777215**, and **11115422** is the 20% darker color. If you saturate the color by 10%, you get **14728133**, and if you desaturate by 10%, it is **14739429**.

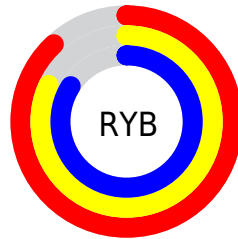
Distribution



Red (88%)

Green (82%)

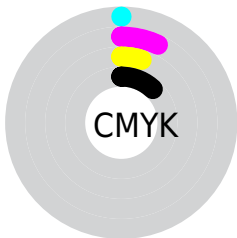
Blue (84%)



Red (88%)

Yellow (82%)

Blue (84%)

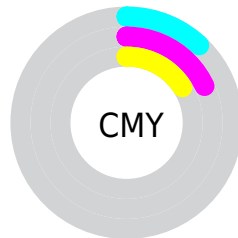


Cyan (0%)

Magenta (7%)

Yellow (5%)

Black (12%)



Cyan (12%)

Magenta (18%)

Yellow (16%)

Brightness & Saturation Gradients

These gradients show how the Decimal color 14733781 changes by changing the brightness by 10 percent. The first figure shows a shift by +10% for each color and the second figure -10%.

Similar to the brightness gradients but the following saturation gradients show a change of the Decimal color 14733781 by changing the saturation by 10% instead.

■ 14733781

16777215

■ 14733781

■ 12891577

■ 11115422

■ 9339268

■ 7694443

■ 6049619

■ 4471100

■ 3023654

■ 1707538

■ 0

 14733781

 14733781

 14728133

 14739429

 14722228

 14745334

 14716580

 14745599

 14710675

 14705027

 14699378

 14693474

 14687826

 14681921

Harmonies

Analogous

The Analogous color harmony consists of three colors that are next to each other on the color wheel.



14471898



14733781



14799311

Triad

The Triadic color harmony groups three colors that are evenly spaced from another and form a triangle on the color wheel.



14733781



13883083



13293534

Complementary

The Complementary color scheme is a pair of colors which are on the opposite of each other on the color wheel.



14733781



13754588

Split Complementary

Split-complementary colors differ from the complementary color scheme. The scheme consists of three colors, the original color and two neighbors of the complement color.



13097178



14733781



13490127

Square

The Square scheme is like the rectangle color scheme, but the four colors are evenly spaced on the color wheel.



14733781



14341322



13228244



13620704

Rectangle

The Rectangle color scheme consists of four colors that form a rectangle on the color wheel.



14733781



14734028



13228244



13162461

Sweetspot

The Sweet Spot groups the original color and five complimentary colors.



14733781



16775931



14471648



8420734



0



8421504

Same Dimension

The Same Dimension uses a secret algorithm to generate beautiful new colors.



14733781



16772080



14734545



7365992



11534383



3145741

Inverse Universe

The Inverse Universe completely reimagines the original color for something new.



14733781



16772080



13753824



7365992



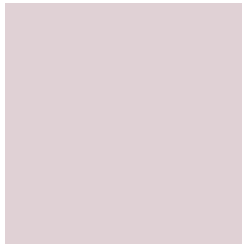
11534383



3145741

Previews

White Background



This preview shows how the Decimal color 14733781 looks on a white background.

Color Contrast Check

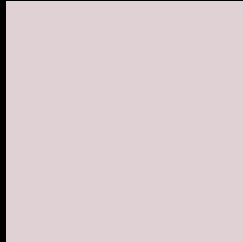
Large Text (above 18pt) WCAG AA × Fail

Any Text WCAG AA × Fail

Large Text (above 18pt) WCAG AAA × Fail

Any Text WCAG AAA × Fail

Black Background



This preview shows how the Decimal color 14733781 looks on a black background.

Color Contrast Check

Large Text (above 18pt) WCAG AA ✓ Pass

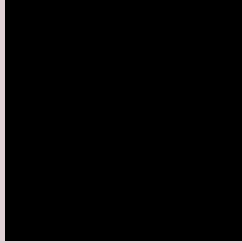
Any Text WCAG AA ✓ Pass

Large Text (above 18pt) WCAG AAA ✓ Pass

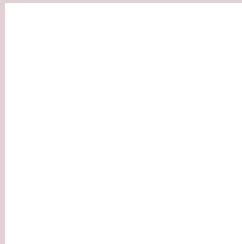
Any Text WCAG AAA ✓ Pass

If you want to check with other color combinations, try the [Color Contrast Checker](#).

Decimal 14733781 Background



This preview shows how black text looks on a background with the Decimal color 14733781.



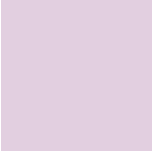
This preview shows how white text looks on a background with the Decimal color 14733781.

Color Blindness Simulation

Color vision deficiency is a very complex topic, and I could not describe the different causes any better than Wikipedia does, so if you want to learn more, you should check out their [article about color blindness](#).

Dichromacy





Tritanopia
14864352

Trichromacy



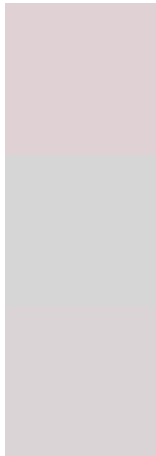
Original Color
14733781

Protanomaly
14406614

Deuteranomaly
15126486

Tritanomaly
14799068

Monochromacy



Original Color
14733781

Achromatopsia
14079702

Achromatomaly
14341334

CSS Examples

Text

The CSS property to change the color of the text to Decimal 14733781 is called "color". The color property can be set on classes, ids or directly on the HTML element.

This example shows how text in the color #E0D1D5 looks like.

```
.text, #text, p{  
  color:#E0D1D5  
}
```

If you want to add a text shadow in that color use the text-shadow property, you can generate a text shadow directly with our [CSS Text Shadow Generator](#).

Here you see how black text with a 4 pixel #E0D1D5 colored shadow looks like.

```
.shadow{ text-shadow: 4px 4px 2px #E0D1D5
}
```

Border

The CSS property to change the border of an element to Decimal 14733781 is called "border". The border property can be set on classes, ids or directly on the HTML element.

This example shows the color as border, it can be applied via the CSS property "border" or "border-color".

```
.border, #border, table{ border:4px solid
#E0D1D5 }
```

If only the border color should be changed use the property `border-color`.

```
.border{ border-color:#E0D1D5 }
```

If you want to add a box shadow in that color use:

Here you see how a box with a 4 pixel #E0D1D5 colored shadow looks like.

```
.boxshadow{ -moz-box-shadow:4px 4px 4px  
4px #E0D1D5; -webkit-box-shadow:4px 4px  
4px 4px #E0D1D5; box-shadow:4px 4px 4px  
4px #E0D1D5 }
```

Background

The CSS property to change the background color of an element to Decimal 14733781 is called "background". The background property can be set on classes, ids or directly on the HTML element.

```
.background, #background, body{  
background:#E0D1D5 }
```

If only the background color should be changed can be used:

```
.background{ background-color:#E0D1D5 }
```

This example shows the color as background, it is applied via the CSS property "background".

To optimize and compress your CSS code, you can use our [online CSS compressor and optimizer](#) based on csstidy. If you want to create a linear or radial gradient as background or border, check our [CSS Gradient Generator](#).

Hey! You found this booklet interesting? Support Converting Colors with the new Membership Option!

The pro membership hides all ads, plus gives you double the colors in the color bucket, and more awesome pro features!

[Learn more, Memberships starting at \\$2.50/m!](#)

**Follow me
on Twitter!**

@ConvertingColor