

Converting Colors

Decimal(14763398)

Have a look what the booklet for
Decimal(14763398) contains.

Decimal(14763398)	3
<i>Conversions</i>	4
<i>Details</i>	6
<i>Harmonies</i>	11
<i>Previews</i>	23
<i>Color Blindness Simulation</i>	26
<i>CSS Examples</i>	29

Color

Decimal(14763398)

Conversions

Conversions Part 1

Format	Color
Hex	E14586
RGB	225, 69, 134
RGB Percent	88%, 27%, 53%
CMY	0.1176, 0.7294, 0.4745
CMYK	0.00, 0.69, 0.40, 0.12
HSL	335°, 72%, 58%
HSV	335°, 69%, 88%
XYZ	37.4825, 21.9850, 24.8222
YIQ	123.0540, 72.1110, 53.2870

Conversions

Conversions Part 2

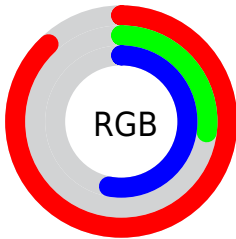
Format	Color
R_{YB}	225, 69, 134
Decimal	14763398
CIE _{Lab}	54.01, 64.89, -1.47
CIE _{LCh}	54, 64.907, 358.704
Yxy	21.9850, 0.4447, 0.2608
Android (android.graphics.Color)	4292953478 (0xFFE14586)
YUV	123.0540, 5.3964, 89.4066
Hunter-Lab	46.8882, 60.6390, 1.4341

Details

The Decimal color **14763398** is a dark color, and the websafe version is hex **FF6699**. The color can be described as middle muted rose. A complement of this color would be **4579744**, and the grayscale version is **8092539**.

A 20% lighter version of the original color is **16744379**, and **10813525** is the 20% darker color. If you saturate the color by 10%, you get **14757497**, and if you desaturate by 10%, it is **14769043**.

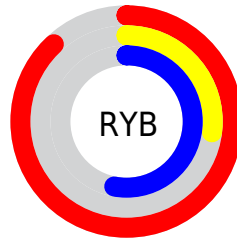
Distribution



Red (88%)

Green (27%)

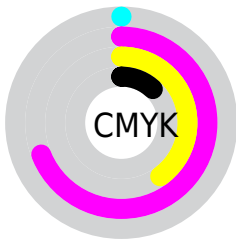
Blue (53%)



Red (88%)

Yellow (27%)

Blue (53%)

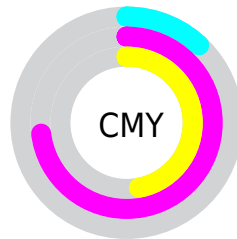


Cyan (0%)

Magenta (69%)

Yellow (40%)

Black (12%)



Cyan (12%)

Magenta (73%)

Yellow (47%)

Brightness & Saturation Gradients


These gradients show how the Decimal color 14763398 changes by changing the brightness by 10 percent. The first figure shows a shift by +10% for each color and the second figure -10%.

Similar to the brightness gradients but the following saturation gradients show a change of the Decimal color 14763398 by changing the saturation by 10% instead.

 14763398  14763398

16777215  12788589

 16744379  10813525

 16751831  8847422

 16759283  6946856

 16766719  5111828

 16774399  3211266

 0

 14763398  14763398

 14757497  14769043

 14751852

 14774944

 14745951

 14780589

 14745694

 14786490

 14792136

 14798037

 14803938

 14809583

 14811132

Harmonies

Analogous

The Analogous color harmony consists of three colors that are next to each other on the color wheel.



12671164



14763398



14765647

Triad

The Triadic color harmony groups three colors that are evenly spaced from another and form a triangle on the color wheel.



14763398



6720771



38369

Complementary

The Complementary color scheme is a pair of colors which are on the opposite of each other on the color wheel.



14763398



4579744

Split Complementary

Split-complementary colors differ from the complementary color scheme. The scheme consists of three colors, the original color and two neighbors of the complement color.



39606



14763398



38467

Square

The Square scheme is like the rectangle color scheme, but the four colors are evenly spaced on the color wheel.



14763398



10321408



39549



35314

Rectangle

The Rectangle color scheme consists of four colors that form a rectangle on the color wheel.



14763398



13786669



39549



39125

Sweetspot

The Sweet Spot groups the original color and five complimentary colors.



14763398



16763360



10503649



8413293



0



8421504

Same Dimension

The Same Dimension uses a secret algorithm to generate beautiful new colors.



14763398



16722820



14766661



7365994



11534409



3145748

Inverse Universe

The Inverse Universe completely reimagines the original color for something new.



14763398



16722820



4576481



7365994



11534409



3145748

Previews

White Background



This preview shows how the Decimal color 14763398 looks on a white background.

Color Contrast Check

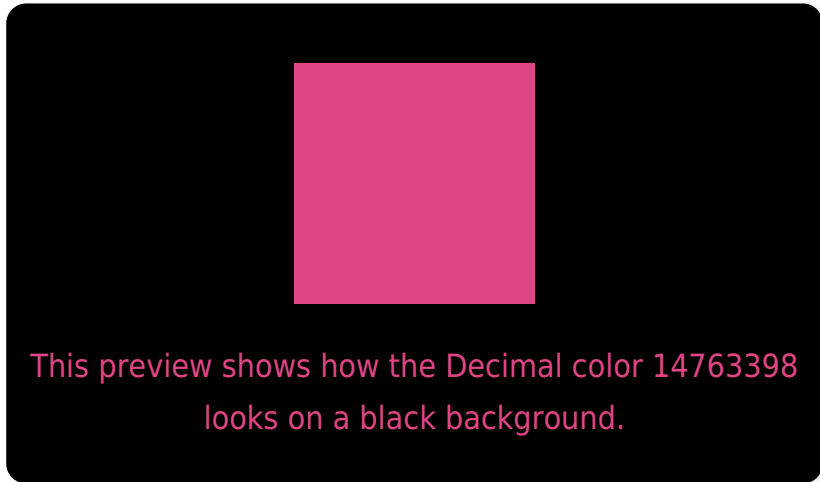
Large Text (above 18pt) WCAG AA ✓ Pass

Any Text WCAG AA × Fail

Large Text (above 18pt) WCAG AAA × Fail

Any Text WCAG AAA × Fail

Black Background



Color Contrast Check

Large Text (above 18pt) WCAG AA ✓ Pass

Any Text WCAG AA ✓ Pass

Large Text (above 18pt) WCAG AAA ✓ Pass

Any Text WCAG AAA × Fail

If you want to check with other color combinations, try the [Color Contrast Checker](#).

Decimal 14763398 Background



This preview shows how black text looks on a background with the Decimal color 14763398.




This preview shows how white text looks on a background with the Decimal color 14763398.

Color Blindness Simulation

Color vision deficiency is a very complex topic, and I could not describe the different causes any better than Wikipedia does, so if you want to learn more, you should check out their [article about color blindness](#).

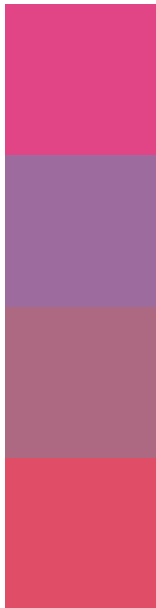
Dichromacy





Tritanopia
14569813

Trichromacy



Original Color
14763398

Protanomaly
10316702

Deuteranomaly
11364737

Tritanomaly
14634343

Monochromacy



Original Color
14763398

Achromatopsia
8092539

Achromatomaly
10512255

CSS Examples

Text

The CSS property to change the color of the text to Decimal 14763398 is called "color". The color property can be set on classes, ids or directly on the HTML element.

This example shows how text in the color #E14586 looks like.

```
.text, #text, p{  
  color:#E14586  
}
```

If you want to add a text shadow in that color use the text-shadow property, you can generate a text shadow directly with our [CSS Text Shadow Generator](#).

Here you see how black text with a 4 pixel #E14586 colored shadow looks like.

```
.shadow{ text-shadow: 4px 4px 2px #E14586
}
```

Border

The CSS property to change the border of an element to Decimal 14763398 is called "border". The border property can be set on classes, ids or directly on the HTML element.

This example shows the color as border, it can be applied via the CSS property "border" or "border-color".

```
.border, #border, table{ border:4px solid
#E14586 }
```

If only the border color should be changed use the property `border-color`.

```
.border{ border-color:#E14586 }
```

If you want to add a box shadow in that color use:

Here you see how a box with a 4 pixel #E14586 colored shadow looks like.

```
.boxshadow{ -moz-box-shadow:4px 4px 4px  
4px #E14586; -webkit-box-shadow:4px 4px  
4px 4px #E14586; box-shadow:4px 4px 4px  
4px #E14586 }
```

Background

The CSS property to change the background color of an element to Decimal 14763398 is called "background". The background property can be set on classes, ids or directly on the HTML element.

```
.background, #background, body{  
background:#E14586 }
```

If only the background color should be changed can be used:

```
.background{ background-color:#E14586 }
```

This example shows the color as background, it is applied via the CSS property "background".

To optimize and compress your CSS code, you can use our [online CSS compressor and optimizer](#) based on csstidy. If you want to create a linear or radial gradient as background or border, check our [CSS Gradient Generator](#).

Hey! You found this booklet interesting? Support Converting Colors with the new Membership Option!

The pro membership hides all ads, plus gives you double the colors in the color bucket, and more awesome pro features!

[Learn more, Memberships starting at \\$2.50/m!](#)

**Follow me
on Twitter!**

@ConvertingColor