

Converting Colors

Decimal(14780313)

Have a look what the booklet for
Decimal(14780313) contains.

Decimal(14780313)	3
<i>Conversions</i>	4
<i>Details</i>	6
<i>Harmonies</i>	11
<i>Previews</i>	23
<i>Color Blindness Simulation</i>	26
<i>CSS Examples</i>	29

Color

Decimal(14780313)

Conversions

Conversions Part 1

Format	Color
Hex	E18799
RGB	225, 135, 153
RGB Percent	88%, 53%, 60%
CMY	0.1176, 0.4706, 0.4000
CMYK	0.00, 0.40, 0.32, 0.12
HSL	348°, 60%, 71%
HSV	348°, 40%, 88%
XYZ	45.4651, 35.6354, 34.6190
YIQ	163.9620, 47.8620, 24.6780

Conversions

Conversions Part 2

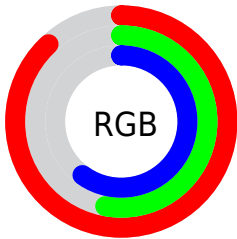
Format	Color
R_{YB}	225, 135, 153
Decimal	14780313
CIE _{Lab}	66.24, 36.55, 5.29
CIE _{LCh}	66, 36.932, 8.233
Yxy	35.6354, 0.3929, 0.3079
Android (android.graphics.Color)	4292970393 (0xFFE18799)
YUV	163.9620, -5.4043, 53.5303
Hunter-Lab	59.6954, 31.4818, 7.4028

Details

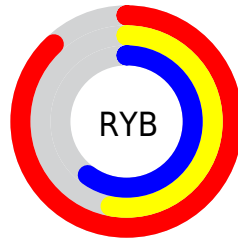
The Decimal color **14780313** is a light color, and the websafe version is hex **FF9999**. A complement of this color would be **8905167**, and the grayscale version is **10790052**.

A 20% lighter version of the original color is **16760271**, and **10965862** is the 20% darker color. If you saturate the color by 10%, you get **14774663**, and if you desaturate by 10%, it is **14785963**.

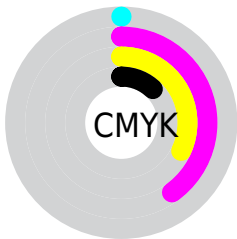
Distribution



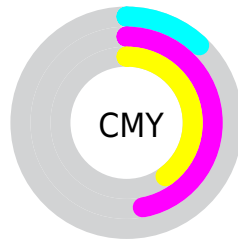
- Red (88%)
- Green (53%)
- Blue (60%)



- Red (88%)
- Yellow (53%)
- Blue (60%)



- Cyan (0%)
- Magenta (40%)
- Yellow (32%)
- Black (12%)



- Cyan (12%)
- Magenta (47%)
- Yellow (40%)

Brightness & Saturation Gradients

These gradients show how the Decimal color 14780313 changes by changing the brightness by 10 percent. The first figure shows a shift by +10% for each color and the second figure -10%.

Similar to the brightness gradients but the following saturation gradients show a change of the Decimal color 14780313 by changing the saturation by 10% instead.

 14780313

 14780313

16777215

 12873087

 16760271

 10965862

 16767723

 9124430

 16775167

 7348536

 5571618

 3932172

 2228225

 0

 14780313

 14780313

 14774663

 14785963

 14768757

 14791869

 14763107

 14797775

 14757201

 14803425

 14751295

 14809331

 14745645

 14811135

Harmonies

Analogous

The Analogous color harmony consists of three colors that are next to each other on the color wheel.



13798330



14780313



14584954

Triad

The Triadic color harmony groups three colors that are evenly spaced from another and form a triangle on the color wheel.



14780313



9087852



4434910

Complementary

The Complementary color scheme is a pair of colors which are on the opposite of each other on the color wheel.



14780313



8905167

Split Complementary

Split-complementary colors differ from the complementary color scheme. The scheme consists of three colors, the original color and two neighbors of the complement color.



45513



14780313



6402439

Square

The Square scheme is like the rectangle color scheme, but the four colors are evenly spaced on the color wheel.



14780313



11444830



3126185



8430050

Rectangle

The Rectangle color scheme consists of four colors that form a rectangle on the color wheel.



14780313



13865834



3126185



2993881

Sweetspot

The Sweet Spot groups the original color and five complimentary colors.



14780313



16769255



13600737



8416881



0



8421504

Same Dimension

The Same Dimension uses a secret algorithm to generate beautiful new colors.



14780313



16745885



14787207



7365991



11534371



3145738

Inverse Universe

The Inverse Universe completely reimagines the original color for something new.



14780313



16745885



8898273



7365991



11534371



3145738

Previews

White Background



This preview shows how the Decimal color 14780313 looks on a white background.

Color Contrast Check

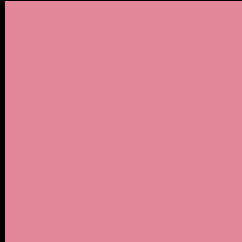
Large Text (above 18pt) WCAG AA × Fail

Any Text WCAG AA × Fail

Large Text (above 18pt) WCAG AAA × Fail

Any Text WCAG AAA × Fail

Black Background



This preview shows how the Decimal color 14780313 looks on a black background.

Color Contrast Check

Large Text (above 18pt) WCAG AA ✓ Pass

Any Text WCAG AA ✓ Pass

Large Text (above 18pt) WCAG AAA ✓ Pass

Any Text WCAG AAA ✓ Pass

If you want to check with other color combinations, try the [Color Contrast Checker](#).

Decimal 14780313 Background



This preview shows how black text looks on a background with the Decimal color 14780313.



This preview shows how white text looks on a background with the Decimal color 14780313.

Color Blindness Simulation

Color vision deficiency is a very complex topic, and I could not describe the different causes any better than Wikipedia does, so if you want to learn more, you should check out their [article about color blindness](#).

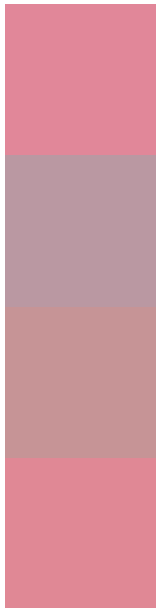
Dichromacy





Tritanopia
14715026

Trichromacy



Original Color
14780313

Protanomaly
12228770

Deuteranomaly
13014166

Tritanomaly
14715029

Monochromacy



Original Color
14780313

Achromatopsia
10790052

Achromatomaly
12229024

CSS Examples

Text

The CSS property to change the color of the text to Decimal 14780313 is called "color". The color property can be set on classes, ids or directly on the HTML element.

This example shows how text in the color #E18799 looks like.

```
.text, #text, p{  
    color:#E18799  
}
```

If you want to add a text shadow in that color use the text-shadow property, you can generate a text shadow directly with our [CSS Text Shadow Generator](#).

Here you see how black text with a 4 pixel #E18799 colored shadow looks like.

```
.shadow{ text-shadow: 4px 4px 2px #E18799
}
```

Border

The CSS property to change the border of an element to Decimal 14780313 is called "border". The border property can be set on classes, ids or directly on the HTML element.

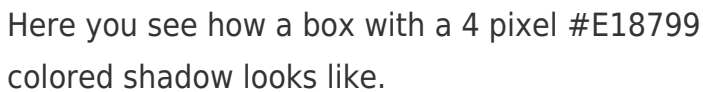
This example shows the color as border, it can be applied via the CSS property "border" or "border-color".

```
.border, #border, table{ border:4px solid
#E18799 }
```

If only the border color should be changed use the property `border-color`.

```
.border{ border-color:#E18799 }
```

If you want to add a box shadow in that color use:



Here you see how a box with a 4 pixel #E18799 colored shadow looks like.

```
.boxshadow{ -moz-box-shadow:4px 4px 4px  
4px #E18799; -webkit-box-shadow:4px 4px  
4px 4px #E18799; box-shadow:4px 4px 4px  
4px #E18799 }
```

Background

The CSS property to change the background color of an element to Decimal 14780313 is called "background". The background property can be set on classes, ids or directly on the HTML element.

```
.background, #background, body{  
background:#E18799 }
```

If only the background color should be changed can be used:

```
.background{ background-color:#E18799 }
```

This example shows the color as background, it is applied via the CSS property "background".

To optimize and compress your CSS code, you can use our [online CSS compressor and optimizer](#) based on csstidy. If you want to create a linear or radial gradient as background or border, check our [CSS Gradient Generator](#).

Hey! You found this booklet interesting? Support Converting Colors with the new Membership Option!

The pro membership hides all ads, plus gives you double the colors in the color bucket, and more awesome pro features!

[Learn more, Memberships starting at \\$2.50/m!](#)

**Follow me
on Twitter!**

@ConvertingColor