

Converting Colors

Decimal(14780567)

Have a look what the booklet for
Decimal(14780567) contains.

Decimal(14780567)	3
<i>Conversions</i>	4
<i>Details</i>	6
<i>Harmonies</i>	11
<i>Previews</i>	23
<i>Color Blindness Simulation</i>	26
<i>CSS Examples</i>	29

Color

Decimal(14780567)

Conversions

Conversions Part 1

Format	Color
Hex	E18897
RGB	225, 136, 151
RGB Percent	88%, 53%, 59%
CMY	0.1176, 0.4667, 0.4078
CMYK	0.00, 0.40, 0.33, 0.12
HSL	350°, 60%, 71%
HSV	350°, 40%, 88%
XYZ	45.4414, 35.8502, 33.8029
YIQ	164.3210, 48.2290, 23.5330

Conversions

Conversions Part 2

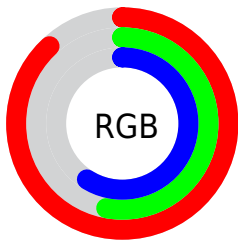
Format	Color
R_{YB}	225, 136, 151
Decimal	14780567
CIE _{Lab}	66.41, 35.77, 6.65
CIE _{LCh}	66, 36.386, 10.538
Yxy	35.8502, 0.3948, 0.3115
Android (android.graphics.Color)	4292970647 (0xFFE18897)
YUV	164.3210, -6.5673, 53.2155
Hunter-Lab	59.8751, 30.6889, 8.4399

Details

The Decimal color **14780567** is a light color, and the websafe version is hex **FF9999**. A complement of this color would be **8970706**, and the grayscale version is **10790052**.

A 20% lighter version of the original color is **16760525**, and **10966116** is the 20% darker color. If you saturate the color by 10%, you get **14774916**, and if you desaturate by 10%, it is **14786474**.

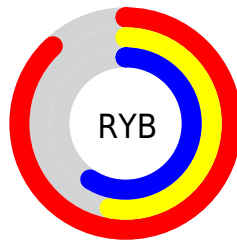
Distribution



Red (88%)

Green (53%)

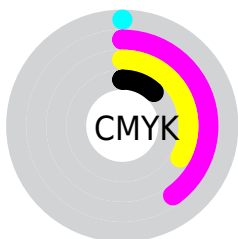
Blue (59%)



Red (88%)

Yellow (53%)

Blue (59%)

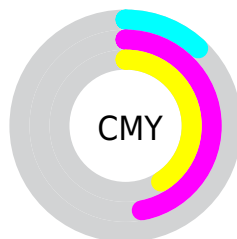


Cyan (0%)

Magenta (40%)

Yellow (33%)

Black (12%)



Cyan (12%)

Magenta (47%)

Yellow (41%)

Brightness & Saturation Gradients

These gradients show how the Decimal color 14780567 changes by changing the brightness by 10 percent. The first figure shows a shift by +10% for each color and the second figure -10%.

Similar to the brightness gradients but the following saturation gradients show a change of the Decimal color 14780567 by changing the saturation by 10% instead.

 14780567

 14780567

16777215

 12873341

 16760525

 10966116

 16767977

 9124684

 16775423

 7348790

 5572129

 3932169

 2228225

 0

 14780567

 14780567

 14774916

 14786474

 14769010

 14792124

 14763103

 14797775

 14757452

 14803682

 14751801

 14809333

 14745895

 14811135

 14745638

Harmonies

Analogous

The Analogous color harmony consists of three colors that are next to each other on the color wheel.



13929400



14780567



14454393

Triad

The Triadic color harmony groups three colors that are evenly spaced from another and form a triangle on the color wheel.



14780567



8957039



5024734

Complementary

The Complementary color scheme is a pair of colors which are on the opposite of each other on the color wheel.



14780567



8970706

Split Complementary

Split-complementary colors differ from the complementary color scheme. The scheme consists of three colors, the original color and two neighbors of the complement color.



1225163



14780567



6271371

Square

The Square scheme is like the rectangle color scheme, but the four colors are evenly spaced on the color wheel.



14780567



11314016



3126188



8757729

Rectangle

The Rectangle color scheme consists of four colors that form a rectangle on the color wheel.



14780567



13735017



3126188



3648986

Sweetspot

The Sweet Spot groups the original color and five complimentary colors.



14780567



16769254



13732065



8416881



0



8421504

Same Dimension

The Same Dimension uses a secret algorithm to generate beautiful new colors.



14780567



16746395



14787720



7365991



11534366



3145736

Inverse Universe

The Inverse Universe completely reimagines the original color for something new.



14780567



16746395



8963553



7365991



11534366



3145736

Previews

White Background



This preview shows how the Decimal color 14780567 looks on a white background.

Color Contrast Check

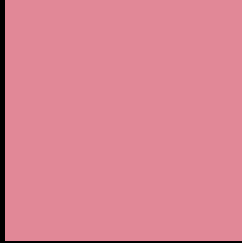
Large Text (above 18pt) WCAG AA × Fail

Any Text WCAG AA × Fail

Large Text (above 18pt) WCAG AAA × Fail

Any Text WCAG AAA × Fail

Black Background



This preview shows how the Decimal color 14780567 looks on a black background.

Color Contrast Check

Large Text (above 18pt) WCAG AA ✓ Pass

Any Text WCAG AA ✓ Pass

Large Text (above 18pt) WCAG AAA ✓ Pass

Any Text WCAG AAA ✓ Pass

If you want to check with other color combinations, try the [Color Contrast Checker](#).

Decimal 14780567 Background



This preview shows how black text looks on a background with the Decimal color 14780567.



This preview shows how white text looks on a background with the Decimal color 14780567.

Color Blindness Simulation

Color vision deficiency is a very complex topic, and I could not describe the different causes any better than Wikipedia does, so if you want to learn more, you should check out their [article about color blindness](#).

Dichromacy



Original Color
14780567

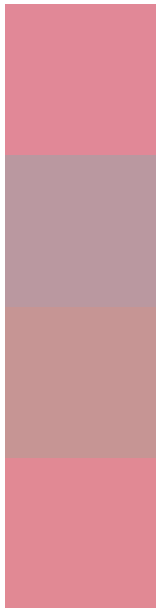
Protanopia
10789285

Deuteranopia
12033171



Tritanopia
14780819

Trichromacy



Original Color
14780567

Protanomaly
12228768

Deuteranomaly
13014420

Tritanomaly
14780820

Monochromacy



Original Color
14780567

Achromatopsia
10790052

Achromatomaly
12229279

CSS Examples

Text

The CSS property to change the color of the text to Decimal 14780567 is called "color". The color property can be set on classes, ids or directly on the HTML element.

This example shows how text in the color #E18897 looks like.

```
.text, #text, p{  
    color:#E18897  
}
```

If you want to add a text shadow in that color use the text-shadow property, you can generate a text shadow directly with our [CSS Text Shadow Generator](#).

Here you see how black text with a 4 pixel #E18897 colored shadow looks like.

```
.shadow{ text-shadow: 4px 4px 2px #E18897  
}
```

Border

The CSS property to change the border of an element to Decimal 14780567 is called "border". The border property can be set on classes, ids or directly on the HTML element.

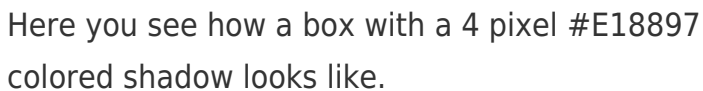
This example shows the color as border, it can be applied via the CSS property "border" or "border-color".

```
.border, #border, table{ border:4px solid  
#E18897 }
```

If only the border color should be changed use the property `border-color`.

```
.border{ border-color:#E18897 }
```

If you want to add a box shadow in that color use:



Here you see how a box with a 4 pixel #E18897 colored shadow looks like.

```
.boxshadow{ -moz-box-shadow:4px 4px 4px  
4px #E18897; -webkit-box-shadow:4px 4px  
4px 4px #E18897; box-shadow:4px 4px 4px  
4px #E18897 }
```

Background

The CSS property to change the background color of an element to Decimal 14780567 is called "background". The background property can be set on classes, ids or directly on the HTML element.

```
.background, #background, body{  
background:#E18897 }
```

If only the background color should be changed can be used:

```
.background{ background-color:#E18897 }
```

This example shows the color as background, it is applied via the CSS property "background".

To optimize and compress your CSS code, you can use our [online CSS compressor and optimizer](#) based on csstidy. If you want to create a linear or radial gradient as background or border, check our [CSS Gradient Generator](#).

Hey! You found this booklet interesting? Support Converting Colors with the new Membership Option!

The pro membership hides all ads, plus gives you double the colors in the color bucket, and more awesome pro features!

[Learn more, Memberships starting at \\$2.50/m!](#)

**Follow me
on Twitter!**

@ConvertingColor