

Converting Colors

Decimal(14786473)

Have a look what the booklet for
Decimal(14786473) contains.

Decimal(14786473)	3
<i>Conversions</i>	4
<i>Details</i>	6
<i>Harmonies</i>	11
<i>Previews</i>	23
<i>Color Blindness Simulation</i>	26
<i>CSS Examples</i>	29

Color

Decimal(14786473)

Conversions

Conversions Part 1

Format	Color
Hex	E19FA9
RGB	225, 159, 169
RGB Percent	88%, 62%, 66%
CMY	0.1176, 0.3765, 0.3373
CMYK	0.00, 0.29, 0.25, 0.12
HSL	351°, 52%, 75%
HSV	351°, 29%, 88%
XYZ	50.6109, 43.6684, 43.2975
YIQ	179.8740, 36.1260, 17.1020

Conversions

Conversions Part 2

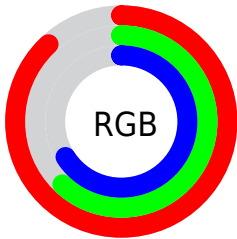
Format	Color
RYB	225, 159, 169
Decimal	14786473
CIELab	72.01, 25.93, 4.66
CIELCh	72, 26.343, 10.195
Yxy	43.6684, 0.3679, 0.3174
Android (android.graphics.Color)	4292976553 (0xFFE19FA9)
YUV	179.8740, -5.3609, 39.5755
Hunter-Lab	66.0821, 21.0659, 7.4102

Details

The Decimal color **14786473** is a light color, and the websafe version is hex **CC9999**. A complement of this color would be **10478039**, and the grayscale version is **11842740**.

A 20% lighter version of the original color is **16766688**, and **11037557** is the 20% darker color. If you saturate the color by 10%, you get **14780822**, and if you desaturate by 10%, it is **14792380**.

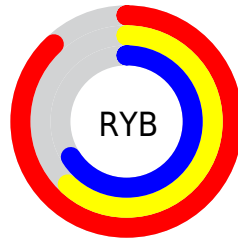
Distribution



Red (88%)

Green (62%)

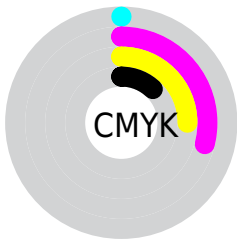
Blue (66%)



Red (88%)

Yellow (62%)

Blue (66%)

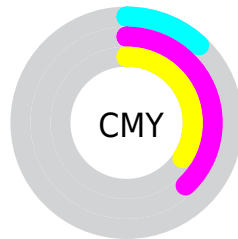


Cyan (0%)

Magenta (29%)

Yellow (25%)

Black (12%)



Cyan (12%)

Magenta (38%)

Yellow (34%)

Brightness & Saturation Gradients

These gradients show how the Decimal color 14786473 changes by changing the brightness by 10 percent. The first figure shows a shift by +10% for each color and the second figure -10%.

Similar to the brightness gradients but the following saturation gradients show a change of the Decimal color 14786473 by changing the saturation by 10% instead.

 14786473

 14786473

16777215

 12879247

 16766688

 11037557

 16774141

 9261660

 7486021

 5841711

 4131866

 2818048

 0

 14786473

 14786473

 14780822

 14792380

 14774915

 14798031

 14769264

 14803938

 14763357

 14809589

 14757706

 14811135

 14751798

 14746147

 14745634

Harmonies

Analogous

The Analogous color harmony consists of three colors that are next to each other on the color wheel.



14066113



14786473



14590611

Triad

The Triadic color harmony groups three colors that are evenly spaced from another and form a triangle on the color wheel.



14786473



10467467



8304605

Complementary

The Complementary color scheme is a pair of colors which are on the opposite of each other on the color wheel.



14786473



10478039

Split Complementary

Split-complementary colors differ from the complementary color scheme. The scheme consists of three colors, the original color and two neighbors of the complement color.



6995151



14786473



8699295

Square

The Square scheme is like the rectangle color scheme, but the four colors are evenly spaced on the color wheel.



14786473



12235393



7257784



10399967

Rectangle

The Rectangle color scheme consists of four colors that form a rectangle on the color wheel.



14786473



14067592



7257784



7715289

Sweetspot

The Sweet Spot groups the original color and five complimentary colors.



14786473



16771308



14065633



8417652



0



8421504

Same Dimension

The Same Dimension uses a secret algorithm to generate beautiful new colors.



14786473



16754355



14792095



7365991



11534363



3145735

Inverse Universe

The Inverse Universe completely reimagines the original color for something new.



14786473



16754355



10472417



7365991



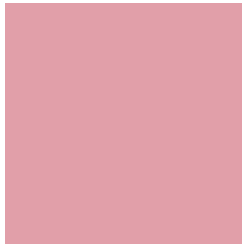
11534363



3145735

Previews

White Background



This preview shows how the Decimal color 14786473 looks on a white background.

Color Contrast Check

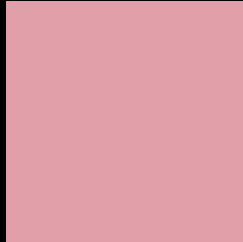
Large Text (above 18pt) WCAG AA × Fail

Any Text WCAG AA × Fail

Large Text (above 18pt) WCAG AAA × Fail

Any Text WCAG AAA × Fail

Black Background



This preview shows how the Decimal color 14786473 looks on a black background.

Color Contrast Check

Large Text (above 18pt) WCAG AA ✓ Pass

Any Text WCAG AA ✓ Pass

Large Text (above 18pt) WCAG AAA ✓ Pass

Any Text WCAG AAA ✓ Pass

If you want to check with other color combinations, try the [Color Contrast Checker](#).

Decimal 14786473 Background



This preview shows how black text looks on a background with the Decimal color 14786473.



This preview shows how white text looks on a background with the Decimal color 14786473.

Color Blindness Simulation

Color vision deficiency is a very complex topic, and I could not describe the different causes any better than Wikipedia does, so if you want to learn more, you should check out their [article about color blindness](#).

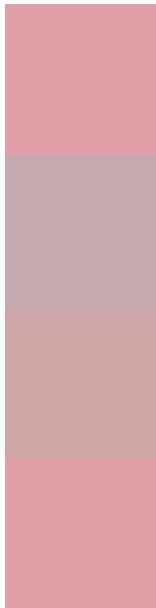
Dichromacy





Tritanopia
14786475

Trichromacy



Original Color
14786473

Protanomaly
12888751

Deuteranomaly
13674408

Tritanomaly
14786474

Monochromacy



Original Color
14786473

Achromatopsia
11842740

Achromatomaly
12889264

CSS Examples

Text

The CSS property to change the color of the text to Decimal 14786473 is called "color". The color property can be set on classes, ids or directly on the HTML element.

This example shows how text in the color #E19FA9 looks like.

```
.text, #text, p{  
    color:#E19FA9  
}
```

If you want to add a text shadow in that color use the text-shadow property, you can generate a text shadow directly with our [CSS Text Shadow Generator](#).

Here you see how black text with a 4 pixel #E19FA9 colored shadow looks like.

```
.shadow{ text-shadow: 4px 4px 2px #E19FA9  
}
```

Border

The CSS property to change the border of an element to Decimal 14786473 is called "border". The border property can be set on classes, ids or directly on the HTML element.

This example shows the color as border, it can be applied via the CSS property "border" or "border-color".

```
.border, #border, table{ border:4px solid  
#E19FA9 }
```

If only the border color should be changed use the property `border-color`.

```
.border{ border-color:#E19FA9 }
```

If you want to add a box shadow in that color use:

Here you see how a box with a 4 pixel #E19FA9 colored shadow looks like.

```
.boxshadow{ -moz-box-shadow:4px 4px 4px  
4px #E19FA9; -webkit-box-shadow:4px 4px  
4px 4px #E19FA9; box-shadow:4px 4px 4px  
4px #E19FA9 }
```

Background

The CSS property to change the background color of an element to Decimal 14786473 is called "background". The background property can be set on classes, ids or directly on the HTML element.

```
.background, #background, body{  
background:#E19FA9 }
```

If only the background color should be changed can be used:

```
.background{ background-color:#E19FA9 }
```

This example shows the color as background, it is applied via the CSS property "background".

To optimize and compress your CSS code, you can use our [online CSS compressor and optimizer](#) based on csstidy. If you want to create a linear or radial gradient as background or border, check our [CSS Gradient Generator](#).

Hey! You found this booklet interesting? Support Converting Colors with the new Membership Option!

The pro membership hides all ads, plus gives you double the colors in the color bucket, and more awesome pro features!

[Learn more, Memberships starting at \\$2.50/m!](#)

**Follow me
on Twitter!**

@ConvertingColor