

Converting Colors

Decimal(14786494)

Have a look what the booklet for
Decimal(14786494) contains.

Decimal(14786494)	3
<i>Conversions</i>	4
<i>Details</i>	6
<i>Harmonies</i>	11
<i>Previews</i>	23
<i>Color Blindness Simulation</i>	26
<i>CSS Examples</i>	29

Color

Decimal(14786494)

Conversions

Conversions Part 1

Format	Color
Hex	E19FBE
RGB	225, 159, 190
RGB Percent	88%, 62%, 75%
CMY	0.1176, 0.3765, 0.2549
CMYK	0.00, 0.29, 0.16, 0.12
HSL	332°, 52%, 75%
HSV	332°, 29%, 88%
XYZ	52.7437, 44.5215, 54.5288
YIQ	182.2680, 29.3850, 23.6330

Conversions

Conversions Part 2

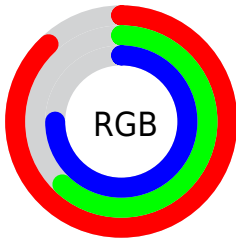
Format	Color
R _Y B	225, 159, 190
Decimal	14786494
CIE Lab	72.58, 29.09, -6.11
CIE LCh	73, 29.722, 348.141
Yxy	44.5215, 0.3475, 0.2933
Android (android.graphics.Color)	4292976574 (0xFFE19FBE)
YUV	182.2680, 3.8119, 37.4760
Hunter-Lab	66.7245, 24.3312, -1.7461

Details

The Decimal color **14786494** is a light color, and the websafe version is hex **CC99CC**. A complement of this color would be **10478018**, and the grayscale version is **11974326**.

A 20% lighter version of the original color is **16766710**, and **11103113** is the 20% darker color. If you saturate the color by 10%, you get **14780850**, and if you desaturate by 10%, it is **14792394**.

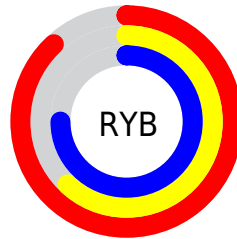
Distribution



Red (88%)

Green (62%)

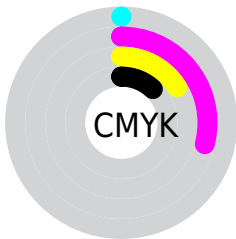
Blue (75%)



Red (88%)

Yellow (62%)

Blue (75%)

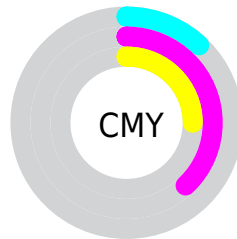


Cyan (0%)

Magenta (29%)

Yellow (16%)

Black (12%)



Cyan (12%)

Magenta (38%)

Yellow (25%)

Brightness & Saturation Gradients

These gradients show how the Decimal color 14786494 changes by changing the brightness by 10 percent. The first figure shows a shift by +10% for each color and the second figure -10%.

Similar to the brightness gradients but the following saturation gradients show a change of the Decimal color 14786494 by changing the saturation by 10% instead.

 14786494

 14786494

16777215

 12944547

 16766710

 11103113


 16774143

 9327215

 7551575

 5907008

 4262442

 2818070

 0

 14786494

 14786494

 14780850

 14792394

 14774950

 14798038

 14769306

 14803938

 14763406

 14809582

 14757762

 14811130

 14751862

 14811135

 14746218

 14745706

Harmonies

Analogous

The Analogous color harmony consists of three colors that are next to each other on the color wheel.



13280727



14786494



15310498

Triad

The Triadic color harmony groups three colors that are evenly spaced from another and form a triangle on the color wheel.



14786494



11843198



6471386

Complementary

The Complementary color scheme is a pair of colors which are on the opposite of each other on the color wheel.



14786494



10478018

Split Complementary

Split-complementary colors differ from the complementary color scheme. The scheme consists of three colors, the original color and two neighbors of the complement color.



6341058



14786494



9813133

Square

The Square scheme is like the rectangle color scheme, but the four colors are evenly spaced on the color wheel.



14786494



13610365



7848102



8435943

Rectangle

The Rectangle color scheme consists of four colors that form a rectangle on the color wheel.



14786494



15114642



7848102



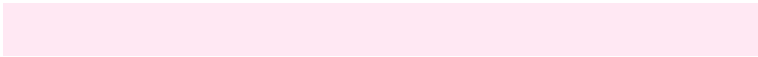
6144211

Sweetspot

The Sweet Spot groups the original color and five complimentary colors.



14786494



16771315



12689377



8417656



0



8421504

Same Dimension

The Same Dimension uses a secret algorithm to generate beautiful new colors.



14786494



16754384



14786719



7365994



11534419



3145751

Inverse Universe

The Inverse Universe completely reimagines the original color for something new.



14786494



16754384



10477793



7365994



11534419



3145751

Previews

White Background



This preview shows how the Decimal color 14786494 looks on a white background.

Color Contrast Check

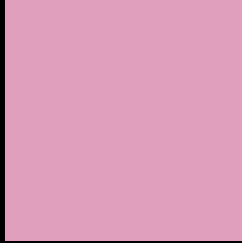
Large Text (above 18pt) WCAG AA × Fail

Any Text WCAG AA × Fail

Large Text (above 18pt) WCAG AAA × Fail

Any Text WCAG AAA × Fail

Black Background



This preview shows how the Decimal color 14786494 looks on a black background.

Color Contrast Check

Large Text (above 18pt) WCAG AA ✓ Pass

Any Text WCAG AA ✓ Pass

Large Text (above 18pt) WCAG AAA ✓ Pass

Any Text WCAG AAA ✓ Pass

If you want to check with other color combinations, try the [Color Contrast Checker](#).

Decimal 14786494 Background



This preview shows how black text looks on a background with the Decimal color 14786494.

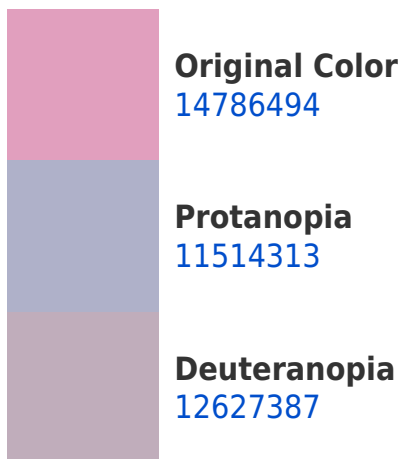



This preview shows how white text looks on a background with the Decimal color 14786494.

Color Blindness Simulation

Color vision deficiency is a very complex topic, and I could not describe the different causes any better than Wikipedia does, so if you want to learn more, you should check out their [article about color blindness](#).

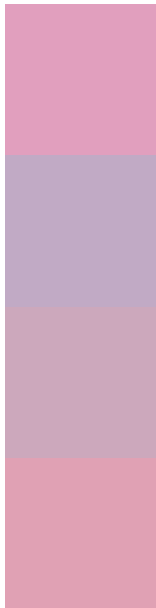
Dichromacy





Tritanopia
14656174

Trichromacy



Original Color
14786494

Protanomaly
12692165

Deuteranomaly
13412540

Tritanomaly
14721460

Monochromacy



Original Color
14786494

Achromatopsia
11974326

Achromatomaly
13020857

CSS Examples

Text

The CSS property to change the color of the text to Decimal 14786494 is called "color". The color property can be set on classes, ids or directly on the HTML element.

This example shows how text in the color #E19FBE looks like.

```
.text, #text, p{  
    color:#E19FBE  
}
```

If you want to add a text shadow in that color use the text-shadow property, you can generate a text shadow directly with our [CSS Text Shadow Generator](#).

Here you see how black text with a 4 pixel #E19FBE colored shadow looks like.

```
.shadow{ text-shadow: 4px 4px 2px #E19FBE
}
```

Border

The CSS property to change the border of an element to Decimal 14786494 is called "border". The border property can be set on classes, ids or directly on the HTML element.

This example shows the color as border, it can be applied via the CSS property "border" or "border-color".

```
.border, #border, table{ border:4px solid
#E19FBE }
```

If only the border color should be changed use the property `border-color`.

```
.border{ border-color:#E19FBE }
```

If you want to add a box shadow in that color use:

Here you see how a box with a 4 pixel #E19FBE colored shadow looks like.

```
.boxshadow{ -moz-box-shadow:4px 4px 4px  
4px #E19FBE; -webkit-box-shadow:4px 4px  
4px 4px #E19FBE; box-shadow:4px 4px 4px  
4px #E19FBE }
```

Background

The CSS property to change the background color of an element to Decimal 14786494 is called "background". The background property can be set on classes, ids or directly on the HTML element.

```
.background, #background, body{  
background:#E19FBE }
```

If only the background color should be changed can be used:

```
.background{ background-color:#E19FBE }
```

This example shows the color as background, it is applied via the CSS property "background".

To optimize and compress your CSS code, you can use our [online CSS compressor and optimizer](#) based on csstidy. If you want to create a linear or radial gradient as background or border, check our [CSS Gradient Generator](#).

Hey! You found this booklet interesting? Support Converting Colors with the new Membership Option!

The pro membership hides all ads, plus gives you double the colors in the color bucket, and more awesome pro features!

[Learn more, Memberships starting at \\$2.50/m!](#)

**Follow me
on Twitter!**

@ConvertingColor