

Converting Colors

Decimal(14787757)

Have a look what the booklet for
Decimal(14787757) contains.

Decimal(14787757)	3
<i>Conversions</i>	4
<i>Details</i>	6
<i>Harmonies</i>	11
<i>Previews</i>	23
<i>Color Blindness Simulation</i>	26
<i>CSS Examples</i>	29

Color

Decimal(14787757)

Conversions

Conversions Part 1

Format	Color
Hex	E1A4AD
RGB	225, 164, 173
RGB Percent	88%, 64%, 68%
CMY	0.1176, 0.3569, 0.3216
CMYK	0.00, 0.27, 0.23, 0.12
HSL	351°, 50%, 76%
HSV	351°, 27%, 88%
XYZ	51.8696, 45.5756, 45.5983
YIQ	183.2650, 33.4670, 15.7310

Conversions

Conversions Part 2

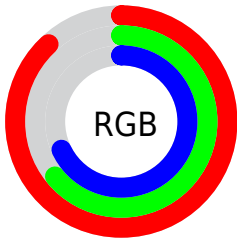
Format	Color
R _Y B	225, 164, 173
Decimal	14787757
CIE Lab	73.27, 23.82, 4.28
CIE LCh	73, 24.197, 10.188
Yxy	45.5756, 0.3626, 0.3186
Android (android.graphics.Color)	4292977837 (0xFFE1A4AD)
YUV	183.2650, -5.0606, 36.6016
Hunter-Lab	67.5097, 19.0046, 7.2103

Details

The Decimal color **14787757** is a light color, and the websafe version is hex **CC9999**. A complement of this color would be **10805720**, and the grayscale version is **12040119**.

A 20% lighter version of the original color is **16767972**, and **11104377** is the 20% darker color. If you saturate the color by 10%, you get **14782106**, and if you desaturate by 10%, it is **14793664**.

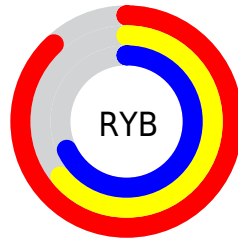
Distribution



Red (88%)

Green (64%)

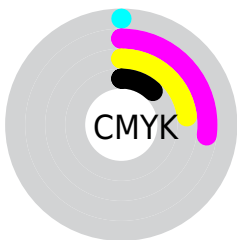
Blue (68%)



Red (88%)

Yellow (64%)

Blue (68%)

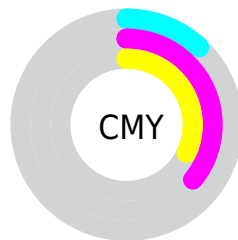


Cyan (0%)

Magenta (27%)

Yellow (23%)

Black (12%)



Cyan (12%)

Magenta (36%)

Yellow (32%)

Brightness & Saturation Gradients

These gradients show how the Decimal color 14787757 changes by changing the brightness by 10 percent. The first figure shows a shift by +10% for each color and the second figure -10%.

Similar to the brightness gradients but the following saturation gradients show a change of the Decimal color 14787757 by changing the saturation by 10% instead.

 14787757

 14787757

16777215

 12880274

 16767972

 11104377


 16775423

 9262944

 7552840

 5842994

 4198941

 2818051

 0

 14787757

 14787757

 14782106

 14793664

 14776199

 14799315

 14770547

 14805223

 14764640

 14810874

 14758989

 14811135

 14753082

 14747431

 14745633

Harmonies

Analogous

The Analogous color harmony consists of three colors that are next to each other on the color wheel.



14132931



14787757



14657432

Triad

The Triadic color harmony groups three colors that are evenly spaced from another and form a triangle on the color wheel.



14787757



10795922



8895197

Complementary

The Complementary color scheme is a pair of colors which are on the opposite of each other on the color wheel.



14787757



10805720

Split Complementary

Split-complementary colors differ from the complementary color scheme. The scheme consists of three colors, the original color and two neighbors of the complement color.



7782352



14787757



9158564

Square

The Square scheme is like the rectangle color scheme, but the four colors are evenly spaced on the color wheel.



14787757



12432776



7979451



10793951

Rectangle

The Rectangle color scheme consists of four colors that form a rectangle on the color wheel.



14787757



14134158



7979451



8371418

Sweetspot

The Sweet Spot groups the original color and five complimentary colors.



14787757



16772078



14197985



8418165



0



8421504

Same Dimension

The Same Dimension uses a secret algorithm to generate beautiful new colors.



14787757



16755639



14793124



7365991



11534362



3145735

Inverse Universe

The Inverse Universe completely reimagines the original color for something new.



14787757



16755639



10800353



7365991



11534362



3145735

Previews

White Background



This preview shows how the Decimal color 14787757 looks on a white background.

Color Contrast Check

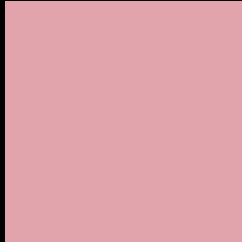
Large Text (above 18pt) WCAG AA × Fail

Any Text WCAG AA × Fail

Large Text (above 18pt) WCAG AAA × Fail

Any Text WCAG AAA × Fail

Black Background



This preview shows how the Decimal color 14787757 looks on a black background.

Color Contrast Check

Large Text (above 18pt) WCAG AA ✓ Pass

Any Text WCAG AA ✓ Pass

Large Text (above 18pt) WCAG AAA ✓ Pass

Any Text WCAG AAA ✓ Pass

If you want to check with other color combinations, try the [Color Contrast Checker](#).

Decimal 14787757 Background



This preview shows how black text looks on a background with the Decimal color 14787757.



This preview shows how white text looks on a background with the Decimal color 14787757.

Color Blindness Simulation

Color vision deficiency is a very complex topic, and I could not describe the different causes any better than Wikipedia does, so if you want to learn more, you should check out their [article about color blindness](#).

Dichromacy



Original Color
14787757

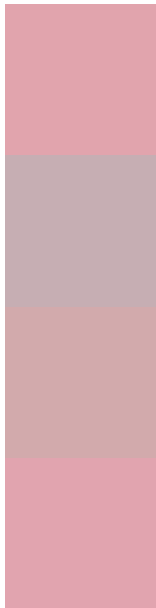
Protanopia
12039094

Deuteranopia
13217451



Tritanopia
14787760

Trichromacy



Original Color
14787757

Protanomaly
13020851

Deuteranomaly
13806252

Tritanomaly
14787759

Monochromacy



Original Color
14787757

Achromatopsia
12040119

Achromatomaly
13021363

CSS Examples

Text

The CSS property to change the color of the text to Decimal 14787757 is called "color". The color property can be set on classes, ids or directly on the HTML element.

This example shows how text in the color #E1A4AD looks like.

```
.text, #text, p{  
    color:#E1A4AD  
}
```

If you want to add a text shadow in that color use the text-shadow property, you can generate a text shadow directly with our [CSS Text Shadow Generator](#).

Here you see how black text with a 4 pixel #E1A4AD colored shadow looks like.

```
.shadow{ text-shadow: 4px 4px 2px #E1A4AD
}
```

Border

The CSS property to change the border of an element to Decimal 14787757 is called "border". The border property can be set on classes, ids or directly on the HTML element.

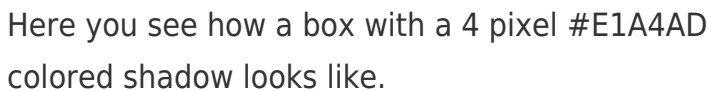
This example shows the color as border, it can be applied via the CSS property "border" or "border-color".

```
.border, #border, table{ border:4px solid
#E1A4AD }
```

If only the border color should be changed use the property `border-color`.

```
.border{ border-color:#E1A4AD }
```

If you want to add a box shadow in that color use:



Here you see how a box with a 4 pixel #E1A4AD colored shadow looks like.

```
.boxshadow{ -moz-box-shadow:4px 4px 4px  
4px #E1A4AD; -webkit-box-shadow:4px 4px  
4px 4px #E1A4AD; box-shadow:4px 4px 4px  
4px #E1A4AD }
```

Background

The CSS property to change the background color of an element to Decimal 14787757 is called "background". The background property can be set on classes, ids or directly on the HTML element.

```
.background, #background, body{  
background:#E1A4AD }
```

If only the background color should be changed can be used:

```
.background{ background-color:#E1A4AD }
```

This example shows the color as background, it is applied via the CSS property "background".

To optimize and compress your CSS code, you can use our [online CSS compressor and optimizer](#) based on csstidy. If you want to create a linear or radial gradient as background or border, check our [CSS Gradient Generator](#).

Hey! You found this booklet interesting? Support Converting Colors with the new Membership Option!

The pro membership hides all ads, plus gives you double the colors in the color bucket, and more awesome pro features!

[Learn more, Memberships starting at \\$2.50/m!](#)

**Follow me
on Twitter!**

@ConvertingColor