

Converting Colors

Decimal(14791065)

Have a look what the booklet for
Decimal(14791065) contains.

Decimal(14791065)	3
<i>Conversions</i>	4
<i>Details</i>	6
<i>Harmonies</i>	11
<i>Previews</i>	23
<i>Color Blindness Simulation</i>	26
<i>CSS Examples</i>	29

Color

Decimal(14791065)

Conversions

Conversions Part 1

Format	Color
Hex	E1B199
RGB	225, 177, 153
RGB Percent	88%, 69%, 60%
CMY	0.1176, 0.3059, 0.4000
CMYK	0.00, 0.21, 0.32, 0.12
HSL	20°, 55%, 74%
HSV	20°, 32%, 88%
XYZ	52.5232, 49.7517, 36.9718
YIQ	188.6160, 36.3120, 2.7120

Conversions

Conversions Part 2

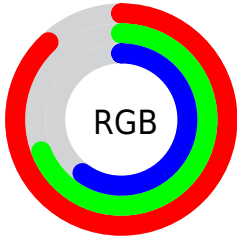
Format	Color
R_{YB}	225, 189, 153
Decimal	14791065
CIE Lab	75.92, 14.11, 18.95
CIE LCh	76, 23.626, 53.318
Yxy	49.7517, 0.3772, 0.3573
Android (android.graphics.Color)	4292981145 (0xFFE1B199)
YUV	188.6160, -17.5587, 31.9088
Hunter-Lab	70.5349, 9.4825, 18.2968

Details

The Decimal color **14791065** is a light color, and the websafe version is hex **CC9999**. A complement of this color would be **10078689**, and the grayscale version is **12434877**.

A 20% lighter version of the original color is **16771535**, and **11041894** is the 20% darker color. If you saturate the color by 10%, you get **14787203**, and if you desaturate by 10%, it is **14794928**.

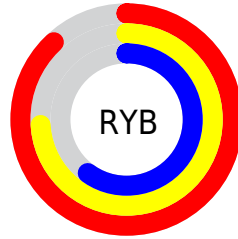
Distribution



Red (88%)

Green (69%)

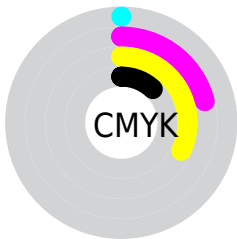
Blue (60%)



Red (88%)

Yellow (74%)

Blue (60%)

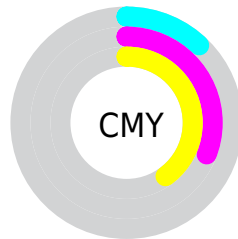


Cyan (0%)

Magenta (21%)

Yellow (32%)

Black (12%)



Cyan (12%)

Magenta (31%)

Yellow (40%)

Brightness & Saturation Gradients

These gradients show how the Decimal color 14791065 changes by changing the brightness by 10 percent. The first figure shows a shift by +10% for each color and the second figure -10%.

Similar to the brightness gradients but the following saturation gradients show a change of the Decimal color 14791065 by changing the saturation by 10% instead.

 14787203

 14794928

 14783340

 14798790

 14779478

 14802652

 14775615

 14806515

 14771753

 14810367

 14767890

 14811135

 14764800

Harmonies

Analogous

The Analogous color harmony consists of three colors that are next to each other on the color wheel.



15248555



14791065



13678736

Triad

The Triadic color harmony groups three colors that are evenly spaced from another and form a triangle on the color wheel.



14791065



9095093



12105699

Complementary

The Complementary color scheme is a pair of colors which are on the opposite of each other on the color wheel.



14791065



10078689

Split Complementary

Split-complementary colors differ from the complementary color scheme. The scheme consists of three colors, the original color and two neighbors of the complement color.



10207206



14791065



8308684

Square

The Square scheme is like the rectangle color scheme, but the four colors are evenly spaced on the color wheel.



14791065



10536097



8701149



13873365

Rectangle

The Rectangle color scheme consists of four colors that form a rectangle on the color wheel.



14791065



12762513



8701149



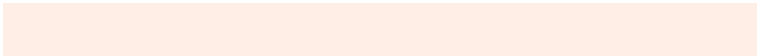
11516645

Sweetspot

The Sweet Spot groups the original color and five complimentary colors.



14791065



16772838



14784969



8418672



0



8421504

Same Dimension

The Same Dimension uses a secret algorithm to generate beautiful new colors.



14791065



16760478



14800281



7367013



11549440



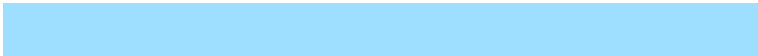
3149824

Inverse Universe

The Inverse Universe completely reimagines the original color for something new.



10078689



10412031



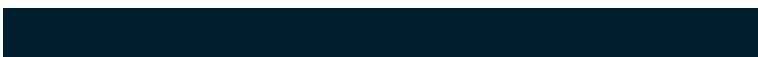
10069473



6646896



30128



8240

Previews

White Background



This preview shows how the Decimal color 14791065 looks on a white background.

Color Contrast Check

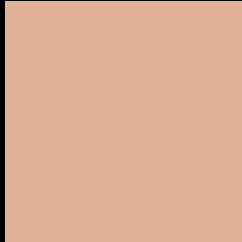
Large Text (above 18pt) WCAG AA × Fail

Any Text WCAG AA × Fail

Large Text (above 18pt) WCAG AAA × Fail

Any Text WCAG AAA × Fail

Black Background



This preview shows how the Decimal color 14791065 looks on a black background.

Color Contrast Check

Large Text (above 18pt) WCAG AA ✓ Pass

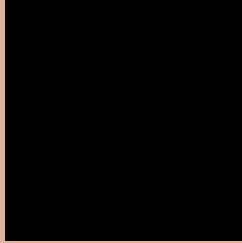
Any Text WCAG AA ✓ Pass

Large Text (above 18pt) WCAG AAA ✓ Pass

Any Text WCAG AAA ✓ Pass

If you want to check with other color combinations, try the [Color Contrast Checker](#).

Decimal 14791065 Background



This preview shows how black text looks on a background with the Decimal color 14791065.



This preview shows how white text looks on a background with the Decimal color 14791065.

Color Blindness Simulation

Color vision deficiency is a very complex topic, and I could not describe the different causes any better than Wikipedia does, so if you want to learn more, you should check out their [article about color blindness](#).

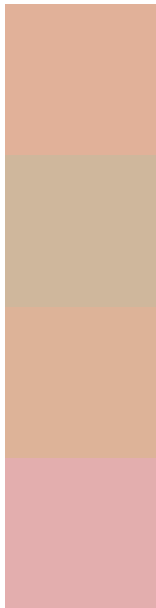
Dichromacy





Tritanopia
14986426

Trichromacy



Original Color
14791065

Protanomaly
13612956

Deuteranomaly
14529432

Tritanomaly
14921390

Monochromacy



Original Color
14791065

Achromatopsia
12434877

Achromatomaly
13285808

CSS Examples

Text

The CSS property to change the color of the text to Decimal 14791065 is called "color". The color property can be set on classes, ids or directly on the HTML element.

This example shows how text in the color #E1B199 looks like.

```
.text, #text, p{  
    color:#E1B199  
}
```

If you want to add a text shadow in that color use the text-shadow property, you can generate a text shadow directly with our [CSS Text Shadow Generator](#).

Here you see how black text with a 4 pixel #E1B199 colored shadow looks like.

```
.shadow{ text-shadow: 4px 4px 2px #E1B199
}
```

Border

The CSS property to change the border of an element to Decimal 14791065 is called "border". The border property can be set on classes, ids or directly on the HTML element.

This example shows the color as border, it can be applied via the CSS property "border" or "border-color".

```
.border, #border, table{ border:4px solid
#E1B199 }
```

If only the border color should be changed use the property `border-color`.

```
.border{ border-color:#E1B199 }
```

If you want to add a box shadow in that color use:

Here you see how a box with a 4 pixel #E1B199 colored shadow looks like.

```
.boxshadow{ -moz-box-shadow:4px 4px 4px  
4px #E1B199; -webkit-box-shadow:4px 4px  
4px 4px #E1B199; box-shadow:4px 4px 4px  
4px #E1B199 }
```

Background

The CSS property to change the background color of an element to Decimal 14791065 is called "background". The background property can be set on classes, ids or directly on the HTML element.

```
.background, #background, body{  
background:#E1B199 }
```

If only the background color should be changed can be used:

```
.background{ background-color:#E1B199 }
```

This example shows the color as background, it is applied via the CSS property "background".

To optimize and compress your CSS code, you can use our [online CSS compressor and optimizer](#) based on csstidy. If you want to create a linear or radial gradient as background or border, check our [CSS Gradient Generator](#).

Hey! You found this booklet interesting? Support Converting Colors with the new Membership Option!

The pro membership hides all ads, plus gives you double the colors in the color bucket, and more awesome pro features!

[Learn more, Memberships starting at \\$2.50/m!](#)

**Follow me
on Twitter!**

@ConvertingColor