

Converting Colors

Decimal(14792337)

Have a look what the booklet for
Decimal(14792337) contains.

Decimal(14792337)	3
<i>Conversions</i>	4
<i>Details</i>	6
<i>Harmonies</i>	11
<i>Previews</i>	23
<i>Color Blindness Simulation</i>	26
<i>CSS Examples</i>	29

Color

Decimal(14792337)

Conversions

Conversions Part 1

Format	Color
Hex	E1B691
RGB	225, 182, 145
RGB Percent	88%, 71%, 57%
CMY	0.1176, 0.2863, 0.4314
CMYK	0.00, 0.19, 0.36, 0.12
HSL	28°, 57%, 73%
HSV	28°, 36%, 88%
XYZ	52.8901, 51.5078, 33.9424
YIQ	190.6390, 37.5050, -2.3910

Conversions

Conversions Part 2

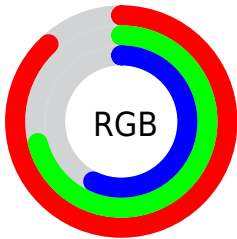
Format	Color
R _Y B	225, 214, 145
Decimal	14792337
CIE Lab	76.99, 10.46, 24.71
CIE LCh	77, 26.833, 67.059
Yxy	51.5078, 0.3823, 0.3723
Android (android.graphics.Color)	4292982417 (0xFFE1B691)
YUV	190.6390, -22.5000, 30.1346
Hunter-Lab	71.7689, 5.9500, 22.1976

Details

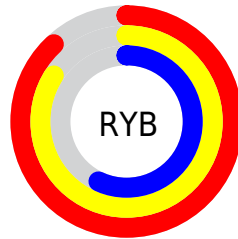
The Decimal color **14792337** is a light color, and the websafe version is hex **FFCC99**. A complement of this color would be **9551073**, and the grayscale version is **12566463**.

A 20% lighter version of the original color is **16772807**, and **11043166** is the 20% darker color. If you saturate the color by 10%, you get **14789243**, and if you desaturate by 10%, it is **14795432**.

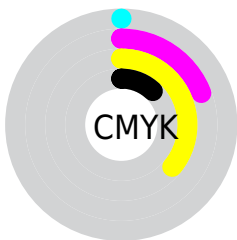
Distribution



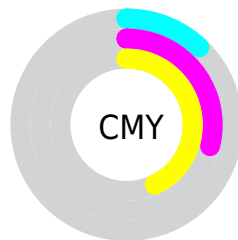
- Red (88%)
- Green (71%)
- Blue (57%)



- Red (88%)
- Yellow (84%)
- Blue (57%)



- Cyan (0%)
- Magenta (19%)
- Yellow (36%)
- Black (12%)



- Cyan (12%)
- Magenta (29%)
- Yellow (43%)

Brightness & Saturation Gradients

These gradients show how the Decimal color 14792337 changes by changing the brightness by 10 percent. The first figure shows a shift by +10% for each color and the second figure -10%.

Similar to the brightness gradients but the following saturation gradients show a change of the Decimal color 14792337 by changing the saturation by 10% instead.

 14792337

 14792337

16777215

 12884855

 16772807

 11043166

 16777187

 9267270

 7491631

 5781786

 4203265

 2559744

 0

 14792337

 14792337

 14789243

 14795432

 14786148

 14798526

 14783054

 14801620

 14779959

 14804715

 14776864

 14807807

 14773514

 14811135

 14772224

Harmonies

Analogous

The Analogous color harmony consists of three colors that are next to each other on the color wheel.



15708065



14792337



13287053

Triad

The Triadic color harmony groups three colors that are evenly spaced from another and form a triangle on the color wheel.



14792337



8178883



13219558

Complementary

The Complementary color scheme is a pair of colors which are on the opposite of each other on the color wheel.



14792337



9551073

Split Complementary

Split-complementary colors differ from the complementary color scheme. The scheme consists of three colors, the original color and two neighbors of the complement color.



11058927



14792337



7785435

Square

The Square scheme is like the rectangle color scheme, but the four colors are evenly spaced on the color wheel.



14792337



9685674



8898283



14921682

Rectangle

The Rectangle color scheme consists of four colors that form a rectangle on the color wheel.



14792337



12108689



8898283



12564970

Sweetspot

The Sweet Spot groups the original color and five complimentary colors.



14792337



16773347



14782909



8419183



0



8421504

Same Dimension

The Same Dimension uses a secret algorithm to generate beautiful new colors.



14792337



16762001



14802321



7367269



11555072



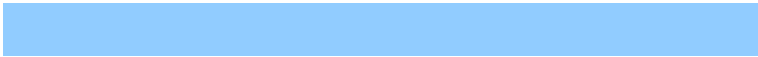
3151360

Inverse Universe

The Inverse Universe completely reimagines the original color for something new.



9551073



9555199



9541089



6646640



24496



6704

Previews

White Background



This preview shows how the Decimal color 14792337 looks on a white background.

Color Contrast Check

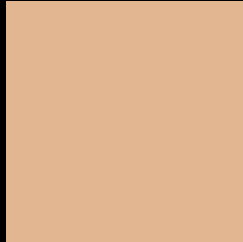
Large Text (above 18pt) WCAG AA × Fail

Any Text WCAG AA × Fail

Large Text (above 18pt) WCAG AAA × Fail

Any Text WCAG AAA × Fail

Black Background



This preview shows how the Decimal color 14792337 looks on a black background.

Color Contrast Check

Large Text (above 18pt) WCAG AA ✓ Pass

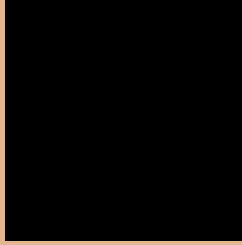
Any Text WCAG AA ✓ Pass

Large Text (above 18pt) WCAG AAA ✓ Pass

Any Text WCAG AAA ✓ Pass

If you want to check with other color combinations, try the [Color Contrast Checker](#).

Decimal 14792337 Background



This preview shows how black text looks on a background with the Decimal color 14792337.




This preview shows how white text looks on a background with the Decimal color 14792337.

Color Blindness Simulation

Color vision deficiency is a very complex topic, and I could not describe the different causes any better than Wikipedia does, so if you want to learn more, you should check out their [article about color blindness](#).

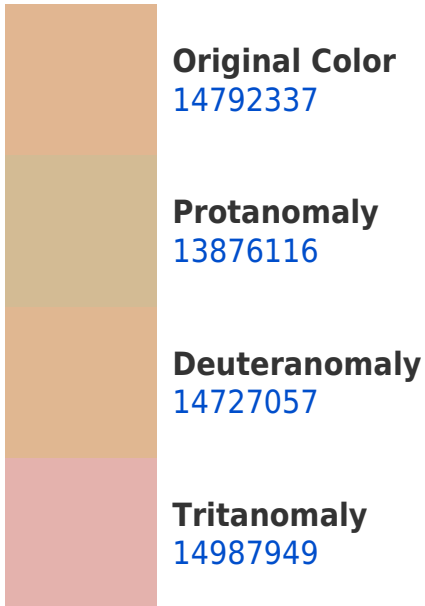
Dichromacy





Tritanopia
15118525

Trichromacy



Monochromacy



CSS Examples

Text

The CSS property to change the color of the text to Decimal 14792337 is called "color". The color property can be set on classes, ids or directly on the HTML element.

This example shows how text in the color #E1B691 looks like.

```
.text, #text, p{  
    color:#E1B691  
}
```

If you want to add a text shadow in that color use the text-shadow property, you can generate a text shadow directly with our [CSS Text Shadow Generator](#).

Here you see how black text with a 4 pixel #E1B691 colored shadow looks like.

```
.shadow{ text-shadow: 4px 4px 2px #E1B691  
}
```

Border

The CSS property to change the border of an element to Decimal 14792337 is called "border". The border property can be set on classes, ids or directly on the HTML element.

This example shows the color as border, it can be applied via the CSS property "border" or "border-color".

```
.border, #border, table{ border:4px solid  
#E1B691 }
```

If only the border color should be changed use the property `border-color`.

```
.border{ border-color:#E1B691 }
```

If you want to add a box shadow in that color use:

Here you see how a box with a 4 pixel #E1B691 colored shadow looks like.

```
.boxshadow{ -moz-box-shadow:4px 4px 4px  
4px #E1B691; -webkit-box-shadow:4px 4px  
4px 4px #E1B691; box-shadow:4px 4px 4px  
4px #E1B691 }
```

Background

The CSS property to change the background color of an element to Decimal 14792337 is called "background". The background property can be set on classes, ids or directly on the HTML element.

```
.background, #background, body{  
background:#E1B691 }
```

If only the background color should be changed can be used:

```
.background{ background-color:#E1B691 }
```

This example shows the color as background, it is applied via the CSS property "background".

To optimize and compress your CSS code, you can use our [online CSS compressor and optimizer](#) based on csstidy. If you want to create a linear or radial gradient as background or border, check our [CSS Gradient Generator](#).

Hey! You found this booklet interesting? Support Converting Colors with the new Membership Option!

The pro membership hides all ads, plus gives you double the colors in the color bucket, and more awesome pro features!

[Learn more, Memberships starting at \\$2.50/m!](#)

**Follow me
on Twitter!**

@ConvertingColor