

Converting Colors

Decimal(14792632)

Have a look what the booklet for
Decimal(14792632) contains.

Decimal(14792632)	3
<i>Conversions</i>	4
<i>Details</i>	6
<i>Harmonies</i>	11
<i>Previews</i>	23
<i>Color Blindness Simulation</i>	26
<i>CSS Examples</i>	29

Color

Decimal(14792632)

Conversions

Conversions Part 1

Format	Color
Hex	E1B7B8
RGB	225, 183, 184
RGB Percent	88%, 72%, 72%
CMY	0.1176, 0.2824, 0.2784
CMYK	0.00, 0.19, 0.18, 0.12
HSL	359°, 41%, 80%
HSV	359°, 19%, 88%
XYZ	56.6366, 53.3352, 52.6571
YIQ	195.6720, 24.7110, 9.2150

Conversions

Conversions Part 2

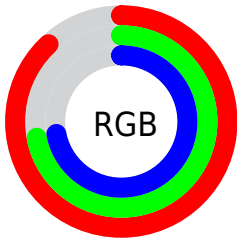
Format	Color
R _Y B	225, 183, 184
Decimal	14792632
CIE Lab	78.07, 15.26, 5.21
CIE LCh	78, 16.128, 18.838
Yxy	53.3352, 0.3483, 0.3280
Android (android.graphics.Color)	4292982712 (0xFFE1B7B8)
YUV	195.6720, -5.7543, 25.7207
Hunter-Lab	73.0310, 10.6251, 8.3722

Details

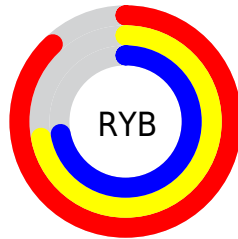
The Decimal color **14792632** is a light color, and the websafe version is hex **FFCCCC**. A complement of this color would be **12050912**, and the grayscale version is **12895428**.

A 20% lighter version of the original color is **16773104**, and **11108995** is the 20% darker color. If you saturate the color by 10%, you get **14786978**, and if you desaturate by 10%, it is **14798542**.

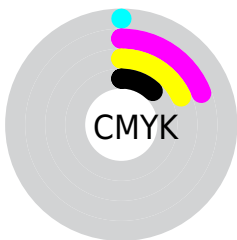
Distribution



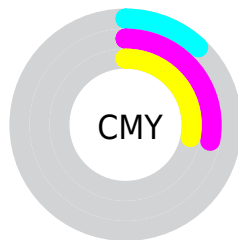
- Red (88%)
- Green (72%)
- Blue (72%)



- Red (88%)
- Yellow (72%)
- Blue (72%)



- Cyan (0%)
- Magenta (19%)
- Yellow (18%)
- Black (12%)



- Cyan (12%)
- Magenta (28%)
- Yellow (28%)

Brightness & Saturation Gradients

These gradients show how the Decimal color 14792632 changes by changing the brightness by 10 percent. The first figure shows a shift by +10% for each color and the second figure -10%.

Similar to the brightness gradients but the following saturation gradients show a change of the Decimal color 14792632 by changing the saturation by 10% instead.


 14792632

 14792632

16777215

 12950685

 16773104

 11108995

 9333098

 7622738

 5978427

 4399909

 2887440

 1114112

 0

 14792632

 14792632

 14786978

 14798542

 14781068

 14804196

 14775414

 14810106

 14769504

 14811135

 14763850

 14757940

 14752286

 14746376

 14745605

Harmonies

Analogous

The Analogous color harmony consists of three colors that are next to each other on the color wheel.



14464967



14792632



14531243

Triad

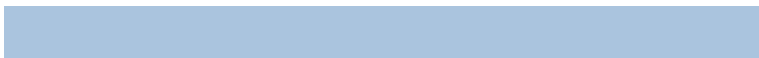
The Triadic color harmony groups three colors that are evenly spaced from another and form a triangle on the color wheel.



14792632



11716525



11191518

Complementary

The Complementary color scheme is a pair of colors which are on the opposite of each other on the color wheel.



14792632



12050912

Split Complementary

Split-complementary colors differ from the complementary color scheme. The scheme consists of three colors, the original color and two neighbors of the complement color.



10340567



14792632



10734011

Square

The Square scheme is like the rectangle color scheme, but the four colors are evenly spaced on the color wheel.



14792632



12829605



10209994



12435421

Rectangle

The Rectangle color scheme consists of four colors that form a rectangle on the color wheel.



14792632



14138534



10209994



10864348

Sweetspot

The Sweet Spot groups the original color and five complimentary colors.



14792632



16773360



14727137



8419191



0



8421504

Same Dimension

The Same Dimension uses a secret algorithm to generate beautiful new colors.



14792632



16762824



14797751



7365989



11534340



3145729

Inverse Universe

The Inverse Universe completely reimagines the original color for something new.



14792632



16762824



12045793



7365989



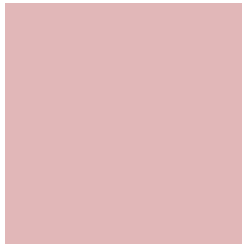
11534340



3145729

Previews

White Background



This preview shows how the Decimal color 14792632 looks on a white background.

Color Contrast Check

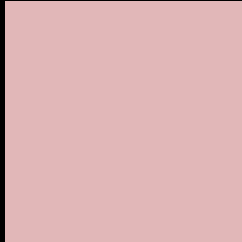
Large Text (above 18pt) WCAG AA × Fail

Any Text WCAG AA × Fail

Large Text (above 18pt) WCAG AAA × Fail

Any Text WCAG AAA × Fail

Black Background



This preview shows how the Decimal color 14792632 looks on a black background.

Color Contrast Check

Large Text (above 18pt) WCAG AA ✓ Pass

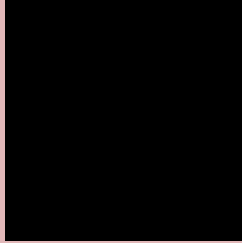
Any Text WCAG AA ✓ Pass

Large Text (above 18pt) WCAG AAA ✓ Pass

Any Text WCAG AAA ✓ Pass

If you want to check with other color combinations, try the [Color Contrast Checker](#).

Decimal 14792632 Background



This preview shows how black text looks on a background with the Decimal color 14792632.




This preview shows how white text looks on a background with the Decimal color 14792632.

Color Blindness Simulation

Color vision deficiency is a very complex topic, and I could not describe the different causes any better than Wikipedia does, so if you want to learn more, you should check out their [article about color blindness](#).

Dichromacy





Tritanopia
14857667

Trichromacy



Original Color
14792632

Protanomaly
13680059

Deuteranomaly
14400183

Tritanomaly
14857919

Monochromacy



Original Color
14792632

Achromatopsia
12895428

Achromatomaly
13615040

CSS Examples

Text

The CSS property to change the color of the text to Decimal 14792632 is called "color". The color property can be set on classes, ids or directly on the HTML element.

This example shows how text in the color #E1B7B8 looks like.

```
.text, #text, p{  
    color:#E1B7B8  
}
```

If you want to add a text shadow in that color use the text-shadow property, you can generate a text shadow directly with our [CSS Text Shadow Generator](#).

Here you see how black text with a 4 pixel #E1B7B8 colored shadow looks like.

```
.shadow{ text-shadow: 4px 4px 2px #E1B7B8
}
```

Border

The CSS property to change the border of an element to Decimal 14792632 is called "border". The border property can be set on classes, ids or directly on the HTML element.

This example shows the color as border, it can be applied via the CSS property "border" or "border-color".

```
.border, #border, table{ border:4px solid
#E1B7B8 }
```

If only the border color should be changed use the property `border-color`.

```
.border{ border-color:#E1B7B8 }
```

If you want to add a box shadow in that color use:

Here you see how a box with a 4 pixel #E1B7B8 colored shadow looks like.

```
.boxshadow{ -moz-box-shadow:4px 4px 4px  
4px #E1B7B8; -webkit-box-shadow:4px 4px  
4px 4px #E1B7B8; box-shadow:4px 4px 4px  
4px #E1B7B8 }
```

Background

The CSS property to change the background color of an element to Decimal 14792632 is called "background". The background property can be set on classes, ids or directly on the HTML element.

```
.background, #background, body{  
background:#E1B7B8 }
```

If only the background color should be changed can be used:

```
.background{ background-color:#E1B7B8 }
```

This example shows the color as background, it is applied via the CSS property "background".

To optimize and compress your CSS code, you can use our [online CSS compressor and optimizer](#) based on csstidy. If you want to create a linear or radial gradient as background or border, check our [CSS Gradient Generator](#).

Hey! You found this booklet interesting? Support Converting Colors with the new Membership Option!

The pro membership hides all ads, plus gives you double the colors in the color bucket, and more awesome pro features!

[Learn more, Memberships starting at \\$2.50/m!](#)

**Follow me
on Twitter!**

@ConvertingColor