

Converting Colors

Decimal(14793126)

Have a look what the booklet for
Decimal(14793126) contains.

Decimal(14793126)	3
<i>Conversions</i>	4
<i>Details</i>	6
<i>Harmonies</i>	11
<i>Previews</i>	23
<i>Color Blindness Simulation</i>	26
<i>CSS Examples</i>	29

Color

Decimal(14793126)

Conversions

Conversions Part 1

Format	Color
Hex	E1B9A6
RGB	225, 185, 166
RGB Percent	88%, 73%, 65%
CMY	0.1176, 0.2745, 0.3490
CMYK	0.00, 0.18, 0.26, 0.12
HSL	19°, 50%, 77%
HSV	19°, 26%, 88%
XYZ	55.2832, 53.4586, 43.4812
YIQ	194.7940, 29.9390, 2.5710

Conversions

Conversions Part 2

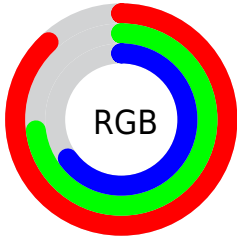
Format	Color
R _Y B	225, 194, 166
Decimal	14793126
CIE Lab	78.15, 11.57, 15.04
CIE LCh	78, 18.976, 52.421
Yxy	53.4586, 0.3632, 0.3512
Android (android.graphics.Color)	4292983206 (0xFFE1B9A6)
YUV	194.7940, -14.1954, 26.4907
Hunter-Lab	73.1154, 7.0135, 15.9215

Details

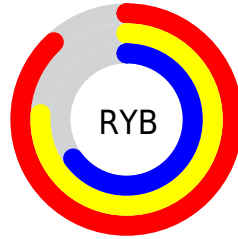
The Decimal color **14793126** is a light color, and the websafe version is hex **FFCCCC**. A complement of this color would be **10931937**, and the grayscale version is **12829635**.

A 20% lighter version of the original color is **16773597**, and **11109490** is the 20% darker color. If you saturate the color by 10%, you get **14789264**, and if you desaturate by 10%, it is **14796989**.

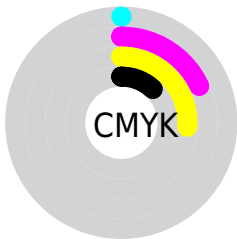
Distribution



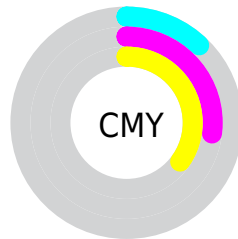
- Red (88%)
- Green (73%)
- Blue (65%)



- Red (88%)
- Yellow (76%)
- Blue (65%)



- Cyan (0%)
- Magenta (18%)
- Yellow (26%)
- Black (12%)



- Cyan (12%)
- Magenta (27%)
- Yellow (35%)

Brightness & Saturation Gradients

These gradients show how the Decimal color 14793126 changes by changing the brightness by 10 percent. The first figure shows a shift by +10% for each color and the second figure -10%.

Similar to the brightness gradients but the following saturation gradients show a change of the Decimal color 14793126 by changing the saturation by 10% instead.

 14793126

 14793126

16777215

 12951180

 16773597

 11109490

 16777210

 9333594

 7623234

 5913388

 4269335

 2822400

 589824

 0

 14793126

 14793126

 14789264

 14796989

 14785145

 14801107

 14781283

 14804970

 14777420

 14808831

 14773558

 14811135

 14769439

 14765577

 14764032

Harmonies

Analogous

The Analogous color harmony consists of three colors that are next to each other on the color wheel.



15119797



14793126



13942687

Triad

The Triadic color harmony groups three colors that are evenly spaced from another and form a triangle on the color wheel.



14793126



10210236



12566242

Complementary

The Complementary color scheme is a pair of colors which are on the opposite of each other on the color wheel.



14793126



10931937

Split Complementary

Split-complementary colors differ from the complementary color scheme. The scheme consists of three colors, the original color and two neighbors of the complement color.



11060452



14793126



9620430

Square

The Square scheme is like the rectangle color scheme, but the four colors are evenly spaced on the color wheel.



14793126



11389355



9947613



13941207

Rectangle

The Rectangle color scheme consists of four colors that form a rectangle on the color wheel.



14793126



13091487



9947613



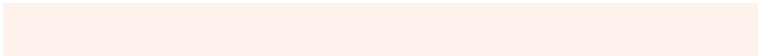
12042467

Sweetspot

The Sweet Spot groups the original color and five complimentary colors.



14793126



16773611



14788302



8419187



0



8421504

Same Dimension

The Same Dimension uses a secret algorithm to generate beautiful new colors.



14793126



16763312



14800550



7367013



11548928



3149824

Inverse Universe

The Inverse Universe completely reimagines the original color for something new.



10931937



11593471



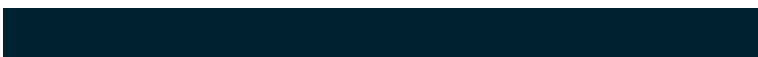
10924513



6647152



30640



8496

Previews

White Background



This preview shows how the Decimal color 14793126 looks on a white background.

Color Contrast Check

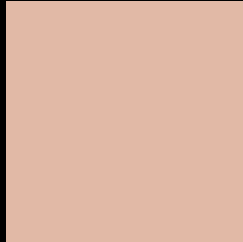
Large Text (above 18pt) WCAG AA × Fail

Any Text WCAG AA × Fail

Large Text (above 18pt) WCAG AAA × Fail

Any Text WCAG AAA × Fail

Black Background



This preview shows how the Decimal color 14793126 looks on a black background.

Color Contrast Check

Large Text (above 18pt) WCAG AA ✓ Pass

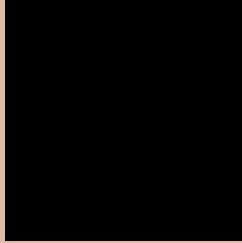
Any Text WCAG AA ✓ Pass

Large Text (above 18pt) WCAG AAA ✓ Pass

Any Text WCAG AAA ✓ Pass

If you want to check with other color combinations, try the [Color Contrast Checker](#).

Decimal 14793126 Background



This preview shows how black text looks on a background with the Decimal color 14793126.



This preview shows how white text looks on a background with the Decimal color 14793126.

Color Blindness Simulation

Color vision deficiency is a very complex topic, and I could not describe the different causes any better than Wikipedia does, so if you want to learn more, you should check out their [article about color blindness](#).

Dichromacy



Original Color
14793126

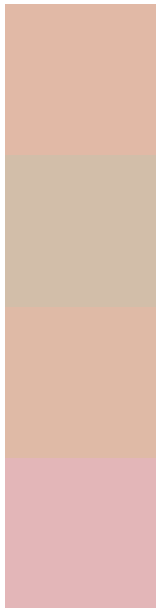
Protanopia
13287850

Deuteranopia
14596774



Tritanopia
14988739

Trichromacy



Original Color
14793126

Protanomaly
13811369

Deuteranomaly
14662310

Tritanomaly
14923448

Monochromacy



Original Color
14793126

Achromatopsia
12829635

Achromatomaly
13549496

CSS Examples

Text

The CSS property to change the color of the text to Decimal 14793126 is called "color". The color property can be set on classes, ids or directly on the HTML element.

This example shows how text in the color #E1B9A6 looks like.

```
.text, #text, p{  
    color:#E1B9A6  
}
```

If you want to add a text shadow in that color use the text-shadow property, you can generate a text shadow directly with our [CSS Text Shadow Generator](#).

Here you see how black text with a 4 pixel #E1B9A6 colored shadow looks like.

```
.shadow{ text-shadow: 4px 4px 2px #E1B9A6
}
```

Border

The CSS property to change the border of an element to Decimal 14793126 is called "border". The border property can be set on classes, ids or directly on the HTML element.

This example shows the color as border, it can be applied via the CSS property "border" or "border-color".

```
.border, #border, table{ border:4px solid
#E1B9A6 }
```

If only the border color should be changed use the property `border-color`.

```
.border{ border-color:#E1B9A6 }
```

If you want to add a box shadow in that color use:

Here you see how a box with a 4 pixel #E1B9A6 colored shadow looks like.

```
.boxshadow{ -moz-box-shadow:4px 4px 4px  
4px #E1B9A6; -webkit-box-shadow:4px 4px  
4px 4px #E1B9A6; box-shadow:4px 4px 4px  
4px #E1B9A6 }
```

Background

The CSS property to change the background color of an element to Decimal 14793126 is called "background". The background property can be set on classes, ids or directly on the HTML element.

```
.background, #background, body{  
background:#E1B9A6 }
```

If only the background color should be changed can be used:

```
.background{ background-color:#E1B9A6 }
```

This example shows the color as background, it is applied via the CSS property "background".

To optimize and compress your CSS code, you can use our [online CSS compressor and optimizer](#) based on csstidy. If you want to create a linear or radial gradient as background or border, check our [CSS Gradient Generator](#).

Hey! You found this booklet interesting? Support Converting Colors with the new Membership Option!

The pro membership hides all ads, plus gives you double the colors in the color bucket, and more awesome pro features!

[Learn more, Memberships starting at \\$2.50/m!](#)

**Follow me
on Twitter!**

@ConvertingColor