

Converting Colors

Decimal(14793376)

Have a look what the booklet for
Decimal(14793376) contains.

Decimal(14793376)	3
<i>Conversions</i>	4
<i>Details</i>	6
<i>Harmonies</i>	11
<i>Previews</i>	23
<i>Color Blindness Simulation</i>	26
<i>CSS Examples</i>	29

Color

Decimal(14793376)

Conversions

Conversions Part 1

Format	Color
Hex	E1BAA0
RGB	225, 186, 160
RGB Percent	88%, 73%, 63%
CMY	0.1176, 0.2706, 0.3725
CMYK	0.00, 0.17, 0.29, 0.12
HSL	24°, 52%, 75%
HSV	24°, 29%, 88%
XYZ	54.9554, 53.6634, 40.7193
YIQ	194.6970, 31.5900, 0.1820

Conversions

Conversions Part 2

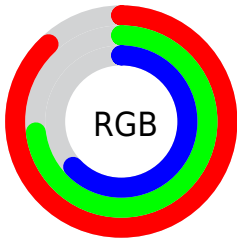
Format	Color
RYB	225, 203, 160
Decimal	14793376
CIELab	78.27, 10.23, 18.43
CIELCh	78, 21.081, 60.973
Yxy	53.6634, 0.3680, 0.3593
Android (android.graphics.Color)	4292983456 (0xFFE1BAA0)
YUV	194.6970, -17.1056, 26.5757
Hunter-Lab	73.2553, 5.7121, 18.3221

Details

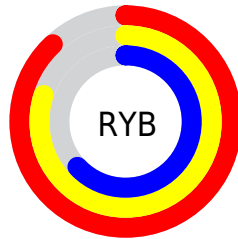
The Decimal color **14793376** is a light color, and the websafe version is hex **FFCC99**. A complement of this color would be **10536929**, and the grayscale version is **12829635**.

A 20% lighter version of the original color is **16773847**, and **11109740** is the 20% darker color. If you saturate the color by 10%, you get **14789770**, and if you desaturate by 10%, it is **14796983**.

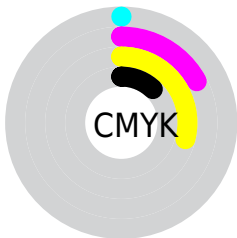
Distribution



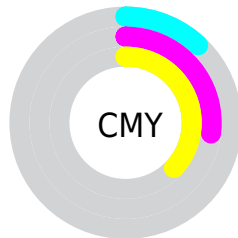
- Red (88%)
- Green (73%)
- Blue (63%)



- Red (88%)
- Yellow (80%)
- Blue (63%)



- Cyan (0%)
- Magenta (17%)
- Yellow (29%)
- Black (12%)



- Cyan (12%)
- Magenta (27%)
- Yellow (37%)

Brightness & Saturation Gradients

These gradients show how the Decimal color 14793376 changes by changing the brightness by 10 percent. The first figure shows a shift by +10% for each color and the second figure -10%.

Similar to the brightness gradients but the following saturation gradients show a change of the Decimal color 14793376 by changing the saturation by 10% instead.

 14793376

 14793376

16777215

 12951430

 16773847

 11109740

 16777203

 9333844

 7557949

 5913639

 4269586

 2757120

 458752

 0

 14793376

 14793376

 14789770

 14796983

 14786419

 14800333

 14783069

 14803939

 14779462

 14807290

 14775856

 14810879

 14772505

 14811135

 14768899

 14768640

Harmonies

Analogous

The Analogous color harmony consists of three colors that are next to each other on the color wheel.



15381934



14793376



13680795

Triad

The Triadic color harmony groups three colors that are evenly spaced from another and form a triangle on the color wheel.



14793376



9686466



13024483

Complementary

The Complementary color scheme is a pair of colors which are on the opposite of each other on the color wheel.



14793376



10536929

Split Complementary

Split-complementary colors differ from the complementary color scheme. The scheme consists of three colors, the original color and two neighbors of the complement color.



11322344



14793376



9227477

Square

The Square scheme is like the rectangle color scheme, but the four colors are evenly spaced on the color wheel.



14793376



10800046



9882083



14464981

Rectangle

The Rectangle color scheme consists of four colors that form a rectangle on the color wheel.



14793376



12764573



9882083



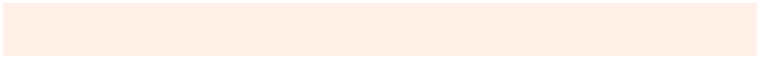
12435430

Sweetspot

The Sweet Spot groups the original color and five complimentary colors.



14793376



16773608



14786759



8419185



0



8421504

Same Dimension

The Same Dimension uses a secret algorithm to generate beautiful new colors.



14793376



16763302



14801312



7367013



11552256



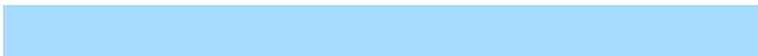
3150592

Inverse Universe

The Inverse Universe completely reimagines the original color for something new.



10536929



10935295



10528737



6646896



27312



7472

Previews

White Background



This preview shows how the Decimal color 14793376 looks on a white background.

Color Contrast Check

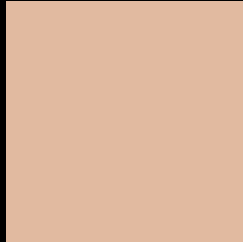
Large Text (above 18pt) WCAG AA × Fail

Any Text WCAG AA × Fail

Large Text (above 18pt) WCAG AAA × Fail

Any Text WCAG AAA × Fail

Black Background



This preview shows how the Decimal color 14793376 looks on a black background.

Color Contrast Check

Large Text (above 18pt) WCAG AA ✓ Pass

Any Text WCAG AA ✓ Pass

Large Text (above 18pt) WCAG AAA ✓ Pass

Any Text WCAG AAA ✓ Pass

If you want to check with other color combinations, try the [Color Contrast Checker](#).

Decimal 14793376 Background



This preview shows how black text looks on a background with the Decimal color 14793376.



This preview shows how white text looks on a background with the Decimal color 14793376.

Color Blindness Simulation

Color vision deficiency is a very complex topic, and I could not describe the different causes any better than Wikipedia does, so if you want to learn more, you should check out their [article about color blindness](#).

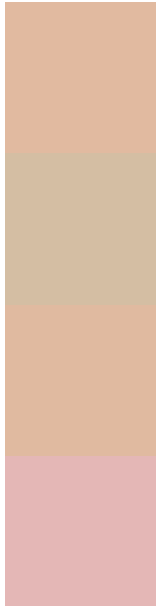
Dichromacy





Tritanopia
15054275

Trichromacy



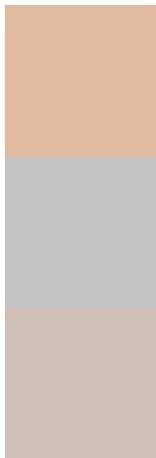
Original Color
14793376

Protanomaly
13942435

Deuteranomaly
14727840

Tritanomaly
14989238

Monochromacy



Original Color
14793376

Achromatopsia
12829635

Achromatomaly
13549750

CSS Examples

Text

The CSS property to change the color of the text to Decimal 14793376 is called "color". The color property can be set on classes, ids or directly on the HTML element.

This example shows how text in the color #E1BAA0 looks like.

```
.text, #text, p{  
    color:#E1BAA0  
}
```

If you want to add a text shadow in that color use the text-shadow property, you can generate a text shadow directly with our [CSS Text Shadow Generator](#).

Here you see how black text with a 4 pixel #E1BAA0 colored shadow looks like.

```
.shadow{ text-shadow: 4px 4px 2px #E1BAA0
}
```

Border

The CSS property to change the border of an element to Decimal 14793376 is called "border". The border property can be set on classes, ids or directly on the HTML element.

This example shows the color as border, it can be applied via the CSS property "border" or "border-color".

```
.border, #border, table{ border:4px solid
#E1BAA0 }
```

If only the border color should be changed use the property `border-color`.

```
.border{ border-color:#E1BAA0 }
```

If you want to add a box shadow in that color use:

Here you see how a box with a 4 pixel #E1BAA0 colored shadow looks like.

```
.boxshadow{ -moz-box-shadow:4px 4px 4px  
4px #E1BAA0; -webkit-box-shadow:4px 4px  
4px 4px #E1BAA0; box-shadow:4px 4px 4px  
4px #E1BAA0 }
```

Background

The CSS property to change the background color of an element to Decimal 14793376 is called "background". The background property can be set on classes, ids or directly on the HTML element.

```
.background, #background, body{  
background:#E1BAA0 }
```

If only the background color should be changed can be used:

```
.background{ background-color:#E1BAA0 }
```

This example shows the color as background, it is applied via the CSS property "background".

To optimize and compress your CSS code, you can use our [online CSS compressor and optimizer](#) based on csstidy. If you want to create a linear or radial gradient as background or border, check our [CSS Gradient Generator](#).

Hey! You found this booklet interesting? Support Converting Colors with the new Membership Option!

The pro membership hides all ads, plus gives you double the colors in the color bucket, and more awesome pro features!

[Learn more, Memberships starting at \\$2.50/m!](#)

**Follow me
on Twitter!**

@ConvertingColor