

Converting Colors

Decimal(14793413)

Have a look what the booklet for
Decimal(14793413) contains.

Decimal(14793413)	3
<i>Conversions</i>	4
<i>Details</i>	6
<i>Harmonies</i>	11
<i>Previews</i>	23
<i>Color Blindness Simulation</i>	26
<i>CSS Examples</i>	29

Color

Decimal(14793413)

Conversions

Conversions Part 1

Format	Color
Hex	E1BAC5
RGB	225, 186, 197
RGB Percent	88%, 73%, 77%
CMY	0.1176, 0.2706, 0.2275
CMYK	0.00, 0.17, 0.12, 0.12
HSL	343°, 39%, 81%
HSV	343°, 17%, 88%
XYZ	58.6883, 55.1566, 60.3764
YIQ	198.9150, 19.7130, 11.6890

Conversions

Conversions Part 2

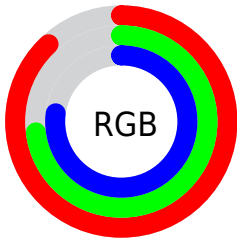
Format	Color
R _Y B	225, 186, 197
Decimal	14793413
CIE Lab	79.13, 15.72, -0.29
CIE LCh	79, 15.723, 358.939
Yxy	55.1566, 0.3369, 0.3166
Android (android.graphics.Color)	4292983493 (0xFFE1BAC5)
YUV	198.9150, -0.9441, 22.8765
Hunter-Lab	74.2675, 11.0877, 3.7869

Details

The Decimal color **14793413** is a light color, and the websafe version is hex **FFCCCC**. A complement of this color would be **12247510**, and the grayscale version is **13092807**.

A 20% lighter version of the original color is **16773886**, and **11109775** is the 20% darker color. If you saturate the color by 10%, you get **14787509**, and if you desaturate by 10%, it is **14799317**.

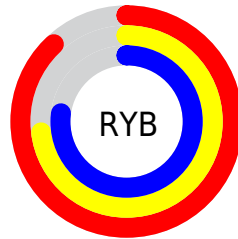
Distribution



Red (88%)

Green (73%)

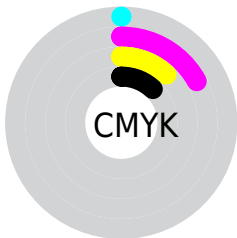
Blue (77%)



Red (88%)

Yellow (73%)

Blue (77%)

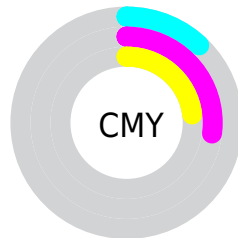


Cyan (0%)

Magenta (17%)

Yellow (12%)

Black (12%)



Cyan (12%)

Magenta (27%)

Yellow (23%)

Brightness & Saturation Gradients

These gradients show how the Decimal color 14793413 changes by changing the brightness by 10 percent. The first figure shows a shift by +10% for each color and the second figure -10%.

Similar to the brightness gradients but the following saturation gradients show a change of the Decimal color 14793413 by changing the saturation by 10% instead.

14793413

14793413

16777215

12951466

16773886

11109775

9399158

7689053

6044742

4466223

2953499

1638401

0

 14793413

 14793413

 14787509

 14799317

 14781861

 14804965

 14775957

 14810869

 14770308

 14811135

 14764404

 14758756

 14752852

 14747204

 14745663

Harmonies

Analogous

The Analogous color harmony consists of three colors that are next to each other on the color wheel.



14138579



14793413



14924726

Triad

The Triadic color harmony groups three colors that are evenly spaced from another and form a triangle on the color wheel.



14793413



12634026



10799836

Complementary

The Complementary color scheme is a pair of colors which are on the opposite of each other on the color wheel.



14793413



12247510

Split Complementary

Split-complementary colors differ from the complementary color scheme. The scheme consists of three colors, the original color and two neighbors of the complement color.



10407122



14793413



11586484

Square

The Square scheme is like the rectangle color scheme, but the four colors are evenly spaced on the color wheel.



14793413



13681575



10735043



11781601

Rectangle

The Rectangle color scheme consists of four colors that form a rectangle on the color wheel.



14793413



14728622



10735043



10603481

Sweetspot

The Sweet Spot groups the original color and five complimentary colors.



14793413



16773878



14072545



8419450



0



8421504

Same Dimension

The Same Dimension uses a secret algorithm to generate beautiful new colors.



14793413



16763353



14795450



7365992



11534386



3145742

Inverse Universe

The Inverse Universe completely reimagines the original color for something new.



14793413



16763353



12245473



7365992



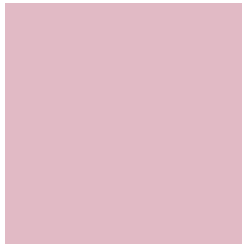
11534386



3145742

Previews

White Background



This preview shows how the Decimal color 14793413 looks on a white background.

Color Contrast Check

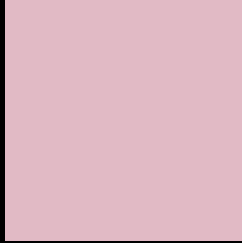
Large Text (above 18pt) WCAG AA × Fail

Any Text WCAG AA × Fail

Large Text (above 18pt) WCAG AAA × Fail

Any Text WCAG AAA × Fail

Black Background



This preview shows how the Decimal color 14793413 looks on a black background.

Color Contrast Check

Large Text (above 18pt) WCAG AA ✓ Pass

Any Text WCAG AA ✓ Pass

Large Text (above 18pt) WCAG AAA ✓ Pass

Any Text WCAG AAA ✓ Pass

If you want to check with other color combinations, try the [Color Contrast Checker](#).

Decimal 14793413 Background



This preview shows how black text looks on a background with the Decimal color 14793413.



This preview shows how white text looks on a background with the Decimal color 14793413.

Color Blindness Simulation

Color vision deficiency is a very complex topic, and I could not describe the different causes any better than Wikipedia does, so if you want to learn more, you should check out their [article about color blindness](#).

Dichromacy



Original Color
14793413

Protanopia
13026250

Deuteranopia
14139076



Tritanopia
14793416

Trichromacy



Original Color
14793413

Protanomaly
13680840

Deuteranomaly
14400964

Tritanomaly
14793415

Monochromacy



Original Color
14793413

Achromatopsia
13092807

Achromatomaly
13681350

CSS Examples

Text

The CSS property to change the color of the text to Decimal 14793413 is called "color". The color property can be set on classes, ids or directly on the HTML element.

This example shows how text in the color #E1BAC5 looks like.

```
.text, #text, p{  
    color:#E1BAC5  
}
```

If you want to add a text shadow in that color use the text-shadow property, you can generate a text shadow directly with our [CSS Text Shadow Generator](#).

Here you see how black text with a 4 pixel #E1BAC5 colored shadow looks like.

```
.shadow{ text-shadow: 4px 4px 2px #E1BAC5
}
```

Border

The CSS property to change the border of an element to Decimal 14793413 is called "border". The border property can be set on classes, ids or directly on the HTML element.

This example shows the color as border, it can be applied via the CSS property "border" or "border-color".

```
.border, #border, table{ border:4px solid
#E1BAC5 }
```

If only the border color should be changed use the property `border-color`.

```
.border{ border-color:#E1BAC5 }
```

If you want to add a box shadow in that color use:

Here you see how a box with a 4 pixel #E1BAC5 colored shadow looks like.

```
.boxshadow{ -moz-box-shadow:4px 4px 4px  
4px #E1BAC5; -webkit-box-shadow:4px 4px  
4px 4px #E1BAC5; box-shadow:4px 4px 4px  
4px #E1BAC5 }
```

Background

The CSS property to change the background color of an element to Decimal 14793413 is called "background". The background property can be set on classes, ids or directly on the HTML element.

```
.background, #background, body{  
background:#E1BAC5 }
```

If only the background color should be changed can be used:

```
.background{ background-color:#E1BAC5 }
```

This example shows the color as background, it is applied via the CSS property "background".

To optimize and compress your CSS code, you can use our [online CSS compressor and optimizer](#) based on csstidy. If you want to create a linear or radial gradient as background or border, check our [CSS Gradient Generator](#).

Hey! You found this booklet interesting? Support Converting Colors with the new Membership Option!

The pro membership hides all ads, plus gives you double the colors in the color bucket, and more awesome pro features!

[Learn more, Memberships starting at \\$2.50/m!](#)

**Follow me
on Twitter!**

@ConvertingColor