

# Converting Colors

Decimal(14794677)

Have a look what the booklet for  
Decimal(14794677) contains.

<b>Decimal(14794677)</b> .....	3
<i><b>Conversions</b></i> .....	4
<i><b>Details</b></i> .....	6
<i><b>Harmonies</b></i> .....	11
<i><b>Previews</b></i> .....	23
<i><b>Color Blindness Simulation</b></i> .....	26
<i><b>CSS Examples</b></i> .....	29

# **Color**

**Decimal(14794677)**

# Conversions

## Conversions Part 1

Format	Color
Hex	E1BFB5
RGB	225, 191, 181
RGB Percent	88%, 75%, 71%
CMY	0.1176, 0.2510, 0.2902
CMYK	0.00, 0.15, 0.20, 0.12
HSL	14°, 42%, 80%
HSV	14°, 20%, 88%
XYZ	58.0226, 56.6054, 51.5839
YIQ	200.0260, 23.4740, 4.0980

# Conversions

## Conversions Part 2

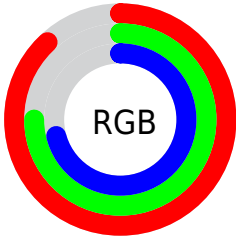
<b>Format</b>	<b>Color</b>
R <sub>Y</sub> B	225, 194, 181
Decimal	14794677
CIE Lab	79.96, 10.55, 9.53
CIE LCh	80, 14.214, 42.107
Yxy	56.6054, 0.3491, 0.3406
Android (android.graphics.Color)	4292984757 (0xFFE1BFB5)
YUV	200.0260, -9.3798, 21.9022
Hunter-Lab	75.2365, 5.9958, 12.0150

# Details

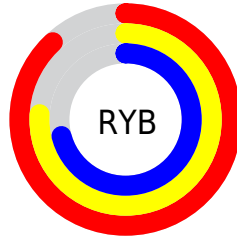
The Decimal color **14794677** is a light color, and the websafe version is hex **FFCCCC**. A complement of this color would be **11917281**, and the grayscale version is **13158600**.

A 20% lighter version of the original color is **16775149**, and **11111040** is the 20% darker color. If you saturate the color by 10%, you get **14790303**, and if you desaturate by 10%, it is **14799052**.

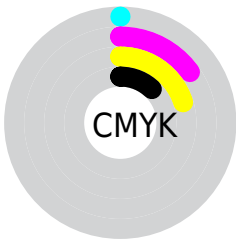
# Distribution



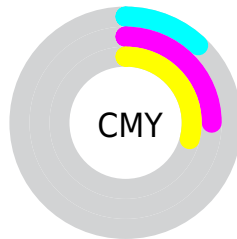
- Red (88%)
- Green (75%)
- Blue (71%)



- Red (88%)
- Yellow (76%)
- Blue (71%)



- Cyan (0%)
- Magenta (15%)
- Yellow (20%)
- Black (12%)



- Cyan (12%)
- Magenta (25%)
- Yellow (29%)

# Brightness & Saturation Gradients

These gradients show how the Decimal color 14794677 changes by changing the brightness by 10 percent. The first figure shows a shift by +10% for each color and the second figure -10%.

Similar to the brightness gradients but the following saturation gradients show a change of the Decimal color 14794677 by changing the saturation by 10% instead.



 14794677

 14794677

16777215

 12952730

 16775149

 11111040

 9334887

 7624783

 5980216

 4401699

 2888973

 1441792

 0

 14794677

 14794677

 14790303

 14799052

 14785672

 14803682

 14781298

 14808057

 14776667

 14811135

 14772293

 14767918

 14763288

 14758913

 14758656

# Harmonies

## Analogous

The Analogous color harmony consists of three colors that are next to each other on the color wheel.



14859713



14794677



14271405

# Triad

The Triadic color harmony groups three colors that are evenly spaced from another and form a triangle on the color wheel.



14794677



11455934



12568288

# Complementary

The Complementary color scheme is a pair of colors which are on the opposite of each other on the color wheel.



14794677



11917281

# Split Complementary

Split-complementary colors differ from the complementary color scheme. The scheme consists of three colors, the original color and two neighbors of the complement color.



11520735



14794677



10931915

# Square

The Square scheme is like the rectangle color scheme, but the four colors are evenly spaced on the color wheel.



14794677



12372914



10931671



13615578

# Rectangle

The Rectangle color scheme consists of four colors that form a rectangle on the color wheel.



14794677



13682348



10931671



12175328

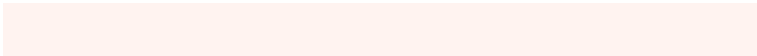


# Sweetspot

The Sweet Spot groups the original color and five complimentary colors.



14794677



16774128



14792151



8419703



0



8421504



# Same Dimension

The Same Dimension uses a secret algorithm to generate beautiful new colors.



14794677



16765636



14800309



7366757



11544576



3148544

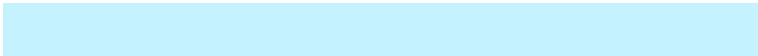


# Inverse Universe

The Inverse Universe completely reimagines the original color for something new.



11917281



12907263



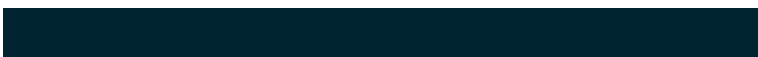
11911649



6647408



34992

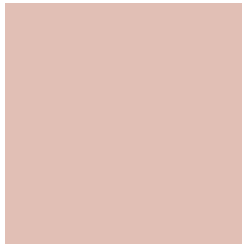


9520



# Previews

## White Background



This preview shows how the Decimal color 14794677 looks on a white background.

## Color Contrast Check

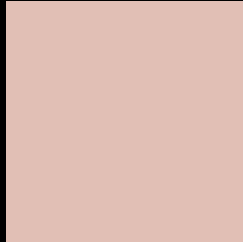
Large Text (above 18pt) WCAG AA × Fail

Any Text WCAG AA × Fail

Large Text (above 18pt) WCAG AAA × Fail

Any Text WCAG AAA × Fail

# Black Background



This preview shows how the Decimal color 14794677 looks on a black background.

## Color Contrast Check

Large Text (above 18pt) WCAG AA ✓ Pass

Any Text WCAG AA ✓ Pass

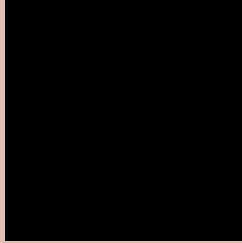
Large Text (above 18pt) WCAG AAA ✓ Pass

Any Text WCAG AAA ✓ Pass

If you want to check with other color combinations, try the [Color Contrast Checker](#).



## Decimal 14794677 Background



This preview shows how black text looks on a background with the Decimal color 14794677.



This preview shows how white text looks on a background with the Decimal color 14794677.

# Color Blindness Simulation

Color vision deficiency is a very complex topic, and I could not describe the different causes any better than Wikipedia does, so if you want to learn more, you should check out their [article about color blindness](#).

## Dichromacy





**Tritanopia**  
14990538

# Trichromacy



**Original Color**

14794677

**Protanomaly**

13943736

**Deuteranomaly**

14729141

**Tritanomaly**

14925250

# Monochromacy



**Original Color**

14794677

**Achromatopsia**

13158600

**Achromatomaly**

13747649

# CSS Examples

## Text

The CSS property to change the color of the text to Decimal 14794677 is called "color". The color property can be set on classes, ids or directly on the HTML element.

This example shows how text in the color #E1BFB5 looks like.

```
.text, #text, p{  
  color:#E1BFB5  
}
```

If you want to add a text shadow in that color use the text-shadow property, you can generate a text shadow directly with our [CSS Text Shadow Generator](#).

Here you see how black text with a 4 pixel #E1BFB5 colored shadow looks like.

```
.shadow{ text-shadow: 4px 4px 2px #E1BFB5
}
```

## Border

The CSS property to change the border of an element to Decimal 14794677 is called "border". The border property can be set on classes, ids or directly on the HTML element.

This example shows the color as border, it can be applied via the CSS property "border" or "border-color".

```
.border, #border, table{ border:4px solid
#E1BFB5 }
```

If only the border color should be changed use the property `border-color`.

```
.border{ border-color:#E1BFB5 }
```

If you want to add a box shadow in that color use:

Here you see how a box with a 4 pixel #E1BFB5 colored shadow looks like.

```
.boxshadow{ -moz-box-shadow:4px 4px 4px  
4px #E1BFB5; -webkit-box-shadow:4px 4px  
4px 4px #E1BFB5; box-shadow:4px 4px 4px  
4px #E1BFB5 }
```

# Background

The CSS property to change the background color of an element to Decimal 14794677 is called "background". The background property can be set on classes, ids or directly on the HTML element.

```
.background, #background, body{  
background:#E1BFB5 }
```

If only the background color should be changed can be used:

```
.background{ background-color:#E1BFB5 }
```

This example shows the color as background, it is applied via the CSS property "background".

To optimize and compress your CSS code, you can use our [online CSS compressor and optimizer](#) based on csstidy. If you want to create a linear or radial gradient as background or border, check our [CSS Gradient Generator](#).



Hey! You found this booklet interesting? Support Converting Colors with the new Membership Option!

The pro membership hides all ads, plus gives you double the colors in the color bucket, and more awesome pro features!

**[Learn more, Memberships starting at \\$2.50/m!](#)**

**Follow me  
on Twitter!**

@ConvertingColor