

Converting Colors

Decimal(14797498)

Have a look what the booklet for
Decimal(14797498) contains.

Decimal(14797498)	3
<i>Conversions</i>	4
<i>Details</i>	6
<i>Harmonies</i>	11
<i>Previews</i>	23
<i>Color Blindness Simulation</i>	26
<i>CSS Examples</i>	29

Color

Decimal(14797498)

Conversions

Conversions Part 1

Format	Color
Hex	E1CABA
RGB	225, 202, 186
RGB Percent	88%, 79%, 73%
CMY	0.1176, 0.2078, 0.2706
CMYK	0.00, 0.10, 0.17, 0.12
HSL	25°, 39%, 81%
HSV	25°, 17%, 88%
XYZ	61.0348, 61.7938, 55.1649
YIQ	207.0530, 18.8440, -0.1000

Conversions

Conversions Part 2

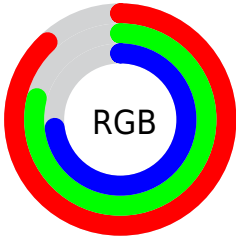
Format	Color
R _Y B	225, 213, 186
Decimal	14797498
CIE Lab	82.80, 5.49, 10.91
CIE LCh	83, 12.215, 63.282
Yxy	61.7938, 0.3429, 0.3472
Android (android.graphics.Color)	4292987578 (0xFFE1CABA)
YUV	207.0530, -10.3791, 15.7395
Hunter-Lab	78.6090, 1.0279, 13.4188

Details

The Decimal color **14797498** is a light color, and the websafe version is hex **CCCCCC**. A complement of this color would be **12243425**, and the grayscale version is **13619151**.

A 20% lighter version of the original color is **16777202**, and **11113605** is the 20% darker color. If you saturate the color by 10%, you get **14794147**, and if you desaturate by 10%, it is **14800849**.

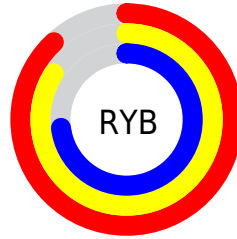
Distribution



Red (88%)

Green (79%)

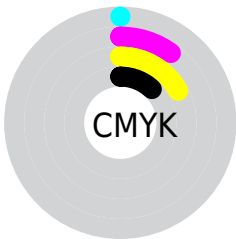
Blue (73%)



Red (88%)

Yellow (84%)

Blue (73%)

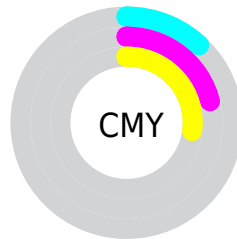


Cyan (0%)

Magenta (10%)

Yellow (17%)

Black (12%)



Cyan (12%)

Magenta (21%)

Yellow (27%)

Brightness & Saturation Gradients

These gradients show how the Decimal color 14797498 changes by changing the brightness by 10 percent. The first figure shows a shift by +10% for each color and the second figure -10%.

Similar to the brightness gradients but the following saturation gradients show a change of the Decimal color 14797498 by changing the saturation by 10% instead.


 14797498

 14797498

16777215

 12955551

 16777202

 11113605

 9402988

 7692627

 6048316

 4469542

 2956818

 1574144

 0

 14797498

 14797498

 14794147

 14800849

 14790541

 14804455

 14787190

 14807806

 14783840

 14811135

 14780489

 14776883

 14773532

 14770182

 14769152

Harmonies

Analogous

The Analogous color harmony consists of three colors that are next to each other on the color wheel.



15189954



14797498



14077623

Triad

The Triadic color harmony groups three colors that are evenly spaced from another and form a triangle on the color wheel.



14797498



11851215



13814753

Complementary

The Complementary color scheme is a pair of colors which are on the opposite of each other on the color wheel.



14797498



12243425

Split Complementary

Split-complementary colors differ from the complementary color scheme. The scheme consists of three colors, the original color and two neighbors of the complement color.



12898277



14797498



11719898

Square

The Square scheme is like the rectangle color scheme, but the four colors are evenly spaced on the color wheel.



14797498



12440771



12112610



14665945

Rectangle

The Rectangle color scheme consists of four colors that form a rectangle on the color wheel.



14797498



13553849



12112610



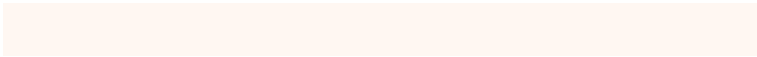
13487331

Sweetspot

The Sweet Spot groups the original color and five complimentary colors.



14797498



16775154



14793425



8420216



0



8421504

Same Dimension

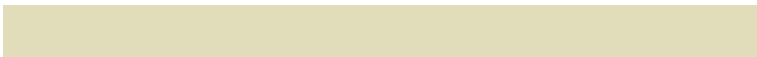
The Same Dimension uses a secret algorithm to generate beautiful new colors.



14797498



16768969



14802362



7367269



11552768



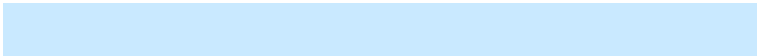
3150848

Inverse Universe

The Inverse Universe completely reimagines the original color for something new.



12243425



13232639



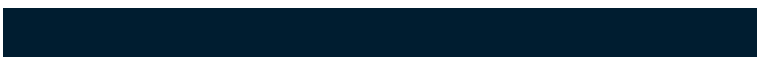
12238561



6646896



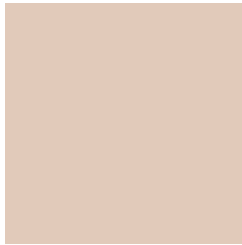
26800



7472

Previews

White Background



This preview shows how the Decimal color 14797498 looks on a white background.

Color Contrast Check

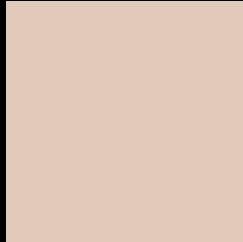
Large Text (above 18pt) WCAG AA × Fail

Any Text WCAG AA × Fail

Large Text (above 18pt) WCAG AAA × Fail

Any Text WCAG AAA × Fail

Black Background



This preview shows how the Decimal color 14797498 looks on a black background.

Color Contrast Check

Large Text (above 18pt) WCAG AA ✓ Pass

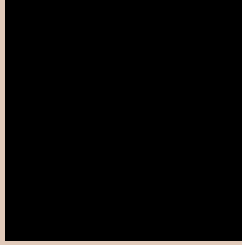
Any Text WCAG AA ✓ Pass

Large Text (above 18pt) WCAG AAA ✓ Pass

Any Text WCAG AAA ✓ Pass

If you want to check with other color combinations, try the [Color Contrast Checker](#).

Decimal 14797498 Background



This preview shows how black text looks on a background with the Decimal color 14797498.



This preview shows how white text looks on a background with the Decimal color 14797498.

Color Blindness Simulation

Color vision deficiency is a very complex topic, and I could not describe the different causes any better than Wikipedia does, so if you want to learn more, you should check out their [article about color blindness](#).

Dichromacy



Original Color
14797498

Protanopia
14077628

Deuteranopia
15321019



Tritanopia
15058645

Trichromacy



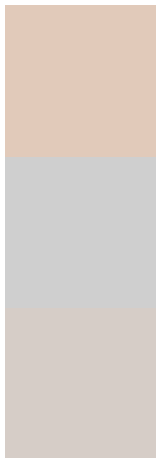
Original Color
14797498

Protanomaly
14339515

Deuteranomaly
15124667

Tritanomaly
14993355

Monochromacy



Original Color
14797498

Achromatopsia
13619151

Achromatomaly
14077383

CSS Examples

Text

The CSS property to change the color of the text to Decimal 14797498 is called "color". The color property can be set on classes, ids or directly on the HTML element.

This example shows how text in the color #E1CABA looks like.

```
.text, #text, p{  
    color:#E1CABA  
}
```

If you want to add a text shadow in that color use the text-shadow property, you can generate a text shadow directly with our [CSS Text Shadow Generator](#).

Here you see how black text with a 4 pixel #E1CABA colored shadow looks like.

```
.shadow{ text-shadow: 4px 4px 2px #E1CABA
}
```

Border

The CSS property to change the border of an element to Decimal 14797498 is called "border". The border property can be set on classes, ids or directly on the HTML element.

This example shows the color as border, it can be applied via the CSS property "border" or "border-color".

```
.border, #border, table{ border:4px solid
#E1CABA }
```

If only the border color should be changed use the property border-color.

```
.border{ border-color:#E1CABA }
```

If you want to add a box shadow in that color use:

Here you see how a box with a 4 pixel #E1CABA colored shadow looks like.

```
.boxshadow{ -moz-box-shadow:4px 4px 4px  
4px #E1CABA; -webkit-box-shadow:4px 4px  
4px 4px #E1CABA; box-shadow:4px 4px 4px  
4px #E1CABA }
```

Background

The CSS property to change the background color of an element to Decimal 14797498 is called "background". The background property can be set on classes, ids or directly on the HTML element.

```
.background, #background, body{  
background:#E1CABA }
```

If only the background color should be changed can be used:

```
.background{ background-color:#E1CABA }
```

This example shows the color as background, it is applied via the CSS property "background".

To optimize and compress your CSS code, you can use our [online CSS compressor and optimizer](#) based on csstidy. If you want to create a linear or radial gradient as background or border, check our [CSS Gradient Generator](#).

Hey! You found this booklet interesting? Support Converting Colors with the new Membership Option!

The pro membership hides all ads, plus gives you double the colors in the color bucket, and more awesome pro features!

[Learn more, Memberships starting at \\$2.50/m!](#)

**Follow me
on Twitter!**

@ConvertingColor