

Converting Colors

Decimal(14798028)

Have a look what the booklet for
Decimal(14798028) contains.

Decimal(14798028)	3
<i>Conversions</i>	4
<i>Details</i>	6
<i>Harmonies</i>	11
<i>Previews</i>	23
<i>Color Blindness Simulation</i>	26
<i>CSS Examples</i>	29

Color

Decimal(14798028)

Conversions

Conversions Part 1

Format	Color
Hex	E1CCCC
RGB	225, 204, 204
RGB Percent	88%, 80%, 80%
CMY	0.1176, 0.2000, 0.2000
CMYK	0.00, 0.09, 0.09, 0.12
HSL	0°, 26%, 84%
HSV	0°, 9%, 88%
XYZ	63.5433, 63.5529, 66.0446
YIQ	210.2790, 12.5160, 4.4520

Conversions

Conversions Part 2

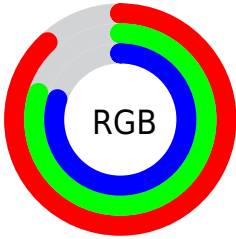
Format	Color
R _Y B	225, 204, 204
Decimal	14798028
CIE Lab	83.73, 7.32, 2.65
CIE LCh	84, 7.785, 19.924
Yxy	63.5529, 0.3290, 0.3290
Android (android.graphics.Color)	4292988108 (0xFFE1CCCC)
YUV	210.2790, -3.0955, 12.9103
Hunter-Lab	79.7201, 2.7686, 6.6849

Details

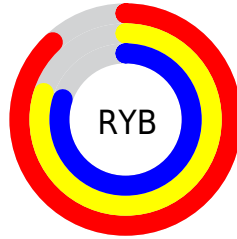
The Decimal color **14798028** is a light color, and the websafe version is hex **CCCCCC**. A complement of this color would be **13427169**, and the grayscale version is **13816530**.

A 20% lighter version of the original color is **16777215**, and **11179670** is the 20% darker color. If you saturate the color by 10%, you get **14792374**, and if you desaturate by 10%, it is **14803939**.

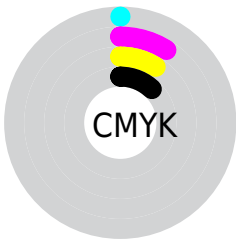
Distribution



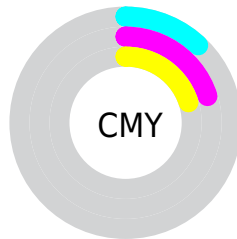
- Red (88%)
- Green (80%)
- Blue (80%)



- Red (88%)
- Yellow (80%)
- Blue (80%)



- Cyan (0%)
- Magenta (9%)
- Yellow (9%)
- Black (12%)



- Cyan (12%)
- Magenta (20%)
- Yellow (20%)

Brightness & Saturation Gradients

These gradients show how the Decimal color 14798028 changes by changing the brightness by 10 percent. The first figure shows a shift by +10% for each color and the second figure -10%.

Similar to the brightness gradients but the following saturation gradients show a change of the Decimal color 14798028 by changing the saturation by 10% instead.

■ 14798028

16777215

■ 14798028

■ 12956081

■ 11179670

■ 9403516

■ 7693155

■ 6114123

■ 4535605

■ 3022624

■ 1771527

■ 0

 14798028

 14798028

 14792374

 14803939

 14786463

 14809593

 14780809

 14811135

 14774898

 14769244

 14763333

 14757679

 14751768

 14746114

Harmonies

Analogous

The Analogous color harmony consists of three colors that are next to each other on the color wheel.



14601427



14798028



14667206

Triad

The Triadic color harmony groups three colors that are evenly spaced from another and form a triangle on the color wheel.



14798028



13227207



13095647

Complementary

The Complementary color scheme is a pair of colors which are on the opposite of each other on the color wheel.



14798028



13427169

Split Complementary

Split-complementary colors differ from the complementary color scheme. The scheme consists of three colors, the original color and two neighbors of the complement color.



12702940



14798028



12768718

Square

The Square scheme is like the rectangle color scheme, but the four colors are evenly spaced on the color wheel.



14798028



13816515



12572117



13619422

Rectangle

The Rectangle color scheme consists of four colors that form a rectangle on the color wheel.



14798028



14471107



12572117



12899294

Sweetspot

The Sweet Spot groups the original color and five complimentary colors.



14798028



16775159



14798049



8419962



0



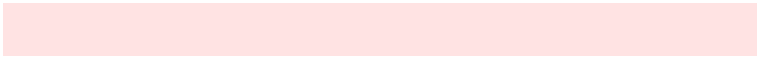
8421504

Same Dimension

The Same Dimension uses a secret algorithm to generate beautiful new colors.



14798028



16770019



14800844



7365989



11534336



3145728

Inverse Universe

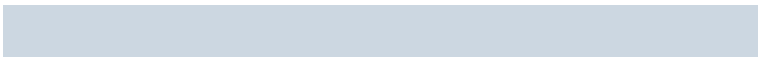
The Inverse Universe completely reimagines the original color for something new.



13427169



14942207



13424609



6647920



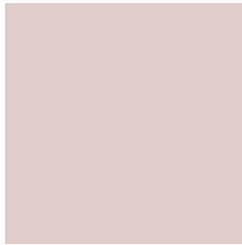
45232



12336

Previews

White Background



This preview shows how the Decimal color 14798028 looks on a white background.

Color Contrast Check

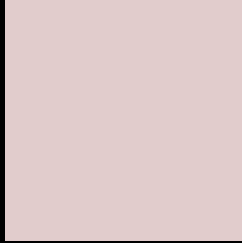
Large Text (above 18pt) WCAG AA × Fail

Any Text WCAG AA × Fail

Large Text (above 18pt) WCAG AAA × Fail

Any Text WCAG AAA × Fail

Black Background



This preview shows how the Decimal color 14798028 looks on a black background.

Color Contrast Check

Large Text (above 18pt) WCAG AA ✓ Pass

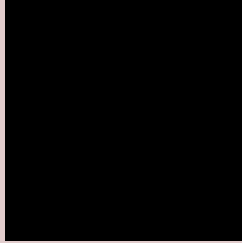
Any Text WCAG AA ✓ Pass

Large Text (above 18pt) WCAG AAA ✓ Pass

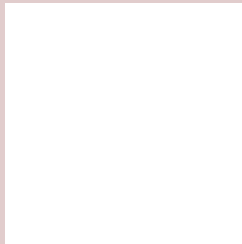
Any Text WCAG AAA ✓ Pass

If you want to check with other color combinations, try the [Color Contrast Checker](#).

Decimal 14798028 Background



This preview shows how black text looks on a background with the Decimal color 14798028.



This preview shows how white text looks on a background with the Decimal color 14798028.

Color Blindness Simulation

Color vision deficiency is a very complex topic, and I could not describe the different causes any better than Wikipedia does, so if you want to learn more, you should check out their [article about color blindness](#).

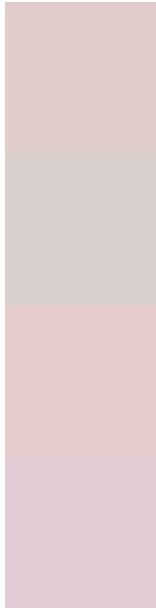
Dichromacy





Tritanopia
14928602

Trichromacy



Original Color
14798028

Protanomaly
14274509

Deuteranomaly
15059916

Tritanomaly
14863317

Monochromacy



Original Color
14798028

Achromatopsia
13816530

Achromatomaly
14143696

CSS Examples

Text

The CSS property to change the color of the text to Decimal 14798028 is called "color". The color property can be set on classes, ids or directly on the HTML element.

This example shows how text in the color #E1CCCC looks like.

```
.text, #text, p{  
  color:#E1CCCC  
}
```

If you want to add a text shadow in that color use the text-shadow property, you can generate a text shadow directly with our [CSS Text Shadow Generator](#).

Here you see how black text with a 4 pixel #E1CCCC colored shadow looks like.

```
.shadow{ text-shadow: 4px 4px 2px #E1CCCC }
}
```

Border

The CSS property to change the border of an element to Decimal 14798028 is called "border". The border property can be set on classes, ids or directly on the HTML element.

This example shows the color as border, it can be applied via the CSS property "border" or "border-color".

```
.border, #border, table{ border:4px solid #E1CCCC }
```

If only the border color should be changed use the property `border-color`.

```
.border{ border-color:#E1CCCC }
```

If you want to add a box shadow in that color use:

Here you see how a box with a 4 pixel #E1CCCC colored shadow looks like.

```
.boxshadow{ -moz-box-shadow:4px 4px 4px  
4px #E1CCCC; -webkit-box-shadow:4px 4px  
4px 4px #E1CCCC; box-shadow:4px 4px 4px  
4px #E1CCCC }
```

Background

The CSS property to change the background color of an element to Decimal 14798028 is called "background". The background property can be set on classes, ids or directly on the HTML element.

```
.background, #background, body{  
background:#E1CCCC }
```

If only the background color should be changed can be used:

```
.background{ background-color:#E1CCCC }
```

This example shows the color as background, it is applied via the CSS property "background".

To optimize and compress your CSS code, you can use our [online CSS compressor and optimizer](#) based on csstidy. If you want to create a linear or radial gradient as background or border, check our [CSS Gradient Generator](#).

Hey! You found this booklet interesting? Support Converting Colors with the new Membership Option!

The pro membership hides all ads, plus gives you double the colors in the color bucket, and more awesome pro features!

[Learn more, Memberships starting at \\$2.50/m!](#)

**Follow me
on Twitter!**

@ConvertingColor